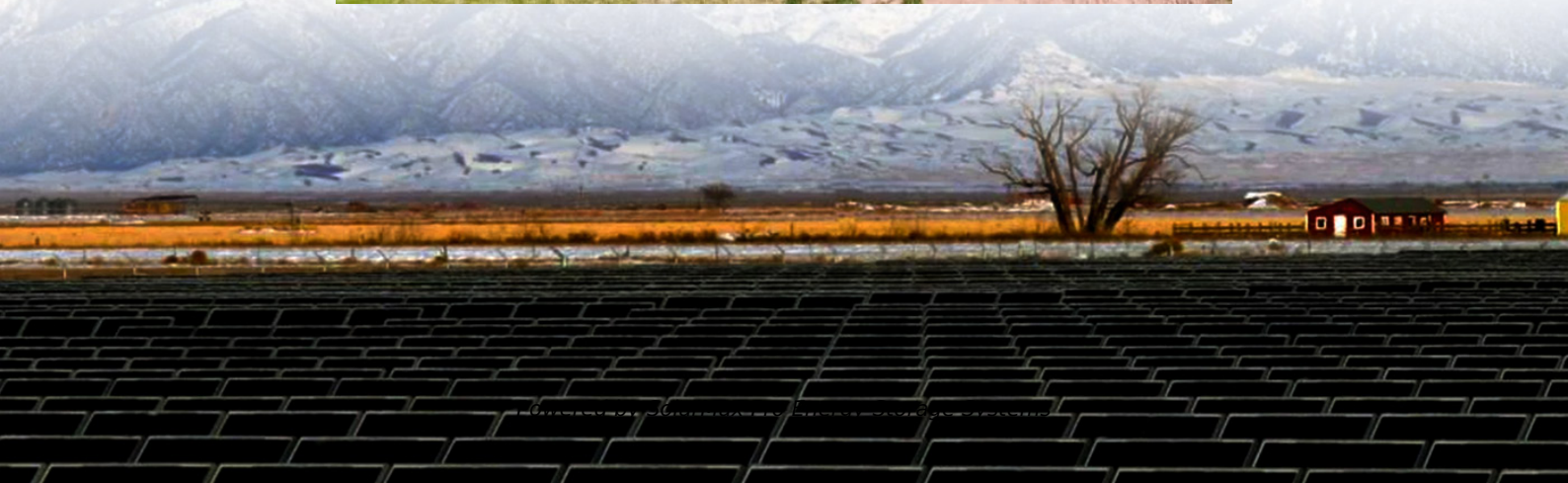




SolarMax Pro Energy Storage Systems

Which communication base station in Serbia has the most wind power





Overview

The first wind farm was opened in 2011 and is located in , ; it has an installed capacity of 600 KW. In 2015, a wind farm near Kula was opened with an installed capacity of 9.9 MW; it was constructed by . La Pikolina (6.6 MW) wind farm near was opened in 2016. Malibunar (8 MW) went online in 2017. Alibunar (42 MW) went online in 2018.



Which communication base station in Serbia has the most wind power

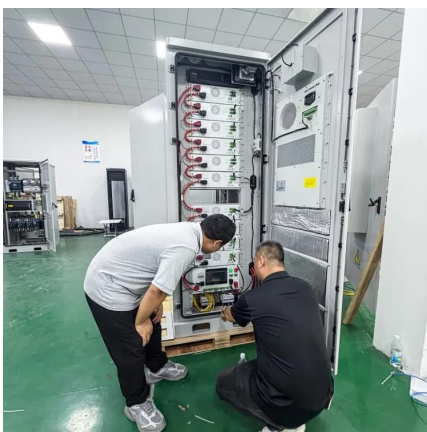
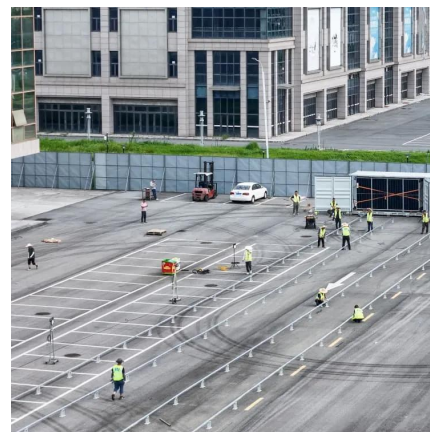


BeoGrid 2025 project to upgrade transmission grid for more ...

The project envisages the construction of infrastructure to facilitate the grid connection of new wind and solar power plants in the south Banat area and the transmission ...

[Map of RES power plant locations in Serbia](#)

The map is interactive and provides basic information (in Serbian) and provides for all locations such as: name, type of power plant, capacity (MW), stage of ...



Wind power in Serbia

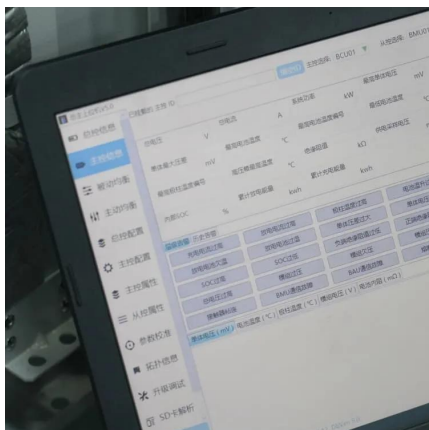
The first wind farm was opened in 2011 and is located in Leskova, Tutin; it has an installed capacity of 600 KW. In 2015, a wind farm near Kula was opened with an installed capacity of 9.9 MW; it was constructed by MK Fintel Wind. La Pikolina (6.6 MW) wind farm near Vr̂ac was opened in 2016. Malibunar (8 MW) went online in 2017. Alibunar (42 MW) went online in 2018.

Using wind and solar energy

(Oliver Duli? and Kjell Morten Johnsen) Telenor has opened its first base station in Serbia which combines solar and wind energy to power the



network, at site Plo?ica in Kovin municipality.



Wind power in Serbia

The first wind farm was opened in 2011 and is located in Leskova, Tutin; it has an installed capacity of 600 KW. [4] In 2015, a wind farm near Kula was opened with an installed capacity ...

List of power stations in Serbia

The total generating capacity is 4,390 MW (excluding Kosovo A and Kosovo B power plants). [1] With the establishment of the UNMIK administration in Kosovo on 1 July 1999, Serbia lost ...



Communications Base :: Power & Revolution General Discussions

I think by launching satellites in space program has the same effect. As i understood it, communication bases could stop incoming nukes. And that was basically the only effect



[Top 13 Largest Wind Farms in the World by Capacity](#)

Wind power has become one of the leading sources of clean energy around the world. Countries are building massive wind farms to reduce ...



Kriva?a, first wind farm in Serbia south of Danube, officially starts

The companies MK Group and Alfi Renewables inaugurated their Kriva?a wind farm in Golubac in eastern Serbia. At 105.6 MW in capacity, it is one of the largest in the ...

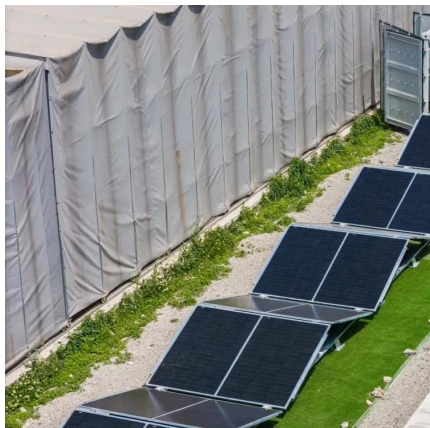
[Map of RES power plant locations in Serbia](#)

The map is interactive and provides basic information (in Serbian) and provides for all locations such as: name, type of power plant, capacity (MW), stage of the connection process, as well ...



Kovacica (Serbia)

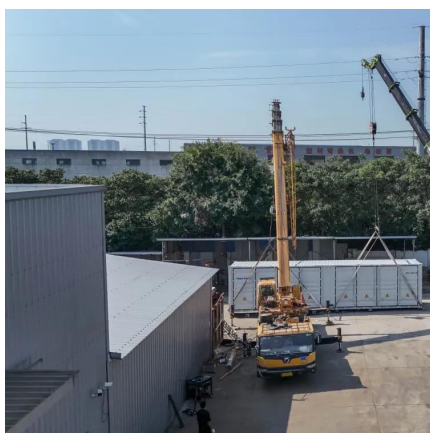
Details City: Kovacica Commissioning: 38 turbines: GE Energy 2.75-120 (power 2 750 kW, diameter 120 m) Hub height: Total nominal power: 104,500 kW Operational Onshore ...



Web-PDF

In a parallel process, communications technology has continued to develop rapidly over the past few years, and Ethernet has become the established standard in the power supply sector.

...



Wind energy in Serbia: 14 wind farms to be opened by 2028

There are also five projects relating to connecting the facilities installed by the transmission system users to the electricity grid, primarily intended to power new mines, the ...

Using wind and solar energy

Telenor has opened its first base station in Serbia which combines solar and wind energy to power the network, at site Plo?ica in Kovin municipality. This is the first in a series of Telenor's ...





BeoGrid 2025 project to upgrade transmission grid for ...

The project envisages the construction of infrastructure to facilitate the grid connection of new wind and solar power plants in the south Banat ...

Wind Power plant Krivaca

The Krivaca wind power plant, being built 100 km south-east of Belgrade on the border with Romania, lays a foundation for the further development of renewable energy in the region.



Wind-Solar Hybrid Power Technology for Communication Base Station

Wind-solar hybrid power system based on the wind energy and solar energy is an ideal and clean solution for the power supply of communication base station, especially for those located at ...

[Emergy Offloads 168MW Serbian Wind Farm](#)

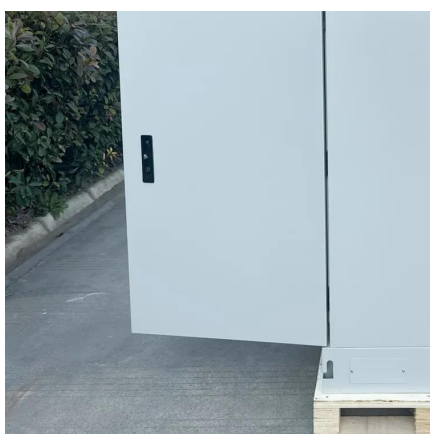
They have secured market premiums through Serbia's renewable energy auctions. Following construction and grid integration, the electricity from these wind farms will be ...



Serbia and energy: a problem without much solutions

Serbia, which has a population of roughly 6.9 million people, gets the majority of its electricity from domestic sources. Around 70% of Serbia's

...



Wind park Kriva?a launches operations

The first wind park in Eastern Serbia has been launched. The Kriva?a Wind Park (103 MW) will annually produce 310 GWh, sufficient to power 75,000 households. For two ...



Kriva?a, first wind farm in Serbia south of Danube, ...

The companies MK Group and Alfi Renewables inaugurated their Kriva?a wind farm in Golubac in eastern Serbia. At 105.6 MW in capacity, it is

...





[\(PDF\) Design of an off-grid hybrid PV/wind power ...](#)

The study [4] has discussed the energy efficiency of telco base stations with renewable sources integration and the possibility of base stations ...



Contact Us

For catalog requests, pricing, or partnerships, please visit:
<https://bringmethehorizon.eu>