



**SolarMax Pro Energy Storage Systems**

# **What types of outdoor power supplies are available in Romania**





## Overview

---

Do I need a power adapter in Romania?

The standard voltage in Romania is 230V, and the frequency is 50Hz. Devices from countries with different voltage standards, like the United States (120V), may require a voltage converter in addition to a plug adapter. Do You Need a Power Adapter in Romania?

Whether you'll need a power adapter depends on the type of plug your devices use.

Which plug type is compatible with a Romanian power outlet?

It's important to note that plug type C, which has two round pins without earth clips, is also compatible with type F outlets. The standard voltage in Romania is 230 volts and the frequency is 50 Hz. This means that most electronic devices designed for use in Europe will be compatible with the power outlets in Romania.

What voltage does Romania use?

Also, the voltage in Romania is the same as in Europe. What Outlet does Romania Use?

Type C plug sockets are used in Europe, Africa and Asia. They have two round pins and no grounding pin. These plugs are typically used with devices that have a voltage of 220-240V. This outlet is rated for 2.5 amps.

What type of plug do I need in Romania?

In North America, the standard plug types are Type A and Type B, with a voltage of 120V. Since Romania uses Type C and F outlets, you'll need a Type A/B to Type C/F adapter. Additionally, as the voltage in North America is different, you may also need a voltage converter for devices that are not dual-voltage.



Do Europeans need a travel adapter in Romania?

Europeans do not need a travel adapter or transformer when traveling to Romania. Most device plugs will work with the outlet types in Romania. Also, the voltage in Romania is the same as in Europe. What Outlet does Romania Use?

Type C plug sockets are used in Europe, Africa and Asia. They have two round pins and no grounding pin.

What is the standard voltage of a power socket in Romania?

All power sockets in Romania provide a standard voltage of 230V with a standard frequency of 50Hz. You can use all your equipment in Romania if the outlet voltage in your own country is between 220V-240V. This is the case in most of Europe, Australia, the United Kingdom and most countries in Africa and Asia.



## What types of outdoor power supplies are available in Romania

---



### [Different Types of Power Supplies . Jameco Electronics](#)

Your Guide to the Different Types of Power Supplies When it comes to powering your devices, you're likely familiar with the different types of power supplies. ...

### Romania electrical outlets & plugs

Romania uses electrical outlets and power plugs of types C & F (see images). If your country uses the same electrical outlets and power plugs, you don't need a travel adapter.



### [Power Plugs and Outlets in Romania: Do I Need a ...](#)

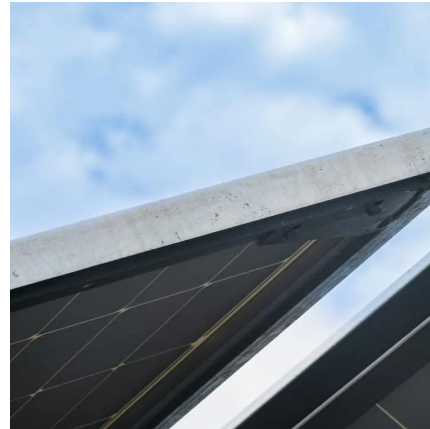
Are you traveling to Romania? Find out what power plugs and outlets are being used in Romania. Also, see if you need a travel adapter.

### Romania Electric Plug Types: Will You Need An Adapter In ...

Since Romania uses Type C and F outlets, you'll need a Type A/B to Type C/F adapter.



Additionally, as the voltage in North America is different, you may also need a voltage ...



## Power Plugs and Outlets in Romania: Do I Need a Travel Adapter?

Are you traveling to Romania? Find out what power plugs and outlets are being used in Romania. Also, see if you need a travel adapter.

## Romania

Typically, type C plug sockets are not allowed to be installed in Romania: these outlets are not earthed and are therefore considered dangerous. Only type F power points are ...



## Romania's Energy Sector Overview

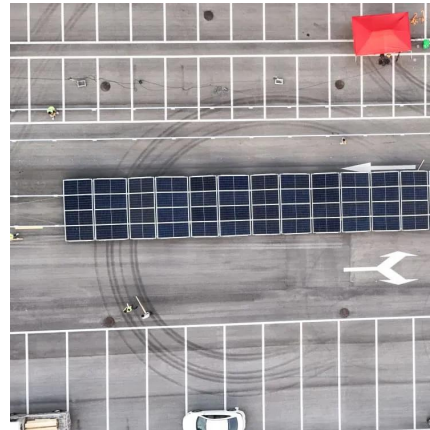
Romania's energy sector is characterized by opportunities in emerging areas such as hydrogen and LNG, alongside ongoing investments in renewable energy and nuclear power. The ...





## Romania Outdoor Power Equipment Market (2025-2031)

Market Forecast By Equipment Type (Lawn Mowers, Saws, Trimmers & Edgers, Blowers, Snow Throwers, Tillers & Cultivators, Others), By Applications (Commercial, Residential/DIY), By ...



## **Sockets in Romania: Adapters required for travelers from USA?**

In Romania, type C and F power outlets are used, while in USA, you use plugs A and B. If you're traveling to Romania, you'll need a power adapter for types C and F, as your ...

## How much electricity can an outdoor power supply store

The capacity of an outdoor power supply to store electricity widely varies based on several factors.  
1. Battery type significantly influences storage capacity, with lithium-ion ...



## **Romania Electric Plug Types: Will You Need An Adapter In Romania?**

Since Romania uses Type C and F outlets, you'll need a Type A/B to Type C/F adapter. Additionally, as the voltage in North America is different, you may also need a voltage ...



### [US to Romania Power Adapter: What Plug Do I Need? \(2025\)](#)

Which power outlets do they use in Romania?  
The power outlets used in Romania are type F and are commonly referred to as "Schuko plugs."  
They are the most common type ...



### **Outdoor Power Panel In Romania**

Looking for a trusted source to buy Outdoor Power Panel In Romania? Brilltech Engineers Pvt. Ltd is the one you can reach. We have a highly experienced team, well-loaded manufacturing ...

### **Romania**

This guide will help you understand the different types of plugs and sockets used in Romania and how they compare to those you use at home, so you can be sure you have the right adapter ...





### [Complete list: Three-phase electric power ...](#)

Although single-phase power is more prevalent today, three-phase is chosen as the power of choice for many different types of applications.

...

## **Where to Buy Outdoor Power Supplies in Romania A Complete ...**

Looking for reliable outdoor power solutions in Romania? Whether you're camping in the Carpathians or preparing for emergencies, this guide covers the best stores, key features to ...



## **Power Supplies**

Power Supply Units There is a suitable power supply/charger unit available for every type of application. Each unit features permanent battery monitoring, voltage stabilisation and current ...

### [Romania Plugs & Sockets: Do I Need a Power Adapter? \[2025\]](#)

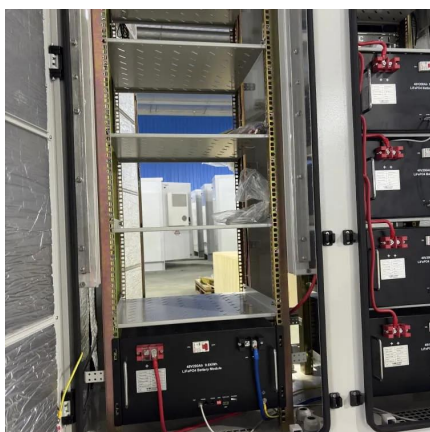
To ensure that your electronic devices are safe and functional while you're in Romania, you need to understand the country's power adapter requirements. This guide will help you choose the ...





### [Plug and outlet type used in Romania](#)

If you're travelling to Romania, you might be wondering if you can use your electrical appliances there. Different countries have different plug outlets, and there are a surprising number of ...



### [Power Supplies Selection Guide: Types, Features, ...](#)

Power supplies are electrical devices that deliver electric power to one or several loads. They generate the output power by converting an input signal into an ...



### **Romania Power Cords, CEE 7/7, Schuko Type F Power Cord Sets, Power**

Type F detachable power cord sets and power supply cords are for use in Romania. View our Romania detachable power cord sets directory with IEC 60320 C-13, C-19, C-7, C-5 or C-15 ...



### [Outdoor Power Supply with Ferrite \(For Original ...](#)

This IP68-rated power supply provides protection from the elements in an outdoor setting. Featuring a 3A potted micro USB (5V) connection, it is perfect for ...



### [Romania Plugs & Sockets: Do I Need a Power ...](#)

To ensure that your electronic devices are safe and functional while you're in Romania, you need to understand the country's power adapter requirements. ...

## Contact Us

---

For catalog requests, pricing, or partnerships, please visit:  
<https://bringmethehorizon.eu>