



SolarMax Pro Energy Storage Systems

What size inverter is suitable for 12V





Overview

What voltage should a 12V inverter run on?

The input voltage of the inverter should match the battery voltage. (For example 12v battery for 12v inverter, 24v battery for 24v inverter and 48v battery for 48v inverter Summary What Will An Inverter Run & For How Long?

.

What size inverter do I Need?

The right size inverter for your specific application depends on how much wattage your devices require. This information is usually printed somewhere on electronic devices, although it may show voltage and amperage ratings instead.

What is a 12 volt inverter?

An inverter is a device that turns the power from a 12 volt DC battery, like the one in your car or truck, into the 120 volt AC power that runs all of the electronics in your house. You can use one of these devices to power all sorts of devices in your car, but it's important to figure out how big of an inverter you need first.

How much battery do I need to run a 3000-watt inverter?

You would need around 24v 150Ah Lithium or 24v 300Ah Lead-acid Battery to run a 3000-watt inverter for 1 hour at its full capacity Here's a battery size chart for any size inverter with 1 hour of load runtime Note! The input voltage of the inverter should match the battery voltage.

How do I choose a battery inverter?

Ensure that the inverter matches your battery's voltage (typically 12V or 24V). Larger appliances or higher power consumption needs may require higher-capacity inverters and battery systems, such as 24V or even 48V setups.



Power Consumption: Low (suitable for small devices like phone chargers and LED lights).

How much power does an inverter need?

The continuous power requirement is actually 2250 but when sizing an inverter, you have to plan for the start up so the inverter can handle it. Third, you need to decide how long you want to run 2250 watts. Let's say you would like to power these items for an eight-hour period.



What size inverter is suitable for 12V



[Determining the Solar and Inverter Size Needed to ...](#)

Why Getting the Right Size Matters for Your Battery Charging Setup Efficiency and Performance Selecting the appropriate Size of your solar ...

[What Size Inverter Do I Need? - MWXNE POWER](#)

The key to choosing a 12V, 24V or 48V inverter is to make a trade-off based on your specific application scenario. Below, I will briefly analyze the ...



[12V Guru - What size inverter do I need?](#)

Your battery (bank) size will also have an impact on the size of the inverter which you can utilise. Refer to the table below for recommended ...

Inverter Size Calculator

The Inverter Size Calculator is a powerful tool to help you select the right inverter based on your specific load requirements, efficiency level, and



safety needs.

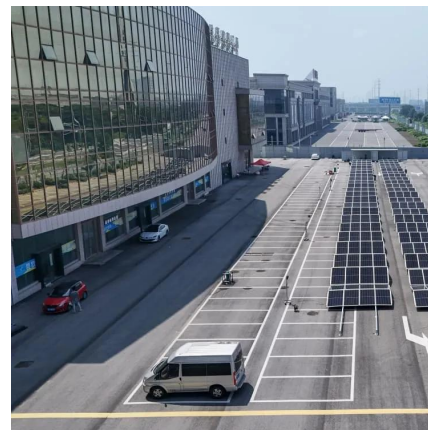


12V Guru - What size inverter do I need?

Your battery (bank) size will also have an impact on the size of the inverter which you can utilise. Refer to the table below for recommended inverter sizes vs battery bank size.

What Size Inverter Do I Need?

Whether you're looking for what size inverter is best for your house or something as simple as an inverter for power your TV, the proper size will be a measurement based on the typical power ...



What Size Inverter Can I Run Off a 200Ah Lithium ...

You can run an inverter rated between 1500W and 2400W off a 200Ah lithium battery depending on voltage and usage. Typically, a 12V ...



[What Size Inverter Do I Need For My Campervan or ...](#)

This guide covers the critical factors in selecting the right size inverter you need, and includes a list of common 240V appliances and the inverter sizes required ...

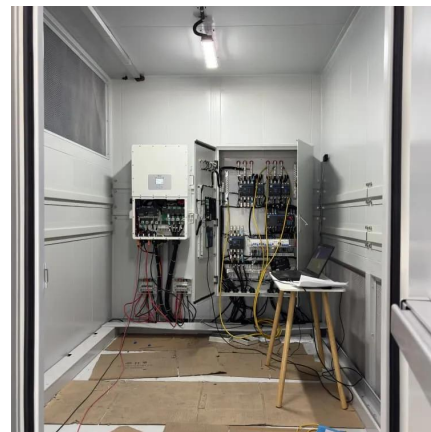


[What is the size of an Inverter 220V TO 12V?](#)

In this blog, I'm gonna break down everything you need to know about the size of a 220V to 12V inverter, including what factors affect it and how to choose the right size for your needs.

[The Only Inverter Size Chart You'll Ever Need](#)

The right size inverter for your specific application depends on how much wattage your devices require. This information is usually printed ...



[What Size Inverter You Need \(Calculations + Battery\)](#)

The size of the inverter required will be determined by the total wattage of the appliances you need to operate and the time they need to run. ...



What Size Solar Water Pump do I Need?

Choose a suitable water pump according to the output voltage and power of the solar power generation system. For example, if a 12V portable solar panel is used, a solar ...



What size inverter do you need for a 100ah battery?

A 12V battery will require a 12V inverter, and a 24V battery will require a 24V inverter. Output Waveform: This will indicate how smooth of an ...

Selecting the Right Inverter for Your Campervan or ...

In campervans and motorhomes, an inverter is essential for converting the 12V DC power from your battery into 240V AC power for running household ...



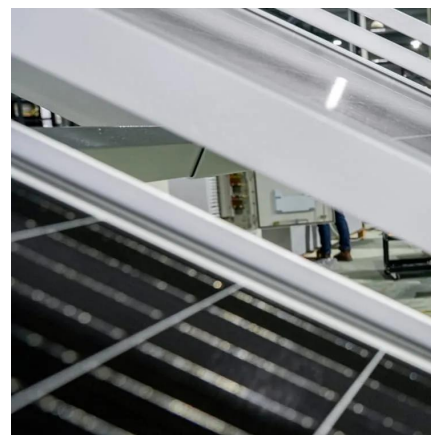


What Size Inverter Do I Need?

Whether you're looking for what size inverter is best for your house or something as simple as an inverter for power your TV, the proper size will be a ...

Why Is It Important to Match Inverter Size to a 200Ah Lithium ...

What size of inverter is good for a 200Ah battery? For a 200Ah battery, an inverter rated between 1000W to 2000W is typically suitable, depending on your total power ...



What Size Inverter Do I Need for a Solar Panel System?

Step 3: Selection cross-reference table for quick matching To help you choose the right size solar inverter and matching battery, a solar inverter size selection comparison table ...

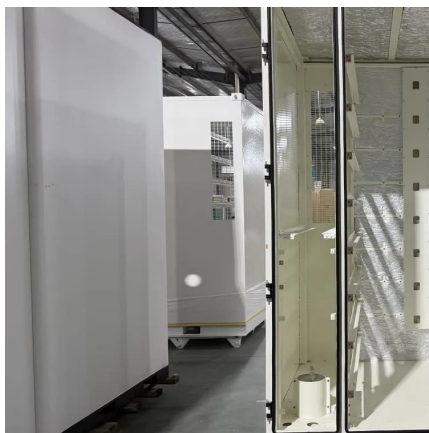
What Size Inverter Do I Need for a 400Ah Battery?

To determine the appropriate inverter size for a 400Ah battery, you need to consider the total wattage of the devices you plan to power. A general guideline is to choose ...



[What Size Inverter Do I Need? - MWXNE POWER](#)

The key to choosing a 12V, 24V or 48V inverter is to make a trade-off based on your specific application scenario. Below, I will briefly analyze the characteristics of these three ...



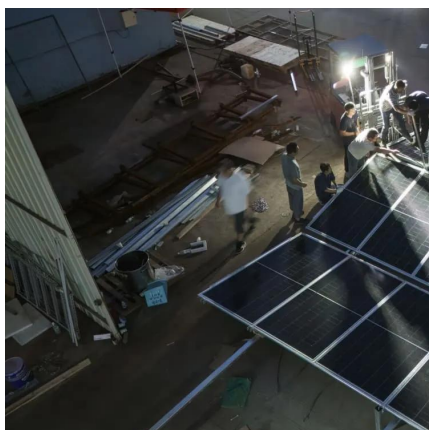
[What Size Inverter Do I Need for a 12V 100Ah Battery?](#)

This comprehensive article aims to provide detailed insights into determining what size inverter is needed for a 12V 100Ah battery while addressing common questions about ...



[What Size Inverter Is Best for a 200Ah Battery?](#)

A 200Ah battery typically pairs with a 1,500W-3,000W inverter, depending on power needs. For continuous loads, select an inverter with 1.5x your calculated wattage to avoid overloads. Pure ...





Find the Right Inverter Size: How Big An Inverter Do You need?

The right size inverter for your specific application depends on how much wattage your devices require. This information is usually printed somewhere on electronic devices, ...



What Size Inverter Do I Need For My Campervan or Motorhome: ...

This guide covers the critical factors in selecting the right size inverter you need, and includes a list of common 240V appliances and the inverter sizes required to power them efficiently.

[The 10 BEST Campervan Inverters - 2024 Power Guide](#)

The Best Campervan Inverters It can be difficult to decide on which inverter is the best for your van, especially considering how many styles and brands there are to choose ...



Calculate Battery Size For Any Size Inverter (Using Our Calculator)

Here's a battery size chart for any size inverter with 1 hour of load runtime. Note! The input voltage of the inverter should match the battery voltage. (For example 12v battery for ...



Contact Us

For catalog requests, pricing, or partnerships, please visit:
<https://bringmethehorizon.eu>