



SolarMax Pro Energy Storage Systems

What is the voltage of 12 550w photovoltaic panels connected in series





Overview

When wired in series, the 3 connected panels (often called a series "string") will have a voltage of 36 volts ($12V + 12V + 12V$) and a current of 8 amps. In this example, the series string will have no losses.

What are the different solar panel voltages?

Namely, we have to come to terms with the fact that there are several different voltages we are using for solar panels (don't worry, all of these make sense, we'll explain it). These solar panel voltages include: Nominal Voltage. This is your typical voltage we put on solar panels; ranging from 12V, 20V, 24V, and 32V solar panels.

How to calculate solar panel output voltage?

If you know the number of PV cells in a solar panel, you can, by using 0.58V per PV cell voltage, calculate the total solar panel output voltage for a 36-cell panel, for example. You only need to sum up all the voltages of the individual photovoltaic cells (since they are wired in series, instead of wires in parallel). Here is this calculation:.

Why do solar panels need to be connected in series?

Putting panels in series makes it so the voltage of the array increases. This is important because a solar power system needs to operate at a certain voltage for the inverter to work properly. So, you connect your solar panels in series to meet the operating voltage window requirements of your inverter.

What is a typical open circuit voltage of a solar panel?

To be more accurate, a typical open circuit voltage of a solar cell is 0.58 volts (at 77°F or 25°C). All the PV cells in all solar panels have the same 0.58V voltage. Because we connect them in series, the total output voltage is the sum of the voltages of individual PV cells. Within the solar panel, the PV cells are wired in series.

What if two solar panels are connected in series?



So, if you connect two solar panels with a rated voltage of 40 volts and a rated amperage of 5 amps in series, the voltage of the series would be 80 volts, while the amperage would remain at 5 amps. Putting panels in series makes it so the voltage of the array increases.

Are solar panels rated higher than system voltage?

The solar panels are of voltage rating higher than the system voltage. You have two different higher voltage solar panels, i.e., one 100W/24V and one 200W/24V that you want to connect to the already working 12 V solar power system comprising the two 12V 50 W solar panels connected in parallel from the previous scenario (see the picture above).



What is the voltage of 12 550w photovoltaic panels connected in se



Solar Panel Wiring Basics: Complete Guide & Tips to Wire a PV ...

A series-parallel connection combines the benefits of wiring solar panels in series vs parallel. To wire solar panels under this configuration, follow the next steps: Connect solar ...

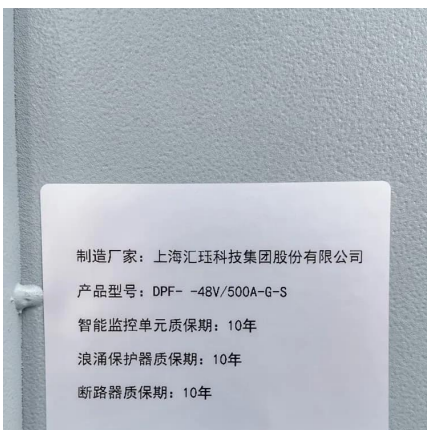
Solar Panel Series Vs Parallel: Wiring, Differences, ...

Whether you connect solar panels in series or in parallel, the total power output (in Watts) is the sum of the power generated by each solar ...



Solar Panel Voltage Calculator, Formula, Panel Volts Calculation

It represents the total voltage output of a series-connected array of solar panels. This voltage is important because it influences both the efficiency of energy conversion and compatibility with ...



Solar Panel Voltage Calculator

After clicking the button, the solar panel voltage calculator will display your maximum open circuit voltage. It also recommends a charge controller



for your solar array ...

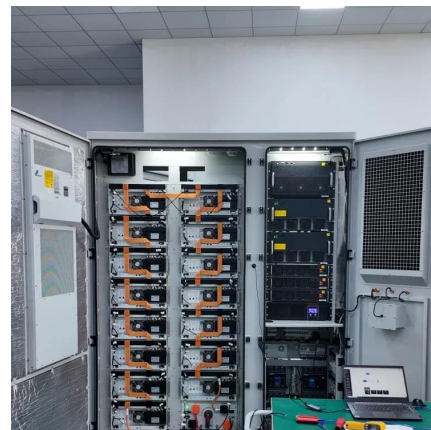


Mixing solar panels - Dos and Don'ts

When you connect solar panels in series, the total output current of the solar array is the same as the current passing through a single panel, while the total output voltage is a sum of the ...

How To Connect Solar Panels?

Understanding Solar Panel Wiring Basics Voltage and Current Voltage (V): The electrical potential difference between two points. Current (I): The flow of electric charge. ...



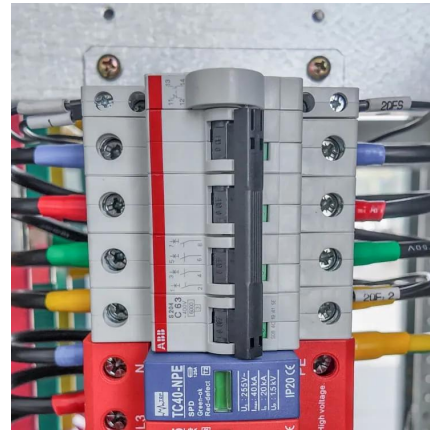
How Many Solar Panels Can One Inverter Handle?

Step 2: Assess Solar Panel Voltage Output Sum the voltages of individual solar panels that will be connected in series to form a string. Step 3: ...



How to Wire Solar Panel & Batteries in Series for 24V ...

Series Connection of Solar Panels and Batteries with Automatic UPS System - 24V Installation In this solar panel wiring installation tutorial, we will show how ...



[Solar Panel Series & Parallel Calculator](#)

When wired in series, the 3 connected panels (often called a series "string") will have a voltage of 36 volts (12V + 12V + 12V) and a current of 8 amps. In this example, the ...

Solar Panel Voltage Calculator

The voltage output of the photovoltaic (PV) panels in solar photovoltaic (PV) systems almost always falls somewhere in the range of 12 to 24 volts. The overall voltage ...



[How many 550w solar panels can be connected in ...](#)

The number of 550W solar panels that can be linked in series is primarily dictated by the voltage limitations of the components within the solar ...



[Solar Panel Wiring Basics: Wiring PV Panel In Series ...](#)

Learn solar panel wiring in series and parallel. Optimize your system by understanding voltage, current, and best wiring practices.



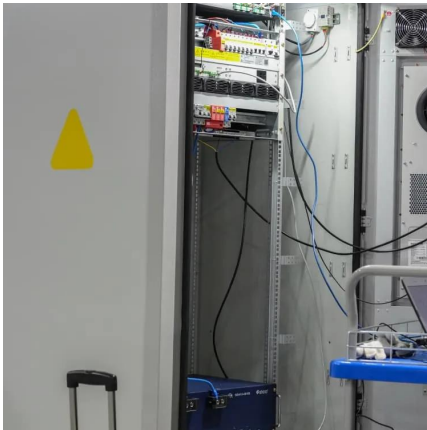
How Series Vs Parallel Wired Solar Panels Affects Amps & Volts

Since series wired solar panels get their voltages added while their amps stay the same, we add $24V + 24V + 24V$ to show the total array voltage of 72 Volts while the Amps remain at 4 Amps. ...

[How to Wire Solar Panels in Series \[Expert Guide\]](#)

You can connect multiple solar panels in series or parallel--but the series method is recommended. Wire solar panels in series with tips from the experts.





[How many 550w solar panels can be connected in series?](#)

The number of 550W solar panels that can be linked in series is primarily dictated by the voltage limitations of the components within the solar power system, namely the ...

[Can You Mix Solar Panels with Different Wattages?](#)

The Two Ways to Connect Solar Panels There are two main ways to connect solar panels: 1. Series Connection (Like Christmas Lights) With ...



[The Difference Between Series & Parallel Connections](#)

Understanding Series and Parallel Solar Panel Connections In this instructional video, we explore how to connect solar panels in series and parallel ...

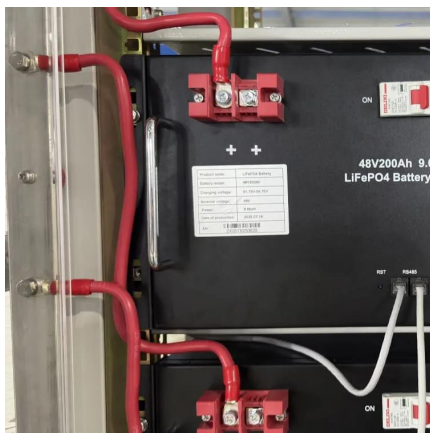
[A Visual Guide to Solar Panel Series Connection](#)

Learn about the series connection diagram for solar panels and how it can help in increasing the voltage and power output of your solar system.



[How To Wire Solar Panels In Series Vs. Parallel](#)

So, if you connect two solar panels with a rated voltage of 40 volts and a rated amperage of 5 amps in series, the voltage of the series would be 80 volts, while the amperage would remain ...



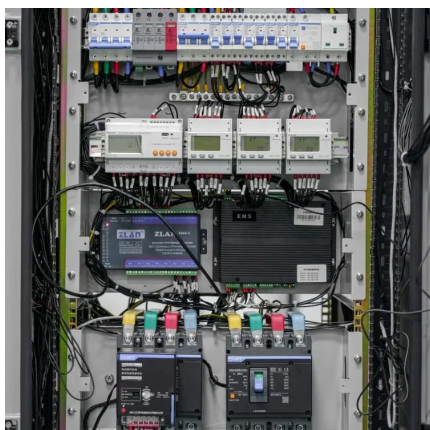
[Amazon : Renogy 2PCS Solar Panel Kit 550 Watts 12/24 ...](#)

A:Solar panels can be connected in series or in parallel to meet your electrical circuit size and power needs nnecting solar panels in series, the operating voltage output will add up while the current output will remain the same as a single solar panel.When connecting solar panels in ...



Free Solar Battery Calculator: Calculate Fast & Easy The Solar Battery

By using the very same solar battery calculator you can define as well the number of solar batteries connected in parallel if your solar battery bank is composed of solar batteries ...





Solar Panel Output Voltage: How Many Volts Do PV Panel ...

To be more accurate, a typical open circuit voltage of a solar cell is 0.58 volts (at 77°F or 25°C). All the PV cells in all solar panels have the same 0.58V voltage. Because we connect them in ...



[How Series Vs Parallel Wired Solar Panels Affects ...](#)

Since series wired solar panels get their voltages added while their amps stay the same, we add $24V + 24V + 24V$ to show the total array voltage of 72 Volts ...

Photovoltaic (PV) Panel Technical Specifications , The Sun Pays

Maximum Power Voltage (V_{mp}): Voltage at which the panel produces peak power
Short-Circuit Current (I_{sc}): Current when the panel is shorted
Maximum Power Current (I_{mp}): Current at ...



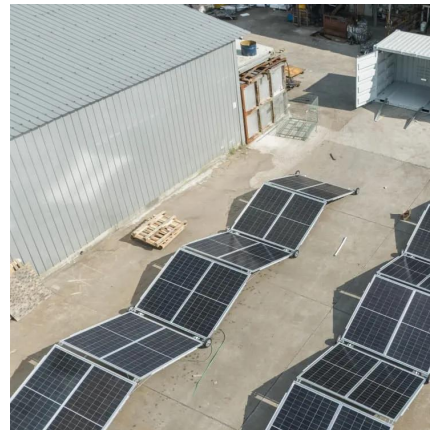
Solar Panel (Power) Calculator

Solar Panel Calculator is an online tool used in electrical engineering to estimate the total power output, solar system output voltage and current when the number of solar panel units ...



Solar Panel Output Voltage: How Many Volts Do PV ...

To be more accurate, a typical open circuit voltage of a solar cell is 0.58 volts (at 77°F or 25°C). All the PV cells in all solar panels have the same 0.58V ...



Contact Us

For catalog requests, pricing, or partnerships, please visit:
<https://bringmethehorizon.eu>