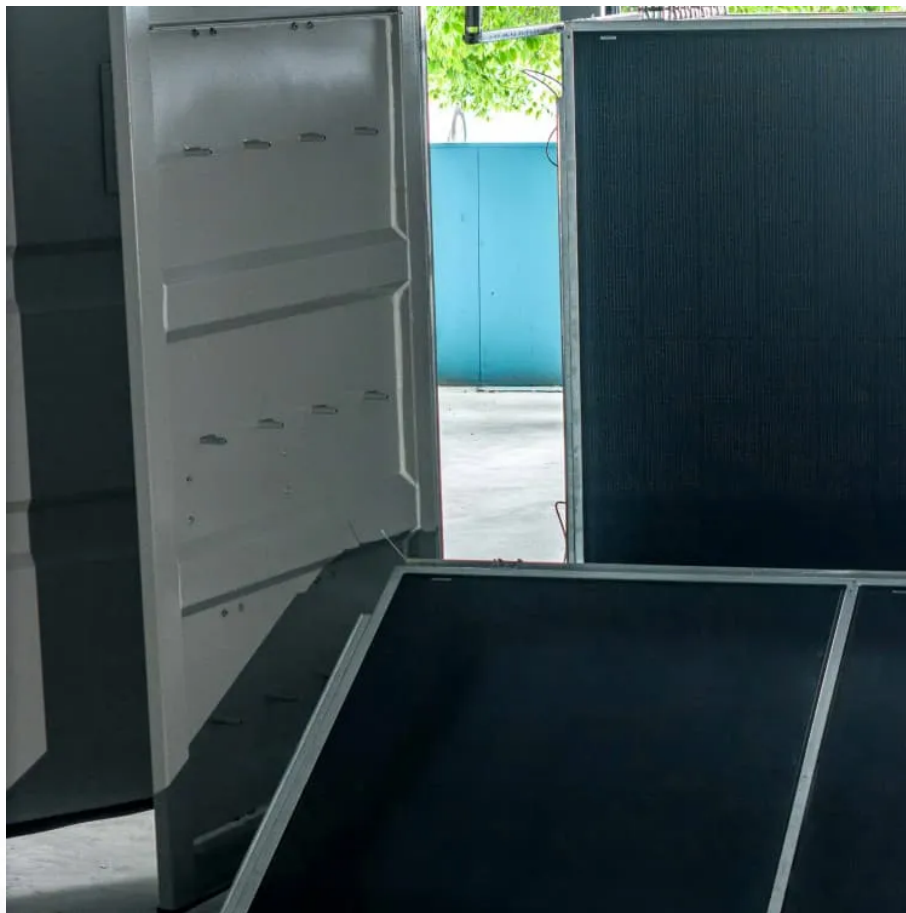




SolarMax Pro Energy Storage Systems

What is the size of a single photovoltaic panel





Overview

When considering the installation of solar panels, understanding their size is crucial for energy production and logistical planning. A standard residential solar panel typically measures around 65 inches by 39 inches (approximately 5.4 feet by 3.25 feet). What are the different sizes of solar panels?

There are 3 standardized sizes of solar panels, namely: 60-cell solar panels size. The dimensions of 60-cell solar panels are as follows: 66 inches long, and 39 inches wide. That's basically a 66×39 solar panel. But what is the wattage?

That is unfortunately not listed at all. 72-cell solar panel size.

How big is a residential solar panel?

A single residential solar panel typically has 60 PV solar cells and measures 5.4 feet by 3.25 feet (65 inches long by 39 inches wide). The panels are between 1.5 to 2 inches deep. Most 60-cell residential solar panels produce around 300 watts of power each.

How many solar cells are in a solar panel?

Multiple solar cells are assembled together to form a rectangular shaped panel. The standard solar panel size typically contains either 60 or 72 cells. You can also find panels with as few as 32 solar cells on recreational vehicles, as well as some larger commercial panels with as many as 96 cells.

How does solar panel size affect a home?

Solar panel size directly affects: Choosing the right dimensions ensures that your system fits your space while generating enough electricity to meet your needs. Let's explore the most common solar panel size dimensions available today: 1. Residential Solar Panels These are the most popular panels for homes. 2. Commercial Solar Panels.

How many Watts Does a solar panel produce?



Most 60-cell residential solar panels produce around 300 watts of power each. Commercial solar panels typically include 72 solar cells and measure up to 6 feet wide (78 inches long by 39 inches wide). As with residential solar panels, commercial models are between 1.5 to 2 inches deep.

What is a large size solar panel?

Large-Size Solar Panels: On the other end of the spectrum, typical large solar panels measure approximately 200 x 110 cm. These dimensions are used when space is not a significant constraint. Larger panels help optimize the overall system cost by reducing the need for mounting supports and cabling.



What is the size of a single photovoltaic panel



[How Many kWh Does A Solar Panel Produce Per Day?](#)

Solar Panel Size (Wattage). Most common solar panel sizes include 100-watt, 300-watt, and 400-watt solar panels, for example. The bigger the rated wattage of a solar panel, the more kWh ...

[Solar Panel Sizes, Dimensions & Weight , Solar Choice](#)

Standard residential solar panels contain 60 solar cells (or 120 half-cut solar cells) and typically generate anywhere from 350W to 500W of electricity. The size of these panels ...



A Guide on Calculating Area Required for Solar Panel Installation

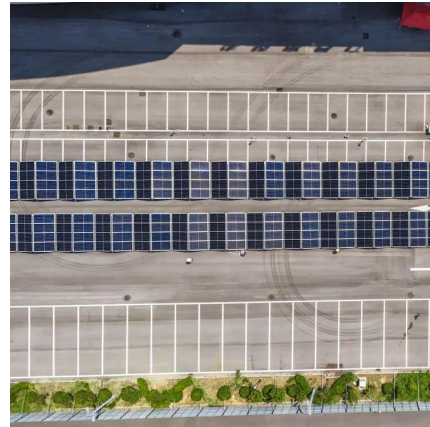
Also, while installing the panels, some space is left between rows and columns for easier maintenance and cleaning. What is the standard size of a quality solar panel? The ...

[How to Do Solar Panel Calculations? \(Complete ...](#)

Are you considering installing solar panels in your home? Taking advantage of solar energy



can save you money and reduce your carbon ...



Understanding Solar Panel Dimensions In 2025: A Complete Size ...

Explore the most common solar panel dimensions in 2025, including residential and commercial sizes. Learn how solar panel size dimensions affect power, installation, and ...

Standard Solar Panel Sizes And Wattages (100W-500W ...

The goal here is to get to the average solar panel size by wattage. You can find typical dimensions of 100W, 150W, 170W, 200W, 200W, 220W, 300W, 350W, 400W, and 500W solar ...



1000 Watt Solar Panel Systems: Everything You Need ...

Introduction 1000 Watt Solar Panel Systems: EVERYTHING You NEED to Know 1000 watt solar panel system is one of the most popular sizes for solar panel ...



How to Calculate the Surface Area Required by Solar ...

Lets assume that you want to install 10 solar panels rated at 100 Watts each and having a conversion efficiency of 18%. The total power output ...



Understanding the Size of One Solar Panel: A ...

Most panels typically weigh between 40 to 50 pounds, which indicates that the size of one solar panel is roughly 18 kg for a standard 60 ...

Design and Sizing of Solar Photovoltaic Systems

The direction that a solar panel faces is referred to as its orientation. The orientation of the solar array is very important as it affects the amount of sunlight hitting the array and hence the ...



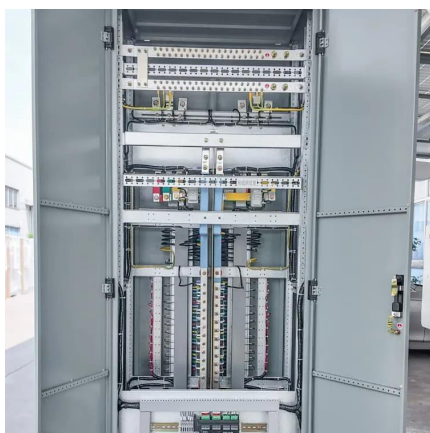
Solar Panel Sizes, Dimensions & Weight. Solar Choice

There isn't one single answer to the question "How big are solar panels?" but the size of the solar panels you install for residential or ...



[The best solar panel size guide every homeowner needs](#)

Learn how to choose the ideal solar panel size for your home with charts, standard dimensions, and tips to calculate size per kW in this complete ...



What is the Size of a Solar Panel?

Most solar panels weigh between 35 to 50 pounds, on average. Each roof mount is typically manufactured to hold two panels and is built to hold and distribute those 70-100 ...

[How Big is a Solar Panel? The Solar Panel Size Guide](#)

For a residential solar panel, size is fairly consistent across manufacturers: 65 inches (1.65 meters) by 39 inches (1 meter) is the average solar panel size that you find on the roofs of ...





How Big Is a Single Solar Panel?

A standard residential solar panel typically measures around 65 inches by 39 inches (approximately 5.4 feet by 3.25 feet). However, sizes can vary based on the panel's ...

What is the Average Size of Solar Panel?

A solar panel is the main product of solar energy. It generates electricity from the sunlight during the daytime or sunny hours. Many consumers want to know what the size of a ...



Solar Panel Size Guide (with 4 Charts)

Solar panel sizes are measured in two ways: watt output and physical dimensions. Physical dimensions refer to the height, length and width of the solar array. The wattage refers to how ...

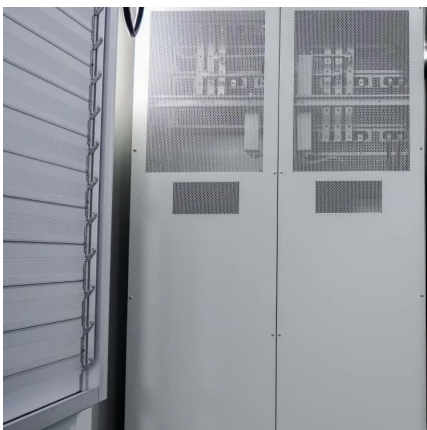
2025 Solar Panel Costs: Ultimate Guide to Pricing and Savings

Get multiple binding solar quotes from solar installers in your area. How much do solar panels cost on average? As of 2025, the average cost of residential solar panels in the ...



[How Big Are Residential Solar Panels?](#)

A typical residential solar panel size is approximately 65x39 inches, covering an area of 16 square-feet for a standard 60-cell panel. [How Many Solar Panels ...](#)



[Standard Solar Panel Sizes And Wattages \(100W ...](#)

The goal here is to get to the average solar panel size by wattage. You can find typical dimensions of 100W, 150W, 170W, 200W, 200W, 220W, 300W, 350W, ...



[Solar Panel Dimensions: What You Need to Know Before ...](#)

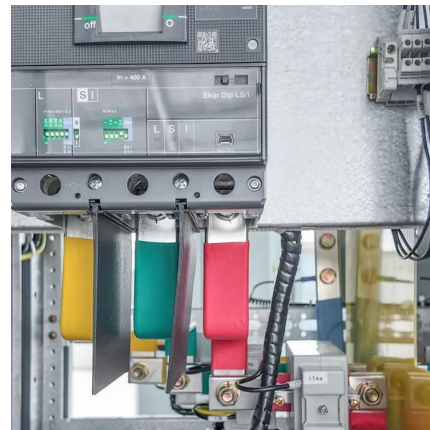
Discover the ideal solar panel sizes for your installation. Learn about common dimensions, types of panels, and space requirements for residential and commercial solar ...





[Solar Panel Dimensions: What You Need to Know ...](#)

Discover the ideal solar panel sizes for your installation. Learn about common dimensions, types of panels, and space requirements for ...



[How Much Energy Does A Solar Panel Produce?](#)

A solar panel's output rating, or wattage, is the best indicator of its power production. The amount of electricity your solar panels produce directly ...

[Solar Panel Sizes, Dimensions & Weight, Solar Choice](#)

Standard residential solar panels contain 60 solar cells (or 120 half-cut solar cells) and typically generate anywhere from 350W to 500W of ...



Understanding the Size of One Solar Panel: A Complete Tutorial ...

Most panels typically weigh between 40 to 50 pounds, which indicates that the size of one solar panel is roughly 18 kg for a standard 60-cell, 1.7m² panel and around 23.5 kg for a ...



Solar Panels Size & Weight (Including Commercial Dimensions)

Individual PV solar cells are thin slices of silicon that typically measure 6 inches long by 6 inches wide. Multiple solar cells are assembled together to form a rectangular ...



Contact Us

For catalog requests, pricing, or partnerships, please visit:
<https://bringmethehorizon.eu>