



SolarMax Pro Energy Storage Systems

What is the rated power of an inverter





Overview

What is rated output power of inverter?

The rated output power of inverter is the continuous output power, which refers to the output power of the inverter under the rated voltage current. It is the power that can be continuously and stably output for a long time.

How to choose a power inverter?

But if the electrical motor with the inductive load, choose the capacity of the inverter, it must consider the starting power of the electrical appliances. Rated power and peak power are different due to their meaning. The rated power determines the load capacity, and the peak power determines whether the appliance can be started.

How much power does an inverter need?

It's important to note what this means: In order for an inverter to put out the rated amount of power, it will need to have a power input that exceeds the output. For example, an inverter with a rated output power of 5,000 W and a peak efficiency of 95% requires an input power of 5,263 W to operate at full power.

What are inverter specifications?

Specifications provide the values of operating parameters for a given inverter. Common specifications are discussed below. Some or all of the specifications usually appear on the inverter data sheet. Maximum AC output power This is the maximum power the inverter can supply to a load on a steady basis at a specified output voltage.

Why should you choose a solar inverter rated in kW?

Inverters must handle peak solar input, battery charging, and load output—all at once. Choosing an inverter rated in kW (not just kVA) gives you a clearer view of real usable power. This prevents undersizing and keeps your solar-



storage system running efficiently.

How to choose a DC/AC inverter?

Hence, when purchasing a DC/AC inverter, you should refer to the nominal power. In other words, if your installer tells you that you need a 1000 W inverter, they are referring to the nominal power. Additionally, we recommend checking out our post [Example of selecting a DC/AC inverter by AC output voltage and power](#).



What is the rated power of an inverter

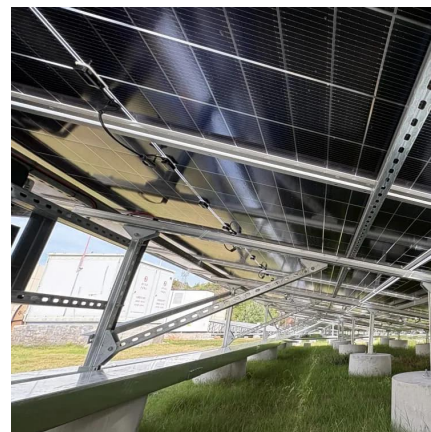


[Understanding Inverter Input And Output: What Is The ...](#)

Inverters are devices that play an important role in modern, green, and clean electrical systems. They work by converting the power obtained from the DC ...

[Performance parameters of solar inverters](#)

The rated capacity of an inverter is the product of the rated output voltage and the rated output current when the output power factor is 1 (i.e. pure resistive load). 6. Rated output ...



[Understanding Inverter Power Ratings: kW vs kVA ...](#)

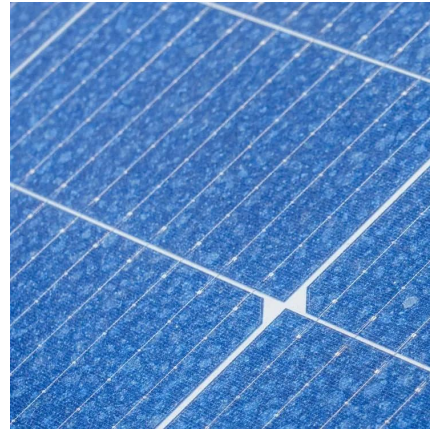
kW refers to the real or usable power output of an inverter. kVA represents the total power capacity it can carry, including power lost in phase difference ...

[How to Read Solar Inverter Specifications](#)

The nominal AC output power refers to the peak power the inverter can continuously supply to



the main grid under normal conditions. It is almost similar to the rated ...



[How to Read Solar Inverter Specifications](#)

Solar inverters play a crucial role in converting the direct current (DC) power generated by solar panels into usable alternating current (AC) power for your ...

Understanding Inverter Power Ratings: kW vs kVA Explained

kW refers to the real or usable power output of an inverter. kVA represents the total power capacity it can carry, including power lost in phase difference (reactive power). For example, ...



[How To Read And Interpret An Inverter Specification](#)

Wattage is the output power of an inverter expressed in units of Watts (W). Wattage can be divided into two categories: continuous wattage and peak or surge wattage.



[The Most Comprehensive Guide to Grid-Tied Inverter ...](#)

Detailed Parameters of Grid-Tied Inverters Model and Naming Growatt grid-tied inverters are named based on their rated AC output power. For example, the ...



[Inverter Peak Power vs Rated Power: What it is and ...](#)

Rated power, also known as continuous power, is the maximum amount of power that an inverter can consistently deliver over a long period, ...

What is the difference between rated power and peak power of inverter?

Rated power and peak power are different due to their meaning. The rated power determines the load capacity, and the peak power determines whether the appliance can be ...



[Inverter Specifications and Data Sheet](#)

The article provides an overview of inverter functions, key specifications, and common features found in inverter systems, along with an example of power calculations and inverter ...



1000W Inverter Guide: Basics, What Can It Power & Recommends

A 1000W inverter is suitable for home emergency backup power, outdoor camping, or mobile office use. The rated power of a 1000W inverter is the maximum power it can ...



[What is the Peak Output Power of a Power Inverter?](#)

The continuous output power is the rated output power, and the peak output power is generally twice the rated output power. It is worth mentioning that the operating ...

[Inverter Specifications and Data Sheet](#)

During our research, we discovered that most inverters range in size from 300 watts up to over 3000 watts. In this article, we guide you through the different inverter sizes. ...



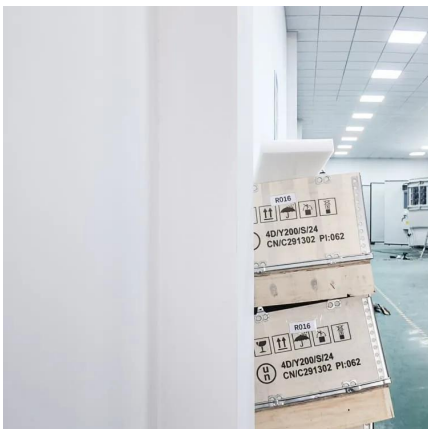


[The Only Inverter Size Chart You'll Ever Need](#)

During our research, we discovered that most inverters range in size from 300 watts up to over 3000 watts. In this article, we guide you through the different inverter sizes. ...

[How to Read Solar On Grid Inverter Data Sheet?](#)

Overall, the rated output voltage of an on-grid inverter is a fundamental parameter that influences its compatibility, performance, and reliability within the grid-connected solar ...

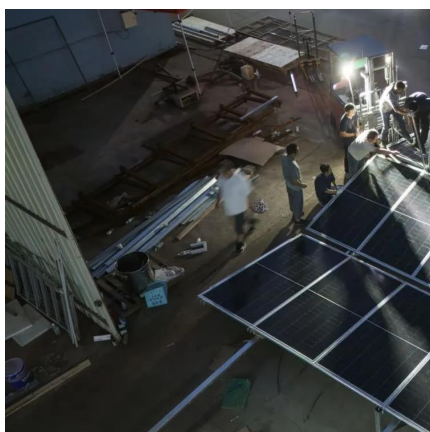


[Definition of Inverter Specifications](#)

Start by specifying the inverter type. You may select central inverter, microinverter, or hybrid inverter. Manufacturer. This specifies the company that produce the inverter. Model. This is ...

Inverter Power Calculator & Formula Online Calculator Ultra

Inverters are essential for converting DC (direct current) to AC (alternating current), enabling the use of household appliances, tools, and electronics with batteries or solar power ...



Lesson 5: Solar inverter oversizing vs. undersizing

Undersizing a solar system inverter is a smart choice when building a solar system because that actually increases the daily amount of power produced.

INVERTERS

The rated output power (in Watts) of the inverters is normally specified for resistive type of loads that have unity (1) Power Factor. In a reactive type of load, the phase angle \emptyset of the sine wave ...



Advice on selecting an inverter - Sinetech

Inverters are rated in continuous power and peak/surge power. Continuous power is the total WATTS the inverter can support indefinitely while peak/surge power is the amount of power ...



What is the difference between rated power and peak ...

Rated power and peak power are different due to their meaning. The rated power determines the load capacity, and the peak power ...



Inverter Current Calculator

How to Use the Inverter Current Calculator To use the inverter current calculator, follow these steps: Input the power rating (in watts or kilowatts) of your inverter.

How To Read And Interpret An Inverter Specification

Wattage is the output power of an inverter expressed in units of Watts (W). Wattage can be divided into two categories: continuous wattage and peak or ...



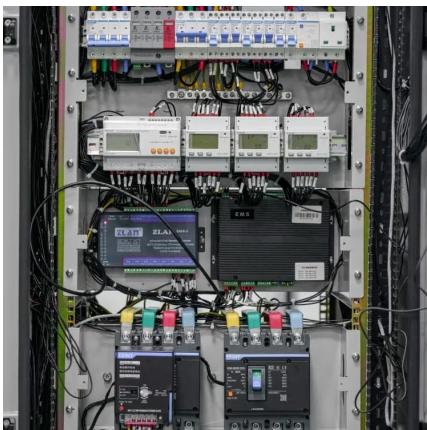
Why Does Power Inverter Output Power Not Reach Rated Power

What Is Rated Power on a Power Inverter? The rated power refers to the maximum continuous power the inverter can supply under ideal conditions, usually expressed in watts ...



What is "POWER FACTOR" in the specs for an inverter? How ...

What is "POWER FACTOR" in the specs for an inverter? How efficient the inverter is? For example would a power factor of 95% mean that you lose 5% to the inverter process ...

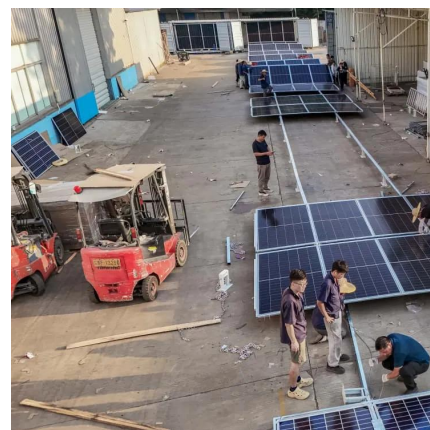


Inverter Peak Power vs Rated Power: What it is and Why It Matters

Rated power, also known as continuous power, is the maximum amount of power that an inverter can consistently deliver over a long period, usually in watts (W). Under normal ...

Interpreting inverter datasheet and main parameters , AE 868

Each inverter comes with a maximum recommended PV power, or sometimes is referred to as "DC-AC Capacity factor," which is defined as the percentage of DC power over the inverter's ...





Contact Us

For catalog requests, pricing, or partnerships, please visit:
<https://bringmethehorizon.eu>