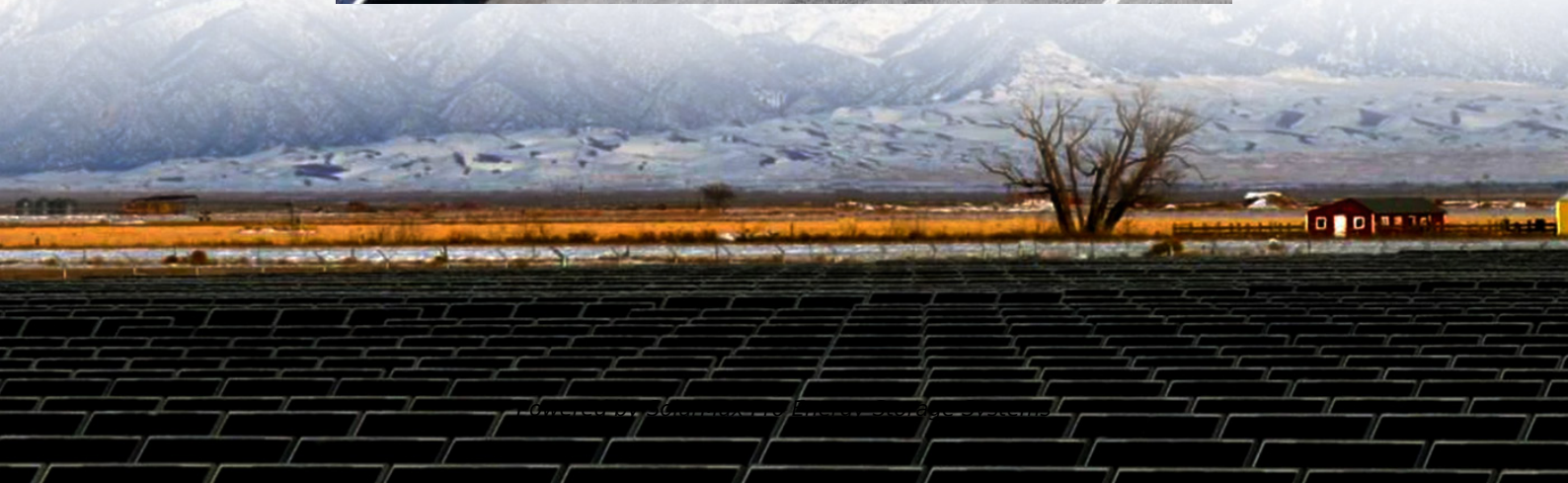




SolarMax Pro Energy Storage Systems

What is the main function of the communication base station inverter





Overview

What is the role of a base station in wireless communication?

Base stations are critical components in wireless communication networks, serving as the intermediary between mobile devices and the core network. They play a vital role in ensuring seamless connectivity, efficient data transmission, and reliable communication services.

What is a base transceiver station?

One key component in mobile networks is the Base Transceiver Station, often abbreviated as BTS. But what is base transceiver station, and why is it so crucial to the functioning of our mobile phones?

At its core, a BTS is the equipment that facilitates wireless communication between the mobile network and your phone.

What are the functions of a base station?

1. Signal Transmission and Reception: One of the primary roles of a base station is to transmit and receive signals from mobile devices within its coverage area. It converts data signals into radio waves and vice versa, facilitating communication between users and the network. 2.

What is a base station in telecommunications?

In telecommunications, a base station is a fixed transceiver that is the main communication point for one or more wireless mobile client devices. A base station serves as a central connection point for a wireless device to communicate.

What is a Base Transceiver Station (BTS)?

The Base Transceiver Station (BTS) is a critical component of the cellular network architecture, particularly in the GSM (Global System for Mobile Communications) network. It plays a fundamental role in ensuring gsm



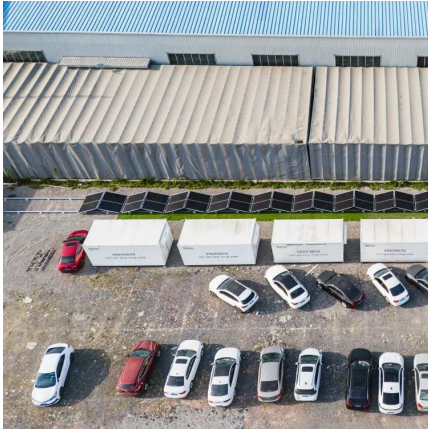
architecture in wireless communication between mobile devices and the network infrastructure.

Why are base stations important in cellular communication?

Base stations are important in the cellular communication as it facilitate seamless communication between mobile devices and the network communication. The demand for efficient data transmission are increased as we are advancing towards new technologies such as 5G and other data intensive applications.



What is the main function of the communication base station invert



[IoT Glossary: Base Station Controller Explained](#)

In the intricate tapestry of wireless communication, a base station emerges as a linchpin, playing a pivotal role in connecting the dots of modern connectivity. Let's delve into ...

What Is the Role of a Base Station in Wireless Communication?

Base stations are critical components in wireless communication networks, serving as the intermediary between mobile devices and the core network. They play a vital role in ...



Understanding the Basics: What is a Base Transceiver Station?

At its core, a BTS is the equipment that facilitates wireless communication between the mobile network and your phone. This piece of technology is the backbone of ...

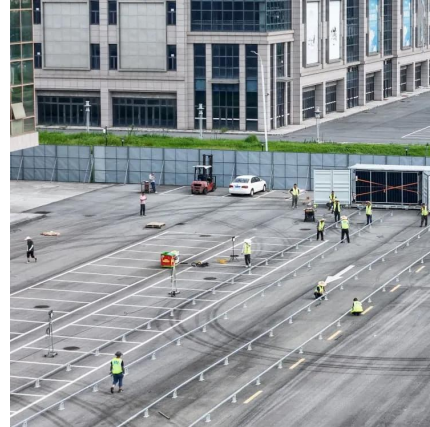


[Understanding Wireless Base Stations: Definition and ...](#)

A wireless base station is an important component of cellular networks. It serves as a



hub that connects mobile devices to the broader ...



Base Transceiver Stations (BTS)

What is a Base Transceiver Station? A Base Transceiver Station, commonly known as BTS, is a critical piece of equipment in wireless communication networks.

What is Base Station?

Nowadays, networking has become a crucial part of our daily lives. To implement network services for users, base station plays an essential role to constitute a ...



The Base Station in Wireless Communications: The ...

When a phone starts a conversation, the Base Station Controller allocates a time slot to it. The phone uses this slot until the end of the ...



What is the function of the Base Transceiver Station (BTS)?

Here's a detailed description of the functions and responsibilities of the BTS: The primary function of the BTS is to establish and maintain radio communication with mobile ...



Base transceiver station

Provides transmission and reception of signals. It also does sending and reception of signals to and from higher network entities (like the base station controller in mobile telephony). This can ...

Base Station Radio Rig: Definition, Functions, and Advantages

The functions of a base station radio rig include communication setup to repeater provision. Moreover, the advantages include reliable long-distance communication, robust ...



What is a base station?

In telecommunications, a base station is a fixed transceiver that is the main communication point for one or more wireless mobile client devices. A base station serves as ...



Base Stations

Backhaul Connection: The backhaul connection links the base station to the core network in the mobile communication system. It provides for the interchange of data between ...



What Are The Components Of An Inverter

Main Components Of An Inverter Understanding the components of an inverter is crucial to learning how it functions. Below are the primary components that make up an ...

What Does The Inverter Do In A Portable Power Station?

Whether you require a pure sine wave inverter for sensitive electronics or a modified sine wave inverter for basic tasks, the inverter is essential for maximizing the performance, ...



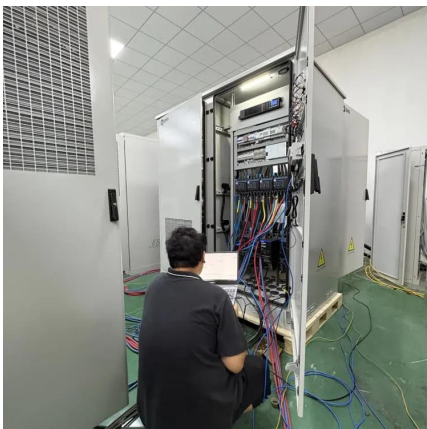


The Base Station in Wireless Communications: The Key to ...

When a phone starts a conversation, the Base Station Controller allocates a time slot to it. The phone uses this slot until the end of the conversation. A maximum of 8 ...

Main

Anatomie humaine concernant Main
Organe terminal du membre supérieur, elle a un rôle sensitif et de préhension. Elle est paire et asymétrique. Elle est formée de 27 os constants ...



Base Station

A Bluetooth base station: This is a device that serves as the hub of a Bluetooth network, transmitting and receiving signals to and from Bluetooth-enabled devices. Overall, a base ...

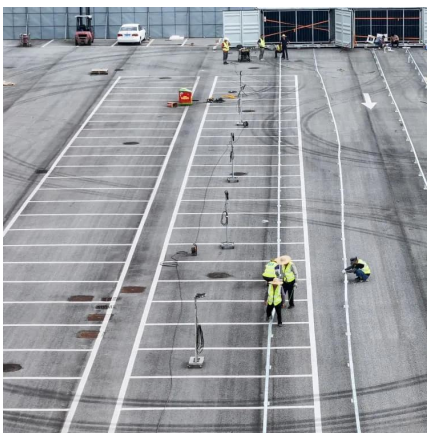
Main : anatomie, pathologies, examens, traitements, qui consulter

La main est un formidable outil capable de saisir, toucher, manipuler... Exploration de l'anatomie de la main et de ses affections.



Traduction main en Français , Dictionnaire Anglais-Français

traduction main dans le dictionnaire Anglais - Français de Reverso, voir aussi 'main clause, main course, main drag, main line', conjugaison, expressions idiomatiques



What Is An Inverter? , Definition, Types, Uses, How It ...

Understanding what an inverter does, its components, types, and applications is essential for anyone interested in renewable energy, electrical ...



Communication Base Station Energy Power Supply System

The wind-solar-diesel hybrid power supply system of the communication base station is composed of a wind turbine, a solar cell module, an integrated controller for hybrid energy ...





What is base transceiver station components

A Base Transceiver Station (BTS) is a crucial component of a cellular network, responsible for facilitating wireless communication between user equipment (UE) like mobile ...



Le Corps Humain

Situés dans la main, ils transmettent les mouvements précis des doigts. Les muscles interosseux, se distinguent selon leur situation, en dorsaux (dos de la main) ou palmaires (paume), et ...

Common faults and solutions of inverters , Solar Inverter, Inverter

In the daily maintenance of power stations, perfect safety protection measures and good standardized operation and maintenance are also the key to ensuring the profitability of power ...



Inverter and Types of Inverters with their Applications

One function of Grid-connected inverter is to supply AC power to AC loads from storage devices (DC sources) while the other function of grid-connected ...



Contact Us

For catalog requests, pricing, or partnerships, please visit:
<https://bringmethehorizon.eu>