



SolarMax Pro Energy Storage Systems

What is the charging current of the base station battery





Overview

How does a base battery work?

This process is called grid-balancing. Base batteries deploy energy to the grid faster than any other service, which is how Base is able to recoup the cost of the battery equipment and keep prices low for homeowners. The charge level of your Base battery will naturally fluctuate over time, rising and falling throughout a multi-day cycle.

How do you charge a lithium ion battery?

Lithium-ion batteries are typically recharged at a Constant current-constant voltage mode. Before beginning to charging, check the battery voltage. If the battery is almost depleted, the charging current will be used to restore its voltage, resulting in an increase in voltage.

What is a good charge current for a battery?

(Recommended) Charge Current – The ideal current at which the battery is initially charged (to roughly 70 percent SOC) under constant charging scheme before transitioning into constant voltage charging. (Maximum) Internal Resistance – The resistance within the battery, generally different for charging and discharging.

What is a base battery system?

The Base battery system is built for performance and reliability. It combines a high-capacity lithium iron battery with intelligent software to optimize energy use. The Base battery system has three main components: the battery pack, inverter, and hub. The long white unit is the battery pack. We mount the battery pack on the ground.

What happens when a battery is fully charged?

The charging current of the battery steadily lowers down, and the charging rate slows down when the voltage is sustained at charge cut-off voltage. When



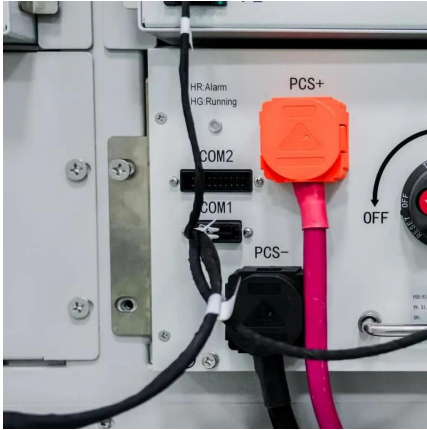
the batteries are fully charged, the charging current drops to 0.1C.

How does charging current affect a lithium ion battery?

As it gets to its normal voltage level, the charging current is increased significantly until it reaches 85% of its capacity. After the target voltage level is achieved, the charging current decreases and the battery gradually gets charged up to 100%. The amount of the charging current significantly impact the lithium-ion batteries' cycle life.



What is the charging current of the base station battery

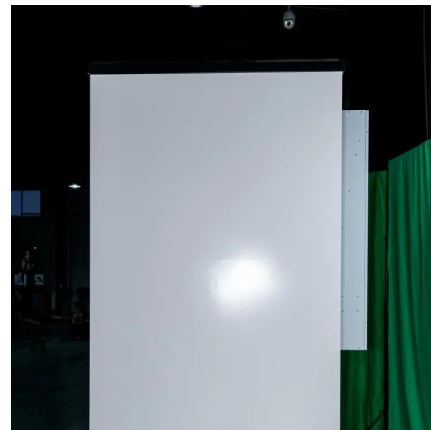


[Battery as a primary power source in a base station ...](#)

You will need to limit both the voltage AND the current from the power supply to use it as a charger for the battery, and you will have to ...

[How the Base battery works: A complete guide to grid ...](#)

The charge level of your Base battery will naturally fluctuate over time, rising and falling throughout a multi-day cycle. This is a normal and necessary part of how the system operates, ...



[Base Station Battery Module 51.2V 100Ah 5.12kWh](#)

Base Station Battery Module 51.2V 100Ah 5.12kWh. Lithium Iron Phosphate can be used in most applicatio that use Lead Acid, GEL or AGM type batteries.

[Grid-Scale Battery Storage: Frequently Asked Questions](#)

What is grid-scale battery storage? Battery storage is a technology that enables power



system operators and utilities to store energy for later use. A battery energy storage system (BESS) is ...



[How the Base battery works: A complete guide to grid ...](#)

The charge level of your Base battery will naturally fluctuate over time, rising and falling throughout a multi-day cycle. This is a normal and necessary part of ...

[Understanding Basic Charging Parameters: Voltage, ...](#)

During charging, the charger needs to provide enough current multiplied by the charging time to meet the total capacity of the battery. For ...



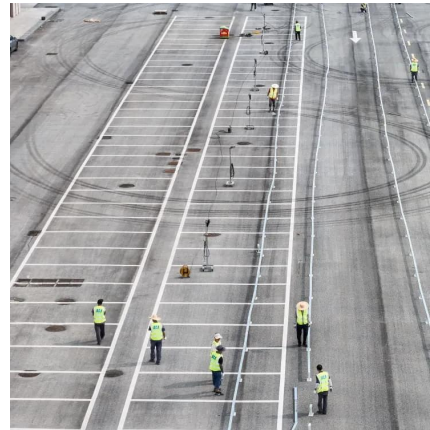
[Guide to Calculating Battery Charging Current and Time](#)

Why Calculating Charging Current and Time Matters Accurate calculation of Charging Current and Time ensures that batteries are charged within their safe operating ...



Station Battery

As a battery's power throughput is only limited by the power demanded and supplied, it can take any amount of power and supply any amount of power. This means that it ...



Baseus Blade Charging Station 140W, 6-in-1 Compact USB C ...

Baseus Blade Charging Station 140W, 6-in-1 Compact USB C Power Strip with 5ft Detachable Flat Extension Cord, Digital Display, Slim Fast Desktop Charger for Work and ...

[Base station battery charging and discharging test](#)

What is a battery charge-discharge procedure? The research method used is a (new) battery charge-discharge procedure. Parameters are analyzed by determining the on-site battery ...



Charging current - calculation and related knowledge and FAQs

Charging current refers to the amount of current required to optimally charge a battery. Charging current depends on a few factors, which will be discussed later on, but ...



Charging current - calculation and related knowledge ...

Charging current refers to the amount of current required to optimally charge a battery. Charging current depends on a few factors, which ...



[Base station battery charging current](#)

Therefore, the charging process basically works the same way in a charging cradle as in the base station's charging slot. However, the charging currents in some base stations are lower than in ...

[Base batteries not charging . SimpliSafe Support Home](#)

Firmware 2.10 (January 2023) added a new feature that allows your system to detect when the Base Station's batteries are not able to charge correctly. If it detects an issue, you'll get the ...





[Base batteries not charging , SimpliSafe Support Home](#)

Firmware 2.10 (January 2023) added a new feature that allows your system to detect when the Base Station's batteries are not able to charge correctly. If it ...

[Battery storage power station - a comprehensive guide](#)

A battery storage power station, also known as an energy storage power station, is a facility that stores electrical energy in batteries for later use. It plays a vital ...

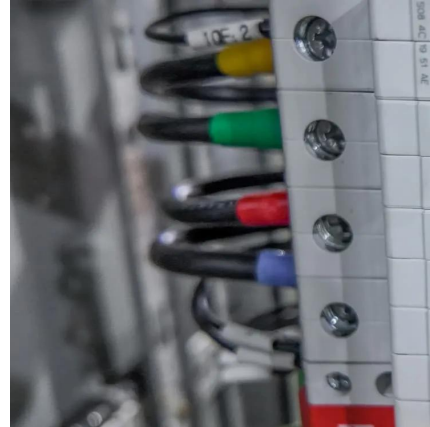


Battery as a primary power source in a base station setup

You will need to limit both the voltage AND the current from the power supply to use it as a charger for the battery, and you will have to actively monitor the battery's voltage while it ...

[USB Power Delivery and Charging Battery-Powered ...](#)

The original USB 2.0 specification limited the power that could be drawn from any USB port to 500mA. This is plenty to charge smaller batteries ...



Charging Current in Transmission Line

Significance of charging current It reduces the load current, due to which line losses decreases, and hence the efficiency of the line is increased. It improves ...



Understanding Basic Charging Parameters: Voltage, Current, and ...

During charging, the charger needs to provide enough current multiplied by the charging time to meet the total capacity of the battery. For example, a 2500mAh battery, if ...



A Guide to Understanding Battery Specifications

Terminal voltage varies with SOC and discharge/charge current. Open-circuit voltage (V) - The voltage between the battery terminals with no load applied. The open-circuit voltage depends ...





5.12kWh Base Station Battery 51.2V 100Ah LiFePO4 ...

Feautres: Connected with up to 10 batteries in Parallel (Max. 51.2KW) No memory effect batteries Low temperature charging cut-off protection. ...



How to fix dead battery on Arctis Nova Pro Wireless

After that I realized that the battery was not charging because it didn't have enough charge in it for the base station to even recognize and charge the battery. Just like in the cars I needed to ...

Plug-in Electric Vehicle Charging: The Details , US EPA

Is my PEV-charging experience similar to filling up my car at a gas station? In some ways, yes: Like a hose to a gas pump, charging a PEV is plugging an electric cord into ...



What is a base station energy storage battery?

A base station energy storage battery is a crucial component of telecommunication infrastructure, designed to improve the efficiency and ...



Grid-Scale Battery Storage: Frequently Asked Questions

State of charge, expressed as a percentage, represents the battery's present level of charge and ranges from completely discharged to fully charged. The state of charge influences a battery's ...



Learn How to Charge LiFePO4 Battery: A Step-by ...

Regular chargers can charge a LiFePO4 battery, but it's crucial to ensure the charger's voltage and current settings match the battery's ...

Contact Us

For catalog requests, pricing, or partnerships, please visit:
<https://bringmethehorizon.eu>