



SolarMax Pro Energy Storage Systems

What is the actual power of a 5kw inverter





Overview

A 5kW inverter can handle up to 5,000 watts of power, which means it can supply enough electricity to run your house if your peak power demand is less than or equal to 5,000 watts. However, this does not mean that you can use 5,000 watts of power all the time. How does a 5kw solar inverter work?

Solar panels generate DC electricity when exposed to sunlight. The 5kw inverter takes this DC power and converts it into AC power, which is used to power household appliances. The inverter ensures that the electricity is at the correct voltage and frequency for home use.

How many watts can a 5kw inverter handle?

A 5kW inverter can handle up to 5,000 watts of power, which means it can supply enough electricity to run your house if your peak power demand is less than or equal to 5,000 watts. However, this does not mean that you can use 5,000 watts of power all the time.

Can a 5kw solar inverter carry more than 5kW?

When an inverter is advertised as 5kw, typically that refers to its continuous “inverting capability” meaning – to me – that while Eskom power is off, you cannot carry more than 5kw load; or even while power (Eskom) is on, you cannot contribute more than 5kw from your solar array or battery. This is correct.

Can a 5kw inverter run a house?

A 5kW inverter may not be enough to run your house if your peak power demand is higher than 5,000 watts. For example, if you use an electric oven (2,000 watts), a kettle (1,500 watts), and a hairdryer (1,000 watts) at the same time, your peak power demand is 4,500 watts, which leaves only 500 watts for other appliances and devices.

How do I make the most of my 5kW inverter?



Here are some tips to help you make the most of your 5kW inverter's capacity: **Prioritize Essential Devices:** Identify and prioritize essential appliances. Focus on powering critical items first, such as refrigerators, lights, and communication devices. **Understand Power Requirements:** Know the power requirements of your appliances.

What is a 5kw inverter?

A inverter is an electrical device that converts direct current (DC) to alternating current (AC) at a capacity of 5 kilowatts. It's commonly used to transform the DC electricity generated by batteries or solar panels into AC electricity suitable for household appliances. How does a 5kw inverter differ from other inverter capacities?



What is the actual power of a 5kw inverter

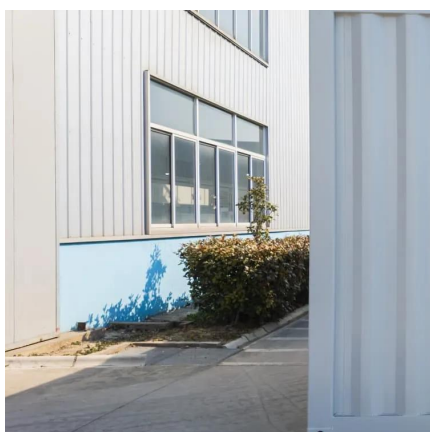


[Solar Inverter Sizing Guide for Maximum Efficiency](#)

For example, a 6.6kW solar array often pairs with a 5kW inverter to balance efficiency, cost, and performance. This article explains how to ...

5kW Off-Grid Solar Inverter

The "5kW" refers to the power output capacity, meaning the inverter can supply up to 5,000 watts of electricity at any given time. What sets an "off-grid" inverter apart is that it ...



How to calculate the size of inverter needed for your ...

WHAT SIZE OF INVERTER DO I NEED FOR MY HOME? A lot of people want a power backup or solar system but don't know how to calculate ...

Why a 5kw Inverter? The Magic Size

When it comes to inverters, efficiency is king. An inverter's efficiency rate tells you how well it converts DC to AC. The higher the rate, the



better. Top Tip: Always aim for an inverter with an ...



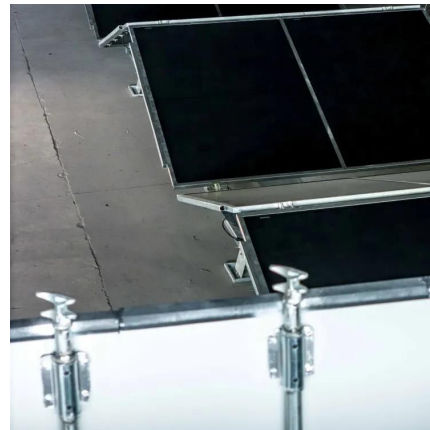
Idle Power Consumption of an Inverter or Uninterruptible Power ...

Explanation of what idle power consumption means for an inverter or UPS, why it is important, and common misconceptions regarding this topic.



Powering Your Dream Home: Can a 5kW Inverter Get the Job ...

A 5kW inverter is designed to convert up to 5,000 watts of DC power into AC power, making it suitable for small to medium-sized homes or systems with lower energy requirements.



[Solar Inverter Sizing to Improve Solar Panel Efficiency](#)

Under-sizing Your Inverter Using the graph above as an example, under-sizing your inverter will mean that the maximum power output of your ...





Why a 5kw Inverter? The Magic Size

When it comes to inverters, efficiency is king. An inverter's efficiency rate tells you how well it converts DC to AC. The higher the rate, the better. Top Tip: Always ...



Understanding Inverter Power Ratings: kW vs kVA ...

kW refers to the real or usable power output of an inverter. kVA represents the total power capacity it can carry, including power lost in phase difference ...

Understanding Inverter Power Ratings: kW vs kVA Explained

kW refers to the real or usable power output of an inverter. kVA represents the total power capacity it can carry, including power lost in phase difference (reactive power). For example, ...



Understanding Battery Capacity and Inverter Compatibility

Inverter Efficiency: Lithium batteries generally work well with modern inverters, but checking the inverter's efficiency rating is advisable. Efficiency impacts the actual power ...



[Inverter Specifications and Data Sheet](#)

The article provides an overview of inverter functions, key specifications, and common features found in inverter systems, along with an example of power ...



What Can a 5kW Inverter Power?

A 5kW inverter can efficiently power a variety of household appliances and electronics, making it an ideal choice for residential solar energy systems. Stay tuned as we ...

[Can a 5kW Inverter Really Power Your Entire House?](#)

A 5kW inverter can handle up to 5,000 watts of power, which means it can supply enough electricity to run your house if your peak power ...





What can a 5kw inverter run?

It is able to convert solar power into usable AC power, allowing you to enjoy uninterrupted power supply even in remote or under-powered areas. With a capacity of 5kw, ...

Really understanding the difference between 5kw and 8kw

When an inverter is advertised as 5kw, typically that refers to its continuous "inverting capability" meaning - to me - that while eskom power is off, you cannot carry more ...



5kW Off-Grid Solar Inverter

What is a 5kW Off-Grid Solar Inverter? Let's start with the basics. A 5kW off-grid solar inverter is a device that converts direct current (DC) from your solar panels into ...

Why is my inverter only 5kW but my panels are 6.6kW?

A 5kW inverter that is converting 5kW of DC solar panel power to (nearly) 5kW of AC power for use in the home or the electricity grid is operating at peak performance. But in ...

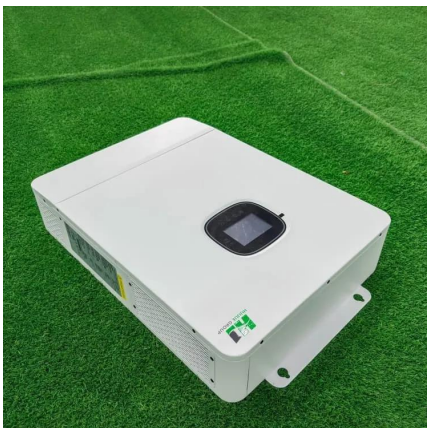
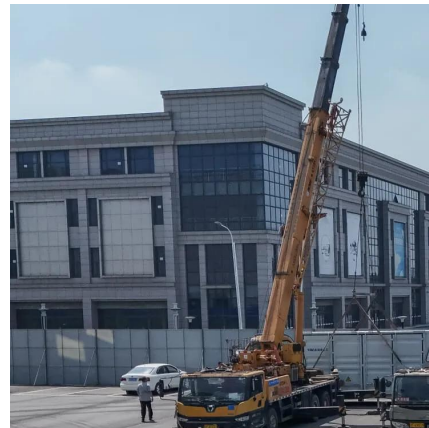


[How to read inverter data sheet in 5 easy steps-InkPV](#)

Off-grid inverter is to put DC current from battery to AC current supply to home appliances. Battery are DC current, which is charge by sun or by grid via an inverter. Contact us to download the ...

[Can a 5kW Inverter Really Power Your Entire House?](#)

A 5kW inverter can handle up to 5,000 watts of power, which means it can supply enough electricity to run your house if your peak power demand is less than or equal to 5,000 ...



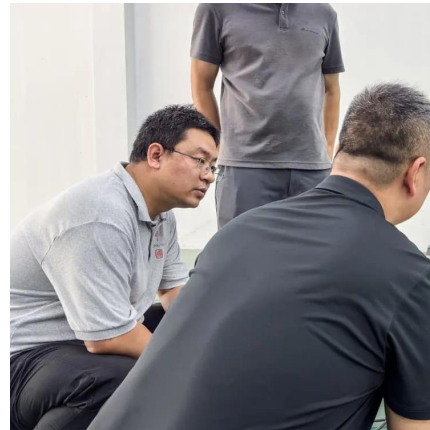
[5kW Solar System: Costs, Outputs & Returns , Solar ...](#)

5 kilowatt (5kW) solar systems have become one of the most popular sizes in Australia. This due to the combination of high energy yields ...



Inverter Efficiency: Complete Guide and Calculator

Inverter efficiency can be a real head-scratcher... You think you think you've finally worked out the best size inverter to run your appliances and then ...



Really understanding the difference between 5kw and 8kw

When an inverter is advertised as 5kw, typically that refers to its continuous "inverting capability" meaning - to me - that while eskom power is off, you cannot carry more ...

Inverter Sizing for 5 kW Solar: Why You Don't Need a 5 kW Inverter!

Confused about inverter sizing for your 5 kW solar system? Discover why a smaller 4.4 kW inverter may be the smarter choice for Indian homes.



Contact Us

For catalog requests, pricing, or partnerships, please visit:
<https://bringmethehorizon.eu>