



SolarMax Pro Energy Storage Systems

What are the dimensions of a set of 26 photovoltaic panels





Overview

When considering the modular composition, one must recognize the common dimensions of these panels, which generally range from 65 inches by 39 inches, depending on the manufacturer and design specifications. What are the different sizes of solar panels?

There are 3 standardized sizes of solar panels, namely: 60-cell solar panels size. The dimensions of 60-cell solar panels are as follows: 66 inches long, and 39 inches wide. That's basically a 66×39 solar panel. But what is the wattage?

That is unfortunately not listed at all. 72-cell solar panel size.

Which solar panel size is suitable for homes?

Homes usually pick 60-cell panels for roofs when choosing the right solar panel. Businesses might choose 72-cell panels for more energy. The effectiveness of solar energy systems varies based on size and specs.

What is the typical size of commercial solar panels?

Commercial solar panels are usually bigger, with 72 cells. They measure about 80 inches by 40 inches. The size and layout of a solar panel impact its power output. Bigger panels can generate more energy.

How does solar panel size affect a home?

Solar panel size directly affects: Choosing the right dimensions ensures that your system fits your space while generating enough electricity to meet your needs. Let's explore the most common solar panel size dimensions available today: 1. Residential Solar Panels These are the most popular panels for homes. 2. Commercial Solar Panels.

How big are residential solar panels?

Most residential solar panels are 1.7m tall x 1.0m wide (or 1.7 m²), with a maximum power output of around 330W. Solar panels also come with 72 solar



cells, which are larger to accommodate the additional cells. They are around 30% larger than residential solar panels, measuring approximately 2.1m tall x 1.1m wide (or 2.3 m²).

What are the dimensions of a 60-cell solar panel?

The size of solar panels varies by type. 60-cell panels are about 65 inches by 39 inches. Here's a breakdown of typical sizes: - 60-cell: 65" x 39" - 72-cell: 80" x 40" - 96-cell: varied dimensions.



What are the dimensions of a set of 26 photovoltaic panels



Solar Panel Sizes & Dimensions

Solar Panel Sizes & Dimensions ESE Solar are passionate about the environment and the latest renewable, green, technologies. Solar Maintenance, Solar PV,

[26 photovoltaic panels size specification table](#)

Standard residential solar panels contain 60 solar cells (or 120 half-cut solar cells) and typically generate anywhere from 350W to 500W of electricity. The size of these panels can range from ...



Understanding Solar Panel Dimensions In 2025: A Complete Size ...

Explore the most common solar panel dimensions in 2025, including residential and commercial sizes. Learn how solar panel size dimensions affect power, installation, and ...

[A Comprehensive Solar Panel Size Chart: Find the ...](#)

Digging into solar PV systems shows the popularity of the 6.6 kW size for homes. Usually,



Australian homes use between 11-23 kWh of energy ...

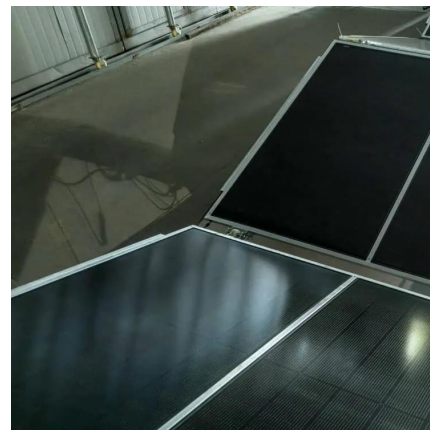


[Detailed Guide to Solar Panel Size & Dimensions](#)

Looking to install solar panels? Learn about solar panel dimensions, wattage, cell types, and how to calculate the system size for your ...

[Solar Panel Size Chart - SizeChartly](#)

Carefully weighing these factors will help you choose the right solar panel size, optimizing both performance and practicality for your solar energy system. FAQs 1. What is the best solar ...



[Standard Solar Panel Sizes And Wattages \(100W ...](#)

These are the practical solar panel dimensions by wattage from solar panels that are actually sold on the market (made by SunPower, Panasonic, QCells, REC ...



[What does a 26-piece solar panel look like? , NenPower](#)

What does a 26-piece solar panel look like? A 26-piece solar panel setup consists of 26 individual solar photovoltaic modules, structured in a specific layout, and often mounted ...



[Detailed Guide to Solar Panel Size & Dimensions](#)

Looking to install solar panels? Learn about solar panel dimensions, wattage, cell types, and how to calculate the system size for your home's energy needs.

26 Photovoltaic Panel Dimensions Optimizing Solar System Design

When designing solar systems, understanding photovoltaic panel dimensions is like solving a puzzle - every centimeter counts. Whether you're planning a rooftop array or a ground ...



Size of Solar Panels Explained: Residential and Commercial ...

The selection of solar panels should be the right fit between your space, weight, and solar power energy requirements. Standard Sizes of Solar Panels: Residential vs. ...



[Understanding Solar Panel Size for Optimal Solar ...](#)

Learn how solar panel size impacts efficiency and performance. Discover key factors to consider for choosing the optimal size for your solar power solutions.



[A Guide to Photovoltaic PV System Design and ...](#)

How much does a PV system cost? The cost of a PV system varies depending on the size of the system and the specific circumstances of the installation. ...



A Comprehensive Solar Panel Size Chart: Find the Right Fit

Digging into solar PV systems shows the popularity of the 6.6 kW size for homes. Usually, Australian homes use between 11-23 kWh of energy each day. A 6.6 kW system ...





[Solar Panel Sizes, Dimensions & Weight , Solar Choice](#)

Standard residential solar panels contain 60 solar cells (or 120 half-cut solar cells) and typically generate anywhere from 350W to 500W of ...

[Perfect Solar Panel Sizes for Your Home \(Expert ...](#)

Solar panels have become the cornerstone of residential clean energy, with standard sizes designed to balance power output and installation ...



[What Size Are Solar Panels? A Comprehensive Guide ...](#)

These enhancements render photovoltaic systems more reachable and appealing for property owners, highlighting the significance of ...

[Solar Panel Sizes, Dimensions & Weight , Solar Choice](#)

Standard residential solar panels contain 60 solar cells (or 120 half-cut solar cells) and typically generate anywhere from 350W to 500W of electricity. The size of these panels ...



[Solar Panel Size Guide \(with 4 Charts\)](#)

Solar panel sizes are measured in two ways: watt output and physical dimensions. Physical dimensions refer to the height, length and width of the solar array. The wattage refers to how ...



[How to Size a Solar Panel Array For A Solar Power ...](#)

Step 5: Calculate the Number of Panels Needed
Once you've selected a panel size, divide your required array size by the panel wattage to find the quantity. ...



Understanding Photovoltaic Panel Sizes - What You Need to ...

In this detailed guide, we'll explain how solar panel dimensions correlate with wattage, the different size standards, and how to calculate the best fit for your energy goals.





Solar panel sizes and dimensions explained , FMB

Solar panel size captures both a panel's power and its physical dimensions. Find out what size of solar panel system you need with our guide.



Standard Solar Panel Sizes And Wattages (100W-500W Dimensions)

These are the practical solar panel dimensions by wattage from solar panels that are actually sold on the market (made by SunPower, Panasonic, QCells, REC Solar, Renogy, Bluetti, and so on).



Contact Us

For catalog requests, pricing, or partnerships, please visit:
<https://bringmethehorizon.eu>