



SolarMax Pro Energy Storage Systems

What are the communication base stations in New Zealand





Overview

41°34'33.6"S 173°44'20.4"E / 41.576000°S 173.739000°E The Waihopai Station is a secure communication facility, located near Blenheim, run by New Zealand's Government Communications Security Bureau. The station started operating in 1989, and collects data that is then shared with New Zealand's allies. In 2021, it was announced that the parts of the station would be deconstructed. FunctionThe construction of a new station on 30 hectares of stony ground was authorised by the Prime Minister and Finance Minister in 1987. comments that Lange: "was ready to work wit.

The site is a regular target for protesters and activists who are attempting to have the base closed down. The have had regular yearly protests at the base. In 1996 entered the base at nig.

- Hager, Nicky (1996). Secret Power: New Zealand's Role in the International Spy Network. Nelson, NZ: Craig Potton Publishing.

Where can I find a story of a New Zealand radio station?

Welcome to maritimeradio.org, where you'll find the stories of New Zealand radio communication stations that were originally operated by the Post & Telegraph Department, and later by the New Zealand Post Office and finally by the privatised company Telecom.

What is Waihopai station?

The Waihopai Station is a secure communication facility, located near Blenheim, run by New Zealand 's Government Communications Security Bureau. The station started operating in 1989, and collects data that is then shared with New Zealand's allies.

How did point-to-point communications work in New Zealand?

These stations provided not just communications with ships but also point-to-point services internationally and to isolated parts of the country. Although several such stations once operated from around New Zealand, all point-to-point services have now been replaced by satellites and undersea cables.



What is Taupo maritime radio ZLM?

A single radio station, Taupo Maritime Radio ZLM, operated by Maritime NZ serves shipping and small craft from the middle of the North Island, although it is controlled from the capital, Wellington.

How did Portishead Radio work?

Portisheadradio was a GPO station with a few RN ops assisting. Most of the others were Naval, such as Simonstown near Capetown. There were a couple of anomalies in Aus and NZ. GPO Wellington/ZLW transmitted the TFC blind to us on HF but wouldn't accept QSLs or TFC. That had to be sent via Naval Irirangi/ZLO or GPO Awarua/ZLB. How did that work?

!



What are the communication base stations in New Zealand



[Breaking Down OSCE Stations: What to Expect and ...](#)

What is an OSCE? OSCE is a practical exam designed to test your clinical skills, communication abilities, and decision-making in a ...

Communication in New Zealand

How is the communication system in New Zealand? Here, Broadcast media include state-owned Television New Zealand operates multiple TV networks; state-owned Radio New Zealand ...



[Naval Communications Station Irirangi](#)

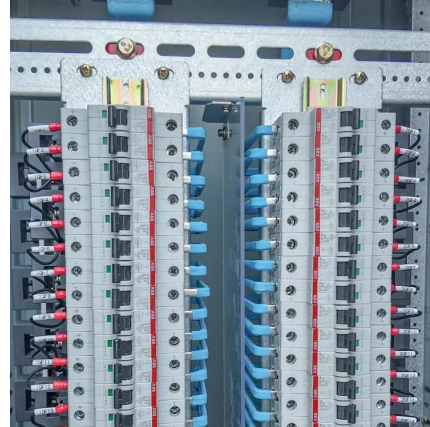
The Government Communications Security Bureau (GCSB) is now responsible for signals intelligence, with a radio communications intercept station at Tangimoana and a satellite ...

Naval communications station at Wai?uru , Intelligence services

These are the buildings of the naval communications station HMNZS Irirangi, located



south of Wai?uru in the central North Island. The small complex of buildings and ...



[Cellsites and 5G - Health New Zealand , Te Whatu Ora](#)

Cellsites are also known as cellphone towers or base stations. Cellsites communicate with nearby cellphones using radio signals. These radio signals are made up of radiofrequency fields.



The Radiocommunications Regulations:

AMATEUR RADIO - The RULES explained
Establishing and Operating an Amateur Radio Station in New Zealand The New Zealand Radiocommunications Regulations and Amateur Radio ...



Tangimoana Station

The Tangimoana Station is a radio communications interception facility run by the New Zealand Government Communications Security Bureau. It is located 30 kilometres west of Palmerston ...





Communication in New Zealand

More about communication in New Zealand All Important Facts about New Zealand Want to know more about New Zealand? Check all different factbooks for New Zealand below.



US Navy Communication Unit

This unit was established to support operations in Antarctica. The transmitter site is next to Weedons RNZAF Base and the receiver site is next to Christchurch International airport.



New Zealand radio communication stations , maritimeradio

Welcome to maritimeradio , where you'll find the stories of New Zealand radio communication stations that were originally operated by the Post & Telegraph Department, and later by the ...



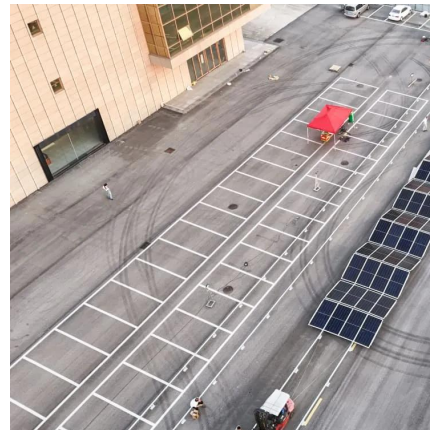
Waihopai Station

The Waihopai Station is a secure communication facility, located near Blenheim, run by New Zealand 's Government Communications Security Bureau. The station started operating in ...



[Cellsites and 5G - Health New Zealand , Te Whatu Ora](#)

Cellsites are also known as cellphone towers or base stations. Cellsites communicate with nearby cellphones using radio signals. These radio signals ...

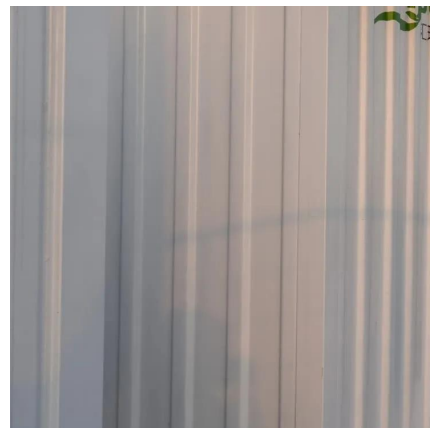


Naval Communications Station Irirangi , Military Wiki , Fandom

The Naval Communications Station Irirangi of the Royal New Zealand Navy, which is 2 km north of Waiouru and near the Waiouru Army Camp, was established in WWII (1943) as the Waiouru ...

[American Radio Stations in New Zealand](#)

Right, and now in Wavescan today, we present additional interesting information about American radio stations in New Zealand, back during that same World War 2 era, and ...





Tait Talks: New Zealand Manufacturing Facility

Today we explore the current state of on-site manufacturing globally in the post-covid-19 industrial era, along with Tait Communications' New Zealand factory where the radios ...

Description of NAVCOMMSTA WAIOURU by Artificial Intelligence

Became one of New Zealand's largest military communication centres. Fully integrated into the ANZUK and later Five Eyes communication system. Provided secure voice, ...



Are there any US military bases in New Zealand?

Does the US have any military bases in Australia? The U.S. Navy has only one base currently in Australia: Naval Communication Station Harold E. Holt in Exmouth, Western Australia. There ...

US Navy Communication Unit

This unit was established to support operations in Antarctica. The transmitter site is next to Weedons RNZAF Base and the receiver site is next to Christchurch ...



[Spaceflight Earth Observation Ground Station in New ...](#)

Spaceflight, a next-generation, integrated space services company wanted to expand its ground station network to New Zealand. Each of the company's ...



[Warkworth Satellite Earth Station , NZ History](#)

Warkworth Satellite Earth Station (1971)
Globalisation, Part 2 New Zealand sent its first phone messages to Britain by satellite in 1965 using INTELSAT-1, but ...



[Starlink Ground Station Locations \(2025\)](#)

Starlink, to deliver internet connectivity to its users, relies on a system of ground stations called gateways. These gateways act as an interlink between the ...





[Documents Shine Light on Shadowy New Zealand ...](#)

The spying station intercepts data from satellites, and is operated by Government Communications Security Bureau, or GCSB, New Zealand's ...



Contact Us

For catalog requests, pricing, or partnerships, please visit:
<https://bringmethehorizon.eu>