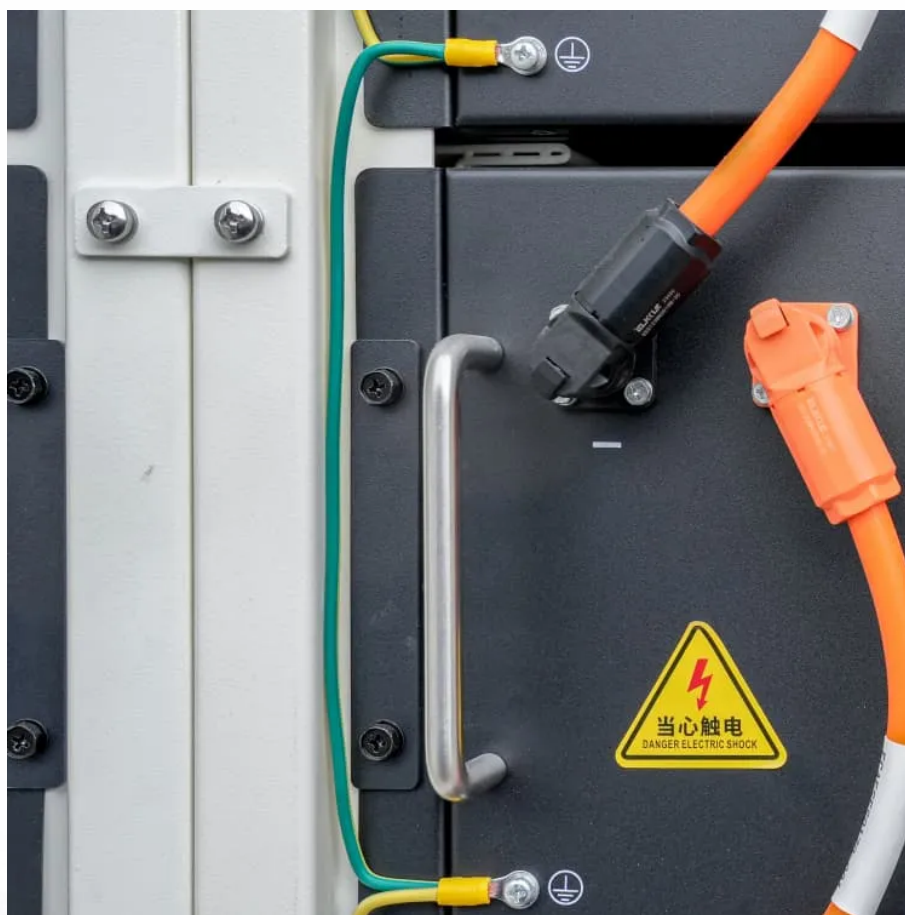




**SolarMax Pro Energy Storage Systems**

## **There is a communication base station EMS outdoors**





## Overview

---

What is an emergency communications station (EmComm)?

Putting together a field, or emergency communications, station (EmComm) is similar to setting up a home station. Both types of stations share many common elements: radios that cover all amateur bands, antenna systems appropriate for those bands with some type of supporting structure, and a source of electricity for power.

What is an em comm station?

The author's station in a typical Em- Comm configuration. A computer and sound interface are needed when using digital modes. Amateur radio operators usually refer to their communications equipment as their "station," whether it is a base station at home, mobile station in a vehicle or portable station when on foot.

What type of station do hams use?

There is one other type of station only a small number of hams really concentrate on: the emergency communications station. Putting together a field, or emergency communications, station (EmComm) is similar to setting up a home station.

What equipment do I need for a field or EMCOM station?

Peripheral equipment, such as antenna tuners (sometimes required to "match" the output of the radio to the impedance of the antenna system), may be necessary in a field or EmComm station but should be kept to a minimum, both in size and number, while still maintaining the station's capabilities.

What is a ham radio station?

Amateur radio operators usually refer to their communications equipment as their "station," whether it is a base station at home, mobile station in a vehicle



or portable station when on foot. There is one other type of station only a small number of hams really concentrate on: the emergency communications station.

What is a base station?

A base station is a radio operated from a fixed site such as a dispatch center, hospital, or some other location. It usually runs off community electrical power and transmits at much higher power than smaller, portable radios. Alternative power in the form of generators or a set of batteries are usually available.



## There is a communication base station EMS outdoors

---

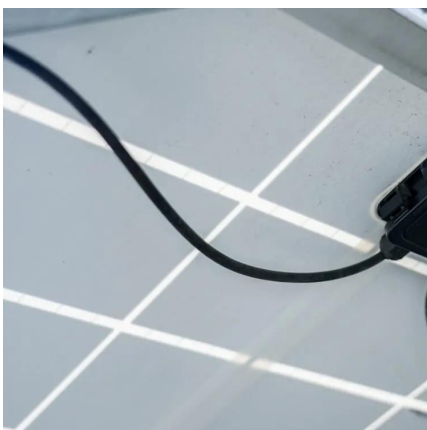


### EMS Base Stations

Base Stations Maryland's designated EMS Base Stations provide quality on-line medical direction to the State's EMS clinicians. The following information comprises a toolbox for EMS Base ...

### EMT Chapter 5 Flashcards , Quizlet

Explain legal considerations that apply to EMS communications. The FCC has jurisdiction over all radio operations nationally, including those in EMS systems. They license base stations, ...



### [Designing Fire And EMS Stations: A Comprehensive Guide](#)

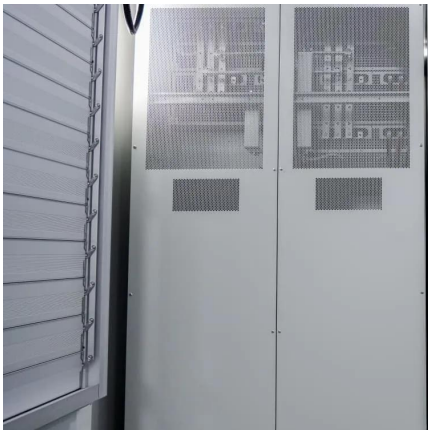
Fire and EMS stations also contribute to infectious disease risks. Due to the nature of their work, fire and EMS personnel are at an increased risk of exposure to bloodborne and airborne ...

### [Communications and Dispatching , Cooney's EMS Medicine](#)

Describe common terms used in radio communication to communicate the status of a



unit. Describe an emergency department base station and list types of individuals who may be ...



### [EMR Chapter 4 Questions Flashcards , Quizlet](#)

Study with Quizlet and memorize flashcards containing terms like The purpose of a communications system is to:, Which of the following statements regarding a base station is ...

## **Mastering EMS Communication: The Essential Role of Base Station ...**

Understanding the vital requirements for EMS communication, particularly the significance of a base station's height, is crucial for anyone preparing for the North Carolina EMT State Exam. ...



### [Comms on the Go: Emergency Field Communications](#)

A complete station, ready for EmComm or field communications. The station has proven to provide local, regional, national and global communications capabilities.

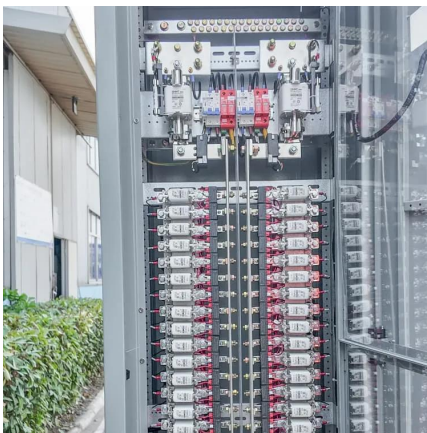






## EMT

Study with Quizlet and memorize flashcards containing terms like which communication device has an output of 20-50 Watts and a range of 10-15 miles, a radio that is located at a stationary ...



## [EMS System Communications - georgiaemsacademy](#)

The mobile radio is a vehicle mounted device that is designed to transmit with lower power (typically 20 to 50 watts) than the base station radio (due to the 12 volt radio system in ...

## [Chapter 17 True/False Flashcards, Quizlet](#)

Study with Quizlet and memorize flashcards containing terms like Question 1 Wireless communications include radios and cellular telephones. Select one: True False, Question 2 ...



## [Chapter 5: Communication Flashcards, Quizlet](#)

Study with Quizlet and memorize flashcards containing terms like base station, Where should base stations be located?, What are components of an Emergency ...



## General Order Section 01

A "notification" is made when any member of the EMS Unit crew conveys patient transport information only to the receiving facility. All patient transports, regardless of patient priority, ...



## Communication Flashcards , Quizlet

Study with Quizlet and memorize flashcards containing terms like Which of the following is NOT a function of the Federal Communications Commission (FCC)? A) maintaining communications ...

## Mastering EMS Communication: The Essential Role of Base ...

Understanding the vital requirements for EMS communication, particularly the significance of a base station's height, is crucial for anyone preparing for the North Carolina EMT State Exam. ...





## Communication Base Station

The design and implementation of Tian-Power's communication backup solution aims to ensure the normal operation of the communication system in the event of a power outage or power ...

## Chapter 15: Communication and Documentation

B. pertinent negatives. C. errors of omission. D. breaches of confidentiality., Discussions between an EMT and a patient are known as: A. the verbal report. B. interpersonal communication. C. ...



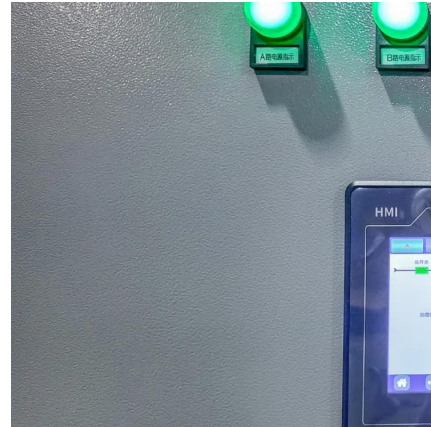
## EMSCOM

Provide a base station communications back-up for dispatching, direct phone line patching and coordinating EMS information in cases where local base station control fails or is not available.

## Comms on the Go: Emergency Field Communications

Fire and EMS stations also contribute to infectious disease risks. Due to the nature of their work, fire and EMS personnel are at an increased risk of exposure to bloodborne and airborne ...





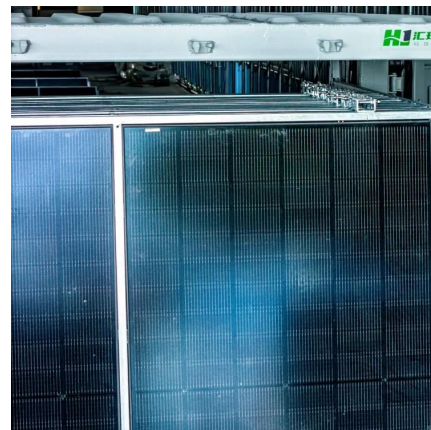
### Communications-EMT -- Hopper Institute®

A base station is a radio operated from a fixed site such as a dispatch center, hospital, or some other location. It usually runs off community electrical power and transmits at much higher ...



### **(2022) EMR Chapter 5**

emergency situation. A. A base station is used by dispatchers to send and receive messages to and from all parts of the service area. Upon arriving at the scene of a major motor vehicle ...



### **Chpt. 4 Flashcards , Quizlet**

The role of dispatch in an EMS communications system is to obtain info about the nature of the emergency, direct the appropriate emergency services to the scene and





## EMT chapter 5 Flashcards , Quizlet

Study with Quizlet and memorize flashcards containing terms like T/F: a base station is a fix to a EMS vehicle, T/F: Wireless communications include radios and cellular telephones, T/F: the ...



## Contact Us

---

For catalog requests, pricing, or partnerships, please visit:  
<https://bringmethehorizon.eu>