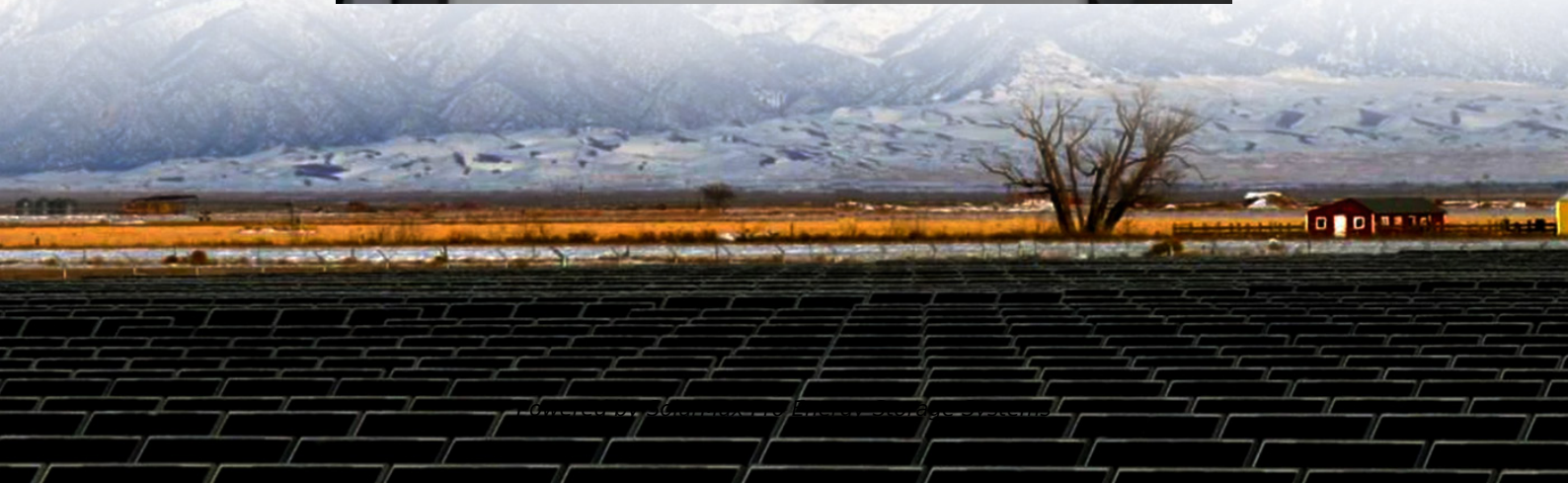
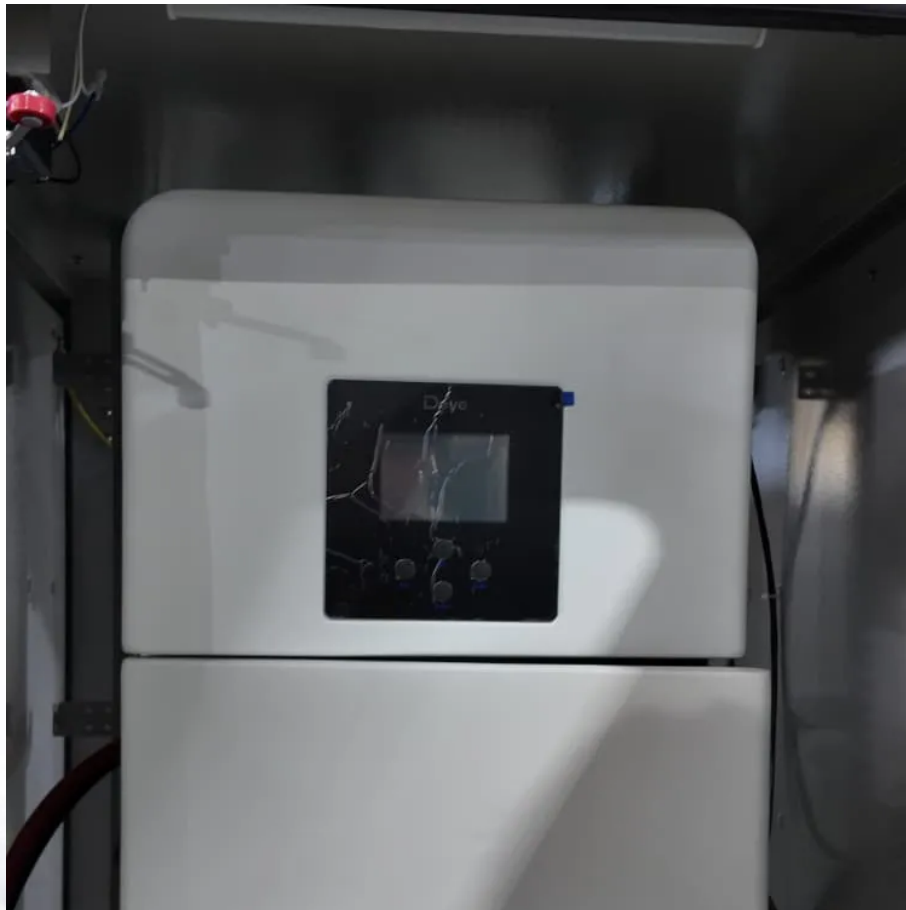




**SolarMax Pro Energy Storage Systems**

# **The latest standard size of photovoltaic panel single glass specifications**





## Overview

---

Available in range a transparencies, opaque to 80% light transmission. Standard panel dimension 1200mm x 600mm x 7.1mm, but available in any bespoke shape and size up to 3m. Full range of colour laminates or coatings available on request. Efficiency from 12% or 118Wp/m<sup>2</sup>. What are the different sizes of solar panels?

There are 3 standardized sizes of solar panels, namely: 60-cell solar panels size. The dimensions of 60-cell solar panels are as follows: 66 inches long, and 39 inches wide. That's basically a 66x39 solar panel. But what is the wattage?

That is unfortunately not listed at all. 72-cell solar panel size.

What are the key specifications of solar panels?

The article covers the key specifications of solar panels, including power output, efficiency, voltage, current, and temperature coefficient, as presented in solar panel datasheets, and explains how these factors influence their performance and suitability for various applications.

What is a large size solar panel?

**Large-Size Solar Panels:** On the other end of the spectrum, typical large solar panels measure approximately 200 x 110 cm. These dimensions are used when space is not a significant constraint. Larger panels help optimize the overall system cost by reducing the need for mounting supports and cabling.

How many solar panels can you put on a roof?

There is no standardized chart that will tell you, for example, "A typical 300-watt solar panel is this long and this wide." If you want to calculate how many solar panels you can put on your roof, you will obviously need to know the size of a solar panel. Example: 5kW solar system is comprised of 50 100-watt solar panels.

How many Watts Does a solar panel produce per square foot?



Dividing the specified wattage by the square footage of the solar panel will give us just this result: The average solar panel output per area is 17.25 watts per square foot. Let's say that you have 500 square feet of roof available for solar panel installation.

How big is a 60-cell solar panel?

Nowadays, a typical 60-cell panel for homes is about 65-by-39 inches. It's designed to fit roofs nicely, mixing function with style. Knowing the size and weight of solar panels is crucial. Home panels are about 17.62 square feet and weigh 40 pounds. But, commercial panels are bigger, covering 21.13 square feet and weighing 50 pounds.



## The latest standard size of photovoltaic panel single glass specifica

---



### Solar Panel Products

Data Sheets for the Polycrystalline and Monocrystalline Glass/Glass Panel Range offered by Solar Electric UK. Technical specifications for both the Monocrystalline & Polycrystalline range ...

### [Glass & Glazing Codes and Standards for Architects](#)

National Glass Association NGA is a not-for-profit trade association, and the only national trade association serving the entire glass and glazing industry.



### Standard Sizes of Solar Panels: Choosing the Right One for Your ...

Explore the standard sizes of solar panels to find the perfect fit for your energy needs. Learn more about the size of one solar panel and options available.



### [PV module specifications and performance parameters](#)

The nameplate ratings on photovoltaic (PV) panels and modules summarize safety,



performance, and durability specifications.  
Safety ...

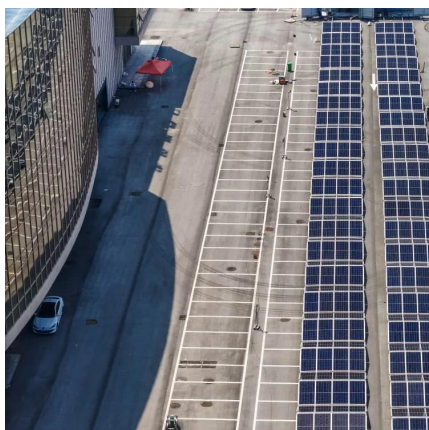


### Solar Panel Dimensions: What You Need to Know ...

Discover the ideal solar panel sizes for your installation. Learn about common dimensions, types of panels, and space requirements for ...

### Photovoltaic panel size specifications thickness

Photovoltaic panel size specifications thickness  
60-Cell Solar Panels. The typical size of a solar panel, such as the 60-cell variant, is designed in a 6x #215;10 configuration and has ...



### Solar Photovoltaic Glass Panel Specifications

The Federal Energy Management Program (FEMP) provides this tool to federal agencies seeking to procure solar photovoltaic (PV) systems with a customizable set of technical specifications.





## [Solar Panel Dimensions: What You Need to Know Before ...](#)

Discover the ideal solar panel sizes for your installation. Learn about common dimensions, types of panels, and space requirements for residential and commercial solar ...

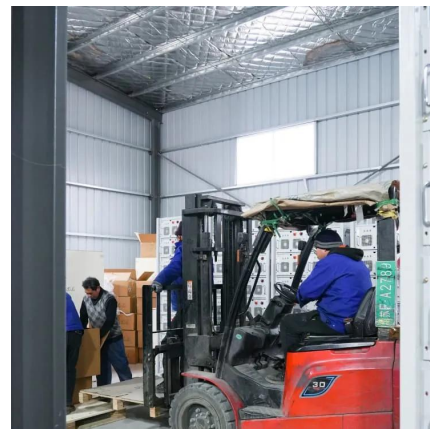


## [How To Read A Solar Panel Spec Sheet: A Complete Guide](#)

Learn how to read a solar panel spec sheet to compare manufacturers, calculate efficiency, and determine the best panels for your project.

## **Standard Solar Panel Sizes And Wattages (100W-500W Dimensions)**

The goal here is to get to the average solar panel size by wattage. You can find typical dimensions of 100W, 150W, 170W, 200W, 200W, 220W, 300W, 350W, 400W, and 500W solar ...



## **Photovoltaic (PV) Panel Technical Specifications , The Sun Pays**

Photovoltaic (PV) Panel Technical Specifications  
Photovoltaic (PV) panels are the core of any solar power system. Understanding key specifications will help you compare quality, ...



## Commercial Solar Panel Sizes: An In-Depth Guide to Picking the ...

Discover your perfect fit with our in-depth guide on commercial solar panel sizes. Make informed decisions for your business's eco-friendly shift.

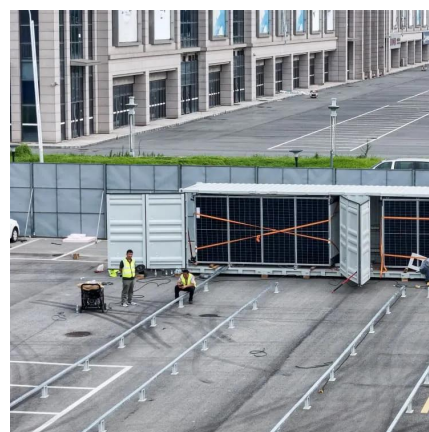


### [Product Specifications and Datasheets](#)

Standard panel dimension 1200mm x 600mm x 7.1mm, but available in any bespoke shape and size up to 3m. Full range of colour laminates or coatings available on request.

### [Standard Sizes of Solar Panels: Choosing the Right ...](#)

Explore the standard sizes of solar panels to find the perfect fit for your energy needs. Learn more about the size of one solar panel and options ...



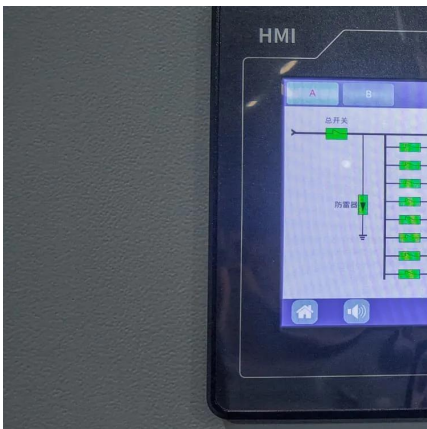


### [Photovoltaic panel glass technical parameters](#)

The most important solar panel specifications include the short-circuit current, the open-circuit voltage, the output voltage, current, and rated power at 1,000 W/m<sup>2</sup> solar radiation, all

### [How To Read A Solar Panel Spec Sheet: A Complete ...](#)

Learn how to read a solar panel spec sheet to compare manufacturers, calculate efficiency, and determine the best panels for your ...



### [Solar Panel Sizes \(Energy Use & Dimensions Guide\)](#)

Solar panel sizes guide with residential & commercial solar panel dimensions, different types & how many solar panels you need for your home.

### [Solar Panel Datasheet Specifications Explained](#)

The article covers the key specifications of solar panels, including power output, efficiency, voltage, current, and temperature coefficient, as presented in solar ...





### [Standard Solar Panel Sizes And Wattages \(100W ...](#)

The goal here is to get to the average solar panel size by wattage. You can find typical dimensions of 100W, 150W, 170W, 200W, 200W, 220W, 300W, 350W, ...



### [Solar Panel Datasheet Specifications Explained](#)

The article covers the key specifications of solar panels, including power output, efficiency, voltage, current, and temperature coefficient, as presented in solar panel datasheets, and ...



### [Canadian Solar TOPCon Module Technical White Paper](#)

Since 2019, CSI Solar has been developing N-type TOPCon (Tunnel Oxide Passivated Contacts) technologies, and now launches a diversified TOPCon module portfolio covering both 182mm ...





## Contact Us

---

For catalog requests, pricing, or partnerships, please visit:  
<https://bringmethehorizon.eu>