



SolarMax Pro Energy Storage Systems

The latest and largest photovoltaic panel size





Overview

What are the different sizes of solar panels?

There are 3 standardized sizes of solar panels, namely: 60-cell solar panels size. The dimensions of 60-cell solar panels are as follows: 66 inches long, and 39 inches wide. That's basically a 66×39 solar panel. But what is the wattage?

That is unfortunately not listed at all. 72-cell solar panel size.

What is a large size solar panel?

Large-Size Solar Panels: On the other end of the spectrum, typical large solar panels measure approximately 200 x 110 cm. These dimensions are used when space is not a significant constraint. Larger panels help optimize the overall system cost by reducing the need for mounting supports and cabling.

Are all solar panels the same size?

If solar panels contain different numbers of solar cells, then they aren't all the same size. As a general rule, the more solar cells a solar panel has, the bigger the size. Sixty-cell panels are usually smaller than seventy-two-cell solar panels. But things get a bit more complicated when we look at the efficiency of solar cells.

How does solar panel size affect a home?

Solar panel size directly affects: Choosing the right dimensions ensures that your system fits your space while generating enough electricity to meet your needs. Let's explore the most common solar panel size dimensions available today: 1. Residential Solar Panels These are the most popular panels for homes. 2. Commercial Solar Panels.

What are the dimensions of portable solar panels?

Note: Portable solar panels may have flexible designs with different dimensions. Physical Size: 165-200 cm long, 99-102 cm wide (typical range)



Best Applications: Note: Dimensions vary by manufacturer. Consult specific product specifications for exact measurements. Physical Size: 200-213 cm long, 99-109 cm wide (typical range) Best Applications:.

How do I choose the best solar panel size?

Choosing the best solar panel size depends on your roof's specific characteristics. Here's a quick guide to help you decide: Small Roofs: For smaller roofs, 60-cell panels are usually the best option. They offer a good balance of size and power output without overwhelming your roof.



The latest and largest photovoltaic panel size



Solar Panel Size Guide: Which Size Of Solar Panel Is Best?

As a general rule, the more solar cells a solar panel has, the bigger the size. Sixty-cell panels are usually smaller than seventy-two-cell solar panels. But things get a bit more ...

Solar Panel Sizes: Choosing the Right Dimensions for Any Project

Our guide helps you pick the perfect solar panel size for any project: residential, commercial, or industrial. No more guesswork, just maximum savings.



[Solar Panel Dimensions: What You Need to Know Before ...](#)

Large-Size Solar Panels: On the other end of the spectrum, typical large solar panels measure approximately 200 x 110 cm. These dimensions are used when space is not a ...

[Standard Solar Panel Sizes And Wattages \(100W ...](#)

To bridge that gap of very useful knowledge needed, we have compared and averaged the



sizes of 100-watt to 500-watt solar panels available on the ...

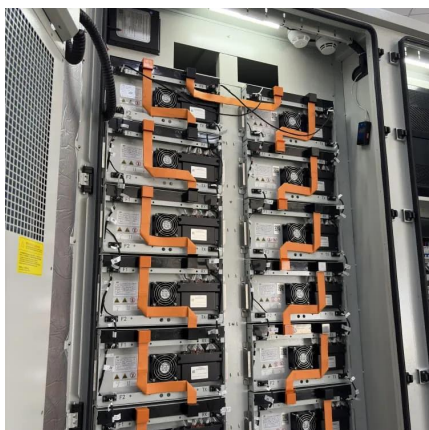


[How Big is a Solar Panel? The Solar Panel Size Guide](#)

A 300W solar panel is the typical size for a residential solar panel, and these solar panels usually have 60 solar cells. Commercial solar panels or other large-scale projects most commonly ...

[3 Best Solar Panel Sizes Based on Your Roof \(2024\)](#)

60-cell panels are the most popular choice for residential installations, striking an ideal balance between size and power output. Measuring approximately 65 inches by 39 ...



[Solar Panels Size & Weight \(Including Commercial ...](#)

Check out this full guide on solar panels size, weight, and other characteristics, including a comparison between Residential and Commercial ...



Solar Panel Dimensions: What You Need to Know ...

Large-Size Solar Panels: On the other end of the spectrum, typical large solar panels measure approximately 200 x 110 cm. These dimensions ...



Solar Panel Sizes: Choosing the Right Dimensions for ...

Our guide helps you pick the perfect solar panel size for any project: residential, commercial, or industrial. No more guesswork, just ...

Solar panel size range: From tiny to large

The size of a commercial solar panel depends on its wattage and number of cells -- these are 72/144-cell panels and larger. For instance, 144-cell 500W panels are about 40 x ...



Solar Cells: Size, Process and Technology Explained

Solar Cells: Size The core of photovoltaic solar panels solar cells, divided into monocrystalline solar cells and polycrystalline solar cells, because of ...



[JinkoSolar launches 670 W TOPCon solar module with 24.8](#)

6 days ago· The manufacturer labeled the new product as the "world's most powerful solar panel" by virtue of 650-670 W front side power and an 85% bifaciality factor that reportedly translates ...



[Solar Panel Size & Weight Guide \[+ Charts\] - Solartap](#)

In this guide, we'll unpack solar panel size in greater detail, helping you determine how large of a system your property can accommodate before ...

RE+: Ten cutting-edge technologies from North America's largest ...

3 days ago· New solar panels, battery energy storage systems, factory announcements and more are set to be unveiled at RE+ Las Vegas, Nevada, Sep 8-11.





List of photovoltaic power stations

The following is a list of photovoltaic power stations that are larger than 500 megawatts (MW) in current net capacity. [1] Most are individual photovoltaic ...

[Are 500-Watt Solar Panels The Best Option?](#)

500-watt solar panels are bigger than your average solar panel. Typically made up of 144 half-cut monocrystalline cells, their large size makes 500-watt solar panels more commonly seen in ...



[Solar Panel Size Guide: Which Size Of Solar Panel Is ...](#)

As a general rule, the more solar cells a solar panel has, the bigger the size. Sixty-cell panels are usually smaller than seventy-two-cell ...

[What is the maximum size of a solar panel? , NenPower](#)

The largest solar panel sizes produced today can exceed dimensions of 8 feet by 4 feet, specifically designed for utility-scale applications or specialized uses, accommodating the ...



Solar panel size range: From tiny to large

The size of a commercial solar panel depends on its wattage and number of cells -- these are 72/144-cell panels and larger. For instance, 144 ...



Solar panel size: choosing the right dimensions

Solar panel size affects energy production and installation space. Explore standard sizes and find the perfect fit for your solar project.



Standard Solar Panel Sizes And Wattages (100W-500W ...

To bridge that gap of very useful knowledge needed, we have compared and averaged the sizes of 100-watt to 500-watt solar panels available on the market. The goal here is to get to the ...





Understanding Solar Panel Dimensions In 2025: A Complete Size ...

Explore the most common solar panel dimensions in 2025, including residential and commercial sizes. Learn how solar panel size dimensions affect power, installation, and ...



Contact Us

For catalog requests, pricing, or partnerships, please visit:
<https://bringmethehorizon.eu>