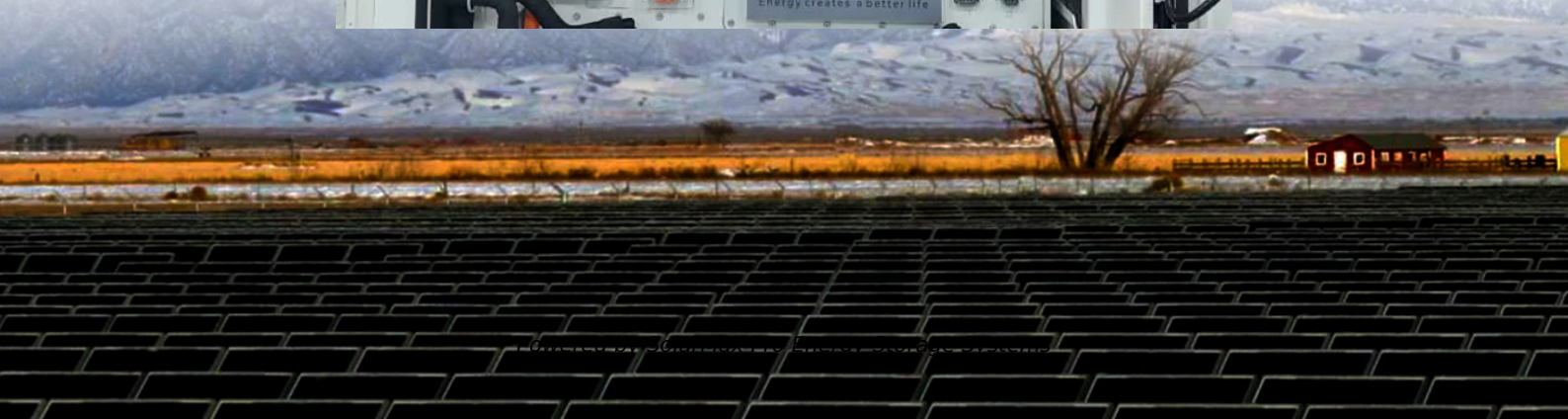




**SolarMax Pro Energy Storage Systems**

# **The discharge current of the communication high-voltage battery cabinet exceeds the limit**





## Overview

---

What happens if you run a battery over a maximum discharge rate?

A high discharge event caused during short a short circuit could cause the voltage to dip to unsustaiable levels. Running a battery over the specified maximum discharge rate could damage the battery and should be avoided in most applications. Figure 4.

What determines the discharge capacity of a battery?

The size of the cells determines the discharge capacity (current capacity) of the entire battery. Each cell has its own vent cap designed to relieve excess pressure and allow gases to escape. It also keeps the dust and dirt out of cells and contains electrolyte solution inside the battery cell.

What happens if you overestimate battery charging capacity?

If you over-estimate the required charging capacity, the charger may deliver too much current. Excessive charging current can cause battery overheating, accelerated water loss in flooded type batteries, and damaged batteries. Many battery manufacturers recommend a maximum charging rate of 20% of the amp hour capacity of the battery.

What is the maximum hydrogen concentration in a battery room?

To ensure safety, most regulations such as the Uniform Fire Code and the International Fire Code stipulate a maximum hydrogen concentration below the level of 1% or 25% of the lower explosion limit in a battery room.  $H =$  Hydrogen generated, in cubic feet per hour (ft<sup>3</sup>/hr).

When does a current limited load switch start limiting current?

A current limited load switch would start limiting current as soon as the system current exceeds the set limit. Some load switch families like the TPS2294x devices offer various current limits, response delay times and auto-restart features. The TPS22948 offers a current limit specified for HDMI output



port applications.

What is the difference between battery voltage and shut-down voltage?

When the current being drawn is high, the shut-down voltage might be 10V, for example; whereas if the current being drawn is a small one, the shut-down might be 11.5V. This compensates for the internal resistance in the battery, and makes Battery Voltage a much more reliable parameter to indicate whether a battery is becoming critically discharged.



## The discharge current of the communication high-voltage battery ca

---



### Operations Manual ZincFive BC Series UPS Battery Cabinets

ZincFive BC Series UPS Battery Cabinet  
Introduction The ZincFive BC Series UPS Battery Cabinet is comprised of ZincFive's Nickel-Zinc Batteries integrated into a battery cabinet with ...

### Current Limit and Short Circuit Protection in Power ...

A major concern in battery applications is the minimum allowed discharge voltage of a battery. If the battery is drained under this specified voltage, it can lead to permanent damage.



### What is Vaginal Discharge? Causes and When to Worry

Vaginal discharge is a natural fluid released by the cervix that helps clean and protect the vaginal area. It's normal for discharge to vary in color and texture depending on the ...

### High discharge current alarm

When I have situations of big demand of power (around 5-7kW), I receive high discharge current alarms from the Victron system. Sometimes the





received alarms report ...



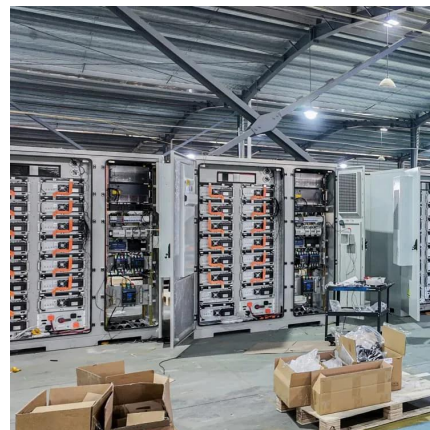
## Maximum Continuous Discharge Current and Cut-off Voltage

The maximum continuous discharge current of a battery refers to the highest amount of current it can consistently deliver without degrading its performance or risking damage.



## Battery Room Ventilation and Safety

To prevent the failure and the battery dry out, the safety valves open and the battery vents hydrogen until temperature and/or voltage are reduced. This condition can be triggered by ...



## What Is a Healthy Vaginal Discharge?

Discharge is made up of fluids produced by glands inside the vagina and cervix. These fluids help to remove dead cells and bacteria, keeping the vagina free of infection and ...





## Current Limit Status

CCL Reduced Due To Charger Latch (Bit #14):  
This means the CCL is likely 0A because the charger has been turned off. This latch is removed when the Charge Power signal is removed ...

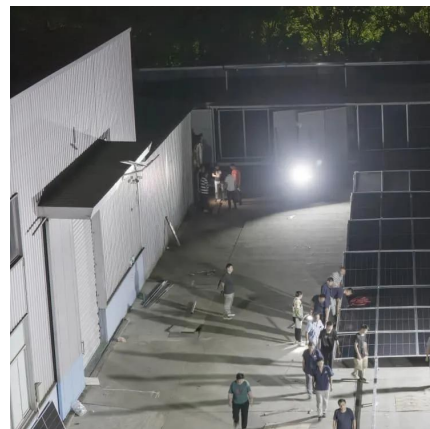


## Mind that BMS: Charging & Discharging limits

So, don't think that, just because you have a BMS on your large battery pack, you're all set. You still have to do one more thing: you have to give the BMS a way to limit charging and ...

## Discharge current limit (DCL) is being ignored.

For a three-phase system, we use three Multi RS Solar inverters. A BMS control system is used for the battery, which includes a DCL. However, ...



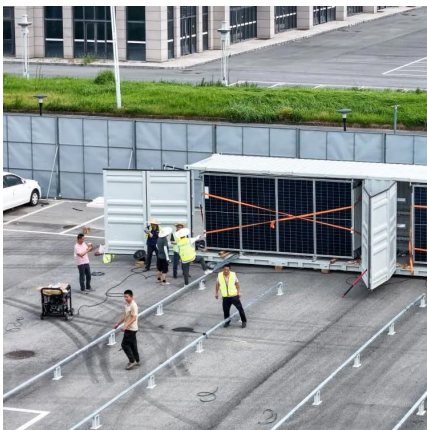
## Vaginal Discharge: What It Means and How Much Is Normal

Vaginal discharge is usually white or clear, watery or thick, and mucus-like. It likely doesn't have a noticeable smell. Your discharge typically changes throughout your menstrual ...



### Vaginal Discharge Color: What's Normal and What Isn't

What do different colors of discharge mean? Dr. Goje explains some of the possible colors of your vaginal discharge and what they may be trying to tell you about your health.



### Vaginal Discharge: Causes, Treatments, and Colors

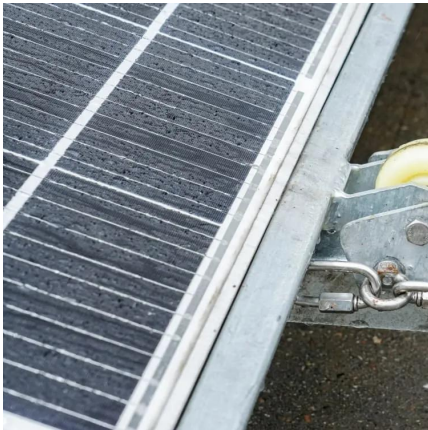
Vaginal discharge naturally occurs throughout your menstrual cycle. Some changes in discharge can occur due to certain medical conditions, including yeast infections. A fluid that ...

### **DISCHARGE Definition & Meaning**

: discharge of an employee for illegal reasons or for reasons that are contrary to public policy (as in retaliation for the employee's refusal to engage in unlawful activity)







### ENS-800100D Battery Discharge Cabinet

...

ENS-800100D Battery Discharge Cabinet, namely Wide-range Voltage Battery Discharge Tester (Dual Channel) actually discharges the battery pack through ...

### Dyness B3 modules: high charge/discharge current

What you would need to investigate imusing the vrm is if there really is a high charge and discharge current there. Is the charge going above ...



## **6. Controlling depth of discharge**

If the battery reaches 95% on any day, the dynamic discharge limit is lowered by 5%. The result is that the battery reaches a healthy charge of between 85% and 100% SoC every day.

### 5 Types of Vaginal Discharge and What They Mean

Vaginal discharge raises common questions for women, including what's normal and what's not. Learn in-depth about female vaginal discharge, from healthy discharge colors, to what ...





### Understanding the Risks: Drawing Excessive Current

The heat generated can cause the battery to overheat, potentially leading to thermal runaway--a condition where the temperature rises uncontrollably. Voltage Drop High ...



### BQ24800: About Charge/Discharge current limit

The discharge limit should be set to the largest current that the battery and switching components can support without damage and should be used only as a protection against ...



### BQ24800: About Charge/Discharge current limit

When battery discharge current exceeds the allowed threshold, it indicates that an overload condition has occurred, if REG 0x39 limit is set lower than the allowed threshold, the ...





## Lithium Battery Max Continuous Discharge Rating Explained

Did you know the maximum continuous discharge current is the highest amperage a lithium battery should be operated at perpetually? It may be a new term to hear because it is ...



## Maximum Continuous Discharge Current and Cut-off Voltage

The maximum continuous discharge current of a battery refers to the highest amount of current it can consistently deliver without degrading its performance or risking damage.

## Vaginal Discharge: Symptoms, Causes, and Treatment

Healthy vaginal discharge is normal and natural. This fluid keeps the vagina clean and provides lubrication. Normal discharge is clear, white, off-white, or pale yellow and has a ...



## Battery cabinet discharge current exceeds limit

The discharge current limit (sometimes referred to as DCL for short, or load current limit) represents the maximum amount of current (measured in amps) that can be pulled or drawn ...



## Continuous discharge current of energy storage cabinet battery

What is a Battery C Rating A battery's charge and discharge rates are controlled by battery C Rates. The battery C Rating is the measurement of current in which a battery is charged and ...



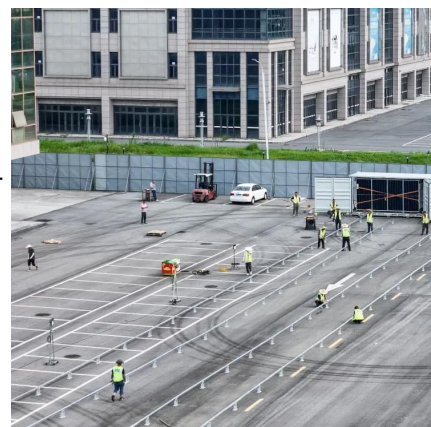
## ZincFive BC Series UPS Battery Cabinets

Over-Current on Discharge - The Battery Cabinet will open the breaker if current exceeds 800Amps for more than 2 seconds. A critical Alarm will occur if the cabinet every sees greater ...



## GSL Energy High-Voltage Battery Cabinet GSL ...

The GSL Energy high-voltage battery cabinet GSL-HV51200 is a robust energy storage system with capacities from 80kWh to 140kWh, using an innovative ...





## Contact Us

---

For catalog requests, pricing, or partnerships, please visit:  
<https://bringmethehorizon.eu>