



SolarMax Pro Energy Storage Systems

The difference between 60W and 100W solar





Overview

Is a fewer wattage solar panel a good idea?

The ONLY benefit is that there is 1 fewer panel. This should only be considered when space is extremely limited and when you are REQUIRED to hit a certain kW size that panels with lower wattage can't hit. Doubling the cost lowers your ROI and increases your time to pay off.

How fast is solar wattage compared to price per watt?

Not so fast. An important metric in solar is price per watt (PPW). Price Per watt is simply the cost of the panel divided by the wattage. This metric is far superior to just analyzing the panel wattage because it factors in price. You use this metric when comparing panels for purchase.

What are the different sizes of solar panels?

There are 3 standardized sizes of solar panels, namely: 60-cell solar panels size. The dimensions of 60-cell solar panels are as follows: 66 inches long, and 39 inches wide. That's basically a 66×39 solar panel. But what is the wattage?

That is unfortunately not listed at all. 72-cell solar panel size.

How many kW does a solar panel need?

Required solar panel output = $30 \text{ kWh} / 5 \text{ hours} = 6 \text{ kW}$. Step- 4 Consider Climate Changes: To account for efficiency losses and weather conditions, add a buffer to your solar panel output requirements. Usually, it is 1.2 to 1.5 which is multiplied by the desired output.

How many Watts Does a solar panel produce per square foot?

Dividing the specified wattage by the square footage of the solar panel will give us just this result: The average solar panel output per area is 17.25 watts per square foot. Let's say that you have 500 square feet of roof available for solar panel installation.



How do you calculate solar panel wattage?

Divide the average daily wattage usage by the average sunlight hours to measure solar panel wattage. Moreover, panel output efficiency directly impacts watts and the system's overall capacity. Nevertheless, energy usage, sunshine exposure, system capacity, panel types and materials all have an impact on the calculation.



The difference between 60W and 100W solar

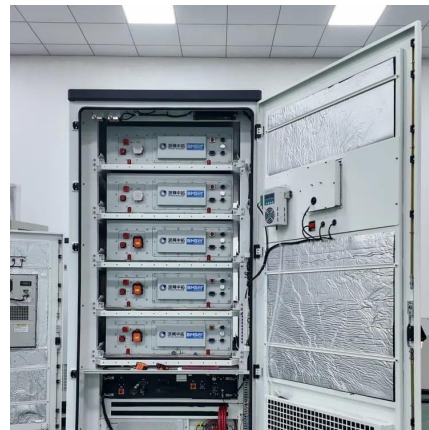


Lumens in Solar Lighting: How Brightness Really Works (Watt vs ...)

A 100W bulb was indeed brighter than a 60W bulb. But with LEDs and solar lighting, wattage measures how much power is consumed, not how much light is produced. ...

Woods 100W vs Coleman 60W Solar Panels

In this head-to-head comparison, I'll go over each panel's specs, ease of use, portability, and weather resistance, showing how they perform in real-world scenarios.



What is the difference between 60W Solar Panels and 100W ...

To sum up, there are significant differences between 60W solar panels and 100W solar panels in terms of power and power generation capacity, size and weight, and ...

Picking light bulbs : r/electrical

A "100W equivalent" LED will put out an amount of light EQUIVALENT to a 100W incandescent bulb, but it will only ACTUALLY use 14 Watts. So,

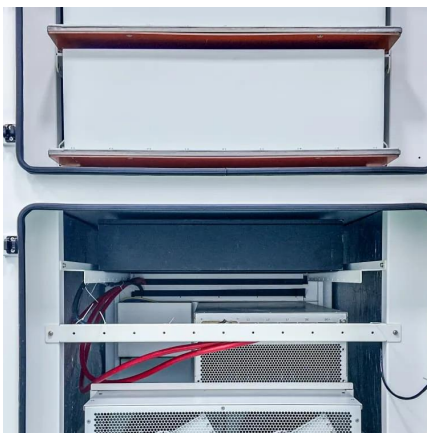


yes, you can ...



Sherpa 100AC Wireless Charging Power Bank + Nomad 50 Solar ...

The New Sherpa 100AC wireless charging power bank pairs with the Nomad 50 Solar Panel (50W) and 65W USB-C Fast Charger so you can have multiple ways to recharge quickly ...



What Size Portable Solar Panel Do You Need? (Wattage Explained)

Discover how to choose the right portable solar panel size for your needs. Learn about wattage, energy usage, and what panel is best for camping, RVs, and off-grid living.



[Standard Solar Panel Sizes And Wattages \(100W ...](#)

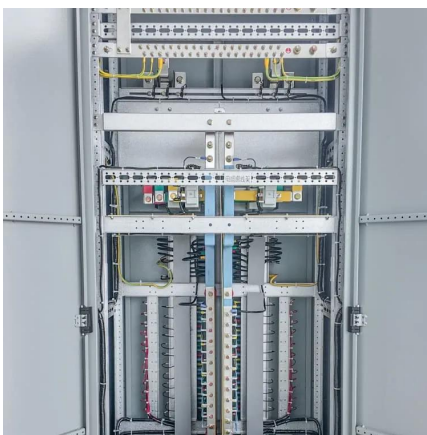
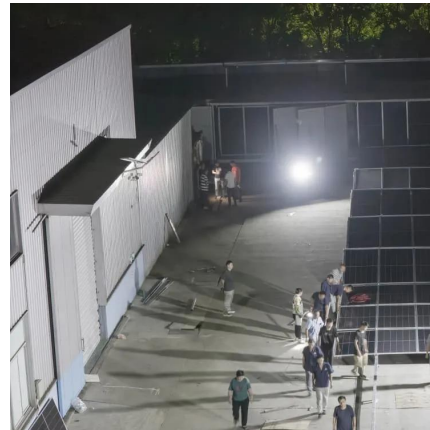
To bridge that gap of very useful knowledge needed, we have compared and averaged the sizes of 100-watt to 500-watt solar panels available on the ...





What is the difference between 240W charging cable ...

4 days ago· The wire cores of these two specifications are basically the same, but based on applicability or cost considerations, the price of C to C wires will ...



Wattage question: 80W vs. 100W?

Sorry for the newbie question, but why get one or the other? If I'm not looking to turn my stereo up really loud, do I not need the 100W? Is a higher wattage rating for volume ...

Can you put a 75 watt bulb in a 100-watt socket?

Can you use a 60W bulb in a 100W socket? For a 60-Watt fixture, you could use 100W, 125W, or even 150W led equivalents because they all consume less than 60Watts. It's ...



What is the difference between 60W Solar Panels and 100W Solar ...

To sum up, there are significant differences between 60W solar panels and 100W solar panels in terms of power and power generation capacity, size and weight, and ...



Solar Generator Size Calculator

Use our solar generator size calculator to determine the right solar generator capacity for your needs. Calculate power requirements for your devices and get accurate solar generator sizing ...



[Standard Solar Panel Sizes And Wattages \(100W-500W ...](#)

To bridge that gap of very useful knowledge needed, we have compared and averaged the sizes of 100-watt to 500-watt solar panels available on the market. The goal here is to get to the ...

[Jackery Solar Panel SolarSaga 60W vs. 100W](#)

With very little difference between the Solar Saga 60W and Solar Saga 100W where power is concerned, apart from the obvious 40 Wattage difference, both appear to be equally ...





What's New With The Jackery SolarSaga 100X Vs

Jackery has released a new SolarSaga model, the 100X. But what is new, if anything? Let's take a quick look at the popular solar panel.

Woods 100W vs Coleman 60W Solar Panels

In this head-to-head comparison, I'll go over each panel's specs, ease of use, portability, and weather resistance, showing how they perform in ...



What is the difference between 60 and 100 watt bulbs?

What is the difference between 60 and 100 watt bulbs? 60-watt bulb produces 800 lumens of light (most widely used in households) 75-watt bulb produces 1,100 lumens of light. ...



60W vs. 100W Portable Solar Panels: Which is Right ...

When it comes to selecting the right solar panel for your EXP PRO batteries, the choice often boils down to the 60W and 100W options. Here's a ...



[Solar Panel Efficiency Calculator and Formula](#)

The only difference between a solar panel's efficiency and its rated wattage is that a high efficient solar panel will take less space to produce ...



[Why 100 watts are not equal to 100 watts?](#)

Some explain how the panels produce X watts (voltage x amperage) but those measurements are valid only without a load, and the moment you plug something directly you ...



[Solar Panel Sizes and Wattage Explained](#)

Typically, lower-wattage panels are more compact and portable, whereas the higher-wattage ones are often larger and less common. Now, after all this explanation, the ...





Contact Us

For catalog requests, pricing, or partnerships, please visit:
<https://bringmethehorizon.eu>