



SolarMax Pro Energy Storage Systems

The base station is full of battery power





Overview

What are battery storage power stations?

Battery storage power stations are usually composed of batteries, power conversion systems (inverters), control systems and monitoring equipment. There are a variety of battery types used, including lithium-ion, lead-acid, flow cell batteries, and others, depending on factors such as energy density, cycle life, and cost.

How does a base battery work?

This process is called grid-balancing. Base batteries deploy energy to the grid faster than any other service, which is how Base is able to recoup the cost of the battery equipment and keep prices low for homeowners. The charge level of your Base battery will naturally fluctuate over time, rising and falling throughout a multi-day cycle.

What is a base battery system?

The Base battery system is built for performance and reliability. It combines a high-capacity lithium iron battery with intelligent software to optimize energy use. The Base battery system has three main components: the battery pack, inverter, and hub. The long white unit is the battery pack. We mount the battery pack on the ground.

What happens when a base station is in active state?

1) When the base station is in active state, its power loss P_{active} consists of transmitting power P_{tx} and inherent power P_{fix} . With an increase in the communication load of the acer station, the corresponding transmitting power P_{tx} increases linearly.

What is the traditional configuration method of a base station battery?

The traditional configuration method of a base station battery comprehensively considers the importance of the 5G base station, reliability of



mains, geographical location, long-term development, battery life, and other factors .

Does a 5G base station use energy storage power supply?

In this article, we assumed that the 5G base station adopted the mode of combining grid power supply with energy storage power supply.



The base station is full of battery power



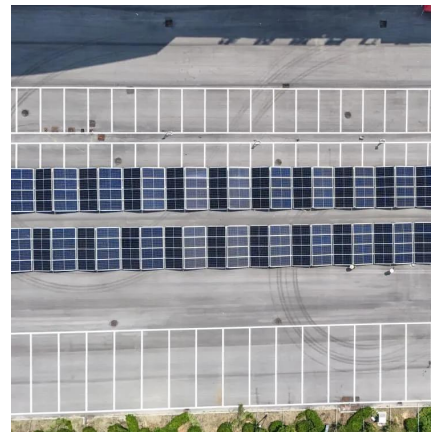
Tractive Base Station

Extended battery life with a Tractive Base Station
The Tractive Base Station is a compact, innovative solution to help you get the most out of your Tractive cat or dog tracker. When ...

Lithium battery is the magic weapon for

...

Intelligent energy storage lithium battery can effectively protect the base station battery in the event of the accidental short circuit, lightning shock, ...



Strategy of 5G Base Station Energy Storage Participating in the Power

Then, the framework of 5G base station participating in power system frequency regulation is constructed, and the specific steps are described. Finally, with the objective to ...

Optimal configuration of 5G base station energy storage ...

To maximize overall benefits for the investors and operators of base station energy storage, we



proposed a bi-level optimization model for the operation of the energy storage, ...



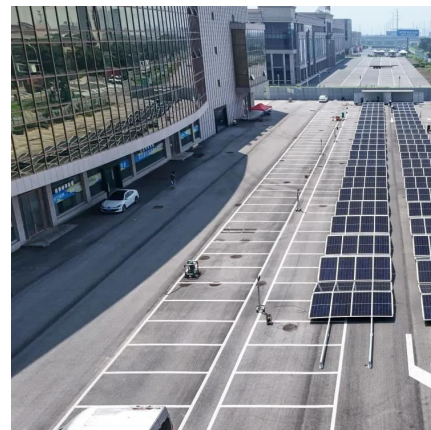
A technical look at 5G energy consumption and performance

Figure 3: Base station power model. Parameters used for the evaluations with this cellular base station power model. Energy saving features of 5G New Radio The 5G NR ...



[How the Base battery works: A complete guide to grid ...](#)

This guide covers everything you need to know about how your Base battery operates, protects your home, and supports the power grid. You'll also find ...



[Steelseries Nova pro wireless base station not ...](#)

I've recently run into the issue where my base station will not detect and thus not charge the battery. any ideas for fixes on this? i can't seem to figure it out so ...





Base station operation guidelines

If semi-permanent or permanent operation is required, however, the modular receiver delivers significant advantages. Base station setup guidelines For good performance, observe the ...



Lithium battery is the magic weapon for communication base station

Intelligent energy storage lithium battery can effectively protect the base station battery in the event of the accidental short circuit, lightning shock, and other conditions, timely ...

Optimal configuration for photovoltaic storage system capacity in ...

Base station operators deploy a large number of distributed photovoltaics to solve the problems of high energy consumption and high electricity costs of 5G base stations. In this ...



What are base station energy storage batteries used for?

Innovations in battery technologies, such as lithium-sulfur or solid-state batteries, promise higher energy densities and improved lifespan, ...



Base Station Battery Capacity: The Backbone of Modern Telecom

As one engineer in Mumbai's monsoon season put it: "We don't just store power anymore--we orchestrate it." The real question isn't about having enough battery capacity, but redefining ...



Basic components of a 5G base station

With the mass construction of 5G base stations, the backup batteries of base stations remain idle for most of the time. It is necessary to explore these ...

Base station operation guidelines

Make sure that the GNSS receiver does not lose power. To operate continuously for more than a few hours without loss of power at the base station, provide external power. Sources of ...





What are base station energy storage batteries used for?

Innovations in battery technologies, such as lithium-sulfur or solid-state batteries, promise higher energy densities and improved lifespan, thereby enhancing the operational ...

What is a base station energy storage battery?

Base station energy storage batteries offer vital support to enhance the stability of both telecommunications and electrical grids. During power ...



Basic components of a 5G base station

With the mass construction of 5G base stations, the backup batteries of base stations remain idle for most of the time. It is necessary to explore these massive 5G base station energy

Battery storage power station - a comprehensive guide

This article provides a comprehensive guide on battery storage power station (also known as energy storage power stations). These facilities play a crucial role in modern power ...



Base Station alert troubleshooting

Base Stations and Network Command Suite
When troubleshooting Base Station alerts, you can remotely connect to the Base Station via SSH through the Show Terminal option in the ...



Battery station not charging the battery

Whenever the battery is in the battery station it shows that it is fully charged but when I put the battery in the headset it doesn't turn on as if the battery is empty. - SteelSeries ...



What is a base station energy storage battery? , NenPower

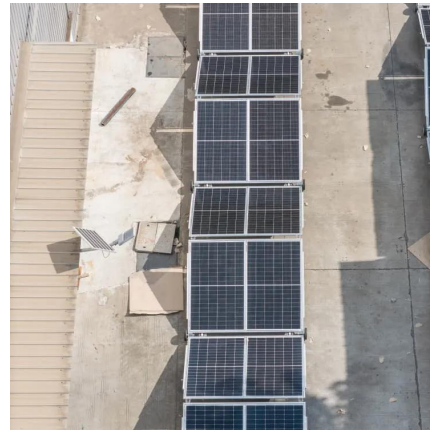
Base station energy storage batteries offer vital support to enhance the stability of both telecommunications and electrical grids. During power outages or disruptions, these ...





Mobile Base Station Energy Storage Principle: How It Keeps You

Meet the unsung hero of modern connectivity - mobile base station energy storage systems. These technological marvels work like giant power banks for cell towers, ensuring ...



[What to Know if Your Ring Alarm Goes Offline](#)

Your Base Station includes a battery backup that allows your system to keep working if the power goes out or your Base Station is accidentally unplugged. When the Base Station starts using ...

[MTS4L TETRA/LTE Base Station Specification Sheet](#)

C-SCCH - additional control channels on the main
The MTS4L can be installed as a TETRA only base carrier, quadrupling existing capacity. station, but it can include the services for the ...



[Battery storage power station - a comprehensive guide](#)

This article provides a comprehensive guide on battery storage power station (also known as energy storage power stations). These facilities play a crucial role in modern power grids by ...



[How the Base battery works: A complete guide to grid ...](#)

This guide covers everything you need to know about how your Base battery operates, protects your home, and supports the power grid. You'll also find answers to common battery myths ...



Revolutionising Connectivity with Reliable Base Station Energy ...

Discover how base station energy storage empowers reliable telecom connectivity, reduces OPEX, and supports hybrid energy.

?What does the error "Power Outage" mean? , SimpliSafe Support

...

After removing the battery cover on the bottom of the Base Station, confirm that there are 4 1.2V, 1300 mAh NiMH batteries in the Base Station. You should never place regular alkaline

...





Contact Us

For catalog requests, pricing, or partnerships, please visit:
<https://bringmethehorizon.eu>