



SolarMax Pro Energy Storage Systems

Some parameters of outdoor power supply





Some parameters of outdoor power supply

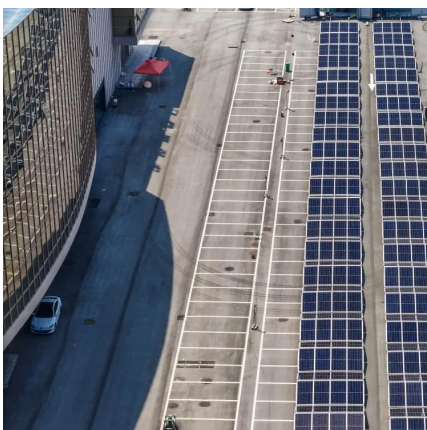


Outdoor power supply Q& A: How to read the parameters of outdoor power

How to Read Outdoor Power Supply Parameters: Power, Capacity, Charge and Discharge Speed, and Safety Performance. Learn how to choose the right outdoor power ...

Outdoor energy storage power supply specification parameter ...

Figure 1: Block diagram of a power supply Let's get into the each of these specification parameters one by one. AC input voltage range (Vin) - This is the range that your power ...



[Outdoor Power System Design and Cost Considerations](#)

Below, you will learn about the reasons driving this growth trend, the benefits and drawbacks of outdoor power systems, as well as the challenges associated with developing ...

A New IEC Standard on the Measurement of Power Quality ...

The objectives of this standard, as stated in "Power Quality" will provide some perspective on



the its scope, are to facilitate - and hopefully ensure - underlying issues, and will show how useful ...



Outdoor power supply: What are the parameters of outdoor power supply?

A: The selection of outdoor power supply mainly depends on the interface type and quantity of outdoor power supply, power, battery capacity, charging time, charging mode and ...

What are the parameters of outdoor power supply?

Answer: The choice of outdoor power supply mainly depends on the main parameters such as the interface type and quantity, power, battery capacity, charging time, ...



Outdoor power supply Q& A: How to read the parameters of ...

How to Read Outdoor Power Supply Parameters: Power, Capacity, Charge and Discharge Speed, and Safety Performance. Learn how to choose the right outdoor power ...





What are the factors of outdoor power supply production factory?

Recommended selection is over 1000W. As for how much, see what power you want to load, how long it wants to use it, you have to figure out these parameters before choosing an outdoor ...



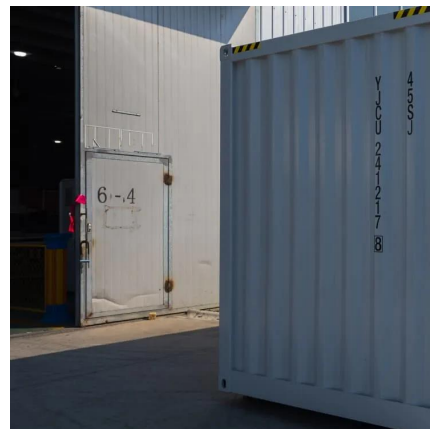
What are the functions and parameters of the outdoor energy ...

Take the STW-1000W outdoor power supply as an example. It uses a power-type ternary lithium-ion battery with a nominal capacity of 25.9V40.8AH (1,056.72WH). In this way, it is easy to ...



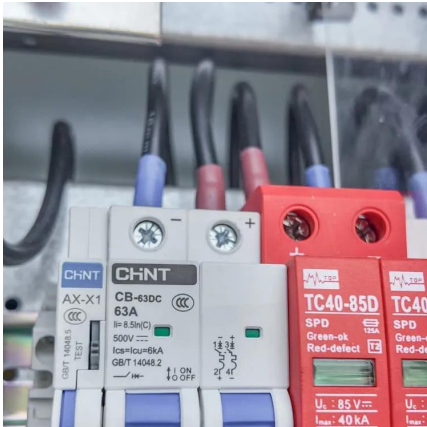
[Power Supply Specifications » Electronics Notes](#)

Tutorial, information overview of the basics of power supply specifications and specs detailing terms such as voltage accuracy, ripple, hum and noise, ...



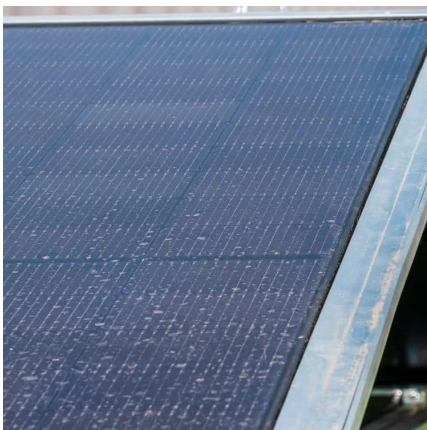
[Main parameters of outdoor energy storage power supply](#)

Capacity, which specifies the total amount of energy that can be stored, 2. Power rating, Energy storage batteries, as the main flexible regulation resource in a power system [2], could ...



Important parameters of outdoor power supply

The capacity is the most important! The larger the capacity of the outdoor power supply, the longer the power supply time! Battery capacity is one of the most important performance ...



Key factors in power supply selection

A few basic factors go into the selection of low-voltage dc/dc and ac/dc power supplies for OEM use. At the risk of stating the obvious, the key objective is to bring the input ...

Key Configuration Parameters for Outdoor Power Supply ...

This guide explores 8 critical configuration parameters, supported by industry data and real-world examples, to help engineers and project managers optimize power solutions for harsh outdoor ...





Key Configuration Parameters for Outdoor Power Supply ...

Summary: Designing reliable outdoor power systems requires careful analysis of environmental adaptability, efficiency, and safety. This guide explores 8 critical configuration parameters, ...

[A Specifiers' guide to designing outdoor power supplies](#)

2 days ago · Specifying power units for outdoor spaces An effective specification plays a key role in project fulfilment. First and foremost, what are the client requirements for needing an ...



[Uninterruptible Power Supply Outdoor](#)

In a world increasingly reliant on technology, maintaining a stable and continuous power supply has become more critical than ever. This is particularly true for outdoor environments where ...

What are the functions and parameters of the outdoor energy ...

Take the STW-1000W outdoor power supply as an example: the output power is 1000W, and it can load various electrical equipment within 1000W, which is its load capacity. The output ...



[Huawei camping outdoor power supply parameters](#)

How long does it take to charge Huawei's outdoor power supply? The 500Wh version can be fully charged in 3 hours, and the 1000Wh version can be fully charged in 4.5 hours. There's more, ...



[Outdoor power supply: What are the parameters of ...](#)

A: The selection of outdoor power supply mainly depends on the interface type and quantity of outdoor power supply, power, battery capacity, ...



[Right Outdoor Power Configuration: Choose the Best Setup](#)

Find the right outdoor power configuration for your needs. Learn about amperage, voltage, and safety to ensure efficient power distribution.





How to Approach a Power-Supply Design - Part 1

Switch-mode power-supply design can be a mysterious thing if you do not know how and where to start, because there is a great variety of topologies and controller types from which to choose. ...



Some parameters of outdoor power supply

How to Read Outdoor Power Supply Parameters: Power, Capacity, Charge and Discharge Speed, and Safety Performance. Learn how to choose the right outdoor power supply for your needs ...

Outdoor power supply selection parameters

How do I choose the right power supply for my application? It pays to understand a few important electrical parameters that can dictate the kind of applications specific power supplies can ...



Contact Us

For catalog requests, pricing, or partnerships, please visit:
<https://bringmethehorizon.eu>