



SolarMax Pro Energy Storage Systems

Replacing batteries in small communication base stations





Overview

What makes a telecom battery pack compatible with a base station?

Compatibility and Installation Voltage Compatibility: 48V is the standard voltage for telecom base stations, so the battery pack's output voltage must align with base station equipment requirements. Modular Design: A modular structure simplifies installation, maintenance, and scalability.

Do I need to replace my base station's batteries?

If you're not certain which system you have, see the Which Version of the SimpliSafe® System Do I Have article. You will likely never need to replace your Base Station's batteries as they are rechargeable and meant to last. The Base Station takes four (4) 1.2V, 1300mAh nickel-metal hydride (NiMH) rechargeable batteries.

Which battery is best for telecom base station backup power?

Among various battery technologies, Lithium Iron Phosphate (LiFePO4) batteries stand out as the ideal choice for telecom base station backup power due to their high safety, long lifespan, and excellent thermal stability.

How do I replace a NiMH rechargeable battery?

Once you have acquired the necessary NiMH rechargeable batteries, you can follow the steps below to replace them: NEVER insert regular alkaline batteries into the Base Station as they may damage the device. Plug your Base Station back into power. Was this helpful?

.

How many batteries does the base station take?

The Base Station takes four (4) 1.2V, 1300mAh nickel-metal hydride (NiMH) rechargeable batteries. Regular alkaline batteries should never be inserted into the Base Station, as they may damage the device. Once you have



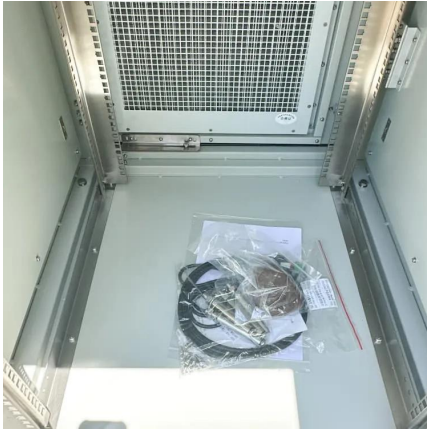
acquired the necessary NiMH rechargeable batteries, you can follow the steps below to replace them:.

How do I choose the right battery for my telecom system?

Choosing the right battery for your telecom system involves several critical factors. Start by assessing the energy requirements of your equipment. Different devices will have different power needs, which can influence battery capacity. Next, consider the operating environment. Is it indoors or outdoors?



Replacing batteries in small communication base stations



[How To Replace Base Station Batteries . SimpliSafe ...](#)

You will likely never need to replace your Base Station's batteries as they are rechargeable and meant to last. The Base Station takes four (4) 1.2V, ...

Selection and maintenance of batteries for communication base ...

This paper focuses on the engineering application of battery in the power supply system of communication base stations, and focuses on the selection, installation and maintenance of ...



[How to Change SimpliSafe Battery? Your Complete ...](#)

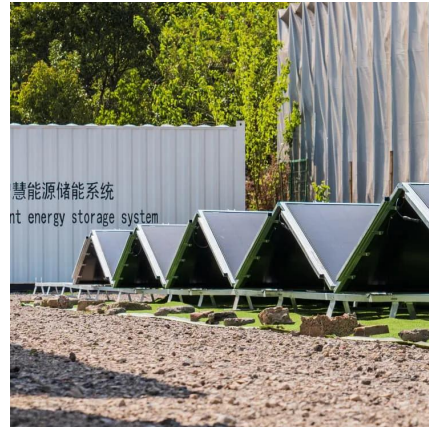
Here's a Quick TLDR If you need to change the battery in your SimpliSafe security system, start by disarming the system. Then, locate the base station ...

Selection and maintenance of battery for communication base station

Focused on the engineering applications of

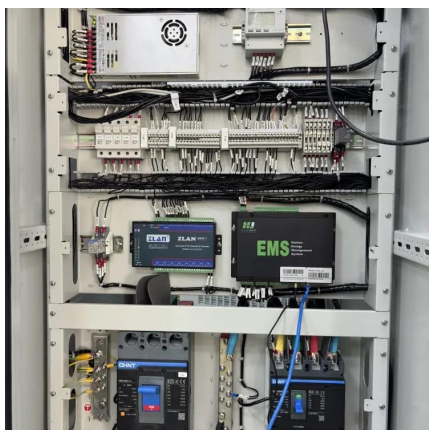


batteries in the communication stations, this paper introduces the selections, installations and maintenances of batteries for communication ...



Weather Station Lithium Battery Installation Instructions

NOTE: The first diagnostic blink indicates the strength of the 2 AAA lithium batteries in the SLW5 or RFS5. A Red signal would indicate a need to replace ...



How To Change Battery in Ring Alarm Base Station (2nd Gen)

Ring Alarm Base Station (2nd Gen)
<https://amzn.to/3X1jNCu> Battery Replacement
SEB1N9-0000 5100mAh for Ring-Alarm Home
Base Station 4HB1U9-0EN0 <https://amz>



Selection and maintenance of batteries for communication base stations

This paper focuses on the engineering application of battery in the power supply system of communication base stations, and focuses on the selection, installation and maintenance of ...



?Changing batteries in base station , SimpliSafe Support Home

Changing batteries in base station Is there a manual, with photos or step by step instructions, showing how to replace the battery in the base station? I had a power outage and ...



Telecom Base Station Backup Power Solution: Design Guide for ...

Discover the 48V 100Ah LiFePO4 battery pack for telecom base stations: safe, long-lasting, and eco-friendly. Optimize reliability with our design guide.

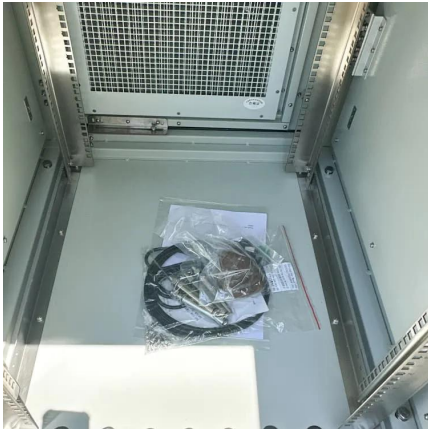
[Base Stations and Cell Towers: The Pillars of Mobile ...](#)

Base stations and cell towers are critical components of cellular communication systems, serving as the infrastructure that supports seamless ...



[Telecom Base Station Backup Power Solution: Design ...](#)

Discover the 48V 100Ah LiFePO4 battery pack for telecom base stations: safe, long-lasting, and eco-friendly. Optimize reliability with our ...



[How To Change Battery In Simplisafe Sensor](#)

How do I remove the battery from my SimpliSafe? Removing the battery from your SimpliSafe system is a straightforward process that can be done in a few simple steps. ...



Optimal configuration of 5G base station energy storage ...

The high-energy consumption and high construction density of 5G base stations have greatly increased the demand for backup energy storage batteries. To maximize overall ...

Communication Base Station Backup Power LiFePO4 Supplier

From lead-acid batteries to LiFePO4 (replacement tide) is derived from the new requirements for the expansion and upgrade of the power supply in the field of ...





What Are the Critical Aspects of Telecom Base Station Backup Batteries?

Telecom base station backup batteries are essential for ensuring uninterrupted communication by providing reliable, long-lasting power during outages. Critical aspects ...

Global Communication Base Station Battery Trends: Region ...

The Communication Base Station Battery market is experiencing robust growth, driven by the expanding deployment of 5G and 4G networks globally. The increasing demand ...



[UPS Batteries in Telecom Base Stations - leagend](#)

This article delves deep into the role, technology, maintenance, and future trends of UPS batteries in telecom base stations, offering a detailed ...

[Replacing batteries in communication base stations](#)

Repurposing spent batteries in communication base stations (CBSs) is a promising option to dispose massive spent lithium-ion batteries (LIBs) from electric vehicles



Types of Batteries Used in Telecom Systems: A Guide

Some batteries require regular upkeep while others are more user-friendly. Balancing these factors will guide you toward making an informed decision that suits your ...



How To Replace Base Station Batteries , SimpliSafe Support Home

You will likely never need to replace your Base Station's batteries as they are rechargeable and meant to last. The Base Station takes four (4) 1.2V, 1300mAh nickel-metal hydride (NiMH) ...



Types of Batteries Used in Telecom Systems: A Guide

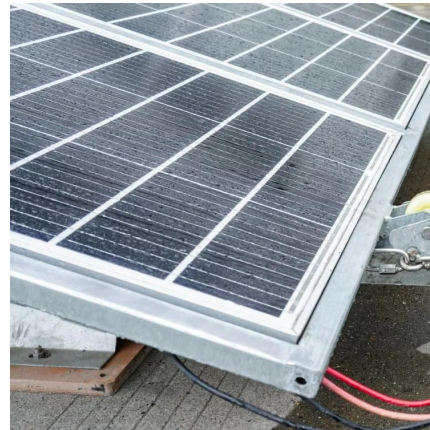
Some batteries require regular upkeep while others are more user-friendly. Balancing these factors will guide you toward making an informed ...





[UPS Batteries in Telecom Base Stations - leagend](#)

This article delves deep into the role, technology, maintenance, and future trends of UPS batteries in telecom base stations, offering a detailed exploration of how these systems ...



Wireless Weather Station Battery Replacement Instructions

Restore Signal Connection After changing the batteries, you need to make sure the communication between the base station and the outdoor transmitter is restored: The base ...

What Are the Critical Aspects of Telecom Base Station Backup ...

Telecom base station backup batteries are essential for ensuring uninterrupted communication by providing reliable, long-lasting power during outages. Critical aspects ...



Selection and maintenance of battery for communication base ...

Focused on the engineering applications of batteries in the communication stations, this paper introduces the selections, installations and maintenances of batteries for communication ...



Understanding Backup Battery Requirements for Telecom Base Stations

Telecom base stations require reliable backup power to ensure uninterrupted communication services. Selecting the right backup battery is crucial for network stability and ...



[Understanding Backup Battery Requirements for ...](#)

Telecom base stations require reliable backup power to ensure uninterrupted communication services. Selecting the right backup battery is ...

[SimpliSafe Batteries: Everything You Need to Know](#)

Low Battery Alerts: SimpliSafe devices will typically send a notification to your app or the base station when the battery is running low. This is your first clue to change them.





Optimization of Communication Base Station Battery ...

In the communication power supply field, base station interruptions may occur due to sudden natural disasters or unstable power supplies. This work studies the optimization of ...

Communication Base Station Backup Power LiFePO4 ...

From lead-acid batteries to LiFePO4 (replacement tide) is derived from the new requirements for the expansion and upgrade of the power supply ...



Lithium battery is the winning weapon of ...

For example, lithium iron phosphate batteries have been used in large energy storage power stations, communication base stations, electric vehicles and ...

Contact Us

For catalog requests, pricing, or partnerships, please visit:
<https://bringmethehorizon.eu>