



SolarMax Pro Energy Storage Systems

Power base station installation





Overview

How do I install a base station CB system?

Base Station CB systems are not complicated to install, but there are a few things you should know. So, let's get into it. First, you need a radio system that works off of AC power. Most CB radios are designed for vehicles that are powered by DC 12-volt power systems.

How do I install a base station?

We also advise users to install the Base Station 3-5 feet off of the floor, and 5 feet away from all major electronics. To install your Base Station you will want to start by removing the Base Station from the box. Next, plug the Base Station into a power outlet using the included power adapter.

Are base station CB systems complicated to install?

Base Station CB systems are not complicated to install, but there are a few things you should know. Get the down-and-dirty at Right Channel Radios. Free Shipping \$75+ and killer customer service.

Do base stations need a power supply?

Power Requirements: Base stations operate on 120V AC power rather than 12V DC, requiring either built-in power supplies or separate AC-to-DC converters. Size and Ergonomics: Designed for desktop use, these radios feature full-size controls, making operation more comfortable during extended sessions.

How much does a base station CB cost?

HOA and Zoning: Check local regulations and homeowner association rules before installing visible antennas. How much does a complete base station CB setup cost?

Basic setups start around \$300-500, including radio, antenna, coax, and



power supply. Mid-range systems run \$500-1000, while premium installations can exceed \$2000.

How should a base station antenna be installed?

The hardware installation guidelines are limited but important for reliable base station performance. The base station antenna should be installed in open sky conditions, away from external influences that hinder the direct line of sight between the antenna and the GNSS satellites.



Power base station installation



[Gateway and Base Station Installation Guide](#)

The three wires (white, black, and green) are attached to the power unit and ground (must be connected to earth ground). Seal the knockout to prevent water or moisture from entering the ...

[Original SimpliSafe® Base Station Installation Guide](#)

To install your Base Station you will want to start by removing the Base Station from the box. Next, plug the Base Station into a power outlet using the ...



[Solar Power Installation Services , Base Station ...](#)

Looking for expert solar power installation services? Contact Base Station Engineering Consultants for top-quality solar panel installation.

[How to set up a base station - Chapter 3: Hardware ...](#)

This is the third of a series of articles dealing with how to correctly set up a base station. This



article provides details on how to handle the physical installation ...



MultiConnect Conduit(TM) IP67 Base Station Connector Location

MultiConnect Conduit IP67 Base Station Use the MultiConnect Conduit IP67 Base Station (MTCDTIP) to deploy Conduit gateways in the field.afety information before starting Base ...



Ring Alarm

Video showing how I installed the Ring base unit in my hallway and routed the cables through the ceiling to keep the cables hidden. I used the following extension cable during the install.



[Installation and hardware , Base Help Center](#)

When does Base deliver the installation equipment? Is there anything I should know about the pallet delivery? What are Base batteries made of? What are the advantages of our chemical ...



Test and Measurement

The goal of Base Station Transmits is to discuss challenges faced by engineers and technicians who must optimize today's wireless networks. Topics include antenna systems, ...



Simple Steps to Mounting a Base Station to the Wall: A Quick Guide

Whether it is for a home network, a small business, or a large corporate environment, knowing the simple steps to mount a base station to the wall is essential for ...

Power Base Station

Base station power refers to the output power level of base stations, which is defined by specific maximum limits (24 dBm for Local Area base stations and 20 dBm for Home base stations) ...



How to set up a base station - Chapter 3: Hardware installation

This is the third of a series of articles dealing with how to correctly set up a base station. This article provides details on how to handle the physical installation of the base station setup.



[Original SimpliSafe® Base Station Installation Guide](#)

To install your Base Station you will want to start by removing the Base Station from the box. Next, plug the Base Station into a power outlet using the included power adapter. The Base ...



Central Base Station

The Central Base Station makes it easy for electricians to quickly install the SimplySNAP site controller and enables quick and simple access to a switch station that can be programmed to ...



[How to Set Up a Base Station CB System](#)

Base Station CB systems are not complicated to install, but there are a few things you should know. So, let's get into it. First, you need a radio system that works off of AC ...



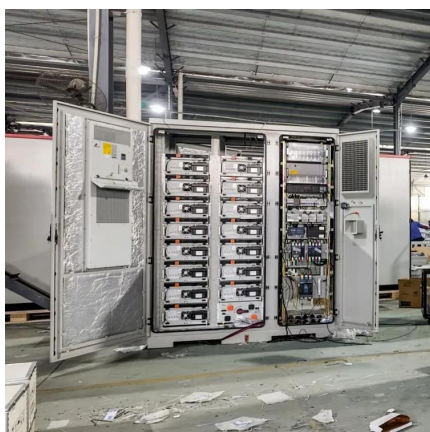


What does a typical Base system installation look like?

What does a typical Base system installation look like? Base offers a couple battery system configurations (spec sheets). Here's an example of a single ground-mounted battery ...

Installing SteamVR Base Station 2.0

Mount the base stations diagonally at opposite corners of your space and near power outlets. For details on how to use the mounting kit, see Using the ...



Conduit IP67 Base Station MTCDTIP Hardware Installation ...

After connecting and powering up the Base Station, refer the Conduit Base Station IP67 Getting Started Guide (S000665) and related documentation available at ...

How to Set Up a Base Station CB System: A Complete Installation ...

This guide will walk you through the basic understanding of Base Station CB System, how to install them and how to do that right



Industrial 5G Cloud Base Station

Industrial 5G Cloud Base StationThe 5G cloud base station for industry is based on ZTE's unique NodeEngine computing power base station solution. By ...



Base stations and networks

Base station output power is relatively low The antenna output power level is typically between 20 watts and a few hundred watts for an outdoor base station. Television transmitters, by ...



Contact Us

For catalog requests, pricing, or partnerships, please visit:
<https://bringmethehorizon.eu>