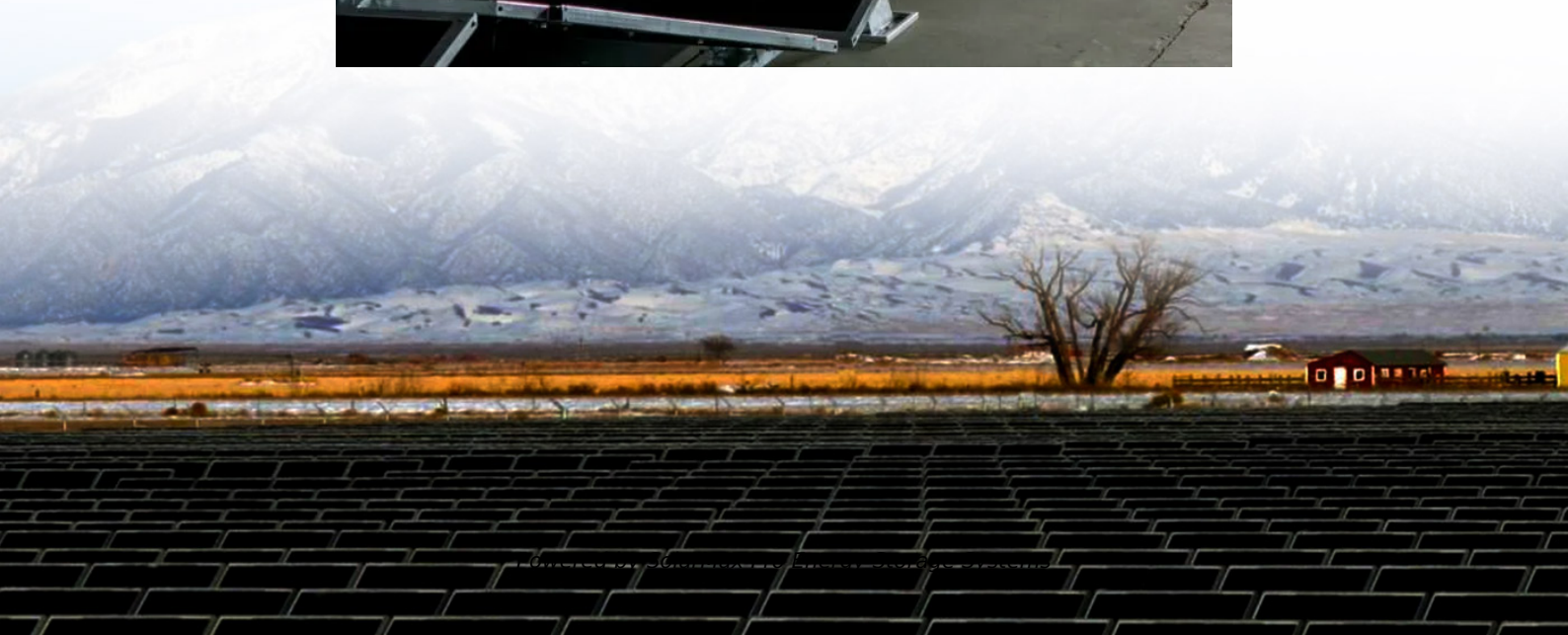




**SolarMax Pro Energy Storage Systems**

## **Power base station communication equipment**





## Overview

---

What are the components of a base station?

**Power Supply:** The power source provides the electrical energy to base station elements. It often features auxiliary power supply mechanisms that guarantee operation in case of lost or interrupted electricity, during blackouts. **Baseband Processor:** The baseband processor is responsible for the processing of the digital signals.

What type of generator does a base station use?

The air conditioning of the base station runs at 220 VAC. These base stations can be powered by two types of diesel generators. The first is the conventional type where 220 VAC is converted to 48 VDC to charge the batteries and power the communication equipment.

What is a base station?

What is Base Station?

A base station represents an access point for a wireless device to communicate within its coverage area. It usually connects the device to other networks or devices through a dedicated high bandwidth wire of fiber optic connection. Base stations typically have a transceiver, capable of sending and receiving wireless signals;.

What makes a telecom battery pack compatible with a base station?

**Compatibility and Installation Voltage Compatibility:** 48V is the standard voltage for telecom base stations, so the battery pack's output voltage must align with base station equipment requirements. **Modular Design:** A modular structure simplifies installation, maintenance, and scalability.

How do cellular base stations work?

Most transceivers in the cellular base stations are run by 48 VDC to charge the



batteries and power the communication equipment. The air conditioning of the base station runs at 220 VAC. These base stations can be powered by two types of diesel generators.

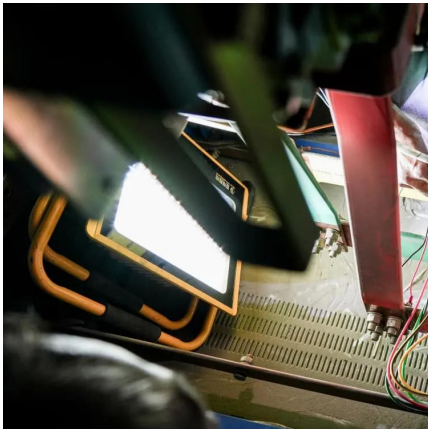
How much power does a cellular base station use?

This problem exists particularly among the mobile telephony towers in rural areas, that lack quality grid power supply. A cellular base station can use anywhere from 1 to 5 kW power per hour depending upon the number of transceivers attached to the base station, the age of cell towers, and energy needed for air conditioning.



## Power base station communication equipment

---



### Basic components of a 5G base station

The 5G base station is composed of a power supply system and communication equipment [4], in addition to some auxiliary equipment such as air conditioning and lighting.

### Communication Base Station Energy Solutions

Due to harsh climate conditions and the absence of on-site personnel to maintain fuel generators, the company required a reliable solution to ensure the base station's stable operation and ...



### Telecom Base Station Power System Solution

In order to ensure the continuity and efficiency of communication services, the power system of telecommunications base stations needs to have high reliability, stability and high efficiency to ...

### Types and Applications of Mobile Communication ...

Mobile communication base station is a form of radio station, which refers to a radio transceiver



station that transmits information between mobile ...



### Improved Model of Base Station Power System for the ...

However, the widespread deployment of 5G base stations has led to increased energy consumption. Individual 5G base stations require 3-4 ...



### **Optimizing the power supply design for communication base stations**

Comprehensively evaluate various factors and select the most suitable power system design scheme to ensure the stable and reliable operation of the base station.



### Tactical com: radio antenna installation and radio

Study with Quizlet and memorize flashcards containing terms like Never erected the antenna where powerlines could possibly sag or break and come into contact with the antenna or ...







## Telecom Base Station Backup Power Solution: Design ...

Discover the 48V 100Ah LiFePO4 battery pack for telecom base stations: safe, long-lasting, and eco-friendly. Optimize reliability with our ...

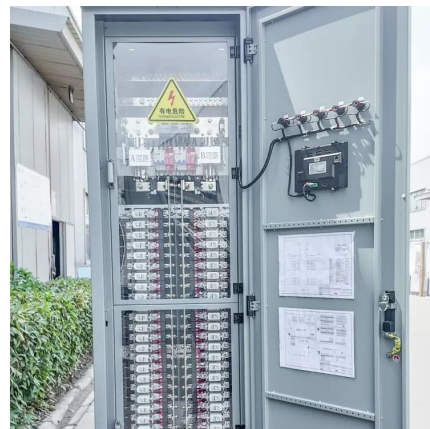


## Air Force Tactical Communications Flashcards , Quizlet

Study with Quizlet and memorize flashcards containing terms like When you first turn on the AN/PRC-163, what will happen?, The multiband, handheld radio\_\_\_\_\_ (PA) is used for both ...

## **Lightning and Surge Protection for Communication Station**

Install lightning rods, grounding, surge protectors, shielding, and follow standards for effective communication station protection.



## **huawei base station**

A base station, also known as an eNodeB (for 4G LTE) or gNodeB (for 5G NR) in Huawei's terminology, is a piece of equipment that facilitates wireless communication between ...



## Power Base Station

There is tight pressure on cost and complexity for all telecommunications equipment, but this is much more pronounced for terminals, due to the scale of the total market, which is more than ...

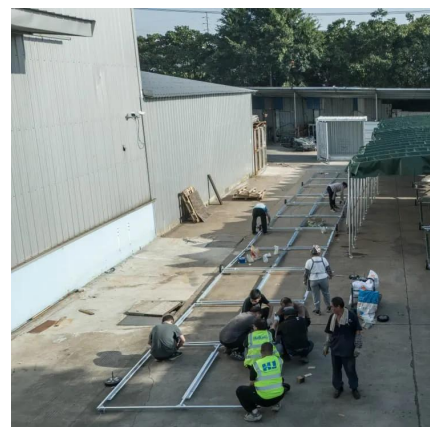


## Unraveling the Mysteries of Cell Towers and Base ...

In the ever-evolving landscape of mobile communications, understanding the intricacies of cell sites, cell towers, and base stations is crucial. These terms, ...

## CB and Ham Radio Base Station Components

Explore a variety of CB and Ham radio base station components for enhanced communication, including antennas, mounts, cables, and other essential ...





## Network Communication

DC Remote Power Supply, MIMO Modules, Solar Power Modules: Integrated into energy cabinets for both indoor and outdoor applications, these modules are used for intelligent power supply ...

## WO2012137293A1

User equipment (UE) according to one embodiment comprises a radio communication unit (210) which receives, as parameters for processing related to handover to an adjacent base station, ...



## Communications System Power Supply Designs

Unique solutions for DSL, VoIP and 3G Base Stations illustrate the wide range of power system architectures and the opportunities available for higher level integration.

## Telecom Base Station Backup Power Solution: Design Guide for ...

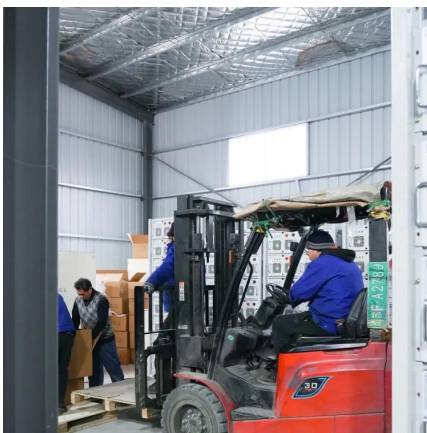
Discover the 48V 100Ah LiFePO4 battery pack for telecom base stations: safe, long-lasting, and eco-friendly. Optimize reliability with our design guide.





### Communication Base Station Backup Battery

When natural disasters cut off power grids, when extreme weather threatens power supply safety, our communication backup power system with intelligent charge/discharge management and ...



### Communication Base Station Energy Solutions

Due to harsh climate conditions and the absence of on-site personnel to maintain fuel generators, the company required a reliable solution to ensure the base ...



## Contact Us

---

For catalog requests, pricing, or partnerships, please visit:  
<https://bringmethehorizon.eu>