



**SolarMax Pro Energy Storage Systems**

# Photovoltaic module cell weight





## Overview

---

The roofs of current homes can safely support about 20 pounds per square foot. Including the mounting equipment, residential solar panels weigh about 3 to 4 pounds per square foot. Even after a snowstorm, your roof is unlikely to encounter any trouble. If you have 10 to 12 inches of unpacked snow, the.

The wattages of solar panels can range greatly. While some solar panels power select appliances or RVs, others are powerhouses, and others can power.

Here are some quick facts about the average weight of solar panels with differing wattages: 1. 100-watt solar panels from 5 of the most popular brands average 18.8.

The average solar panel weight ranges from 40 to 55 pounds, with 40 pounds as the most common. Like all products' specifications, you'll spot exceptions. Some tiny portable panels weigh only 5 pounds, and heavy-frame panels can clock in at 62 pounds.



## Photovoltaic module cell weight

---

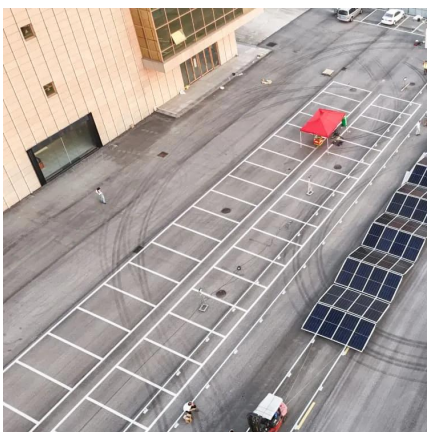


### 36-Cell Monocrystalline Photovoltaic Module , HELIENE

The newest and smallest addition to the HELIENE product lineup, the 36M is a 36-cell monocrystalline photovoltaic module produced in our factories.

### **Solar modules component weights?**

Here are the approximate component weights of a new generation n-type PV module: The weight of the solar cell is the most significant factor in the total weight of an n-type PV



### Complete guide to solar panel size and weigh

Below is a range of solar panel sizes. The 50W solar panel measures 670\*540\*25mm and weighs 20kg. The 100W solar panel has dimensions of 1030\*460\*30mm ...

### How Much Do Solar Panels Weigh? A Complete ...

In general, residential solar panels can weigh as low as 35 lbs (kg) and as high as 50 lbs (in kg).



On average, most residential solar panels weigh ...

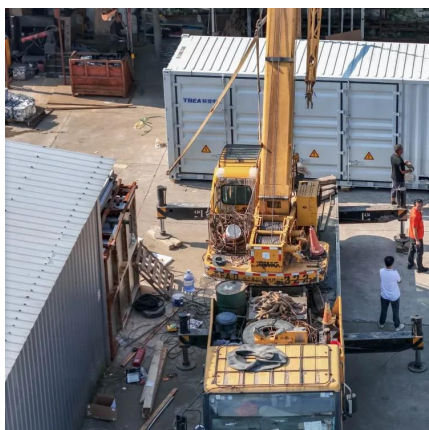


## Solar Panels Size & Weight (Including Commercial Dimensions)

Check out this full guide on solar panels size, weight, and other characteristics, including a comparison between Residential and Commercial panels.

## [How Much Do Solar Panels Weigh? 2025 Accurate ...](#)

Photovoltaic Panel System (PV Cells) Typically, the average weight of a photovoltaic panel (also known as a thin-film panel) is 40 pounds ...



## Types of photovoltaic solar panels and their characteristics

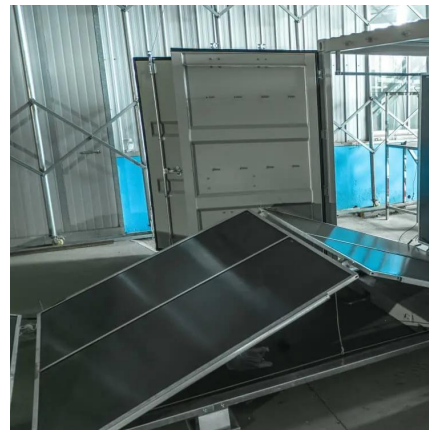
Types of photovoltaic solar panels: characteristics and advantages for your installation Photovoltaic solar panels are devices specifically designed for the generation of ...





## Photovoltaic module

Photovoltaic modules, commonly known as solar panels, are a web that captures solar power to transform it into sustainable energy. A semiconductor material, usually silicon, is the basis of ...



### [Solar Panel Size And Weight: A Comprehensive Guide](#)

When considering residential solar panels, typical configurations consist of 60 cells measuring approximately 3.25 feet by 5.5 feet. These panels cover an area of 17.62 square ...

### [Solar panel size and weight: everything you need to ...](#)

To calculate the total weight of your solar panels, you can multiply the number of panels by their individual weight, then add the estimated weight ...



## Prototype design and development of low-load-roof photovoltaic modules

Four prototypes of lightweight photovoltaic modules for applications in on-grid systems have been designed, developed, manufactured and tested for com...



### [Solar Silicon Wafer Size M0 M2 G1 M6 M10 G12 and ...](#)

Geometric diagram of square silicon wafer  
Geometric diagram of quasi-square silicon wafer  
Large-size silicon technology refers to the use of ...

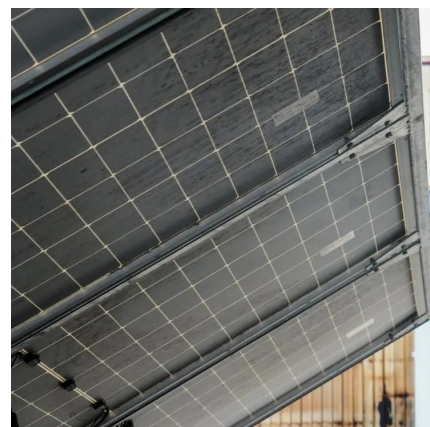


### [Solar Panel Size And Weight: A Comprehensive Guide](#)

When considering residential solar panels, typical configurations consist of 60 cells measuring approximately 3.25 feet by 5.5 feet. These ...

### [Solar Panels Sizes and Weights \(All Sizes\)](#)

The weight of a solar panel per unit is an important consideration when deciding which size is best for your home, which we will discuss further in a later section.



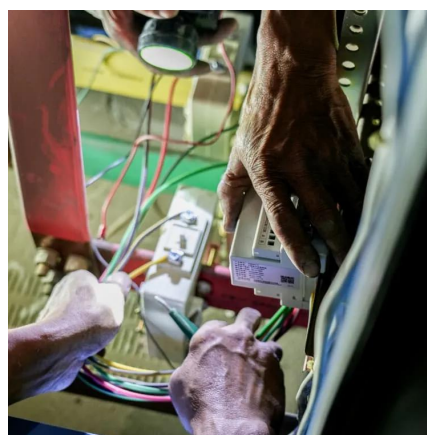


### [59 Solar PV Power Calculations With Examples Provided](#)

Learn the 59 essential solar calculations and examples for PV design, from system sizing to performance analysis. Empower your solar planning or ...

### [Standard Solar Panel Sizes And Wattages \(100W ...](#)

This is the typical classification of solar panel sizes (based on the solar cell size). It's a bit theoretical and quite useless for most calculations. The only useful ...

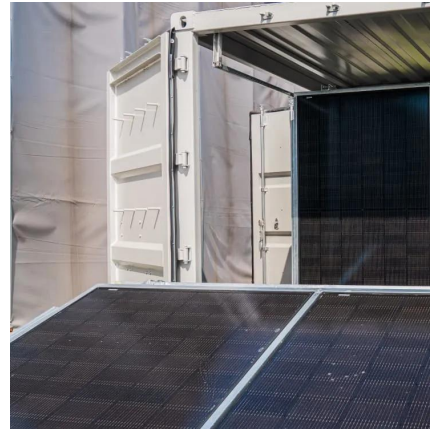


### **2022 product catalogue-A**

As of September 30, 2021, JinkoSolar has delivered more than 80GW solar panels globally, which makes JinkoSolar the world's largest photovoltaic module manufacturer in terms of cumulative ...

### [Understanding the Composition of a Solar Cell](#)

A photovoltaic cell is a p-n junction on a thin, flat wafer. A p-n junction is an intersection between adjacent layers of p-type and n-type ...



### Solar panel size and weight: everything you need to know

To calculate the total weight of your solar panels, you can multiply the number of panels by their individual weight, then add the estimated weight of your mounting equipment ...



### **Solar Wafer M12 M10 M9 M6 G1 M4 M2**

From year 2018 to 2019, G1 was inaugurated to the market and adopted by some solar cell manufacturers. Time to year 2019, M6 p-Type mono wafers (223mm diameter) was ...



### **How Much Do Solar Panels Weigh? A Complete Guide To Solar Panels Weight**

In general, residential solar panels can weigh as low as 35 lbs (kg) and as high as 50 lbs (in kg). On average, most residential solar panels weigh around 40 lbs. The exact ...







### [How much does a solar cell weigh? , NenPower](#)

The weight of a solar cell typically ranges between 250 grams to 350 grams for standard silicon-based panels, although it can be affected by ...

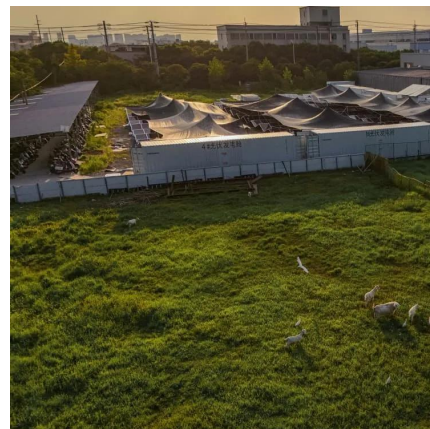


### **How Much Do Solar Panels Weigh? 2025 Accurate Top Advice**

Photovoltaic Panel System (PV Cells) Typically, the average weight of a photovoltaic panel (also known as a thin-film panel) is 40 pounds but may range from 33 to 55 ...

### [Hanwha Q CELLS Data sheet QPRO-G3 255-265](#)

Polycrystalline solar module The new Q.PRO-G3 is the reliable evergreen for all applications. The third module generation from Q CELLS has been optimised across the board: improved output ...



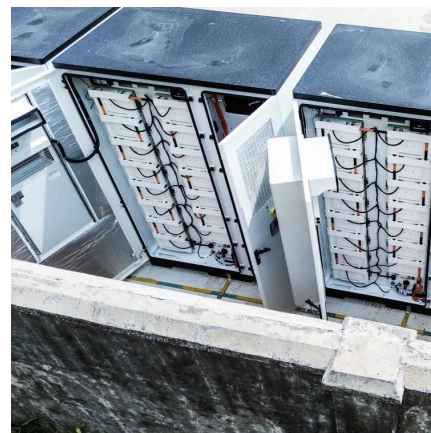
### **Composition of typical crystalline silicon solar panels ...**

Concentrating photovoltaic (CPV) technology is a promising approach for collecting solar energy and converting it into electricity through photovoltaic ...



## Solar modules component weights?

Here are the approximate component weights of a new generation n-type PV module: The weight of the solar cell is the most significant factor in the total ...



## Contact Us

---

For catalog requests, pricing, or partnerships, please visit:  
<https://bringmethehorizon.eu>