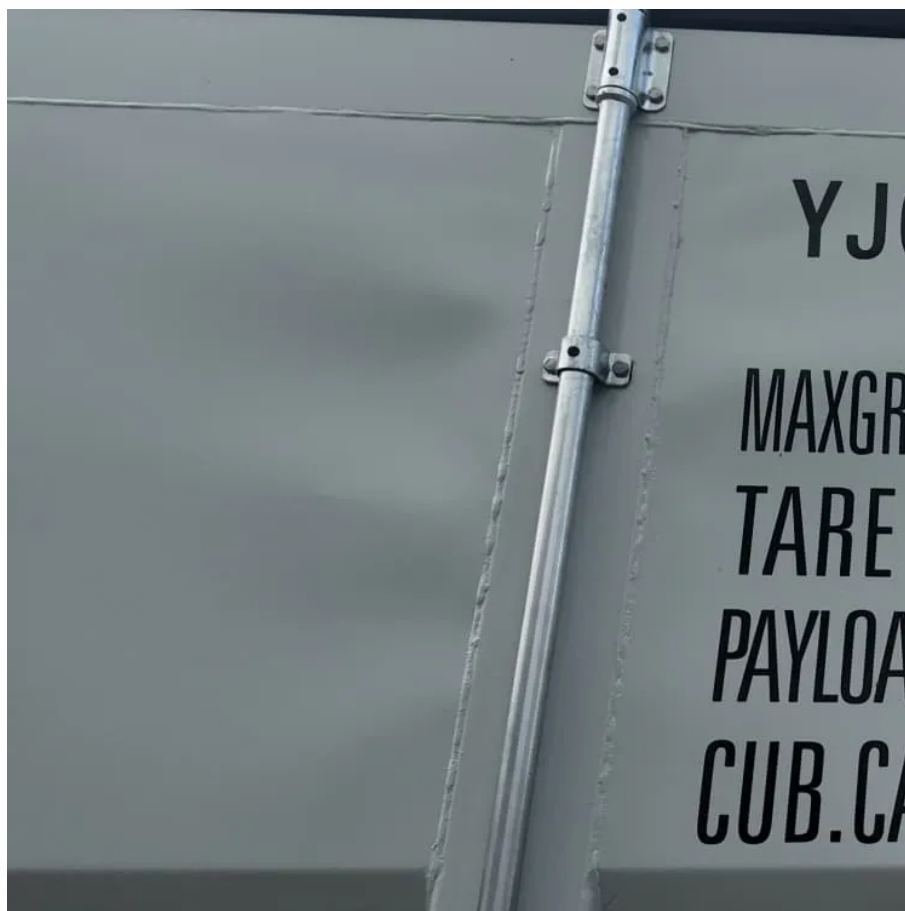




**SolarMax Pro Energy Storage Systems**

## **Outdoor power split type**





## Overview

---

What is a split type air conditioner?

A split type air conditioner consists of two separate units: the indoor unit and the outdoor unit. The indoor unit contains the evaporator coil, the fan, and the air filter, while the outdoor unit houses the condenser coil, the compressor, and the expansion valve. These components work together to cool the air and circulate it throughout the room.

What is the difference between indoor and outdoor split AC?

The indoor unit of the split AC is installed inside the room that is to be air conditioned or cooled while the outdoor unit is installed outside the room in open space where the unit can be installed and maintained easily. Apart from these two major parts there is copper tubing connecting the indoor and the outdoor units.

What is the outdoor unit of a split AC system?

The outdoor unit of a split AC system consists of several components, including a compressor, a condenser, and an expansion valve. The compressor is responsible for compressing the refrigerant, which increases its temperature and pressure. The condenser is responsible for removing heat from the refrigerant and transferring it to the outdoor air.

How does a mini split outdoor unit work?

Electrical wiring and a drain tube are often bundled with them. An electrical service line must be run from the main breaker panel in the building to the mini split outdoor unit. This provides all the power needed to run both components of the system.

What type of condenser does a split air conditioner use?

The condenser used in the outdoor unit of split air conditioners is the coiled copper tubing with one or more rows depending on the size of the air



conditioning unit and the compressor. Greater the tonnage of the air conditioner and the compressor more are the coil turns and rows.

What is a multisplit wiring connection?

Multisplit wiring connection: This type of wiring connection is used in systems where multiple indoor units are connected to a single outdoor unit. Each indoor unit has its own set of wiring connections, and these connections are then connected to the outdoor unit.



## Outdoor power split type

---

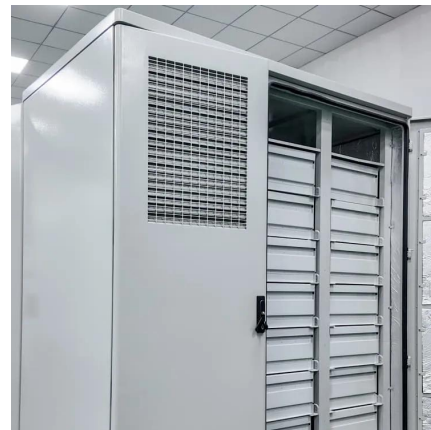


### [SYSPLIT OUTDOOR Split Systems : Systemair](#)

Universal outdoor unit series can be combined with SYSPLIT CASSETTE, CEILING, DUCT and AHU Kit. The robust and reliable structure allows a wide range of operations even under harsh ...

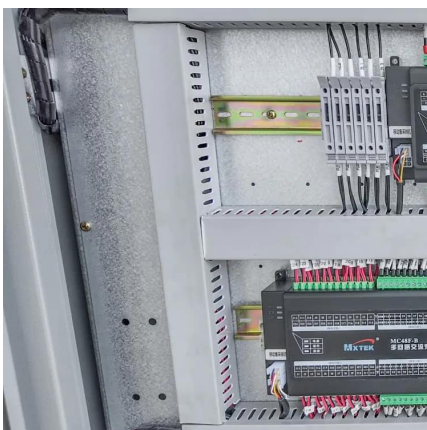
### **AB??????(2)**

For specific information on the type of gas and the amount, please refer to the relevant label on the unit itself or the "Owner's Manual - Product Fiche " in the packaging of the outdoor unit.



### [split ac wiring diagram indoor outdoor single phase](#)

single phase split ac indoor outdoor wiring diagram. An air conditioner is a system or a machine that treats air in a defined usually enclosed area via a ref



### [How to Connect a Split AC: A Complete Diagram and ...](#)

Learn how to connect a split AC with a detailed diagram and step-by-step instructions. This



article provides a clear visual representation of the ...

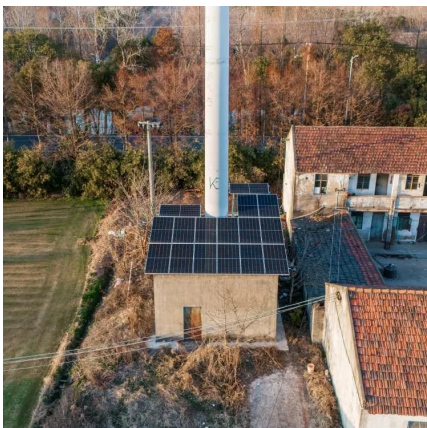


## How Does the Outdoor Unit of a Split AC Work? 2023 Guide

The outdoor unit of a split AC system works by using a refrigerant to absorb heat from your home's indoor air and then releasing it to the outdoor air. The process starts with the ...

## Split Condensers , Outdoor Split Air Conditioner (AC) Units

Find a comprehensive catalog of split condensers and outdoor split air conditioner units from global manufacturers of HVAC products and systems. Get detailed technical specifications, ...



## [A Guide to Split Type Air Conditioner Wiring Diagrams](#)

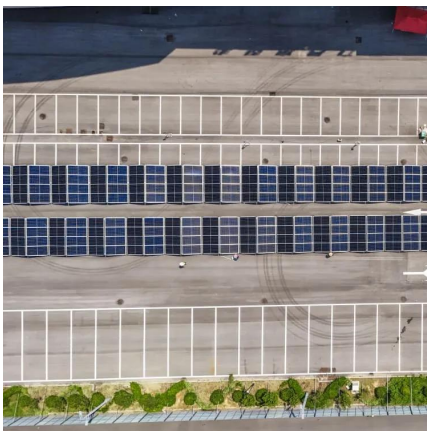
A split type air conditioner consists of two separate units: the indoor unit and the outdoor unit. The indoor unit contains the evaporator coil, the fan, and the air filter, while the outdoor unit houses ...





## [Mini Split Wiring Requirements and Electrical Diagram](#)

Mini-split wires are used to connect the outdoor compressor unit with the indoor evaporator unit, delivering electricity and control signals. For most ductless mini-splits, the ...



## [A Complete Guide to the Wiring Diagram of an AC ...](#)

An AC split system, also known as a split air conditioner, is a type of air conditioning system that consists of two main parts: an outdoor unit and an ...

## [Parts of Split Air Conditioners: Outdoor Unit](#)

There are two main parts of the split AC: the indoor unit and the outdoor unit. Apart from these two major parts there is copper tubing connecting the indoor and the outdoor units.



## [Parts of Split Air Conditioners: Outdoor Unit](#)

There are two main parts of the split AC: the indoor unit and the outdoor unit. Apart from these two major parts there is copper tubing connecting the indoor ...



## Understanding What is a Split Air Conditioning System

A split-type air conditioner consists of two main parts - an outdoor compressor/condenser unit and a separate indoor unit with an evaporator coil ...



## **Understanding the Split Air Conditioner Outdoor Unit: A Complete ...**

A key component that often goes unnoticed--but plays a vital role--is the split air conditioner outdoor unit. In this article, we will dive deep into what this unit is, how it works, what it ...

## **Split Type Aircon at Best Prices**

Discover energy-saving split type aircon at Anson's. Shop top brands for superior cooling and ultimate comfort in your home or office. Enjoy next-day delivery!





## Mini split outdoor units for high-efficiency cooling - ...

The Cooper& Hunter outdoor unit is essential to any mini split system, delivering dependable cooling and heating for residential spaces. Designed for longevity, these units endure harsh ...

## Split AC Outdoor Unit Installation Guide: Simplified Steps for ...

Installing a split AC outdoor unit involves connecting the electrical and refrigerant lines. This guide provides step-by-step instructions to ensure a successful installation process.



## Split/Multi-Split Type Air Conditioners

Connects up to five indoor units to a single outdoor unit. Installs a complete air conditioning system to multiple zone interior spaces with no need for ductwork.

## Mini Split Power Requirements (With Wire Size and Breaker Size)

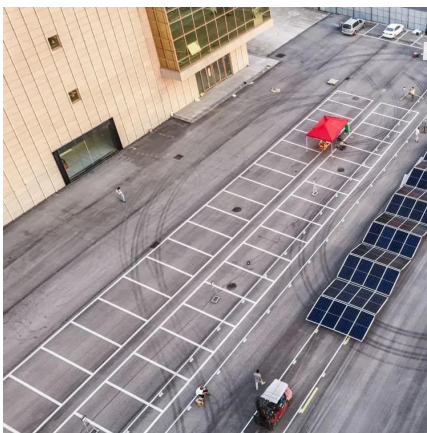
Mini splits are powered by electricity, so there is the need to extend an electric service line to the area where the outdoor component will be located. This article focuses on ...





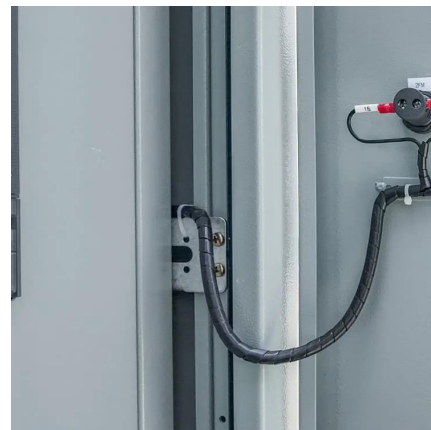
### [Amazon : Disconnect Box For Mini Split](#)

Amazon : disconnect box for mini splitSURAIELEC Fused 60 Amp AC Disconnect Box Outdoor, Waterproof Metal Enclosure with Pull-Out Switch, AC Disconnect for Home HVAC & ...



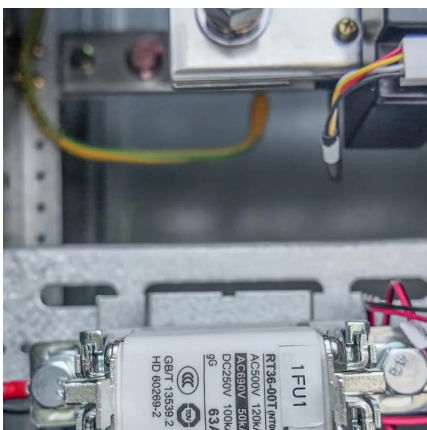
### **Mini split outdoor units for high-efficiency cooling - ...**

The Cooper& Hunter outdoor unit is essential to any mini split system, delivering dependable cooling and heating for residential spaces. Designed for longevity, ...



### [Split Condensers , Outdoor Split Air Conditioner \(AC\) ...](#)

Find a comprehensive catalog of split condensers and outdoor split air conditioner units from global manufacturers of HVAC products and systems. Get detailed ...





### KOLIN KFS-40DAG1M-O 4.0HP Multi-Split Inverter ...

4.0HP Multi-Split Inverter Outdoor Flex Match Series III Nominal Capacity 4.0 hp Cooling Capacity 37,982 kJ/h Power Supply 1 PH / 208 ~ 230 V / 60 Hz Rated ...



### **Mini Split Power Requirements (With Wire Size and Breaker Size)**

The outdoor unit of a split AC system works by using a refrigerant to absorb heat from your home's indoor air and then releasing it to the outdoor air. The process starts with the ...

## **Contact Us**

---

For catalog requests, pricing, or partnerships, please visit:  
<https://bringmethehorizon.eu>