



SolarMax Pro Energy Storage Systems

Outdoor Base Station Battery Standards





Overview

Which battery is best for telecom base station backup power?

Among various battery technologies, Lithium Iron Phosphate (LiFePO₄) batteries stand out as the ideal choice for telecom base station backup power due to their high safety, long lifespan, and excellent thermal stability.

What makes a telecom battery pack compatible with a base station?

Compatibility and Installation Voltage Compatibility: 48V is the standard voltage for telecom base stations, so the battery pack's output voltage must align with base station equipment requirements. Modular Design: A modular structure simplifies installation, maintenance, and scalability.

How do you protect a telecom base station?

Backup power systems in telecom base stations often operate for extended periods, making thermal management critical. Key suggestions include:
Cooling System: Install fans or heat sinks inside the battery pack to ensure efficient heat dissipation.

What are battery test standards?

Battery test standards cover several categories like characterisation tests and safety tests. Within these sections a multitude of topics are found that are covered by many standards but not with the same test approach and conditions. Compare battery tests easily thanks to our comparative tables. Go to the tables about test conditions.

What is a battery energy storage system?

Battery energy storage systems (BESS) stabilize the electrical grid, ensuring a steady flow of power to homes and businesses regardless of fluctuations from varied energy sources or other disruptions. However, fires at some BESS installations have caused concern in communities considering BESS as a method to support their grids.



What is a wide temperature range LiFePO₄ battery?

This translates to lower replacement frequency and maintenance costs. Wide Temperature Range LiFePO₄ batteries operate reliably in temperatures ranging from -20°C to 60°C, making them suitable for the diverse and often extreme environments of telecom base stations.



Outdoor Base Station Battery Standards



What Are the Critical Aspects of Telecom Base Station Backup ...

Critical aspects include battery chemistry, capacity, cycle life, safety features, thermal management, and intelligent battery management systems. These factors collectively ...

DIB-R5 , Hytera South Africa

The Outdoor base station has a maintenance-free, space-saving design and can be installed on walls, antenna masts or in tunnels. Thanks to its market-leading low power consumption and ...



[Use of Batteries in the Telecommunications Industry](#)

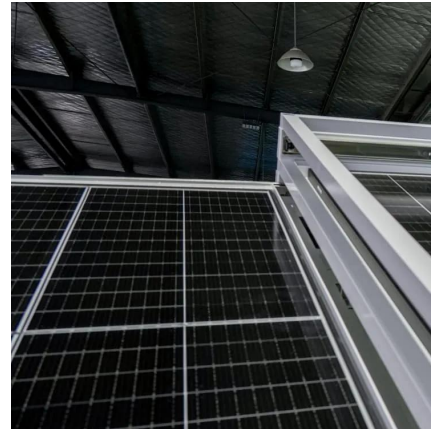
The Alliance for Telecommunications Industry Solutions is an organization that develops standards and solutions for the ICT (Information and Communications Technology) industry.

[Base Power Battery Specifications , Compare Models](#)

Compare Base Power's home battery systems - from our streamlined 20kWh wall-mount to our



advanced 50kWh ground-mount solution. View complete technical specifications.

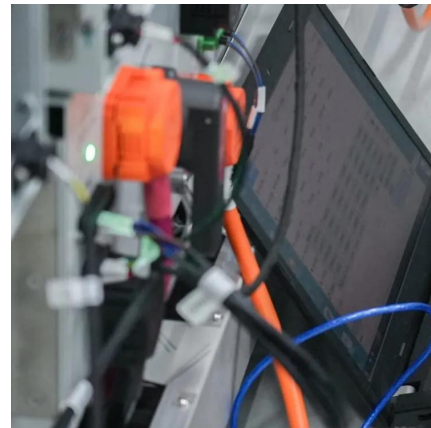


Types of Base Station Battery Cabinets

The Nokia lightRadio(TM) 9712 Outdoor Base Station is multi-standard base station designed to support 2G-GSM, and/or 3G-WCDMA and/or 4G-LTE. The base station offers flexibility to ...

DAMM TetraFlex Outdoor System

With its IP65 protection the DAMM TetraFlex Outdoor Base Station is ideal for installation in harsh environments. A compact design enables direct mounting on antenna masts, buildings and ...



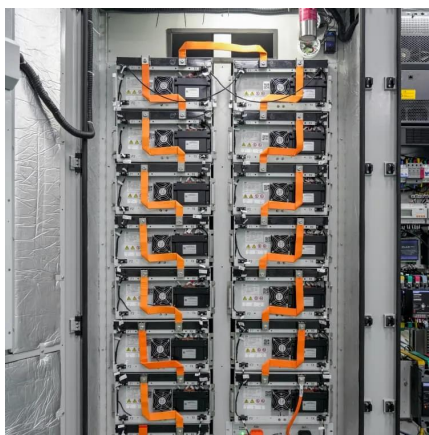
About the Wyze Base Station

Unlike other Wyze cameras, your Wyze Cam Outdoor must be connected to a Base Station to work. This article explains why. More Reliable Range Without a Wyze Base ...



[Telecom Base Station Backup Power Solution: Design ...](#)

The battery pack should comply with international safety standards such as UL, CE, and IEC to ensure safe use in telecom base stations. ...



How to Select the Best ESTEL Battery Backup for Base Stations

Choose the best telecom battery backup systems by evaluating capacity, battery type, environmental adaptability, maintenance, and scalability for base stations.

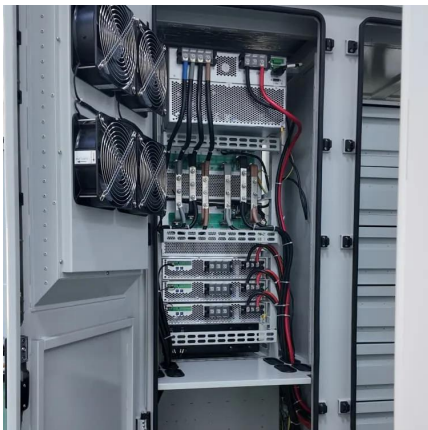
Thermal management of standby battery for outdoor base station ...

Introduction With the development of information and communication technology, the number of outdoor base stations gradually increased. Under normal circumstances, the ...



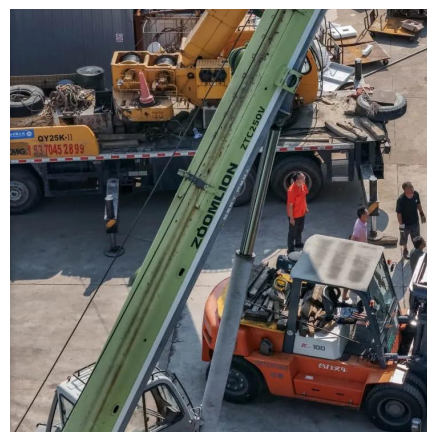
[Base Power Battery Specifications . Compare Models](#)

Compare Base Power's home battery systems - from our streamlined 20kWh wall-mount to our advanced 50kWh ground-mount solution. View complete ...



Datacenter/IDC/Power grid/UPS/EPS- Tianneng Group

Battery for Telecom Tianneng provides a variety of backup power solutions for the communication field, and it provides reliable back up power supply for base stations accessing network ...



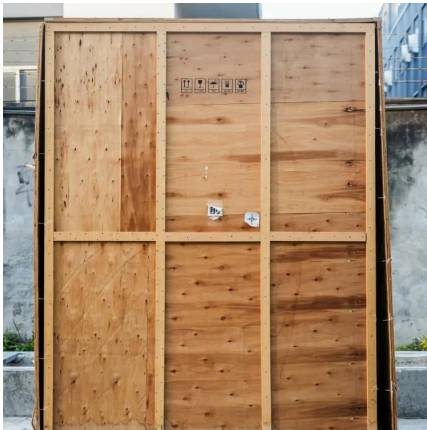
Hytera DIB-R5 Outdoor Base Station, National Wireless

The Hytera DIB-R5 outdoor TETRA base station is robust and reliable, space-saving, and uses market leading energy efficiency technology to reduce organisation operating costs.

Outdoor Base Station Cabinet

High quality Outdoor Base Station Cabinet from China, China's leading BTS outdoor cabinet product, with strict quality control outdoor data cabinet factories, producing high quality ...





Understanding Backup Battery Requirements for ...

Telecom base stations require reliable backup power to ensure uninterrupted communication services. Selecting the right backup battery is ...

2018 Title Contents

In layman's terms, a standard provides minimum requirements and/or instructions in agreement within the industry for common reference. Common standards in the battery room include ...



Wyze Cam Outdoor Base Station

This replacement base station unit is compatible with Wyze Cam Outdoor v1/v2. With 1 base station, you may pair up to 4 add-on cameras. Note: Cables are not included. You may find ...

Which Battery Is Best for Outdoor Power Stations?

Common battery types include IMR (Lithium Manganese Oxide), IFR (Lithium Iron Phosphate), and ICR (Lithium Cobalt Oxide). Each battery type has unique features in terms of ...



Battery Energy Storage Systems: Main Considerations for Safe

This webpage includes information from first responder and industry guidance as well as background information on battery energy storage systems (challenges & fires), BESS ...



Telecom Base Station Backup Power Solution: Design Guide for ...

The battery pack should comply with international safety standards such as UL, CE, and IEC to ensure safe use in telecom base stations. Additionally, it should meet ...



[What Powers Telecom Base Stations During Outages?](#)

Telecom batteries for base stations are backup power systems using valve-regulated lead-acid (VRLA) or lithium-ion batteries. They ensure uninterrupted connectivity ...





Understanding Backup Battery Requirements for Telecom Base Stations

Telecom base stations require reliable backup power to ensure uninterrupted communication services. Selecting the right backup battery is crucial for network stability and ...



[Battery Sizing Considerations IEEE 2020](#)

Introduction to Switchgear What is Switchgear? The combination of electrical disconnect switches, relays, lighting, controls, fuses or circuit breakers used to control, protect and isolate electrical ...

[What is a base station energy storage battery?](#)

A base station energy storage battery is a crucial component of telecommunication infrastructure, designed to improve the efficiency and ...



Thermal management of standby battery for outdoor base station ...

Accepted Manuscript Thermal management of standby battery for outdoor base station based on the semiconductor thermoelectric device and phase change materials Wenji Song, Fanfei Bai, ...



Contact Us

For catalog requests, pricing, or partnerships, please visit:
<https://bringmethehorizon.eu>