

Mobile power box suitable for explosion-proof market





Overview

What is an explosion-proof junction box?

Explosion-Proof (Ex d) Junction Boxes Explosion-proof junction boxes are constructed with flame-arresting materials that help cool down and contain an explosion within the enclosure. This prevents flames or sparks from escaping and igniting the surrounding atmosphere, making them ideal for areas with a potential for explosions.

What is a high Protection rated junction box?

High Protection Rating: Rated for use in areas with explosive gases and dust. This ensures that the junction boxes can operate safely in environments prone to hazardous substances, providing peace of mind to operators and workers.

What are ex Junction and terminal boxes?

Ex junction and terminal boxes are essential components for making safe electrical connections in environments where explosive gases or dust may be present. In such industrial settings, electrical safety is critical, and these specialized enclosures provide a secure and compliant solution for installations in hazardous areas.

What types of electrical connections do ex terminal boxes support?

Ex terminal boxes support a variety of electrical connection types: Power distribution. Control signal wiring. Instrumentation connections. Grounding and bonding circuits. They are often used to connect motors, lighting systems, sensors, pumps, and control panels in hazardous zones.

What is an increased safety junction box?

Increased safety junction boxes are designed to prevent the occurrence of arcs, sparks, and hot surfaces within the enclosure. They are ideal for areas where explosive atmospheres are less likely but still possible.



What are the safety requirements for ex terminal boxes?

Proper terminal box selection and installation are critical to maintaining the explosion protection of the overall electrical system. All Ex terminal boxes must be tested and certified according to applicable safety standards. This includes: ATEX Directive 2014/34/EU. IECEx Scheme.



Mobile power box suitable for explosion-proof market



Kleev's Comprehensive Explosion-Proof Enclosure Solutions

Kleev's explosion-proof enclosures are meticulously engineered to house various types of electrical and electronic equipment. These enclosures are designed not only to contain internal ...

12WAY Portable industrial explosion-proof mobile socket box

Tax excluded, add at checkout if applicable
12WAY Portable industrial explosion-proof mobile socket box
Construction site distribution box
Plastic power box
Rainproof box



Explosion Proof Junction Box Singapore , LUMENEX ASIA PTE ...

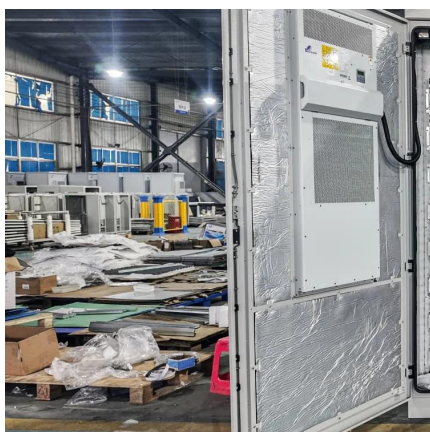
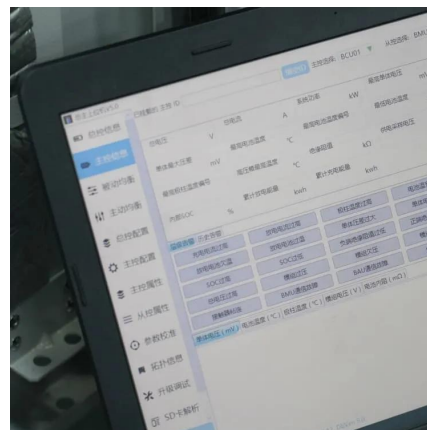
Our explosion-proof junction boxes in Singapore are made from die-cast aluminium, GRP, and stainless steel, making them suitable for use in any hazardous areas, particularly in the ...

[Explosion Proof Enclosure Comprehensive Guide](#)

Explosion-proof enclosure 1) What is an explosion-proof enclosure? "Explosion-proof



enclosure is an enclosure that will prevent the ingress of any ...

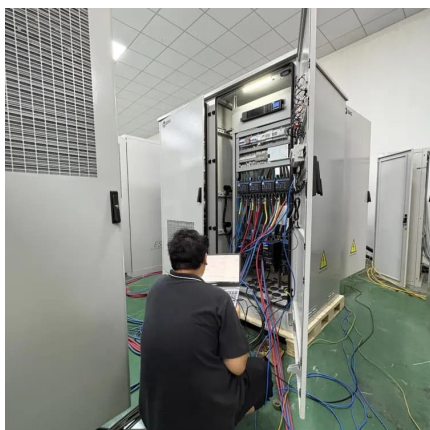


BXC-T series explosion-proof mobile maintenance power socket box ...

By combining multiple explosion-proof circuit breakers or power (lighting) distribution boxes and several explosion-proof junction boxes, the voltage can be 380V.

[Kleev's Comprehensive Explosion-Proof Enclosure ...](#)

Kleev's explosion-proof enclosures are meticulously engineered to house various types of electrical and electronic equipment. These enclosures are designed ...



Explosion-Proof Distribution Boxes & Panels Manufacturer

The explosion-proof distribution box safely delivers power in hazardous zones (oil, gas, chemical plants) with rugged, spark-resistant casing--ATEX/IECEx, IP66 certified for reliable operation ...



Explosion Proof Power Distribution Boxes CE92

Flameproof and explosion proof, these power overhaul distribution boxes are suitable for use in hazardous areas. Main switch: Maximum current is 180A. Branch circuit: Maximum current is ...



Explosion Proof Electric Box-Ouhui Lighting

This series of products have good explosion-proof function, suitable for class II A, II B, temperature group T1-T4 explosive gas environment. It is mainly used in railway, electric ...

Explosionproof stainless steel lighting (power) ...

This series of products have good explosion-proof function, suitable for IIA, IIB, IIC explosive gas environment and various flammable and explosive sites, ...



Explosion-Proof Distribution Boxes & Panels Manufacturer

An explosion-proof distribution box is a rugged enclosure for hazardous areas, safely delivering power while preventing sparks or heat from igniting flammable surroundings. Its robust ...



Intrinsically Safe Junction Box

The CSE P Ex E Series features intrinsically safe junction box and enclosures designed to meet the requirements of power distribution and signaling. Learn ...



Explosion protective components & systems , Products , ABB

ABB's Power Electronics Products encompass a range of solutions designed for the efficient management and conversion of electrical power. Products aim to enhance efficiency, ...

[Explosion Proof Enclosures Market Research Report 2033](#)

As per our latest research, the global explosion proof enclosures market size reached USD 8.1 billion in 2024, exhibiting steady expansion driven by stringent safety regulations and ...



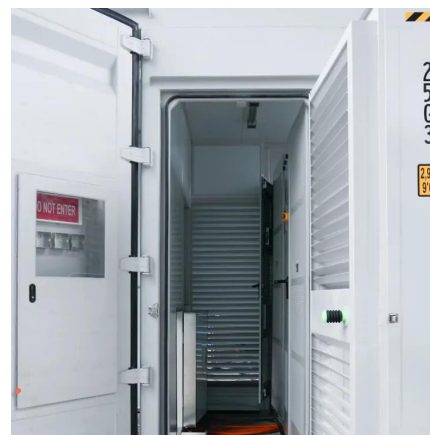


Explosion-proof Distribution Box_Explosion-proof electrical ...

For the distribution of lighting or power lines, electrical equipment on-off control or inspection and maintenance distribution. 1. It is widely used in flammable and explosive gas environment ...

Explosionproof stainless steel lighting (power) distribution box

This series of products have good explosion-proof function, suitable for IIA, IIB, IIC explosive gas environment and various flammable and explosive sites, mainly used in railway, power, ...



[A GUIDE TO EXPLOSION-PROOF JUNCTION BOXES AND ...](#)

Explore the ultimate guide to explosion-proof junction boxes, featuring the JB-01 Series from Safer-Ex. Learn about their robust construction, high protection ratings, and versatile ...

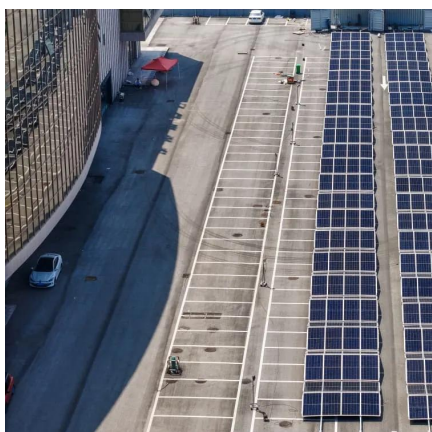
Ex junction and terminal boxes - Explosion-Proof , mlx-ex

We offer a wide selection of Ex terminal boxes to meet the needs of different industries and applications. From stainless steel enclosures for offshore use to GRP models for general ...



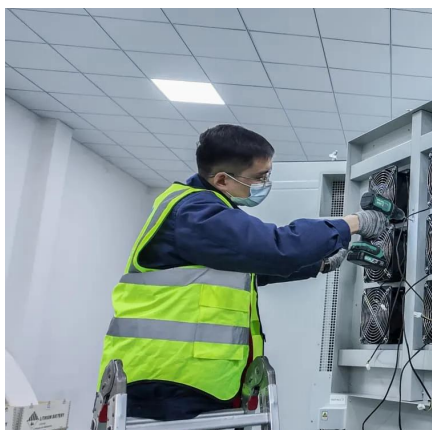
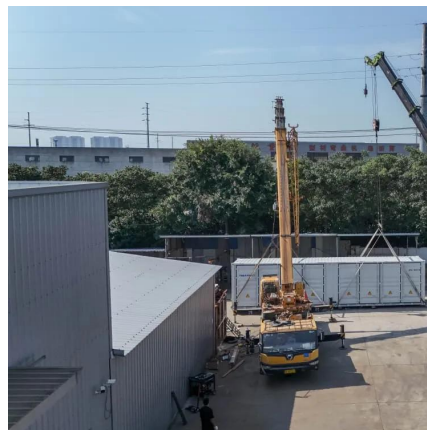
Explosion Proof Power Distribution Boxes CE92

Flameproof and explosion proof, these power overhaul distribution boxes are suitable for use in hazardous areas. Main switch: Maximum current is 180A. ...



BXC-T series explosion-proof mobile maintenance power socket ...

By combining multiple explosion-proof circuit breakers or power (lighting) distribution boxes and several explosion-proof junction boxes, the voltage can be 380V.



HOME-PROEX TECHNOLOGY

Explosion Proof Terminal Box ---- Suitable for explosive gas environment 1 zone and 2 zone; Suitable for IIA and IIB explosive gas environment; Suitable Hazardous dust environment ...



CN113611968A

The invention discloses a multifunctional explosion-proof box suitable for a power battery, which comprises a stainless steel box body, wherein an asbestos plate is filled in the stainless steel ...

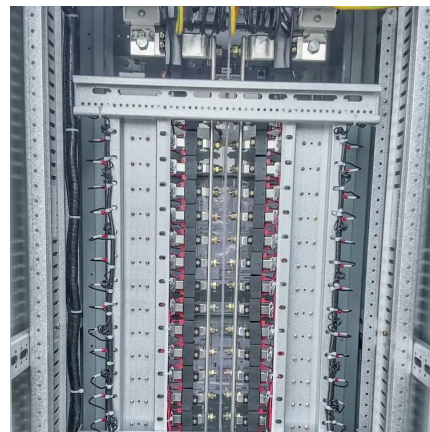


Explosion-proof Power Distribution Boxes Market Size, Demand, ...

Explore the Explosion-proof Power Distribution Boxes Market forecasted to expand from USD 1.2 billion in 2024 to USD 2.5 billion by 2033, achieving a CAGR of 9.5%. This report provides a ...

[Explosion Proof Junction Box SS316 \(Ex d\) EJB-S](#)

EJB S series Ex d enclosures are normally used in the chemical and petrochemical plants, off-shore platforms, refineries and any other industry ...



[ATEX Enclosures , ATEX Junction Boxes , Zone 1 ...](#)

Abtech BPGA explosion proof junction boxes comprise of three types of BPG enclosure in two different size - are ATEX and IECEx certified Ex'e' and are ...



Contact Us

For catalog requests, pricing, or partnerships, please visit:
<https://bringmethehorizon.eu>