



SolarMax Pro Energy Storage Systems

Mobile base station site delisting





Overview

A is a network of handheld (cell phones) in which each phone communicates with the by through a local antenna at a cellular base station (cell site). The coverage area in which service is provided is divided into a mosaic of small geographical areas called "cells", each served by a separate low power multichannel and antenna at a base station. All the cell phones within a cell communicate with the system thr.

What is a cellular base station?

A cell site, cell phone tower, cell base tower, or cellular base station is a cellular -enabled mobile device site where antennas and electronic communications equipment are placed (typically on a radio mast, tower, or other raised structure) to create a cell, or adjacent cells, in a cellular network.

What is a base station in a mobile network?

The base stations represent the radio part of the mobile network, and one base station typically contains multiple cells which operate on specific radio frequencies. The radio network is what connects a mobile phone to the mobile network.

Who owns cell sites & base stations?

The cell sites and base stations are owned by mobile network operators such as Vodafone, T-Mobile, Rogers, AT&T, Verizon etc. The base stations represent the radio part of the mobile network, and one base station typically contains multiple cells which operate on specific radio frequencies.

What is a base station called?

In 2G GSM networks, the base station is called Base Transceiver Station. The base station is called Node B in UMTS networks, eNodeB in LTE networks, and gNodeB in 5G networks. The cell sites and base stations are owned by mobile network operators such as Vodafone, T-Mobile, Rogers, AT&T, Verizon etc.

How far can a mobile base station be from a base station?



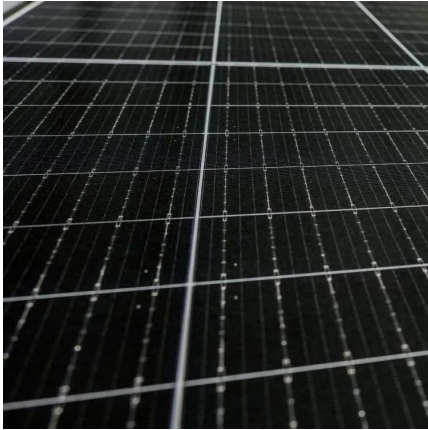
In addition, some technologies, such as GSM, have an additional absolute maximum range of 35 km (22 mi), which is imposed by technical limitations. CDMA and IDEN have no such limit defined by timing. 5G (FR2) Mobile base station: the distances between the 5G base-station is about 250–300 m, due to the use of millimetre waves.

How does a radio base station work?

The radio base station is installed at a mobile operator's site, also known as a "cell site". The electricity powers it, and this power determines how far the radio signal can travel. The higher the power, the longer the signal can travel.



Mobile base station site delisting



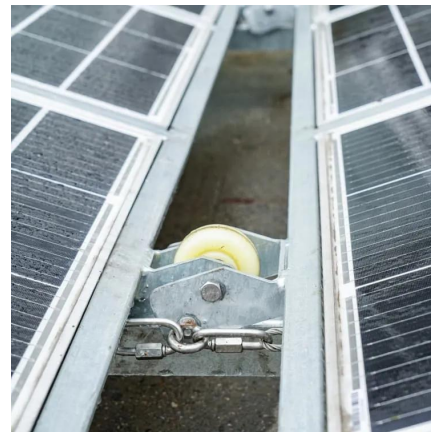
China Mobile surges on Shanghai debut, shrugging off ...

Staff members of China Mobile test the signals of the 5G base station built at an altitude of 6,500 meters at the advance camp of Mount ...

Cell site

SummaryOverviewOperationTemporary sitesEmploymentSpy agency setupOff-grid systemsCamouflage

A cellular network is a network of handheld mobile phones (cell phones) in which each phone communicates with the telephone network by radio waves through a local antenna at a cellular base station (cell site). The coverage area in which service is provided is divided into a mosaic of small geographical areas called "cells", each served by a separate low power multichannel transceiver and antenna at a base station. All the cell phones within a cell communicate with the system thr...



Cell sites and cell towers in a mobile cellular network

The radio base station is installed at a mobile operator's site, also known as a "cell site". The electricity powers it, and this power determines how far the radio signal can travel. ...



Contact :: U.S. Army Garrison Bavaria

To dial a German commercial telephone number from within the United States: Dial 011 49 and drop the first 0 of the commercial number. To dial a German commercial telephone ...



[Rules on new mobile phone base stations](#)

The Radio Frequency National Site Archive allows you to get email updates when a telco adds new information for a base station site. To subscribe to this service, go to the Radio Frequency ...



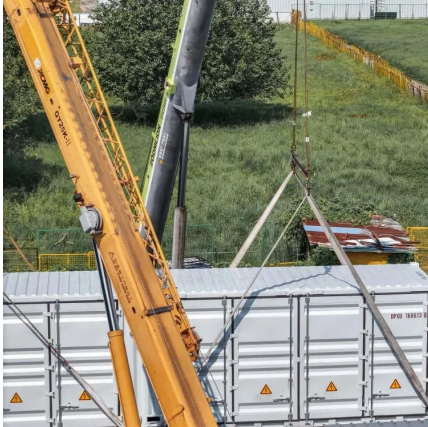
Siltation

The Joes Branch watershed encompasses an area of 0.97 square miles and is located in Baldwin County. Joes Branch flows southwest for a total stream length of 1.57 miles before its ...



B18: Mobile Phone Base Stations

Synopsis This guidance provides information for Managing Agents on the Electronic Communications Code and the management of risk where mobile base stations are located on ...



An Independent UAV-Based Mobile Base Station

We develop a prototype of a proposed mobile base station and test its operation in an outdoor environment. The experimental results provide ...



Cell site

The coverage area in which service is provided is divided into a mosaic of small geographical areas called "cells", each served by a separate low power multichannel transceiver and ...

Military Base Realignment and Closure (BRAC) Process Explained

The United States Department of Defense (DoD) undertakes a significant process known as Military Base Realignment and Closure (BRAC) to ensure its infrastructure remains ...





[How to find out where your nearest mobile phone ...](#)

Experiencing patchy unreliable reception on your mobile phone? Wondering where your nearest cell tower is and if you can improve the signal?

[Grafenwoehr \(Vilseck\), United States Army Garrison](#)

USAG Grafenwoehr commands, controls, supports, operates and enables mission and readiness of stationed and rotational units while caring for people and providing the highest ...

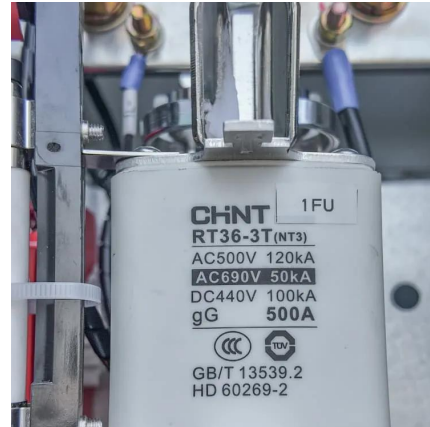


Cell Site Decommissioning Gotcha

With Sprint and T-Mobile now together, it is widely expected that several thousand cell sites will be decommissioned. We anticipate this same 'offer' being made to property owners.

Telstra

How Base Stations Operate? Mobile phones and wireless devices rely on a network of base stations and small cells that send and receive calls and provide other mobile services such as ...



Anything anyone can tell me about Grafenwoehr base in ...

Look at the classifieds in stars and stripes or whatever it is people do. Ask someone who has been on post for a while for a local mechanic that sells cars to Americans and you can get a ...



[Decommissioning Sites by Location or Name , NRC.gov](#)

This involves safely removing a facility or site from service and reducing residual radioactivity to a level that permits the license to be terminated, with the property released either for ...



[Cell sites and cell towers in a mobile cellular network](#)

This involves safely removing a facility or site from service and reducing residual radioactivity to a level that permits the license to be terminated, with the ...





DEC Proposes Delisting Majority of Lawrence Aviation Superfund Site

"The proposed delisting of a majority of the Lawrence Aviation site shows significant progress in cleanup and reuse of this former industrial facility," Commissioner Lefton said, ...



Placement Optimization of UAV-Mounted Mobile Base Stations

In terrestrial communication networks without fixed infrastructure, unmanned aerial vehicle-mounted mobile base stations (MBSs) provide an efficient solution to achieve wireless ...

[USAG Bavaria, Hohenfels , Base Overview & Info](#)

To place a call using DSN, the caller must be using a military phone on an installation. Cell phones cannot dial DSN numbers. When dialing a DSN number from a United States ...



Contact Us

For catalog requests, pricing, or partnerships, please visit:
<https://bringmethehorizon.eu>