



SolarMax Pro Energy Storage Systems

Lithium battery pack with communication function





Overview

What is a lithium-ion battery pack?

Lithium-Ion battery packs are the preferred power solution for today's portable equipment. Portable device applications typically require the inclusion of power interaction functionality more than ever before.

What is lithium battery pack technique?

The technique used for assembling lithium batteries is called lithium battery pack processing, assembly, and packaging. This process can result in a single battery or a lithium battery pack connected in series or parallel, known as a PACK.

What is power sonic lithium battery management system (BMS)?

Utilizing an intelligent Battery Management System (BMS) and Bluetooth® communication, the Power Sonic Lithium Bluetooth® series ensures you can monitor your battery status and localize any potential issues from a smart phone or tablet.

How to connect a lithium battery pack?

To connect a lithium battery pack, the typical methods are connecting first in parallel and then in series, first in series and then in parallel, or mixing the parallel and series connections together. For a lithium battery pack used in pure electric buses, the connection is usually made first in parallel and then in series.

Why should you buy a lithium Bluetooth® battery?

It delivers up to 70% saving in weight, 70% saving in space, a superior cycle life and charges a lot quicker. At the heart of every Lithium Bluetooth® battery is an intelligent BMS that monitors and reacts to multiple voltage, current, and temperature events to maximize battery life, performance, and safety.

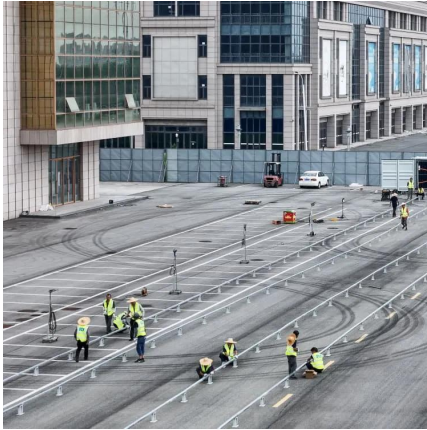


What is a cell-con smart battery pack?

Cell-Con will provide a custom Lithium-Ion smart battery pack solution that utilizes SMBus / CANbus / I2C for communications between the battery, host device, and charger. Smart battery assemblies include an electronic circuit with a microprocessor to provide fuel gauging functionality (available run time / capacity).



Lithium battery pack with communication function



[CAN Bus: Battery Management and Communications ...](#)

A battery management system based on CAN Bus protocols helps manage the functionality of each battery cell contained in the battery pack. The battery ...

Customized Lithium Battery Pack with Communication Function ...

Customized Lithium Battery Pack with Communication Function for Power Traction, Find Details and Price about Custom Lithium Power Pack Lithium Power Pack from Customized Lithium ...



8S to 24S Li ion Lifepo4 Smart Bluetooth BMS for 60V ...

8S to 24S Li ion Lifepo4 Smart Bluetooth BMS for 60V 72V 84V battery with UART RS485 CAN communication 100A 150A 200A Constant current \$ 55.20 ...

The Complete Guide to Li-ion Battery Pack Communication: ...

The evolution from CAN bus to wireless IoT represents a revolutionary change in lithium-ion



battery pack communication technologies. Wired communication methods like the CAN bus ...



Li-Super High Quality Lithium Battery power wall design 6000 ...

We offer high-quality lifepo4 packs with 6000 cycles. In addition, the smart BMS can communicate with different brands of hybrid solar inverters.



Smart BMS 4S 12V 200A Lithium Lifepo4 Battery ...

It is an intelligent protection board scheme specially designed for 4 series battery packs of start-up battery and electric energy storage products. It is suitable for ...



JBD Smart BMS 16S 17S 20S 24S 60A 80A 100A 48V ...

JBD-SP25S003 BMS Details : JBD-SP25S003 is an intelligent protection board scheme specially designed for 7-25 series battery packs of start-up battery ...





DALY Smart 6S BMS 24V 60A with WiFi Module and CAN 485 Communication

Amazon : DALY Smart 6S BMS 24V 60A with WiFi Module and CAN 485 Communication Protection Board for Li-ion Lithium Battery Pack (Li-ion 6S 24V,60A) : Tools ...



Smart BMS 4S 12V 200A Lithium Lifepo4 Battery Management with Balance

It is an intelligent protection board scheme specially designed for 4 series battery packs of start-up battery and electric energy storage products. It is suitable for lithium batteries with different ...

8S-21S 24V 100A Smart BMS Battery Protection Board for LifePO4 Lithium

Support simultaneous multi-channel communication and rich expansion applications,such as UART/RS485/CAN Communication Function; Can be connected to ...



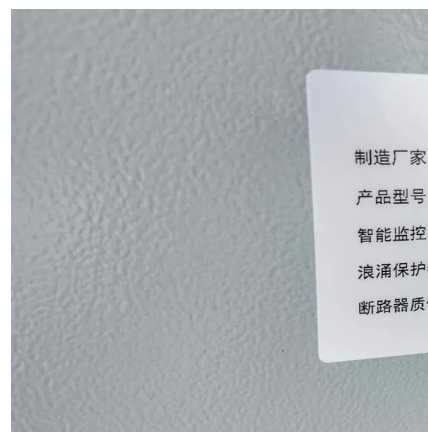
DALY Smart BMS 4S-16S 40A-500A with WiFi Module and CAN ...

Buy DALY Smart BMS 4S-16S 40A-500A with WiFi Module and CAN 485 Communication Protection Board for LifePO4 Lithium Battery Pack (Smart BMS 8S ...



[The Complete Guide to Li-ion Battery Pack Communication](#)

In the era of smart devices and new energy, lithium battery packs are no longer silent energy containers but intelligent units capable of real-time "reporting" status and ...



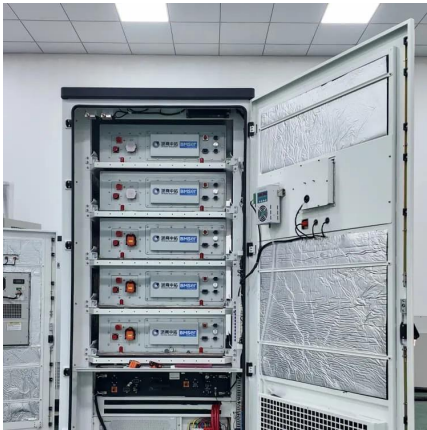
[Amazon : DALY Smart BMS 4S 12V 30A with Parallel ...](#)

Intelligent and easy cabling --- All Bms with UART + RS485 + CAN function and protocol, with Bluetooth dongle and DALY BMS app, you can check all real-time battery parameters and ...

[18650 lithium-ion battery pack with Bluetooth ...](#)

?Please mind potential fire risk and strictly follow the instruction manual for charging and storage. For disposal, please check your local authority's ...



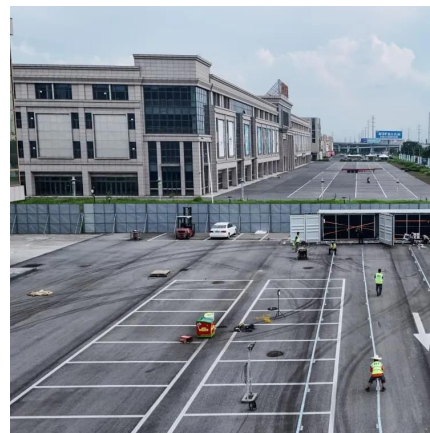


Exploring the Top Battery Communication Protocols Used Today

Battery communication protocols like CAN Bus, RS485, UART, and I2C enable real-time monitoring, safety, and efficient lithium battery management.

4S or 3S 12V Lifepo4 or lithium battery Smart

4S or 3S 12V Lifepo4 or lithium battery Smart Bluetooth bms with UART CAN and RS485 Communication 20A 30A 50A 80A Constant current \$ 35.20 - \$ 46.60



DALY Smart BMS 4S-16S 40A-500A with WiFi Module and CAN ...

Buy DALY Smart BMS 4S-16S 40A-500A with WiFi Module and CAN 485 Communication Protection Board for LifePO4 Lithium Battery Pack (Smart BMS 16S ...

8S to 24S Li ion Lifepo4 Smart Bluetooth BMS for 60V 72V 84V battery

8S to 24S Li ion Lifepo4 Smart Bluetooth BMS for 60V 72V 84V battery with UART RS485 CAN communication 100A 150A 200A Constant current \$ 55.20 - \$ 79.20



DALY Smart 12S BMS 36V with WiFi Module and CAN 485 Communication

Amazon : DALY Smart 12S BMS 36V with WiFi Module and CAN 485 Communication Protection Board for LifePO4 Lithium Battery Pack (Lifepo4 12S ...



Lithium (LiFePO4) Bluetooth Smart Battery Series , Power Sonic

Utilizing an intelligent Battery Management System (BMS) and Bluetooth® communication, the Power Sonic Lithium Bluetooth® series ensures you can monitor your battery status and ...



DALY Smart BMS 7S 24V 40A Battery Packs Parallel Module 1A ...

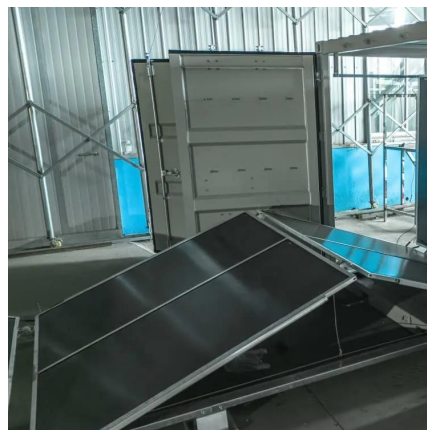
Do not connect the parallel module to the BMS before all balance lines wire each battery cell. Please connect BMS to the battery first, and then connect the parallel module to BMS. Each ...





[DALY Smart BMS 20S 60V 30A with Parallel Module ...](#)

DALY Smart BMS 20S 60V 30A with Parallel Module 1A and Smart CAN Communication Function Bluetooth BMS for 3.2V Lithium Battery Packs Home ...

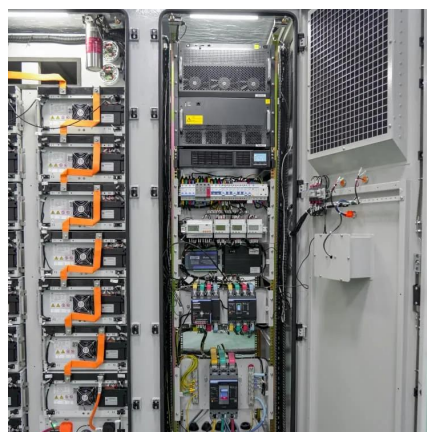


DALY Smart BMS 4S-16S 40A-500A with WiFi Module and CAN ...

Buy DALY Smart BMS 4S-16S 40A-500A with WiFi Module and CAN 485 Communication Protection Board for LifePO4 Lithium Battery Pack (Smart BMS 4S ...

[Li-Super High Quality Lithium Battery power wall ...](#)

We offer high-quality lifepo4 packs with 6000 cycles. In addition, the smart BMS can communicate with different brands of hybrid solar inverters.



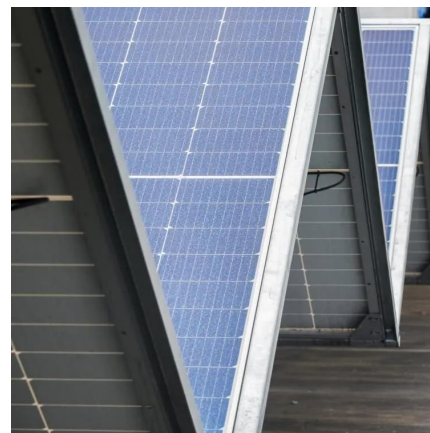
Li-ion Smart Battery Packs

Portable device applications typically require the inclusion of power interaction functionality more than ever before. Cell-Con will provide a custom Lithium-Ion smart battery pack solution that ...



DALY Smart BMS 14S 48V 30A with Parallel Module 1A and ...

Do not connect the parallel module to the BMS before all balance lines wire each battery cell. Please connect BMS to the battery first, and then connect the parallel module to ...



Contact Us

For catalog requests, pricing, or partnerships, please visit:
<https://bringmethehorizon.eu>