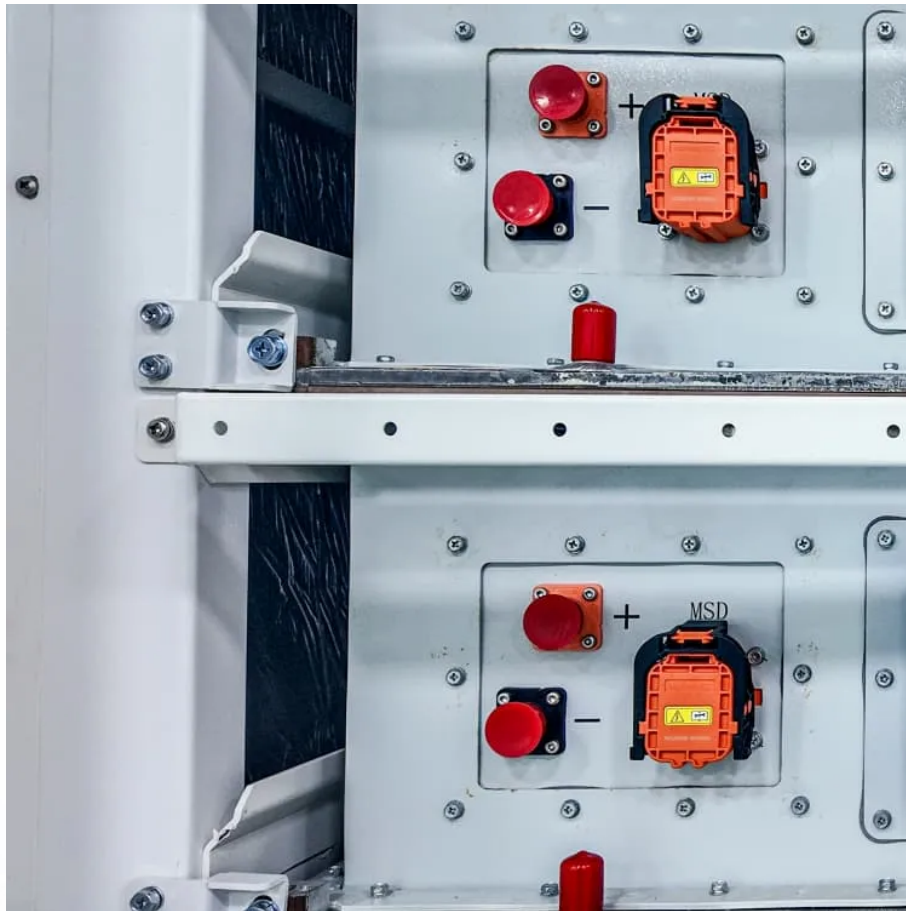




SolarMax Pro Energy Storage Systems

Lithium battery pack voltage 4V





Overview

What is a 12V lithium battery pack?

Most commonly, a 12V lithium battery pack is made up of four lithium-ion cells, each with a nominal voltage of 3.7V. This configuration allows the pack to reach a total nominal voltage of approximately 14.8V when fully charged and around 12V when discharged.

What voltage is a lithium ion battery?

A lithium-ion battery's nominal or standard voltage is nearly 3.60V per cell. Some battery manufacturers mark lithium-ion batteries as 3.70V per cell or higher. What voltage is overcharged on a lithium battery?

Overcharging means charging the lithium-ion battery beyond its fully charged voltage.

How many volts is a lithium polymer battery?

Single lithium polymer (Li-Po) cells typically have a nominal voltage of 3.7 volts. When the voltage of this type of cell is charged to 4.2 volts, it is considered fully charged. During the battery discharge process, when the voltage drops to 3.27 volts, the battery is considered fully discharged.

What is the difference between a lithium ion battery and a battery pack?

While a lithium-ion cell is a single battery unit, a battery pack combines multiple cells in series or parallel. The typical lifespan of lithium-ion batteries is around 300-1000 charge cycles. Voltage vs. Charging Relations The relation between voltage and the battery's charge is often overlooked, but it's important.

How to calculate lithium cell count in a battery pack?

To calculate lithium cell count in a battery pack, use the formula: Total Voltage = Number of Cells x Nominal Voltage of Each Cell. 1. Understanding



nominal voltage of lithium cells. 2. Identifying required total voltage for the application. 3. Considering parallel connections for capacity. 4.

What is the SOC voltage chart for lithium batteries?

The SoC voltage chart for lithium batteries shows the voltage values with respect to SoC percentage. A Li-ion cell when fully charged at 100%SoC can have nearly 4.2V. As it starts to discharge itself, the voltage decreases, and the voltage remains to be 3.7V when the battery is at half charge, ie, 50%SoC.



Lithium battery pack voltage 4V

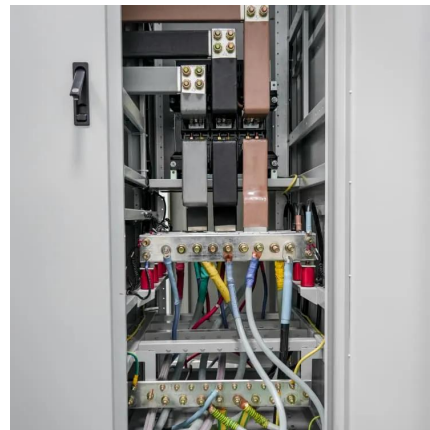


How Many Cells in a Lithium Battery Pack? A Complete Guide to ...

Most commonly, a 12V lithium battery pack is made up of four lithium-ion cells, each with a nominal voltage of 3.7V. This configuration allows the pack to reach a total ...

EBL 7.4V 2200mAh Li-ion Rechargeable Batteries Replacement ...

Long Lasting Large Capacity Batteries: EBL 7.4V 2200mAh rechargeable lithium batteries, long lasting lithium batteries, these cells can provide approximately the same and steady voltage ...



Voltages , Li-Ion & LiPoly Batteries , Adafruit Learning System

For example, almost all lithium polymer batteries are 3.7V or 4.2V batteries. What this means is that the maximum voltage of the cell is 4.2v and that the "nominal" (average) ...

[Rechargeable li ion 18650 battery 7.4 v 4400mah ...](#)

Li ion battery pack 7.4 v 4400mah build by lithium ion 18650 cells 2s2p. Cell voltage with



3.7 volt. and 2 18650 in serie to get 7.4 volt. 2 in parallel to get ...

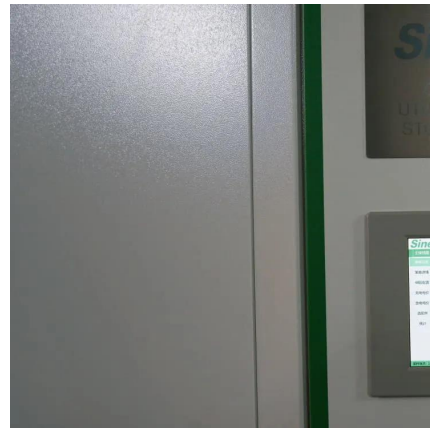


What Should Battery Pack Voltage Be When Fully Charged?

For most common battery types, such as lead-acid and lithium-ion, fully charged voltages vary: lead-acid batteries typically read 12.6V to 12.8V, while lithium-ion batteries can ...

7.4 Volt Lithium Ion Battery Pack (8800 mAh) with ...

Buy your 7.4 Volt Lithium Ion Battery Pack (8800 mAh) with Protection IC & Leads today from the #1 Online Battery Supplier. Shop for more at [onlybatteries](#) .



Lithium Ion (Li-Ion) 14.4 V Battery Packs - Mouser

Applied Filters: Power Batteries Battery Packs
Battery Chemistry = Lithium Ion (Li-Ion) Output
Voltage = 14.4 V Reset All Please modify your
search so that it will return results. To use ...



[Lithium Rechargeable Batteries - IBEX Resources](#)

You can improve the working life of a battery by setting your charge solution to switch to constant voltage at a slightly lower voltage (e.g. 4.1V) if maximum capacity isn't the primary concern.



Lithium Ion Battery Voltage Explained: Everything You Need to ...

In the discharge cycle, initially, the voltage will be 4.2V. When we continue to utilize the battery, the voltage may drop to the nominal rate of 3.7V. When used more, the ...

Lithium Ion Battery Voltage Explained: Everything You ...

In the discharge cycle, initially, the voltage will be 4.2V. When we continue to utilize the battery, the voltage may drop to the nominal rate of ...



[Lithium LiFePO4 Battery Voltage Charts For 12V, ...](#)

12V Lithium Battery Voltage Chart (1st Chart). Here we see that the 12V LiFePO4 battery state of charge ranges between 14.4V (100% charging charge) and ...



7.4 V 5000mAh Lithium Ion Battery Pack 105565-2S

Buy Ufine 7.4V 5000mAh li-ion battery pack 105565-2S. High energy density, and long battery life. Custom rechargeable li-ion battery pack supported.

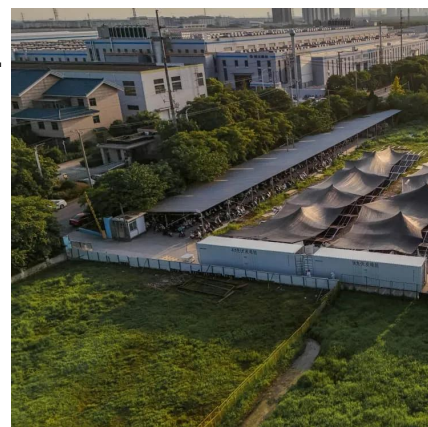


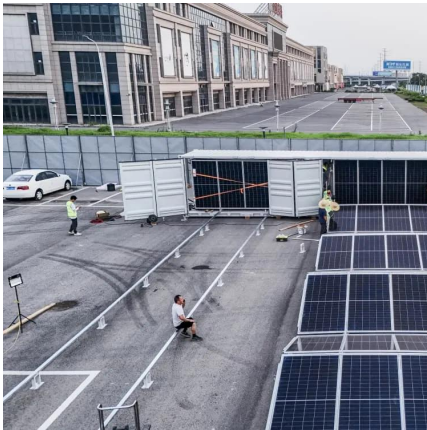
Lithium Ion 7.4V Batteries

Buy Lithium Ion 7.4V Batteries - Rechargeable. Farnell® UK offers fast quotes, same day dispatch, fast delivery, wide inventory, datasheets & technical support.

Battery pack calculator : Capacity, C-rating, ampere, charge and

Battery calculator : calculation of battery pack capacity, c-rate, run-time, charge and discharge current Onlin free battery calculator for any kind of battery : lithium, Alkaline, LiPo, Li-ION, ...



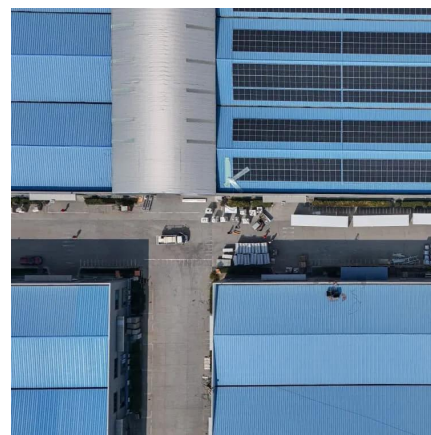


Lithium Battery Voltage Chart

The lithium battery voltage chart serves as a guide for users to keep their batteries within the recommended voltage range, ensuring optimal performance and longevity. Here is a ...

[Introduction: What Is a Lithium-Ion Battery Pack?](#)

Learn the differences between 18650, 21700, and custom lithium-ion battery packs. Understand voltages like 11.1V and 14.8V, and how to choose the right Li-ion battery pack for ...



[Ultimate Guide to Battery Voltage Chart](#)

4S Lithium Polymer Battery Pack Voltage Curve A
4S lithium polymer (Li-Po) battery is typically composed of 4 cells connected in series, with a total nominal voltage of 14.8V.

[The Ultimate Guide to Lithium Battery Packs](#)

The Ultimate Guide to Lithium Battery Packs- from how they work and key types like lithium-ion to buying tips and maintenance advice. Learn to choose the right battery pack for smartphones, ...



[Li-ion 4500mAh 4S 14.4v Battery Pack](#)

The MaxAmps 4500mAh 4s1p 14.4v Li-ion (Lithium-ion) battery is assembled in the USA for drones, UAV, VTOL, aerospace, and robotics applications. ...



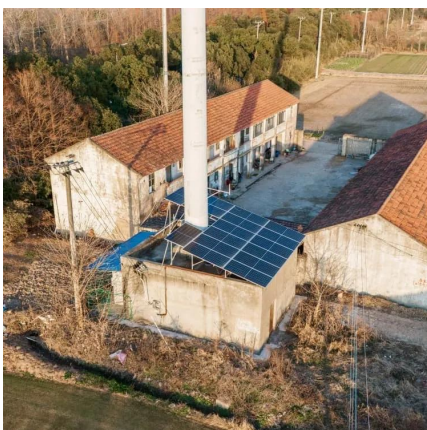
[Battery Pack Calculator , Good Calculators](#)

Here's a useful battery pack calculator for calculating the parameters of battery packs, including lithium-ion batteries. Use it to know the voltage, capacity, energy, and maximum discharge ...



[Ultimate Guide to Lithium-Ion Battery Voltage Chart](#)

Lithium-ion battery voltage chart represents the state of charge (SoC) based on different voltages. This Jackery guide gives a detailed overview of lithium-ion batteries, their ...





Voltages , Li-Ion & LiPoly Batteries , Adafruit Learning ...

For example, almost all lithium polymer batteries are 3.7V or 4.2V batteries. What this means is that the maximum voltage of the cell is 4.2v and ...



In Stock 2 cell pack 8.4V Lithium Ion Battery chargers ...

7.2V 7.4V li ion battery charger, 8.4V Universal AC input OEM and consumer lithium-ion battery charger for 2 cell packs, 8.4V charging voltage, ...

Contact Us

For catalog requests, pricing, or partnerships, please visit:
<https://bringmethehorizon.eu>