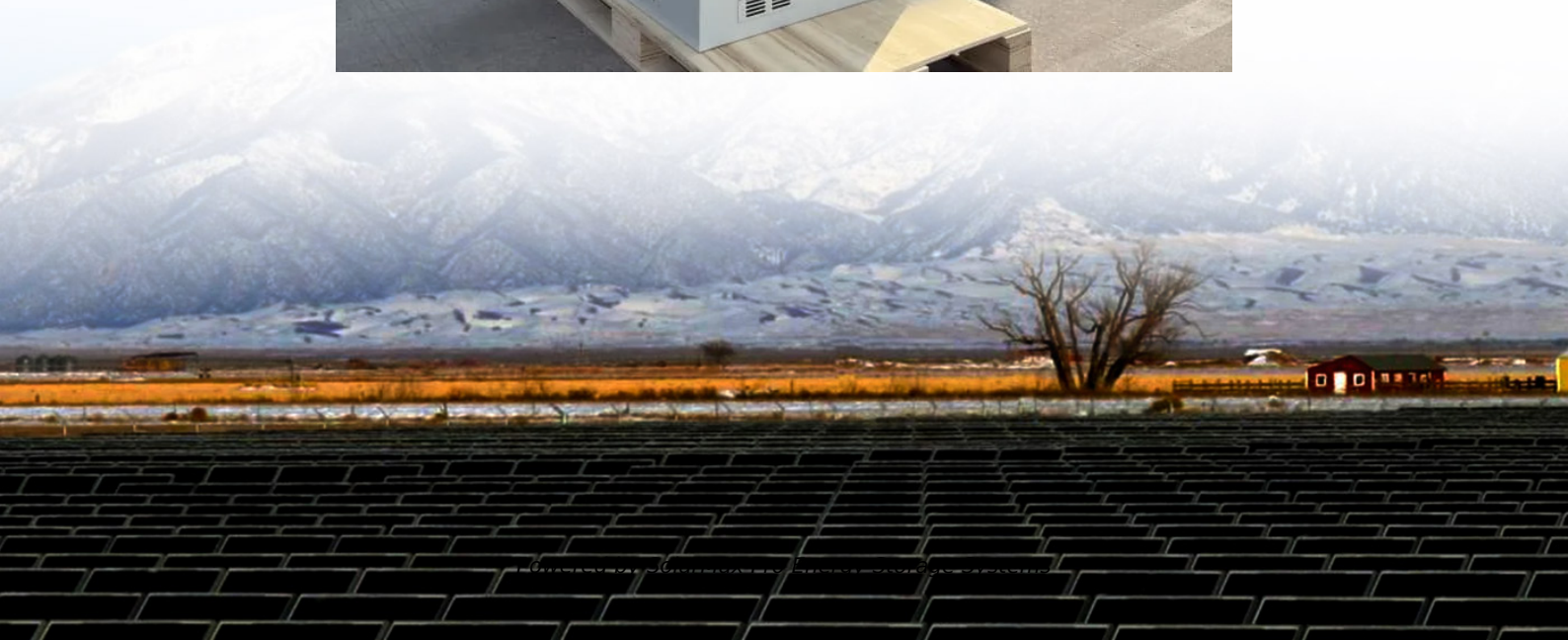




SolarMax Pro Energy Storage Systems

Lightning damage to communication base stations





Overview

Can lightning damage a telephone line?

Lightning can couple to telephone lines and RF feeders, leaving communication lines vulnerable to potential damage. With telephone and data lines, surges can occur from each line to ground or across the lines. Protection against these surges requires the use of appropriately designed surge protection devices.

What happens if lightning strikes a telecommunication network?

The extensive cabling and wiring deployed in telecommunication networks act as antennas, inadvertently capturing electromagnetic energy from lightning discharges. The breakdown of communication systems could lead to significant loss of life or property and result in various other forms of damage.

How can engineers protect telecom facilities from lightning strikes?

According to Above Ground Level Magazine, engineers can help protect telecom facilities from the dangers associated with lightning strikes using a six point plan of protection. Continue reading below to learn more about these six steps of lightning protection for telecom facilities. 1. Capture the Lightning Strike.

Are telecommunications facilities at risk of lightning strikes?

Telecommunications facilities are particularly at risk of direct lightning strikes—and the electrical surges that ensue—due to their tall stature and complex electrical makeup. However, there is a way for engineers to protect telecommunication facilities from the devastating and lasting effects of lightning damage.

Are telecommunication facilities vulnerable to direct or indirect lightning?

However, telecommunication facilities are highly vulnerable to transient overvoltage surges posed by direct or indirect lightning because of their



extensive network infrastructure and the nature of the communication medium.

Why are lightning and surge protection important for telecommunication networks?

In conclusion, systematic lightning and surge protection are imperative for the resilience and longevity of telecommunication networks. When lightning strikes, relying solely on air terminals proves insufficient in effectively safeguarding telecommunication facilities.



Lightning damage to communication base stations



The Six Point Plan to Achieving Telecom Facility Lightning

A direct hit of lightning or damage to GSM and base stations through electromagnetic surges can cause interruptions in communication networks ...

Lightning Strike Risks and Lightning Protection Measures for ...

6. Lightning Protection Effectiveness and Safety Practice has shown that small weather stations equipped with comprehensive lightning protection facilities rarely experience ...



Communication Base Station Lightning Arrestor , Huijue Group E ...

The communication base station lightning arrestor remains the frontline defense against nature's voltage spikes, yet industry reports show 23% of telecom operators still use decade-old ...

Lightning protection, earthing and surge protection of base

An effective lightning protection design for a telecommunication facility requires an integrated



approach to a number of key factors: Protection against direct



Microsoft Word

Abstract - In recent years, many suppliers of telecom equipment have reported higher than expected rates of lightning damage to Ethernet and POTS ports connected to cables located ...

Lightning Protection for Antennas, Towers, and ...

Lightning Protection for Antennas, Towers, and Structures Every year, lightning causes irreversible damage, injuring approx 1,000 people annually. Antennas ...



Lightning protection solution for telecom communication base ...

The lightning arrester for the RuTian feeder is installed at the connection between the antenna and the feeder to prevent lightning from entering the main equipment of the base ...





The Case of Lightning Protection Solutions for Electric Power ...

The results indicated that the lightning overvoltages for surges from the transmission system and switchyard were moderate while the lightning overvoltages from lightning strikes within the ...



Lightning introduction pathways and protection measures for

Once a communication base station is struck by lightning, it is easy to cause damage to communication equipment and interrupt communication signals, which will have a great ...

Communication Network GSM-Base Stations and Lightning Effect

A direct hit of lightning or damage to GSM and base stations through electromagnetic surges can cause interruptions in communication networks and damage to devices.



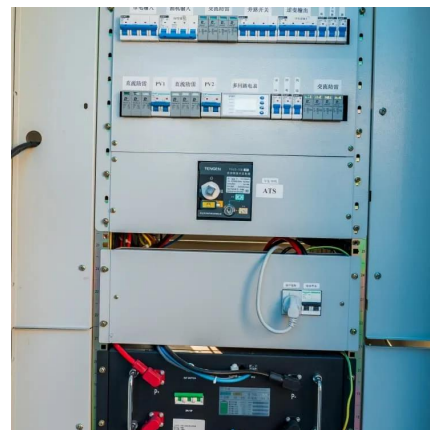
Lightning Protection for Aviation Base Stations

1101395 (rev 11-07) Lightning Protection for Aviation Base Stations What is Lightning? Why are base radios prone to lightning strike damage? What type of damage can I expect if my radio is ...



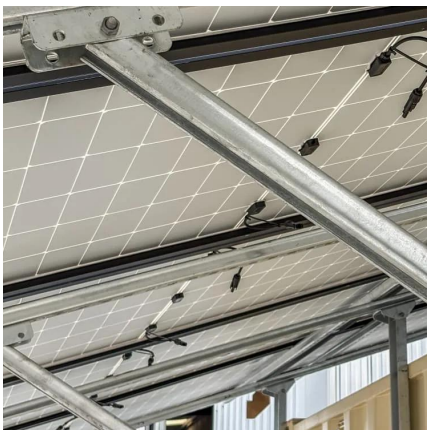
Fire Station Depends on Lightning Protection System

A lightning protection system installed in compliance with National Fire Protection Association (NFPA) lightning protection requirements would have certainly ...



Setting Up a Base Station CB Radio for Long Range Communication

Learn to set up a base station CB radio for long-range communication. Explore key components and expert tips for clear, reliable signals.



Communication Base Station Surge Protection: Safeguarding ...

Communication base station surge protection systems stand as silent guardians against such disruptions. With 23% of telecom downtime incidents in 2023 attributed to electrical surges ...





Lightning and Surge Protection for Telecom

The extensive cabling and wiring deployed in telecommunication networks act as antennas, inadvertently capturing electromagnetic energy from lightning discharges. The ...

The Six Point Plan to Achieving Telecom Facility Lightning

Lightning can couple to telephone lines and RF feeders, leaving communication lines vulnerable to potential damage. With telephone and data lines, surges can occur from ...



Surge Protection from Lightning - Protect Power & Data Systems

Surge Protection from Lightning protects electrical systems, electronics, and data networks from high-energy transients caused by strikes.

????????????????-????-???

This paper discusses the recurring problems of communication base station lightning protection and grounding systems, combined with many years of experience in ...



The main ways of lightning strike mobile communication stations ...

When the overhead pipeline encounters lightning strikes, the overvoltage is introduced into the base station room, which is likely to burn out the communication equipment of the base station.



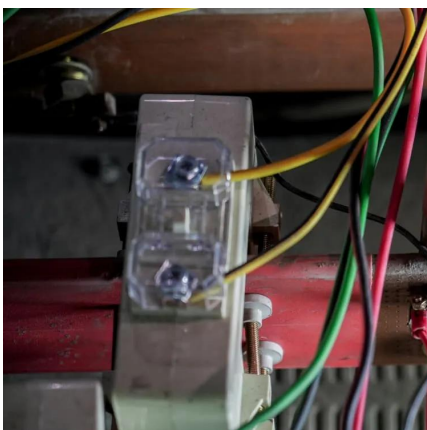
Studying Storms from Space Station

Science in Space June 2025 Scientists use instruments on the International Space Station to study phenomena in Earth's ionosphere or upper atmosphere including thunderstorms, ...



Lightning and Surge Protection for Communication Station

Install lightning rods, grounding, surge protectors, shielding, and follow standards for effective communication station protection.





Lightning Protection for Communications Facilities

Lightning events caused about \$40,000 worth of equipment damage per event, plus costly downtime. Upon examination by a professional, several key retrofits were ...



Lightning protection solution for telecom communication base stations

The lightning arrester for the RuTian feeder is installed at the connection between the antenna and the feeder to prevent lightning from entering the main equipment of the base ...

Lightning Detection Systems: All You Need To Know , Perry ...

Lightning strikes the U.S. about 25 million times a year, kills 20 or more people each year in the U.S. on average, and injures hundreds more. This is on top of the alarmingly ...



Contact Us

For catalog requests, pricing, or partnerships, please visit:
<https://bringmethehorizon.eu>