



SolarMax Pro Energy Storage Systems

**Is there a battery when the
base station is not powered on**





Overview

In the event that you lose power, your Base Station has four (4) NiMH (nickel-metal hydride) rechargeable batteries that can keep your system powered for up to 24 hours. During this time, you'll still be able to arm and disarm your system using the Keypad. Can I change the batteries in my base station?

Though we recommend contacting support if you need to change the batteries in your Base Station, if your power outage lasts longer than 24 hours, you can replace your Base Station's rechargeable batteries with different rechargeable batteries.

Do base batteries run in two directions?

Base batteries run in two directions, which is how Base is able to keep costs low for homeowners. The batteries charge during off-peak hours, like midday and late at night, when energy is more available and demand is low.

How does a base battery work?

This process is called grid-balancing. Base batteries deploy energy to the grid faster than any other service, which is how Base is able to recoup the cost of the battery equipment and keep prices low for homeowners. The charge level of your Base battery will naturally fluctuate over time, rising and falling throughout a multi-day cycle.

What is a base battery system?

The Base battery system is built for performance and reliability. It combines a high-capacity lithium iron battery with intelligent software to optimize energy use. The Base battery system has three main components: the battery pack, inverter, and hub. The long white unit is the battery pack. We mount the battery pack on the ground.

How does the base station work?

It also features a cellular module that operates on a cellular network instead



of Wi-Fi. The Base Station will automatically communicate on the cellular network if your Wi-Fi stops working and will automatically switch to battery power if you lose electricity.

How do I remove the battery on my ring base station?

Ring doesn't recommend that users remove the batteries on their base stations to prevent them from getting damaged. If you must remove the battery on your base station, here is a guide to successfully do it. All you'd need for this is a screwdriver. To remove the base station's backup battery, follow the steps below: Unplug the Base Station.



Is there a battery when the base station is not powered on



Roomba Charging Without Base

Why Charging Your Roomba Matters Roomba vacuums are designed to automatically return to their base when their battery is low, ensuring they're always ready for ...

power supply

Will you submit your designs to a testing facility? Lightning safety: the equipment is not connected to the house AC, so potential bolt would only damage the radios A battery ...



What is a base station energy storage battery? , NenPower

Base station energy storage batteries offer vital support to enhance the stability of both telecommunications and electrical grids. During power outages or disruptions, these ...

What are base station energy storage batteries used for?

Base station energy storage batteries contribute to this objective by enabling more efficient

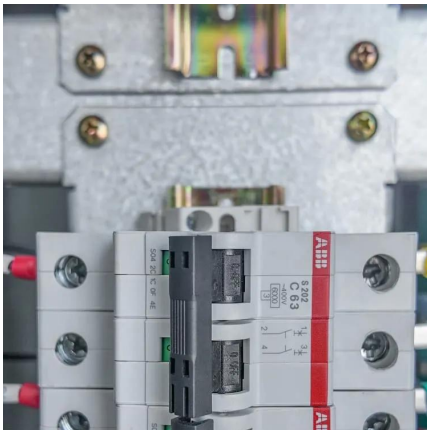


energy consumption and reducing dependence on ...



What is a base station energy storage battery?

Base station energy storage batteries offer vital support to enhance the stability of both telecommunications and electrical grids. During power ...



23 Ring Base Station Common Questions (Solved)

Ring base stations aren't designed for easy battery replacement. The company also advises that users don't remove the batteries of these devices. If you need to remove and ...



Steelseries Nova pro wireless base station not charging : r

Hi all, Got a new steel series nova pro wireless and the base station not charging the batteries. Did anyone encounter this issue? Any ideas how to solve it?





[VTech Phone No Power At Base? \(Here's The Easy Fix!\)](#)

As you probably know, the base only works when charging the handset and if there's a fault with the handset, the base may not appear functional. Follow these steps to ...



Any wireless battery powered cameras supported by Surveillance Station

Video is 'pulled' from Synology, not 'pushed' from the camera. Thus the whole operation mode of battery powered cams is mostly incompatible with Surveillance Station. You can DIY a solar ...

[How the Base battery works: A complete guide to grid ...](#)

Learn how Base's home battery system works, from grid connectivity to outage protection. Discover how our intelligent software optimizes your home's ...



[Base Station \(Gen 3\) Overview and Installation Guide](#)

Overview The Base Station is the brains of your system. It sends alarm signals to the monitoring center* with built-in cellular and Wi-Fi connections, a battery backup that lasts up to 24 hours, ...



Will My SimpliSafe® System Still Work if I Lose Power or Wi-Fi

In the event of a power outage, your SimpliSafe® Base Station is equipped with a backup rechargeable battery supply that will keep your Base Station powered for up to 24 hrs.



[Base Station Battery Failure , SimpliSafe Support Home](#)

Your Base Station comes pre-installed with four (4) NiMH (nickel-metal hydride) rechargeable batteries, which are kept charged by your Base Stations. These ...

[How do you reboot SimpliSafe base station?](#)

Simply unplug the power cord to your Base Station and, while unplugged, remove a battery (you'll need a screwdriver to get to the battery compartment). Wait a few seconds, and then put the ...





[How the Base battery works: A complete guide to grid ...](#)

Learn how Base's home battery system works, from grid connectivity to outage protection. Discover how our intelligent software optimizes your home's energy use and provides reliable ...

[Astro A50 Base Station Not Turning On? \(7 Proven ...](#)

Facing problems with your Astro A50 base station not turning on? Explore troubleshooting steps and solutions to resolve this issue swiftly.

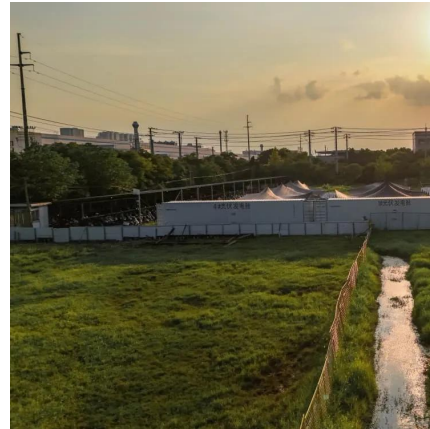


[Issues with base station not powering on : r/simplisafe](#)

I tried all of their suggested troubleshooting (removing a battery to reset it, trying different outlets, etc.) but couldn't get it to work. They sent me a new one- and same issue.

[What Is Base Station Energy Storage?](#)

In the event of a main power failure, the system automatically switches on to keep the base station operational. These systems have a lithium battery, as it charges fast, holds a ...



Improved Model of Base Station Power System for the ...

The optimization of PV and ESS setup according to local conditions has a direct impact on the economic and ecological benefits of the ...



New base not getting power from biofuel reactor : r

So I built this new base, put in a teleporter, biofuel reactor, battery, wired it all up, put some carbon in the biofuel reactor, and nothing is getting power when it runs.



What does the error "Power Outage" mean? , SimpliSafe Support ...

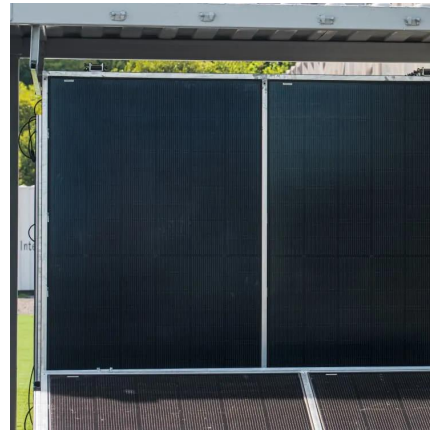
In the event that you lose power, your Base Station has four (4) NiMH (nickel-metal hydride) rechargeable batteries that can keep your system powered for up to 24 hours. During this ...





[Base Station Battery Failure , SimpliSafe Support Home](#)

Your Base Station comes pre-installed with four (4) NiMH (nickel-metal hydride) rechargeable batteries, which are kept charged by your Base Stations. These batteries should never be ...



[23 Ring Base Station Common Questions \(Solved\)](#)

Ring base stations aren't designed for easy battery replacement. The company also advises that users don't remove the batteries of these ...

[Do You Need A Base Station For Ring Cameras? 5 ...](#)

Ring Stick Up Cam Battery: The battery-powered version of the Ring Stick Up Cam can operate without a base station as well. It connects ...



What are base station energy storage batteries used for?

Base station energy storage batteries contribute to this objective by enabling more efficient energy consumption and reducing dependence on traditional electricity sources.



Can I Use Arlo Pro 2 Without Base Station? Here's What You ...

Additionally, the base station is also responsible for providing power to the cameras, so if you do not have a base station, the cameras will need to be powered by an external battery.



[Battery Powered Base Station : r/amateurradio](#)

I've been thinking that it would be nice to have battery backup capabilities in the event of a power failure from a storm, and that led to a battery powered station instead of power supplies. I have ...



Contact Us

For catalog requests, pricing, or partnerships, please visit:
<https://bringmethehorizon.eu>