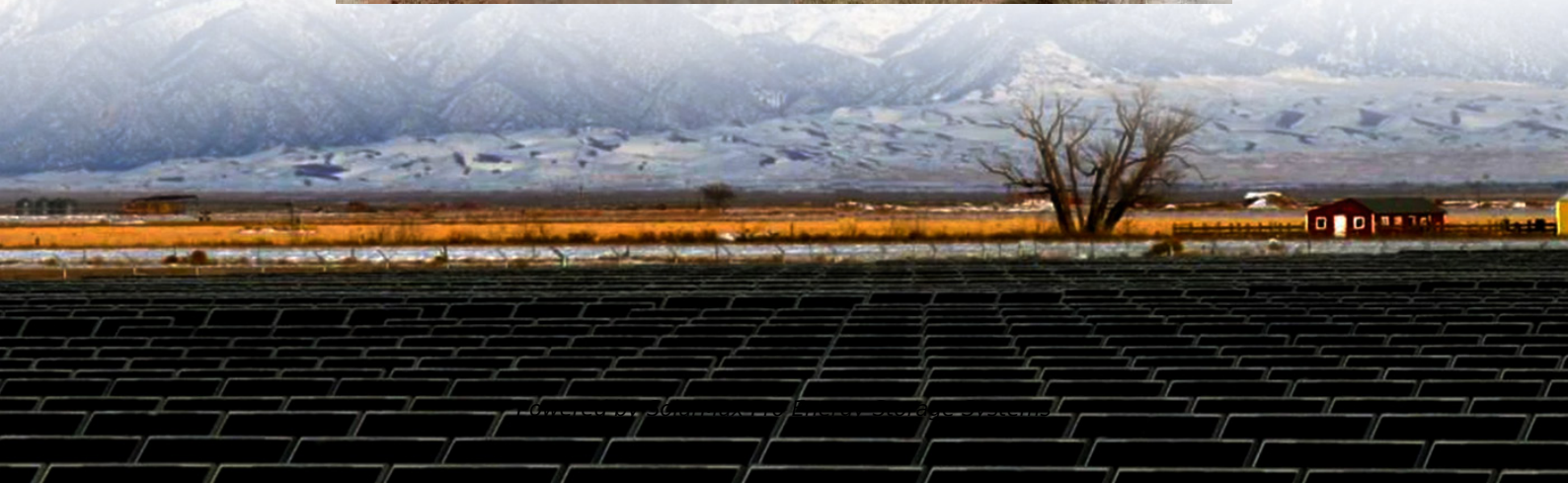


# **Is it okay if the outdoor power supply does not require high power**





## Overview

---

Is an external power supply required?

An external power supply is required for devices like printers, displays, pin pads, external DVD-ROMs, and hard drives. Unfortunately, the bus supplied power is limited to 2.5 Watts (0.5A @ +5V) per port, sufficient to provide enough power to input devices, web cameras, and other low power devices.

Is a permanent power outlet necessary?

For lighting, lawn tools used on a regular basis, or power needs for outbuildings, you need a permanent power solution for safety. This can involve an outdoor outlet addition to your home's main structure, or wiring run remotely to an outbuilding.

Do I need a GFCI outlet if I run power outside?

When running power outside, a GFCI-equipped outlet is required by code in all areas exposed to moisture, such as the outdoors, and ensures safety. When adding an outdoor outlet, be sure to choose an outdoor-rated, weatherproof model with built-in, high-sensitivity GFCI.

Is a permanent power solution necessary?

For lighting, lawn tools used regularly, or power needs in outbuildings, a permanent power solution is necessary for safety. This can involve adding an outdoor outlet to your home's main structure or running wiring remotely to an outbuilding. For power lines not connected to your house, cable must be wired to a separate GFCI indoors.

How can you ensure a power cord's safety?

To ensure safety and prevent tripping hazards, select a power cord with TEST/RESET buttons, typically found in kitchens, baths, and garages, which protect your family from shock in the event the cord is exposed to water. Be sure to choose a cord that is the correct length, neither too short nor too long.



How do I choose an outdoor outlet?

When choosing an outdoor outlet, be sure to select an outdoor-rated and weatherproof model with built-in, high-sensitivity GFCI\\*. All exterior outlets should have spring-loaded covers to protect them from weather, pests, and most importantly, moisture.



## Is it okay if the outdoor power supply does not require high power

---

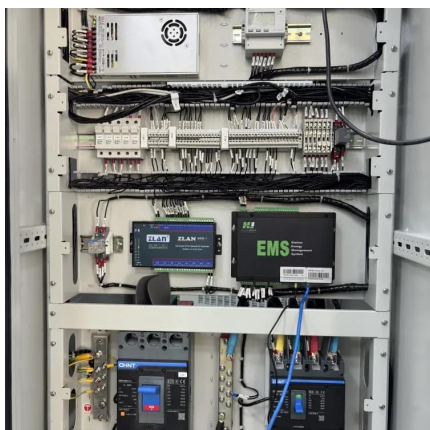


### What are the effects of having a much higher watt PSU then ...

The power supply that you are using is fine for your build. Having a higher wattage PSU that what your PC needs is okay and actually means that it will operate at optimal ...

### [Do Outdoor Speakers Need Power? A Comprehensive Guide](#)

Ultimately, both wired and wireless outdoor speakers require power in some form. However, the choice between the two depends on your specific needs and preferences, such ...



### What's the Best Way to Run Power Outside? , Mr. Electric

Powering several devices outdoors presents serious challenges--few outlets, knotted cords, and weather hazards. Extension cords, in most instances, simply fall short of ...

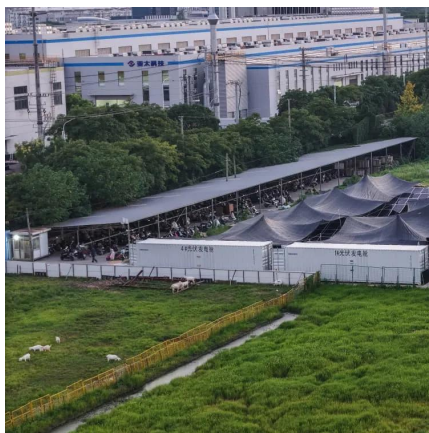
### [The Ultimate Guide to Low-Voltage Transformers for ...](#)

Learn everything you need to know about low-voltage transformers for outdoor lighting. Choose





the right power supply and maximize performance.



### [Understanding Outdoor Power Stations: All You Need ...](#)

Learn all about outdoor power stations, their working principle, charging methods, and application scenarios. Get the complete lowdown in one article from ...

### [Bringing The Indoors Out: The Ultimate Guide to ...](#)

Regardless of your type of facility, there are three main considerations you should keep in mind when selecting an outdoor power solution:  
1. Safety. Any outdoor ...



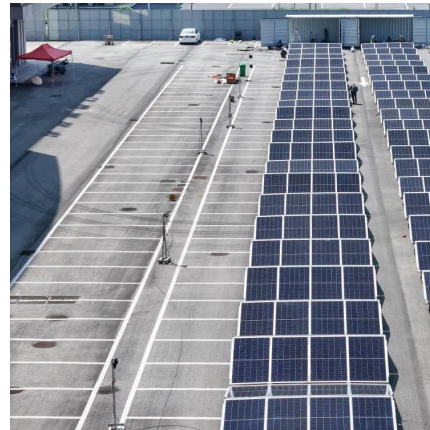
### **Are there any disadvantages using a higher than required watt ...**

Correct, getting a power supply with a much higher wattage than what your system requires can lead to lower efficiency as the power supply may operate outside of its most efficient range.



## What Power Supply Do I Need for My LED Strip? A Practic

Selecting the right power supply for your LED strip is crucial to ensure safe and efficient operation. Using an incorrect power supply can lead to overheating, insufficient brightness, or even ...



## **Class II power supplies explained**

While a Class II power supply does not require a protective earth, some lower power Class II products find applications in Class I systems, and Class II ...

## Do Outdoor LED Strips Need Special Power Supplies?

Yes, outdoor LED strips generally require special power supplies, often called drivers. These power supplies should be IP-rated (e.g., IP67) for water and dust resistance if exposed to the ...



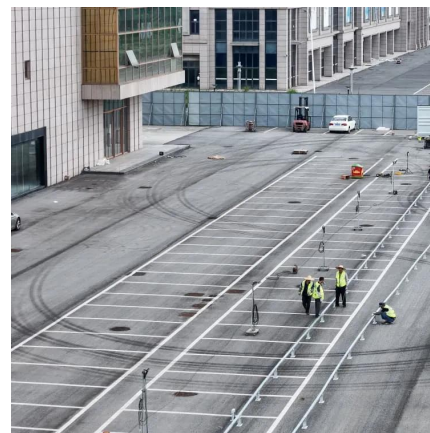
## Wiring A Sauna , Power Supply Required For Saunas

The first question we're often asked about when planning a sauna build is the electrical requirements. This comprehensive guide is written to answer those ...



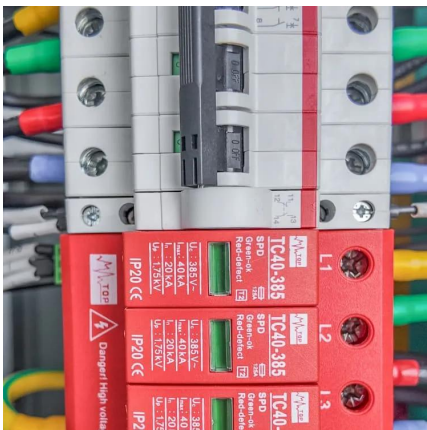
### [Precautions for using Outdoor power supply\\_Huaquan Power](#)

Avoid connecting high-power devices (such as electric heaters and microwave ovens) simultaneously, and prioritize ensuring power supply for critical equipment. Regularly ...



### [Complete Guide To Portable Power Supply: Pros](#)

A solar-powered portable power supply offers solar power solutions to homes. These are also used during blackouts, off-grid living, and outdoor ...



### [Ultimate Guide to Outdoor Power Strips: Buyer's Tips](#)

Powering several devices outdoors presents serious challenges--few outlets, knotted cords, and weather hazards. Extension cords, in most instances, simply fall short of ...







## Understanding Outdoor Power Stations: All You Need to Know

Learn all about outdoor power stations, their working principle, charging methods, and application scenarios. Get the complete lowdown in one article from Topwell Power.

### [Amazon Fire Stick Power Requirements: Correct ...](#)

Experiencing problems with your Amazon Fire Stick? Wondering if you're setting it up correctly? You're probably experiencing problems with your ...



## Bringing The Indoors Out: The Ultimate Guide to Outdoor Power ...

Regardless of your type of facility, there are three main considerations you should keep in mind when selecting an outdoor power solution:

1. Safety. Any outdoor power solution you select ...

## What's the Best Way to Run Power Outside? , Mr. Electric

Do NOT leave even your outdoor extension cord outside more than a day or two. Left outside over extended periods, cord materials can breakdown, potentially resulting in ...





### [How to Choose Suitable Outdoor Power Outlets](#)

For better performance and safety in outdoor spaces, it is vital to select the most appropriate outdoor power points. This manual is a complete guide for outdoor power outlets, ...



### [Topics in Circuit Protection For Power Supplies](#)

The switch mode power supply, such as the Allen-Bradley Bulletin 1606 line and some other power supplies, incorporate a self-protection feature to prevent overcurrents and subsequent ...



### [How to Choose Suitable Outdoor Power Outlets](#)

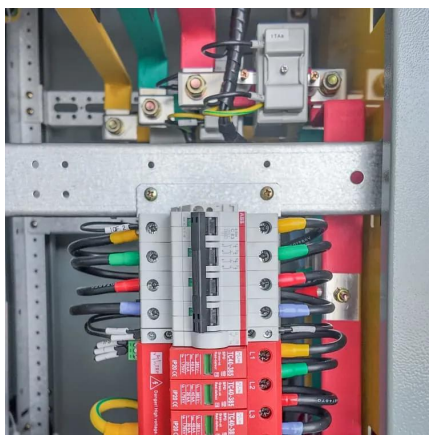
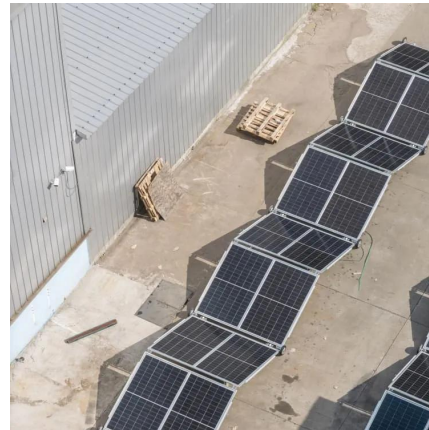
For better performance and safety in outdoor spaces, it is vital to select the most appropriate outdoor power points. This manual is a complete ...





### Are PSU power requirements over exaggerated? : ...

Vendors often suggest very high wattage power supply because they assume average user does not know much about power supplies (average non-savvy ...



### Network Switches That Don't Require Power: Do They ...

All network switches do require some form of power to operate, and whilst most people will use AC power, there are other options available. USB ...

### How to choose an outdoor power supply?

How to choose an outdoor power supply? The only purpose of this article is to save your time with the data I have compiled and to provide you with a comprehensive ...



## Contact Us

---

For catalog requests, pricing, or partnerships, please visit:  
<https://bringmethehorizon.eu>