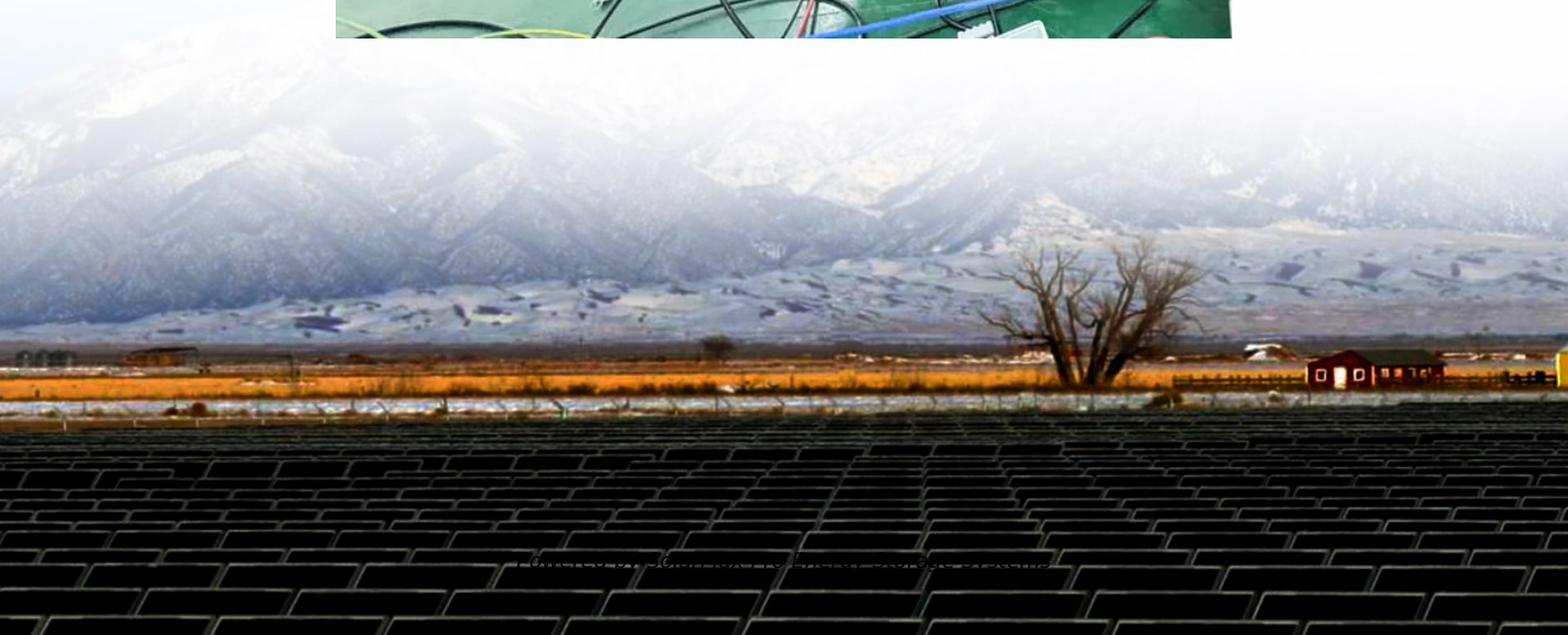
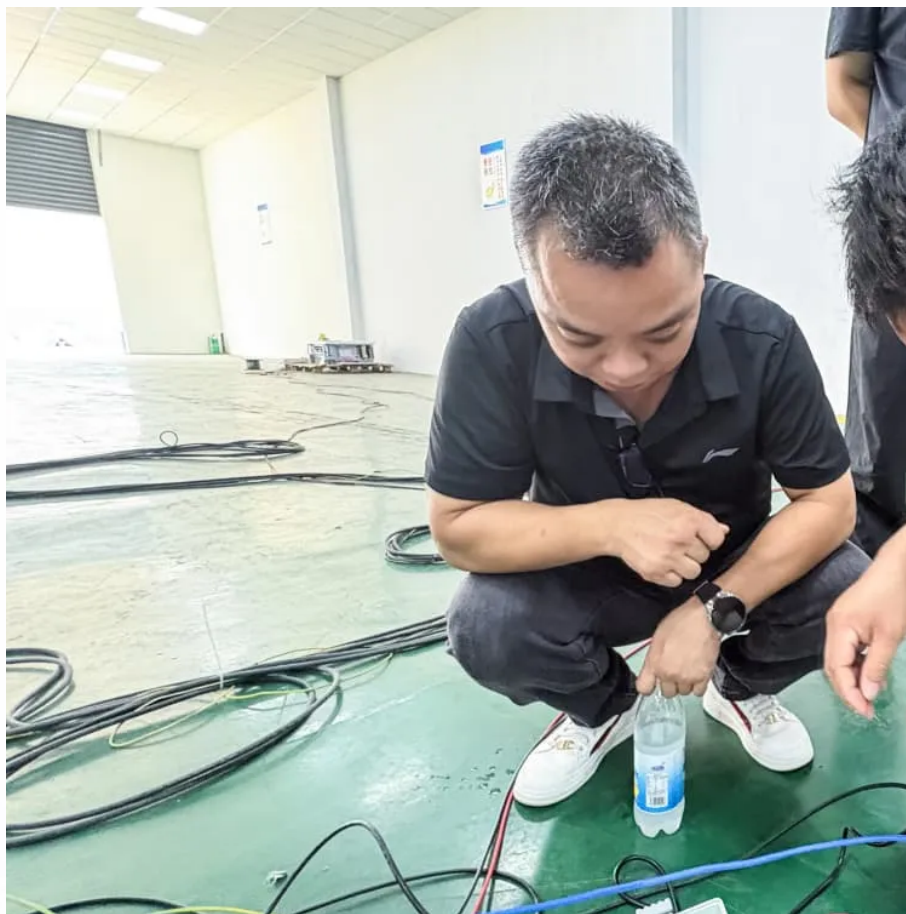




SolarMax Pro Energy Storage Systems

Inverter runs 24 hours





Overview

Yes, you can leave an inverter running 24 hours a day, provided it is properly sized, maintained, and connected to a reliable power source. Inverters are designed to convert DC power from batteries into AC power, which is suitable for running household appliances and electronics.



Inverter runs 24 hours



[Can I Run My Ac 24/7? The Truth About Cost And ...](#)

Can I Run My Ac 24/7? The Pros And Cons! Knowing the pros and cons of running an air conditioner 24/7 will help you to make your informed ...

[Solar Inverter For Home With Battery 24 Hours Backup](#)

Firstly, yes, an inverter can run 24 hours a day. Inverters are typically designed for long-duration operation and have efficient cooling systems to ensure stable performance during continuous ...



[Are Mini Splits Supposed to Run All the Time?](#)

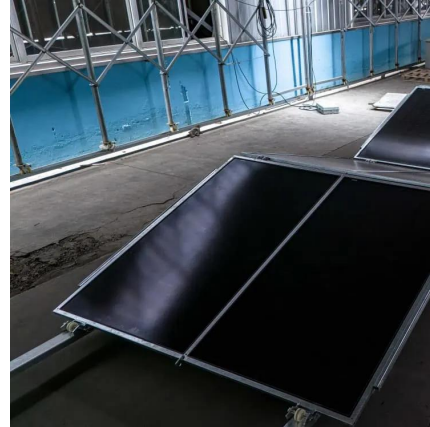
Mini splits keep running all the time without shutting off. Should you be worry about it? Many people are asking whether their mini splits should be running all the time. So, I ...

[Can Solar Inverters Operate Continuously?](#)

Can Solar Inverters Run 24 Hours a Day? The short and simple answer is yes. An inverter can



run 24 hours a day without any issues. As long as there is a power supply and no ...



What percentage of inverter capacity can you run continuously?

My rule of thumb after designing satellites for 20 years is to not run continuously over 50% of the rated continuous capacity. Then use the rated continuous capacity as the ...

Debunking the myth: is your heat pump meant to run 24/7?

Heat pumps are designed to provide efficient heating and cooling for homes and businesses. However, some homeowners may notice that their heat pump seems to be ...



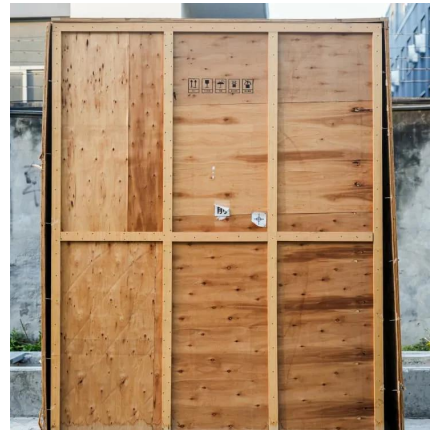
Am I better off leaving split type inverter AC on 24/7? Or

Inverters are designed to have long run times. Depending on the model, even when off, it can run at a very low capacity to dehumidify. As long as the energy bills aren't ...



Inverter Runtime: Can It Run 24/7? Discover the Truth! -- ...

Yes, you can leave an inverter running 24 hours a day, provided it is properly sized, maintained, and connected to a reliable power source. Inverters are designed to convert ...

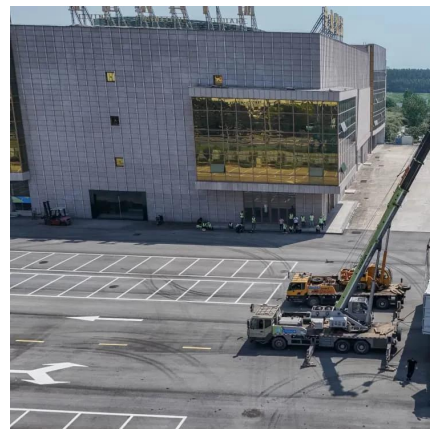


What Will An Inverter Run & For How Long? (With Calculator)

So I'm gonna explain to you guys in simple words about what you can run on your any size inverter and what are the key point to keep in mind. And also how long your inverter ...

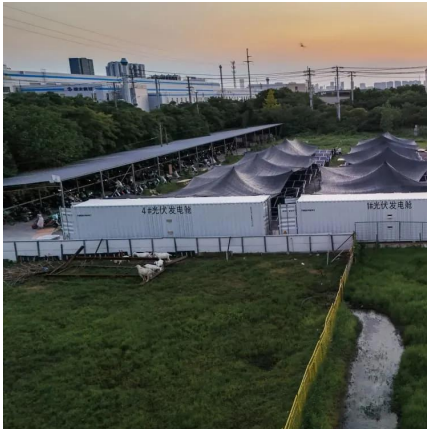
Can the Inverter Run Continuously for 24 Hours?

High quality inverters are fully capable of continuous operation 24 hours a day. The key lies in the design of the inverter to effectively handle the heat and load pressure generated ...



Inverter for home with battery 24 hours backup in india price

Can a power inverter run 24 7? Firstly, yes, an inverter can run 24 hours a day. Inverters are typically designed for long-duration operation and have efficient cooling systems to ensure ...



How Long Can You Run an Inverter Generator? , EcoFlow US

A: Yes, you can run a generator 24 hours a day, but it requires diligent maintenance and monitoring. For portable inverter generators, running them continuously for extended periods

...



4Patriots® Official Site , Special Offer , 2X The Power

Claim Your Solar Generator & Free Gifts Today. At 4Patriots® We Champion Freedom & Self-Reliance By Offering High-Quality Products.

Can an inverter run 24 hours a day

An inverter can easily run 24 hours a day, without any fail. In fact, since inverters require energy in the form of electricity to operate, as long as the power is on and there are no ...





1500 Watt Heater: What Size Inverter & Solar Panel ...

1500 watt Heater Power Consumption A 1500-watt heater will consume 1500 watts of power when running. But most oil-based heaters do ...

Does a Solar Inverter Run Continuously? What Happens If It Runs

A solar inverter can operate all day or 24 hours a day, depending on the system design and usage scenario. However, "constant operation" does not always mean the inverter is at full load.



What Will An Inverter Run & For How Long? (With Calculator)

A solar inverter can operate all day or 24 hours a day, depending on the system design and usage scenario. However, "constant operation" does not always mean the inverter is at full load.

A gentle reminder that letting your inverter air ...

"The longer it is used, the more it consumes. Using an inverter air conditioner for 8-12 hours is more energy-efficient compared to using it for 24 ...



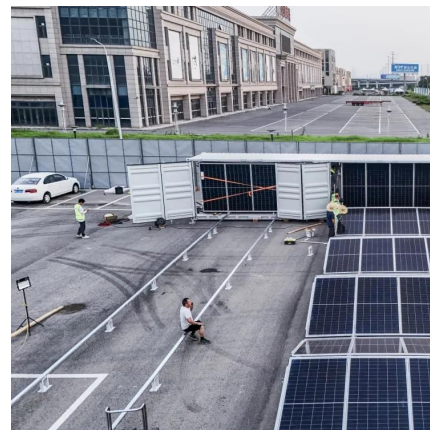
Is it better to leave an inverter AC constantly running or to

I spent maybe 2 hours searching and couldn't find a definitive answer. Is it better (more energy efficient) to leave an inverter AC always running and just lower the power and temperature at ...



Can the Inverter Run Continuously for 24 Hours?

High quality inverters are fully capable of continuous operation 24 hours a day. The key lies in the design of the inverter to effectively handle the ...



The Complete Off Grid Solar System Sizing Calculator

An off-grid solar system's size depends on factors such as your daily energy consumption, local sunlight availability, chosen equipment, the ...





Lithium (LiFePO4) Battery Runtime Calculator - Dot ...

Note: Use our solar panel size calculator to find out what size solar panel you need to recharge your battery. Calculator assumption Lithium ...



Can Solar Inverter Run 24 Hours?

A solar inverter requires electricity to function, and therefore, it can run constantly as long as it is supplied with power. Hence, the short answer to this question is yes, a solar ...

Can Solar Inverters Operate Continuously?

An inverter can run 24 hours a day without any issues. As long as there is a power supply and no underlying problems, the inverter will continue to operate effectively and efficiently.



Contact Us

For catalog requests, pricing, or partnerships, please visit:
<https://bringmethehorizon.eu>