



**SolarMax Pro Energy Storage Systems**

# **Inverter connects battery and motor**





## Overview

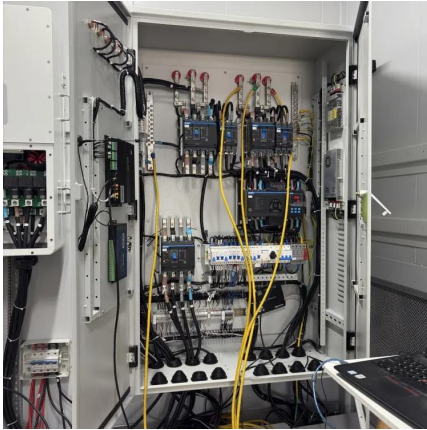
---

Yes, a battery can run an AC motor using an inverter. The inverter changes direct current (DC) from the battery into alternating current (AC). This AC power is necessary for the motor. The inverter also provides variable-frequency AC output to match the motor's requirements for efficient operation.



## Inverter connects battery and motor

---



### Power Inverter: Can I Hook It Directly to the Battery for Safe

Yes, you can hook a power inverter directly to the battery. This setup is common for many applications, such as in vehicles or off-grid systems. Directly connecting an inverter to a ...

### [How Inverters Work with Batteries: A Beginner's ...](#)

An inverter changes DC power from a 12 Volt deep-cycle battery into AC power. The battery discharges while the inverter provides power. You ...



### How to connect inverter to battery: a step-by-step guide for safe ...

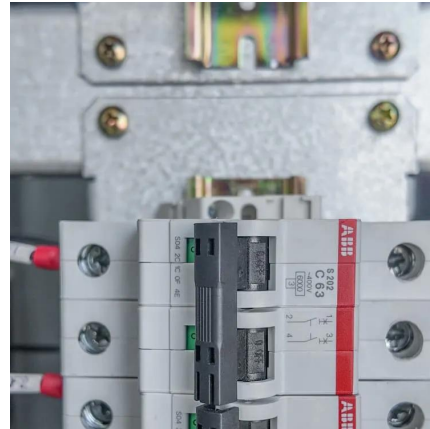
We'll explore how to connect inverter to battery, its purpose, and the tools needed for a proper and safe connection. Connecting an inverter to a battery is a crucial step in setting ...

### Inverter Battery Connection: Essential Tips For Safe And Efficient

When it comes to setting up an inverter system,



one element stands out for its critical importance--the inverter battery connection. For laymen, enthusiasts, product buyers, and ...



### [Connect your inverter to the battery with ease](#)

When installing an inverter and connecting it to a battery, it is crucial to ensure proper wiring to guarantee the safety and efficiency of the system. Proper wiring practices are essential as they ...



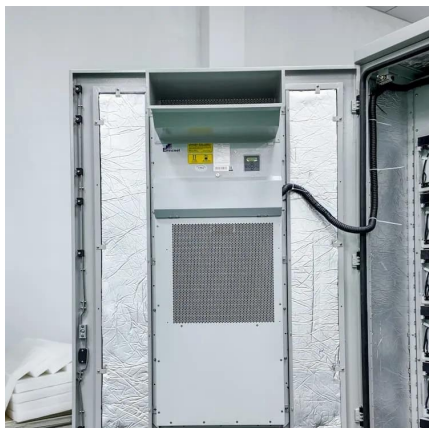
### [What Is an Inverter in an Electric Vehicle?](#)

An inverter is a device that converts direct current (DC), which is supplied from a battery, into alternating current (AC). A motor in an electric vehicle runs on this alternating ...



### **Motor to Inverter to Battery: Wiring Guide for Beginners [DIY]**

This guide will walk you through the process of wiring a motor to an inverter, which is then connected to a battery. This setup is common in off-grid power systems, electric vehicles, and ...







## What is an Inverter in Electric Vehicle? What Does It ...

Conclusion The inverter in electric vehicles is a cornerstone of EV technology, enabling efficient power conversion, motor control, and energy ...



## How Inverters Work with Batteries: A Beginner's Complete Guide ...

An inverter changes DC power from a 12 Volt deep-cycle battery into AC power. The battery discharges while the inverter provides power. You can recharge the battery using ...

## 12 Volt Battery Inverter: How Long it will Last

How long will a 12v Battery last with an Inverter? Honestly, you can't tell the exact duration a 12v battery lasts when connected to a device ...



## How to Safely Connect a Battery to an Inverter: A Step-by-Step ...

Learn how to safely connect your batteries to your inverter with our guide. Avoid common wiring mistakes to optimize performance and extend system life.



### [Wiring Power Inverters In Cars: A Step-By-Step Guide](#)

A comprehensive guide to wiring power inverters in cars, covering everything from safety precautions to step-by-step instructions for a secure and efficient installation.



### **Can A Battery Run An AC Motor? Direct Connections, Inverters, ...**

Yes, a battery can run an AC motor using an inverter. The inverter changes direct current (DC) from the battery into alternating current (AC). This AC power is necessary for the ...

### [A Complete Guide to Inverters/Variable Frequency ...](#)

There are a number of different types of inverters but we will be discussing the type that is used to control electric motors in electrical ...





## Run An AC Motor With Battery: DIY Inverter-Free Solutions For ...

To run an AC motor with a battery, use an inverter or motor controller. These devices convert the battery's DC voltage into the AC voltage needed by the motor. They also ...

## Electric Motor Inverter Explained

An inverter takes DC electricity from the EV battery and transforms it into three-phase AC electricity. The three phases drive the motor to produce rotation and torque.



## [How to Connect an Inverter to a Car Battery](#)

Learn how to properly wire an inverter to your car battery to power your electronic devices on the go. Get step-by-step instructions and safety tips.

## Can I connect an inverter to my 12v battery while my car is

12v connected to the car normally, and then a 400w power inverter clamped onto the 12v. Can I do this and have the car running? If I can't do this and the car has to be off, why? Is it a ...



### [How to connect inverter to battery: a step-by-step ...](#)

We'll explore how to connect inverter to battery, its purpose, and the tools needed for a proper and safe connection. Connecting an inverter to a ...



### [Connecting an inverter battery: a visual guide](#)

Learn about the connection diagram for an inverter battery, including how to properly connect the battery terminals and ensure optimal performance.



### [How to Connect a Large or Small Inverter to a Battery](#)

Making the Decision: How to connect the Inverter  
When does a small inverter's power come from a 12V DC outlet and when does that inverter ...







## [What Purpose Does Nissan Ev's Inverter Serve?](#)

The inverter is an integrated artifact that funnels out battery power to electrify the vehicle's motors. At first glance easily taken for granted, the inverter's molded enclosure hides the vital ...



## [Can I connect car alternator directly to the inverter](#)

There are normally 2 field windings brought out of a car alternator which connect to a voltage regulator to provide a constant 13.8/14V, often the alternator has the regulator built ...

## [How to Safely Connect a Battery to an Inverter: A ...](#)

Learn how to safely connect your batteries to your inverter with our guide. Avoid common wiring mistakes to optimize performance and extend ...



## [Power When Away From Home , Using a Power Inverter](#)

A power inverter running off a battery changes DC to AC. Use a power inverter to supply energy to devices such as televisions, microwaves, computers or power tools.



## Contact Us

---

For catalog requests, pricing, or partnerships, please visit:  
<https://bringmethehorizon.eu>