



SolarMax Pro Energy Storage Systems

Inverter auxiliary voltage





Inverter auxiliary voltage



Considerations for auxiliary flyback power supplies

Designed to provide power to the control, signal-chain, sensing and gate-driver devices, the auxiliary power supply typically comes in the form of an isolated flyback controller that converts ...

Understanding inverter voltage

In this article, let's embark on a comprehensive journey to unravel the mysteries surrounding inverter voltage, exploring its nuances, applications, and the Tycorun inverter's ...



What is Auxiliary Power?

The auxiliary power supply converts the electricity used for air conditioning, interior lighting, displays, etc. The static inverter is installed to provide power that has low voltage and ...

Auxiliary Power Supply System with Parallel ...

This research proposes a roof-mounted auxiliary power supply (APS) system for 600 VDC low-floor



light rail vehicles (LRVs). The proposed ...



Auxiliary power supply|Transportation Systems ...

The auxiliary power supply (static inverter) converts the power for interior light, displays, air conditioning, etc. Even though there is a propulsion inverter, the ...



Project design > Array and system losses > Auxiliaries ...

Auxiliaries in the Inverter's definition
Manufacturers have also the opportunity of defining an Auxiliary consumption parameter, which represents the necessary ...



Auxiliary Supply Works With Input Voltages from 40V to 1000V

It has two outputs; a +22V regulated output to power the system controller and a -6V unregulated output for the system resolver.
Figure 1 - 45W Auxiliary Power Supply for 800V ...





Auxiliary Power Systems

Auxiliary power systems provide the constant, regulated power needed to power these auxiliaries. However, supply voltage dips, electromagnetic interference, complex assembly integration, ...



[45W Auxiliary Power Supply for 800V Traction ...](#)

Supports a broad input range of 40V to 1000V, making it adaptable for various EV, HEV and PHEV traction inverter architectures while allowing scalability to ...

High Density Auxiliary Power Supply Using a SiC MOSFET ...

A high-voltage to low-voltage backup auxiliary power supply has become prevalent in automotive powertrain applications. This application report discusses key considerations and design ...



Automotive 40-V to 1-kV Input Flyback Reference Design ...

Description This power supply reference design for automotive auxiliary circuits generates a 15-V, 4-A output from a wide input range of 40 V to 1 kV and up to a 1.2-kV transient. The design fits ...



Auxiliary power supply|Transportation Systems ...

The auxiliary power supply (static inverter) converts the power for interior light, displays, air conditioning, etc. Even though there is a propulsion inverter, the static inverter is installed in ...



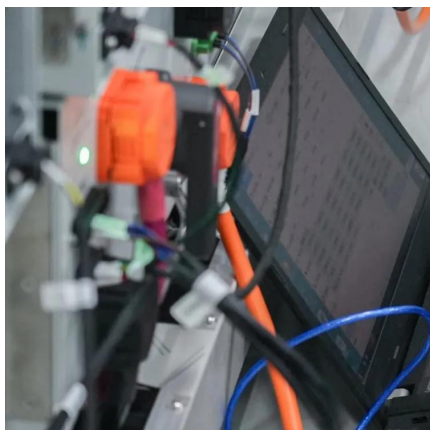
A Three-Level Auxiliary Resonant Commutated Pole Inverter for ...

Shifting the electric vehicle (EV) bus voltage from 400 to 800 V has a major impact on EV inverters design. Three-level inverters are designed to cope with high battery voltage. Among ...

Auxiliary Supply Works With Input Voltages from 40V to 1000V

One way to do this is to use the voltage generated by the back EMF to power the controller for the time needed to place the circuit in a safe state. This involves creating an ...



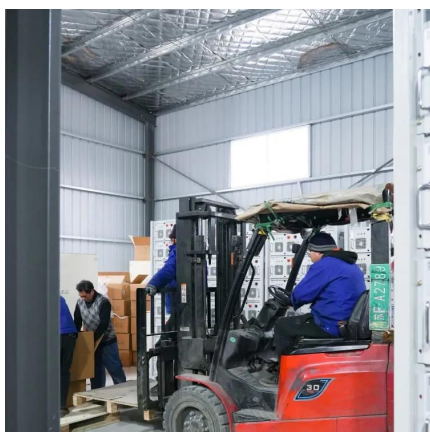


Design of Auxiliary Power Supply for the Solar PV Inverter

Abstract. In order to design PV inverter auxiliary power supply, circuit with isolated single-ended anti-flyback current-control mode, is obtained by experimental design of the circuit for the ...

Understanding the Auxiliary Voltage of Inverters Key Applications ...

What Is the Auxiliary Voltage of an Inverter? The auxiliary voltage of an inverter refers to the secondary power supply required to operate the inverter's control circuits, cooling systems, or ...



Auxiliary power solutions for 1,500-Vdc photovoltaic ...

Auxiliary Circuits Need Attention However, there is an area in the system that requires attention; PV combiners and inverters need low voltage ...

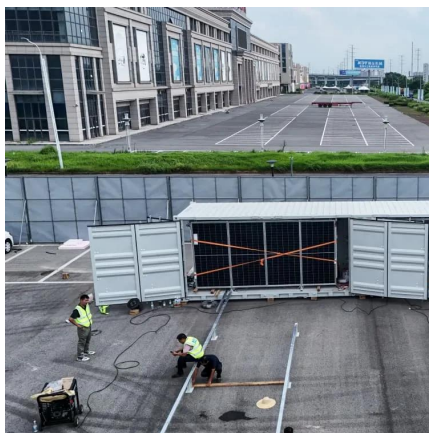
[100W HV \(1kVDC\) auxiliary power supply](#)

L6566BH has embedded 840V HV start-up. The total applicable voltage considering the 20% margin and using STN1HNK60 (600V) is ~1200V. K5 shows avalanche energy dissipation ...



On-Board Inverter (DC/AC converter) for Auxiliary Motors

Auxiliary motor inverters (DC/AC converters) convert high-voltage dc from power batteries into alternates, mostly for commercial vehicles. The DC/AC converter supplies power to and ...



45W Auxiliary Power Supply for 800V Traction Inverters ...

Supports a broad input range of 40V to 1000V, making it adaptable for various EV, HEV and PHEV traction inverter architectures while allowing scalability to higher voltages and power ...



Auxiliary inverter

Auxiliary inverter - high-voltage (commercial vehicles) Enhance every auxiliary application in truck, bus, construction and agricultural vehicle design with the right semiconductor solutions





DESIGN AND DEVELOPMENT OF AUXILIARY POWER ...

Control IC UCx84x. Auxiliary Power Supply is a vital part in an Inverter. It powers the control, signal acquisition and conditioning units of an Inverter. A Digital Signal Processor acts as the ...



Contact Us

For catalog requests, pricing, or partnerships, please visit:
<https://bringmethehorizon.eu>