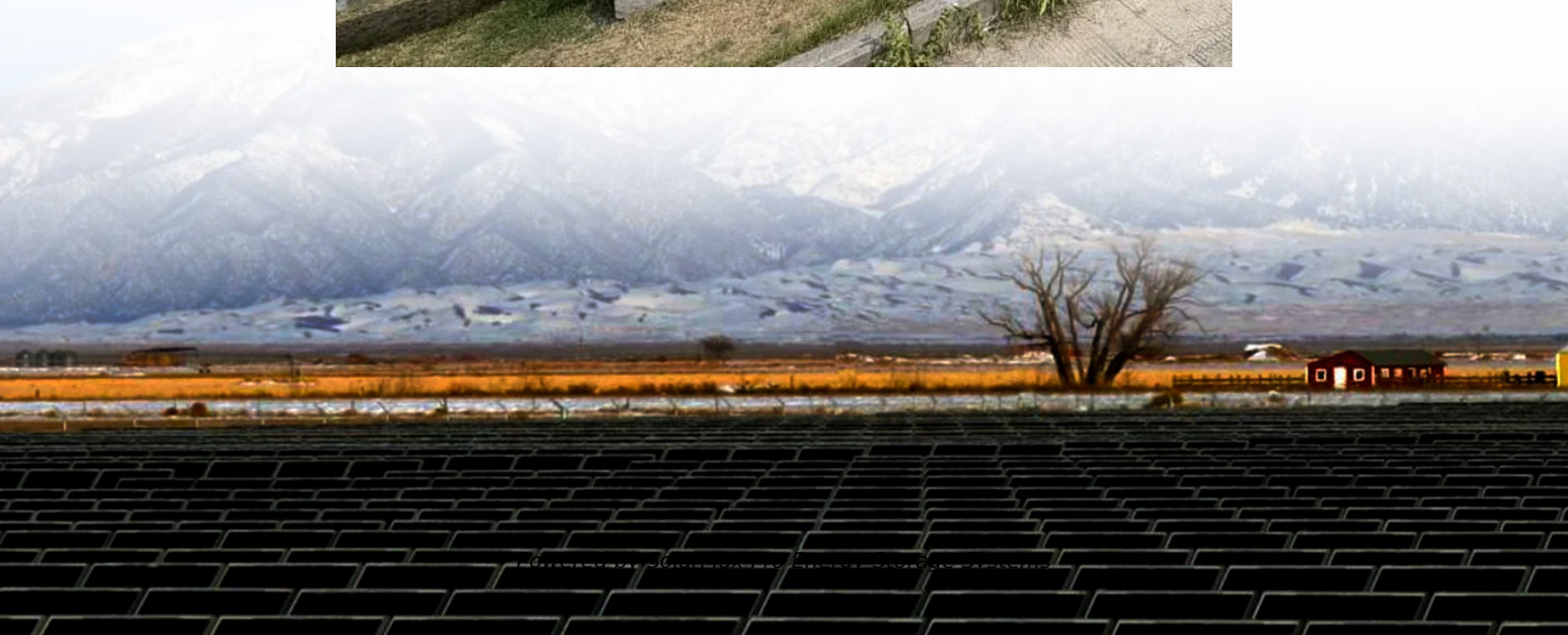




SolarMax Pro Energy Storage Systems

Intentionally cut off the power supply to the base station





Overview

As their name indicates, emergency operations are intended to eliminate, as quickly as possible, a danger that occurs unexpectedly. The emergency break is designed to cut off the electrical power, whereas the emergency stop takes account of the.

When movements produced by electrical devices or machines can be the source of danger, these devices or machines must be equipped with.

Emergency breaking is normally required for all installations in which there may be faults or risks of electric shocks: laboratories, boiler.

Isolation is used to separate an installation or part of an installation electrically. The purpose of isolation is to ensure the safety of people working on.



Intentionally cut off the power supply to the base station



Disconnecting the Power Supply

Disconnecting it first removes all the possibility of a short between positive and negative without going direct to the battery negative terminal. For disconnecting individual ...

Cut off , Power Supply terms , Matsusada Precision

This page provides descriptions of Cut off in Power Supplies. Cut off (Cutoff) means to shut off or intentionally stop. Cutoff frequency is defined as a ...



Requirements For Safely Cutting Off Crane And Hoist ...

For safety, it is important for personnel to be able to cut the power on overhead cranes and hoists during operation--independently of the ...

Quick PSA for people who want to remotely turn off ...

My base stations are permanently mounted with the cabling running through the walls for a clean



look, so unplugging them to cycle power is a total pain. So in ...



Requirements For Safely Cutting Off Crane And Hoist Power In ...

For safety, it is important for personnel to be able to cut the power on overhead cranes and hoists during operation--independently of the operating controls--in the event of ...

[Base Station V2 Chrome Possible Power issue? : r/razer](#)

I tested several things (updates, software, resources, hardware) and pinned it down to the base station by plugging my headset directly into my desktop. All the weird behavior stopped after that.



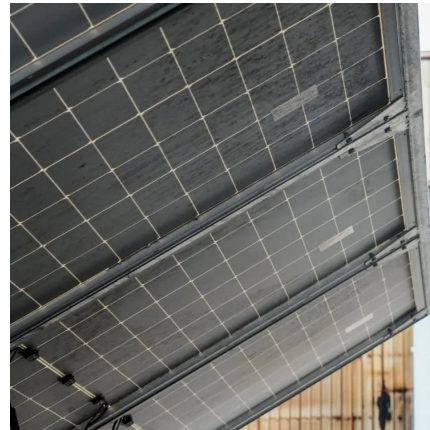
[Brownout Vs Blackout Vs Power Interruption-What's ...](#)

A power cut occurs because of many natural and artificial reasons, such as a hurricane, transformer failure, low or high voltage, and several other ...



Quick PSA for people who want to remotely turn off their base station

My base stations are permanently mounted with the cabling running through the walls for a clean look, so unplugging them to cycle power is a total pain. So in that regard I'll still use two plugs, ...



The generator distribution problem for base stations during ...

Motivated by the need for uninterrupted service provision in the telecommunications industry, this paper presents a novel problem concerning the transportation of diesel ...



[Base station sleep/power off problem returned with 1.8.3](#)

Valve Index, Base stations 2.0 One of my base stations was previously experiencing an issue where if you have the stations set to sleep mode, after several hours it ...



[Cut off , Power Supply terms , Matsusada Precision](#)

This page provides descriptions of Cut off in Power Supplies. Cut off (Cutoff) means to shut off or intentionally stop. Cutoff frequency is defined as a boundary between the pass band and ...



What services is it a war crime to cut off or eliminate ...

The question is really, is it legal to cut off supplies to a civilian population if that is the only way to cut off supplies to their military. The ...

[Best portable power station of 2025: My top-rated ...](#)

Best portable power station for RVs and home back-up A heavyweight beast of a power station, this unit boasts battery expansion, ...





[Shorting a Power Supply: What You Need to Know](#)

In the event of a malfunction or surge that could potentially damage connected devices, intentionally shorting the power supply can prevent further damage or fire hazards by ...

Steps to cut the power supply in an emergency - Leader Services

Here are the steps you need to follow to quickly and safely cut off the electricity supply in an emergency. Look for emergency signs: sparks, smoke, burning smell, tripped circuit breakers ...



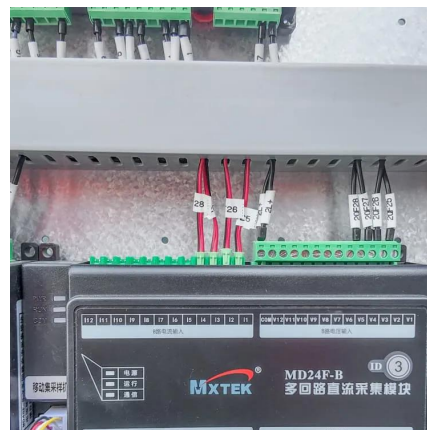
[Cutting the Cord to Test Energy Resilience](#)

Testing energy resilience by cutting commercial power to the entire or segments of U.S. Army installations is an undeniable means of bringing to ...



Power Supply Solutions for Wireless Base Stations Applications

In particular, MORNSUN can provide specific power supply solutions for optical communication and 5G base stations applications. In particular, MORNSUN's VCB/VCF series of isolated 3 ...



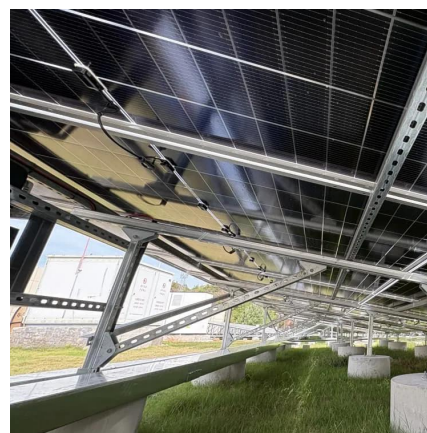
[Safe Operations Near Roof Cellular Base Stations](#)

If the power to the room needs to be cut, be sure to assign a member to confirm that the power supply to that base station radio room is ...



[HUAWEI DBS3900 Dual-Mode Base Station Hardware ...](#)

Low Power Consumption The DBS3900 can control the power-on/off of boards through software, disabling of RF channels through software, voltage adjustment of PA power supply, and the ...



[How to Repair your Base Station Internal Power Supply](#)

How to repair a broken Apple Airport Base Station or Lucent Access Point. Failures occur due to bad capacitor choices and overheating.





LLVD & BLVD in Base Station Power Cabinets

LLVD is a power management mechanism that automatically disconnects the load (i.e., base station equipment) when the power system detects that the output voltage falls below a set

...



Emergency breaking, stop and isolation intended to eliminate

As their name indicates, emergency operations are intended to eliminate, as quickly as possible, a danger that occurs unexpectedly. The emergency break is designed to ...

The Inner Workings of Steam Base Stations: A Comprehensive ...

How do steam base stations compare to other tracking technologies? Steam base stations use a laser-based tracking technology known as "lighthouse" tracking, which is ...



LLVD & BLVD in Base Station Power Cabinets

LLVD is a power management mechanism that automatically disconnects the load (i.e., base station equipment) when the power system detects that the ...



Contact Us

For catalog requests, pricing, or partnerships, please visit:
<https://bringmethehorizon.eu>