



SolarMax Pro Energy Storage Systems

How to connect the external power supply to the battery cabinet





Overview

How do I connect a battery cabinet to an ups?

Connect the DC+ and DC- cables to the DC+ and DC- terminals. Connect the power cables in the UPS. If more battery cabinets are part of the solution, connect all battery cabinets to the UPS according to the diagram below.

How do you connect a battery to a cabinet?

Route the ground wire (from the field kit) from the ground stud in one battery cabinet, under the lower battery tray and through the cabinet-to-cabinet cable access area in the side of the cabinets, and attach to the ground stud in the other battery cabinet (see Figure 4-4). Hardware is provided on each ground stud.

Where should a battery cabinet be installed?

If the battery cabinet is installed adjacent to the UPS, the recommended installation location for the battery cabinet is on the right side of the UPS cabinet. This location will allow for future expansion using an external module. Cabinets can be permanently bolted to the floor or left standing on leveling feet.

Where is ground wire installed in a ups cabinet?

ground wire is installed between all cabinets. All conduits and cables are properly routed to the battery cabinets. ground conductor is properly installed to the UPS cabinet. Battery cables are terminated on the E4 (+) and E5 (-) terminals in the UPS cabinet. Internal battery cabinet connections such as cables and plugs have been completed.

How is a ups cabinet installed?

Each cabinet in the battery system is placed in its correct location. cabinet grounding/mounting kit is installed between any cabinets that are bolted together. ground wire is installed between all cabinets. All conduits and cables



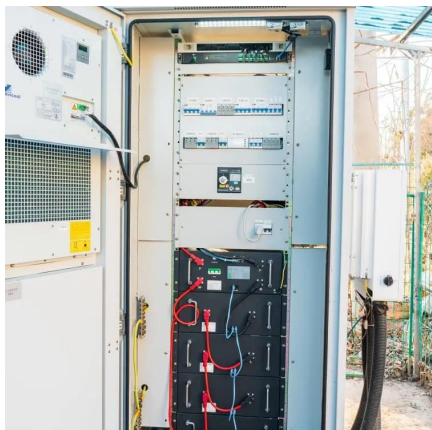
are properly routed to the battery cabinets. ground conductor is properly installed to the UPS cabinet.

How do I install a 9395 model 1085 Battery Cabinet?

The 9395 Model 1085 battery cabinet is designed to be installed in a standalone configuration using two to four battery cabinets. Power wiring is installed externally between each battery cabinet and the UPS or battery disconnect using conduit. Battery cabinets may be installed adjacent to the UPS or in a separate location.



How to connect the external power supply to the battery cabinet

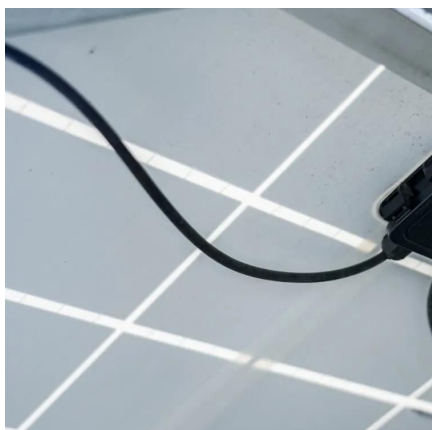


[Vertiv™ Liebert® ITA2 Battery Cabinet](#)

Connect a battery-to-battery cable to Connector B on the first cabinet in the previous string, and to Connector A on first cabinet in the additional string. Connect the second string in additional ...

Liebert® EXS External Battery Cabinet Installer/User Guide

For battery cabinets that are connecting to a Vertiv™ Liebert® EXS UPS, see Figure 2.1 on page 8, cables will run from the positive, negative and neutral busbars of the adjacent battery ...



[Avaya maintenance bypass owner's manual](#)

The entrance panel contains knockout openings for entrance and exit conduits and for conduit to an optional external battery cabinet. The entrance panel is located on the top 3-slot section for ...

[Liebert® ITA2 Battery Cabinet Installer/User Guide](#)

The battery cabinet may be installed in a rack or tower configuration, and a maximum of five



battery strings can be connected to the UPS.
When introduced, the battery cabinet was 3U ...



/15/20KVA UPS Battery Cabinet Installation and Operation ...

Connection to the Vanguard External Battery shall be made by qualified SERVICE PERSONNEL only. Installation or replacement of batteries must be located in a SERVICE ACCESS AREA: ...

How to connect the solar power supply of the express ...

To effectively connect the solar power supply of the express cabinet, one must follow specific steps regarding installation, wiring, and ...



Powering Alternatives for Arduino Boards

Learn more about the power pins and connectors of Arduino® boards in this article, their main characteristics, and how to use them correctly.



R30iB Mini Plus Cabinet Robot IO

Looks like I need to connect an external 24VDC power supply to the cabinet to power my device based on the manuals. To connect the external power supply, should it be ...



Eaton Samsung Gen 3 Battery Cabinet Installation and ...

The Eaton® Samsung Gen 3 Battery Cabinet provides power for energy storage and emergency backup power for the Eaton Uninterruptible Power Supply (UPS) systems to enhance the ...

Connect the Power Cables

Connect the DC+ and DC- cables to the DC+ and DC- terminals. Connect the power cables in the UPS. If more battery cabinets are part of the solution, connect all battery cabinets to the UPS ...



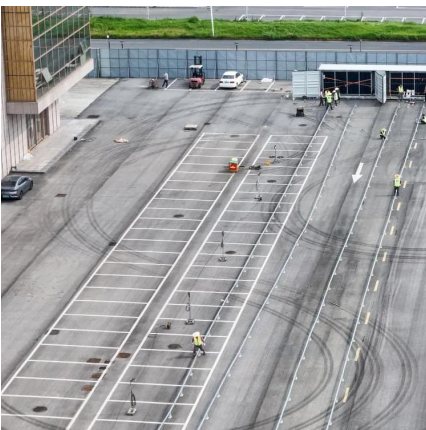
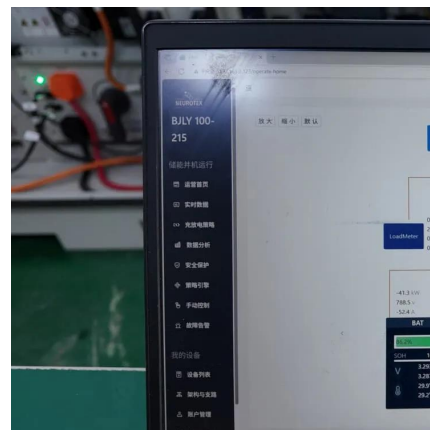
[SolaHD S4K-D External Battery Cabinet QIG Manual PDF](#)

Connect the battery cable accessory to one end of the battery port on the rear panel of the UPS and connect the other end to any battery port on the rear panel of the EBC.



Eaton 93PS [53/104] Installing ups external battery cabinet

Note ups power upgrading is possible only if the sizing of the external cables is sufficient alternatively the external cabling must be upgraded as well fuses are of the type gg40



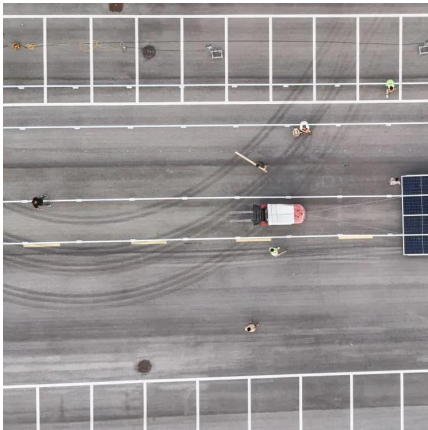
Vertiv Liebert External battery cabinet

Scalable runtime options with matching auto-detection external battery cabinets provide additional flexibility when extended uninterrupted power is required. ...

CONNECTING EXTERNAL BATTERY CABINET

The portable power supply is perfect if you lose power or need to charge or use your devices away from home. You will be able to use some power, but it might not be enough to operate ...





164201687_1085_Rev_4_Web

This manual contains important instructions that you should follow during installation and maintenance of the UPS and batteries. Please read all instructions before operating the ...

[Guide to powering the Raspberry Pi Pico](#)

This page will cover all you need to know about powering the Raspberry Pi Pico, or using the Pico to power external circuits. It will help you to understand ...



External Battery Cabinets

By clicking "Accept All", you agree to the storing of cookies on your device to enhance site navigation, analyze site usage, and assist in our marketing efforts.

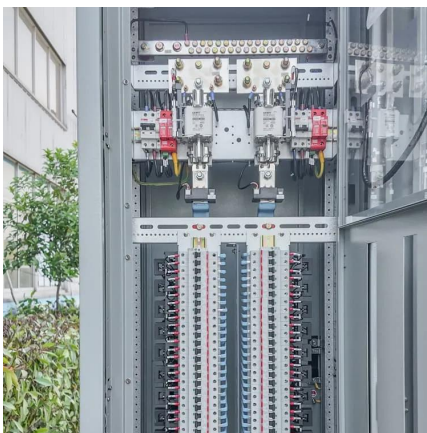
Connect Cables to the External Supply for Lithium-ion Battery ...

Depending on your chosen configuration, the 1250 kW I/O cabinet may not have the battery control breakers preinstalled. If needed, the Galaxy VX Lithium-ion BMS Power Supply Kit ...



[How To Ground Electrical Enclosure: The Complete Guide](#)

Proper electrical enclosure grounding is a vital facet for providing safety, performance and uptime. However, it is always easy to overlook grounding aspects, or to fix ...



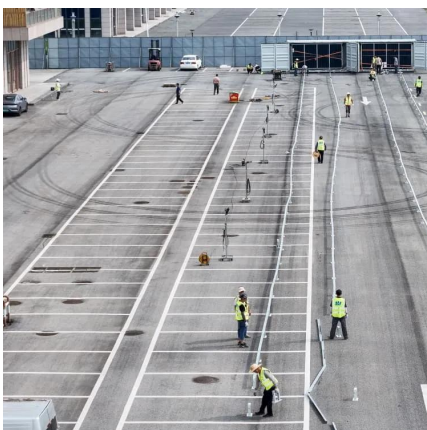
How to do UPS Battery Wiring?

Learn how to wire UPS batteries safely with our detailed step-by-step guide. From installation location to proper battery connection and wiring tips, ensure a secure and efficient UPS setup ...



[How to use external power supply for Arduino](#)

How to connect to the external power supply In these cases, we MUST use the external powers for sensors/devices. To use multiple power source, it need to ...





Contact Us

For catalog requests, pricing, or partnerships, please visit:
<https://bringmethehorizon.eu>