



SolarMax Pro Energy Storage Systems

How powerful is a 12v inverter





Overview

The 12V inverter is suitable for lower power needs, typically up to 1,500 watts, and is ideal for small appliances and devices. It draws more current from the battery to deliver the required power, which can be a limitation if you're running multiple devices or larger appliances.



How powerful is a 12v inverter

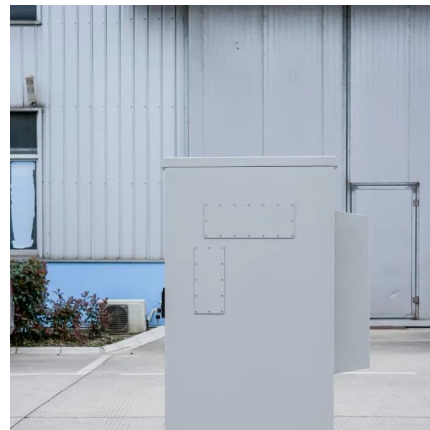


What does a power inverter do, and what can I use one for?

The inverter draws its power from a 12 Volt battery (preferably deep-cycle), or several batteries wired in parallel. The battery will need to be recharged as the power is drawn out of it by the ...

[Renogy Inverter P2 2000W Pure Sine Wave Inverter...](#)

About this item ?POWERFUL DC-AC?This 2000 watt inverter is perfect for solar systems. The power inverter 12V to 110V provides 2000 watt ...



[12V VS 24V Inverter: What are the Differences and ...](#)

Ultimately, the choice between a 12V and a 24V inverter depends on your specific power needs, budget, and long-term plans for your energy system. For smaller ...

[What Is A 12V Inverter And Where Is It Used?](#)

Pure sine wave models replicate grid power, while modified sine wave suits basic tools.



Technically, inverters use high-frequency switching (15-50kHz) to chop DC into AC. For ...



12V Inverter vs 24V Inverter -- What Is The Difference & Which ...

Choosing between a 12V or 24V inverter depends on your system size, costs, and efficiency needs. 12V inverter suit small setups like RVs, while 24V inverter are more efficient for ...

5 Things You Need to Know About 12V Inverters , L& T-SuFin

This AC power is used to operate various electrical devices. 12V Inverters are commonly used in small cars, boats, and in homes and small businesses appliances as the ...



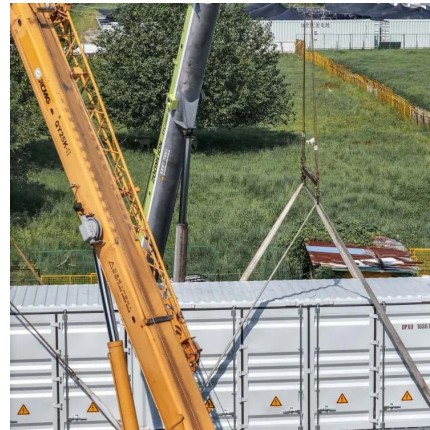
12 Volt DC Power Inverter: In-Depth Learning and Buying Guide

Recommended Power Range: 1000W - 2000W inverters, depending on the total power draw of essential devices. By choosing the right 12V inverter for your specific needs, ...



Exploring the Best 12V Power Inverters: A Comprehensive Guide

At its core, a power inverter takes the steady DC voltage from a battery and modifies it to AC voltage suitable for powering standard outlets. It does this by rapidly switching the power from ...



[How Does A 12V To 110v Inverter Work? - leaptrend](#)

Have you ever wondered how a 12V to 110V inverter operates? An inverter is a remarkable device that converts low-voltage direct current into high-voltage alternating current. ...

[Understanding the Wiring Diagram of a 12v Inverter](#)

A 12v inverter is a device that converts the 12-volt direct current (DC) power from a battery or other power source into alternating current (AC) power, typically at 120 volts or 220 volts.



[The Best 12V Power Inverters for DIY Campervans ...](#)

It can be tough to find the best power inverter for your DIY campervan. Read our epic guide to inverters for everything you need to know ...



Frequently Asked Questions about Inverters

There is a simple method to calculate how much power your inverter is using: For 12-volt inverters, divide the connected load by 10; for 24-volt inverters, divide by 20.



Exploring the Best 12V Power Inverters: A...

At its core, a power inverter takes the steady DC voltage from a battery and modifies it to AC voltage suitable for powering standard outlets. It does this by ...

5 Things You Need to Know About 12V Inverters , L& T-SuFin

Inverters have an idle power usage. A Victron 48/5000 burns 30W just by being powered on. That's 0.72kWh/day or 60Ah of 12V battery capacity ...





12V vs 24V Inverter: What's The Difference & Which is Better

Torn between 12V and 24V inverters? Discover the key differences in efficiency, cost, and power capacity to determine which is better for your energy needs.

12 Volt Battery Run Time Calculator

Do you have a 12v device you need to power but don't know what 12-volt battery you need? For those running a continuous 12-volt load, an adequately sized deep-cycle ...



Big inverters vs smaller inverters

Inverters have an idle power usage. A Victron 48/5000 burns 30W just by being powered on. That's 0.72kWh/day or 60Ah of 12V battery capacity - would kill a medium size ...

12V VS 24V Inverter: What are the Differences and How to Choose

Ultimately, the choice between a 12V and a 24V inverter depends on your specific power needs, budget, and long-term plans for your energy system. For smaller applications, a 12V system ...



12V vs 24V Inverters Key Differences and Which One is Right for ...

The 12V inverter is suitable for lower power needs, typically up to 1,500 watts, and is ideal for small appliances and devices. It draws more current from the battery to deliver the ...



[How DC/AC Power Inverters Work](#), [HowStuffWorks](#)

Power inverters convert direct current (DC), the power that comes from a car battery, into alternating current (AC), the kind of power supplied to your home and the power ...



Contact Us

For catalog requests, pricing, or partnerships, please visit:
<https://bringmethehorizon.eu>