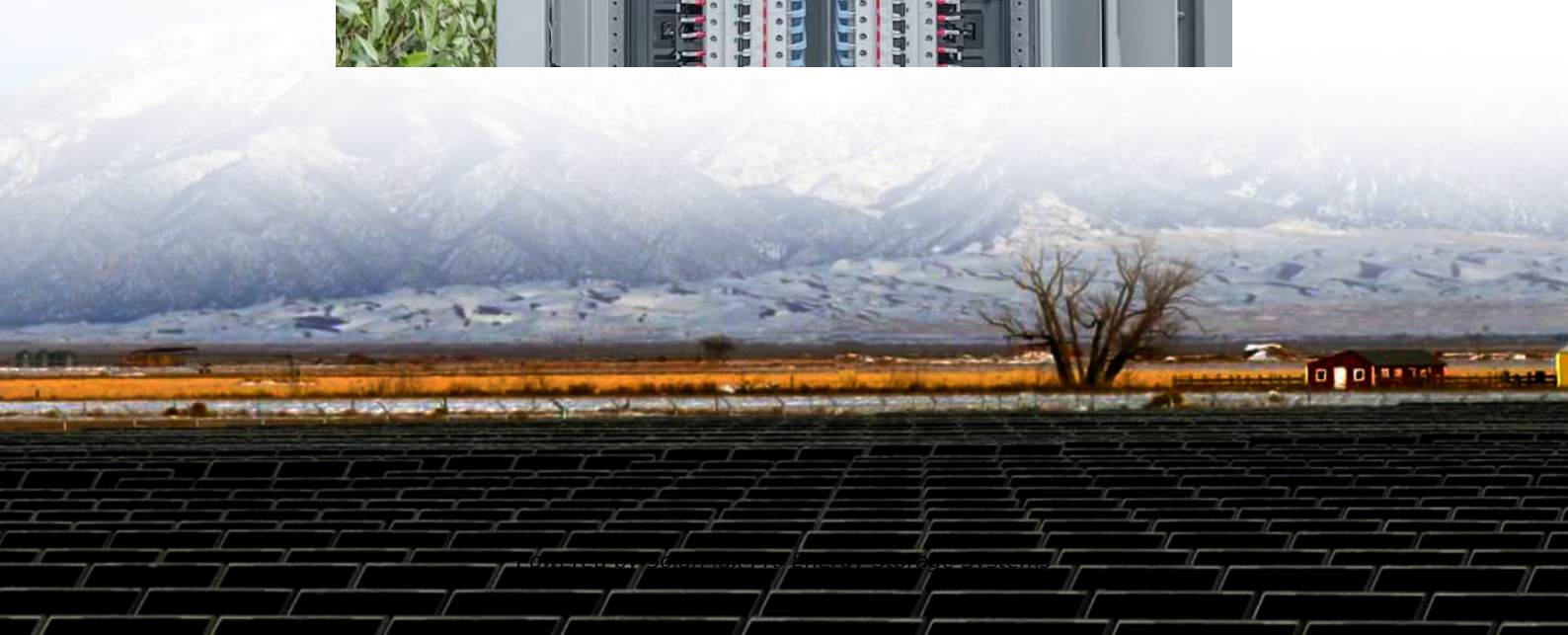




**SolarMax Pro Energy Storage Systems**

# **How much watt should I choose for a solar panel inverter**





## Overview

---

### What size solar inverter do I Need?

A 4.5 kW array (or ten 450-watt solar panels) would just about cover your consumption. The type of solar panels you choose can also impact the size of the inverter you need. Different types of solar panels have different wattage ratings and efficiency levels. The three main types of solar panels are monocrystalline, polycrystalline, and thin film.

### Should your inverter size match your solar panel size?

Match your inverter to your lifestyle, not just your roof. If you're running a fridge, home office, and PS5 all day, size accordingly. If you're barely home, go leaner. Here's the cheat code: your inverter size should usually match your solar panel system's size in kilowatts.

### Why should you choose a solar inverter size?

Inverters play a vital role in converting the direct current (DC) generated by your solar panels into usable alternating current (AC) for your home. Selecting the proper inverter size ensures that your solar system operates at its full potential, ultimately impacting energy savings and system longevity.

### How to choose a solar inverter?

Choose an inverter that has a surge watt rating equal to or greater than this value. As for voltage drop, check the wire length between your solar panels and the batteries. If the wire length is long, you may need to choose a lower voltage system (12V, 24V, or 48V) to minimize voltage drop.

### Can I use multiple inverters for my solar panel system?

A: Yes, you can use multiple inverters for your solar panel system, commonly known as a micro-inverter system. This setup allows each solar panel to have its own inverter, optimizing performance and allowing for better energy production, especially in situations where panels may be shaded or facing



different directions.

How do I choose the right inverter size?

When considering an inverter's size, it's important to understand the difference between surge power, which is the peak power needed to start a device, and continuous power, the amount required to keep it running. These factors play a significant role in determining the right inverter size for my setup.



## How much watt should I choose for a solar panel inverter

---



### [How to Calculate Solar Panel Battery and Inverter: ...](#)

Avoiding common mistakes when calculating solar panel battery, inverter, and system size will help you ensure a proper design of your solar ...

### [Solar Inverter Sizing Guide for Maximum Efficiency](#)

In most cases, the inverter size should be close to the size of your solar panel system, within a 33% ratio. For example, a 6.6kW solar array often ...



### **Solar Panel Inverter Size Calculator: Know What You Need , Angi**

Planning to install solar panels? You'll need a solar inverter. Follow this guide to calculate the best solar panel inverter size for your system.

### **Solar Panel vs Inverter: Which is Better for Your Solar ...**

Solar Panel vs. Inverter: It's About Balance, Not "Better" The real question isn't which is





better--it's how to match them for optimal performance. ...



## How to Choose the Right Size Solar Inverter: Step-by-Step with ...

Wondering what size solar inverter do I need for your solar system? This guide walks you through calculating inverter size based on panel capacity, power usage, and safety ...

## What Size Solar Inverter Do I Need? Experts Break It ...

Here's the cheat code: your inverter size should match your solar panel output. If your system pushes 5,000 watts, a 5,000-watt (or 5 kW) ...



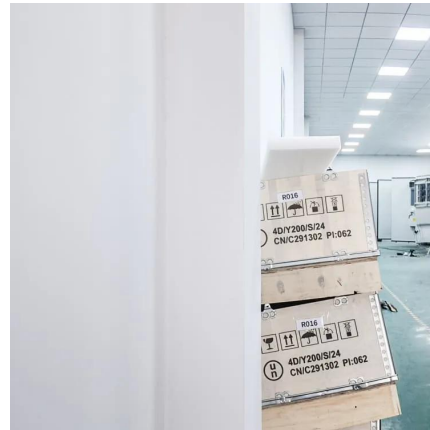
## Solar Inverter Sizing Guide for Maximum Efficiency , Mingch

In most cases, the inverter size should be close to the size of your solar panel system, within a 33% ratio. For example, a 6.6kW solar array often pairs with a 5kW inverter to ...



## [Best Solar Inverters for Homeowners in 2025](#)

Best new inverter: Q Cells Q.Tron AC solar module with built-in inverter The Q.Tron AC module is actually a solar panel with a built-in microinverter. And, since we named ...



## [How Many Inverters Per Solar Panel? Don't Miss This ...](#)

When installing a solar panel system, understanding the role of inverters is crucial. Solar inverters convert the DC electricity from your panels ...

## [What Size Inverter Do I Need for a 100 Watt Solar ...](#)

However, do not install an inverter that is much larger than the probability of the solar panels, as this may also reduce the efficiency of the ...



## [How To Size A Solar Inverter in 3 Easy Steps](#)

We explain the key concepts that determine solar inverter sizing including your power needs, the type and number of solar panels you need, and the length of your wires.



### What size inverter for 100 watt solar panel?

For a 100-watt solar panel, the ideal inverter size is within the 300 to 600-watt range, specifically a 12V DC to 220V AC model. This is crucial because the inverter serves as ...



### What Size Inverter Do I Need for My Solar Panel ...

The inverter wattage you need should be adjusted according to the expected efficiency of your solar panel system, taking into account your ...

### Solar inverter sizing: Choose the right size inverter

A solar power inverter is an essential element of a photovoltaic system that makes electricity produced by solar panels usable in the home. It is responsible for converting the direct current ...





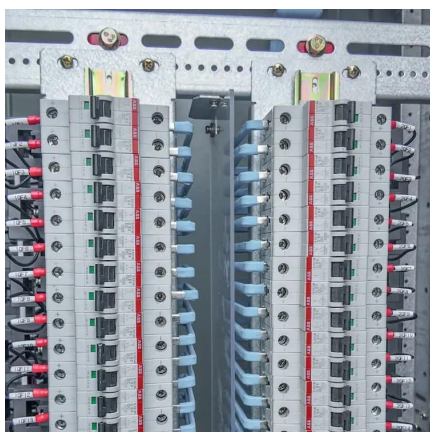


## [How to Choose the Right Solar Inverter in 2025: A ...](#)

We leverage our expertise to help you make informed decisions, ensuring your solar system delivers peak performance. This guide will help ...

## **Solar Inverter Efficiency Ratings+Factors Affecting Inverter**

Why Efficiency Ratings Matter Efficiency rating is a big deal in selecting a solar inverter, so as to be able to choose the best quality. These show just how well the inverter ...



## [How To Size A Solar Inverter in 3 Easy Steps](#)

To help you choose the right size solar inverter and matching battery, a solar inverter size selection comparison table is provided below. ...

## [How To Size an Inverter: Solar Inverter Sizing Explained](#)

When sizing an inverter, calculate the total wattage needed and understand surge vs. continuous power. Choose the right size with a 20% safety margin. Factor in simultaneous ...





## What Size Solar Inverter Do I Need? Experts Break It Down

Here's the cheat code: your inverter size should match your solar panel output. If your system pushes 5,000 watts, a 5,000-watt (or 5 kW) inverter is usually the move.



### [What size inverter do I need for solar panels](#)

Solar inverter sizing guidelines typically suggest that the inverter's rated capacity be around 80% to 100% of the total peak wattage of the solar ...



## How to Choose the Right Solar Inverter in 2025: A Complete ...

We leverage our expertise to help you make informed decisions, ensuring your solar system delivers peak performance. This guide will help you navigate your options to ...





### [what size inverter for 200 watt solar panel](#)

Choosing the right inverter for a 200-watt solar panel system is essential for ensuring efficient energy conversion and reliable power delivery. This guide will help you ...

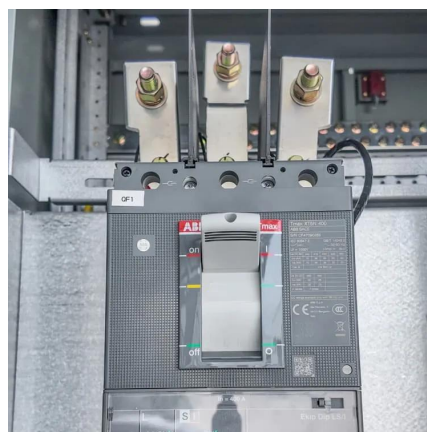


### [What Size Inverter You Need \(Calculations + Battery\)](#)

A small inverter is suitable for running appliances with a total load of 1000W, while bigger loads might require either a larger inverter or a generator. Aside from the inverter itself, ...

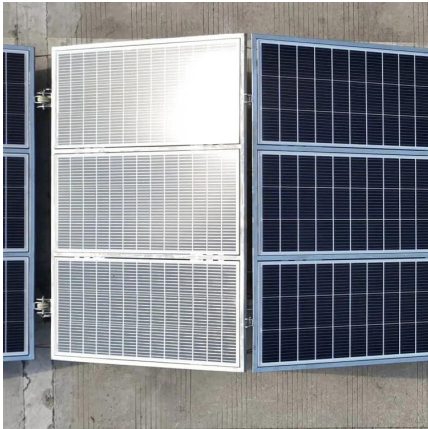
### [What Size Inverter Do I Need for a Solar Panel System?](#)

To help you choose the right size solar inverter and matching battery, a solar inverter size selection comparison table is provided below. This table will help you quickly ...



### [How To Size an Inverter: Solar Inverter Sizing Explained](#)

When sizing an inverter, calculate the total wattage needed and understand surge vs. continuous power. Choose the right size with a 20% ...



### What Size Inverter You Need (Calculations + Battery)

A small inverter is suitable for running appliances with a total load of 1000W, while bigger loads might require either a larger inverter or a generator. ...



### What size inverter do I need for solar panels

Solar inverter sizing guidelines typically suggest that the inverter's rated capacity be around 80% to 100% of the total peak wattage of the solar panels. This range helps ...

### Choosing the Right Size Inverter for Your Solar ...

As a general rule of thumb, you'll want to match your solar panel wattage. So if you have a 3000 watt solar panel system, you'll need at least a 3000 watt ...





## How Many Batteries & Solar Panels for 10KW Inverter - PowMr

This guide helps you size and match batteries and solar panels for a 10kW inverter system, and provides tips for safe array connections.

### How does sizing a solar inverter work?

How to determine inverter size Solar inverters come in all different sizes, big and small. Similar to solar panels, the size of an inverter can be ...



## Contact Us

---

For catalog requests, pricing, or partnerships, please visit:  
<https://bringmethehorizon.eu>