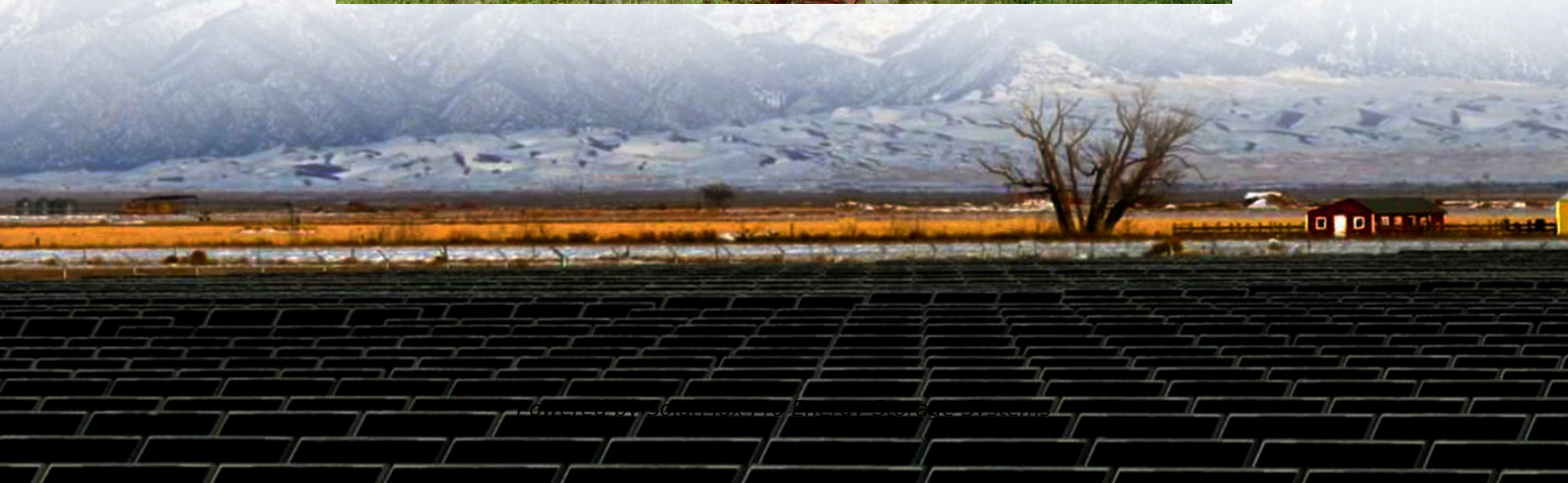




**SolarMax Pro Energy Storage Systems**

# **How much voltage should I choose for outdoor power supply**





## Overview

---

What voltage should a residential outdoor outlet be?

For residential outdoor outlets, the typical voltage is either 120V or 240V, depending on the appliances or equipment connected. Ensure that the wire you select can handle the expected voltage. Ampacity refers to the maximum amount of current (measured in amperes) a wire can safely carry.

How do I choose a wire for an outdoor outlet?

Several factors need to be taken into account before selecting wire for an outdoor outlet. These include the environment in which the wire will be placed, the load requirements, and compliance with safety standards. Outdoor outlets need wire that is resistant to moisture, UV rays, and temperature extremes.

How many amps should a wire have?

Choosing a wire with the correct ampacity ensures that it won't overheat under normal usage. For outdoor outlets, this typically ranges from 15 to 30 amps, depending on the power requirements of the devices you intend to plug in. All outdoor electrical wiring must meet specific standards to ensure safety.

How to choose electrical wire for outdoor use?

The primary goals when selecting wire for outdoor use are: Durability: The wire must be able to withstand exposure to the elements. Safety: It should prevent electric shock or fires. Compliance: It must meet local electrical codes and standards. 2. Key Considerations for Choosing Outdoor Electrical Wire.

What type of outdoor outlet should I Choose?

The power requirement of the devices you plan to use also determines the type of outdoor outlet you should choose. If you're planning on operating high-wattage appliances, a higher amp outdoor outlet would be required. In dealing with outdoor electricity, safety is paramount. Here are some safety measures



to consider:.

Why should you choose outdoor electrical wire?

These include the environment in which the wire will be placed, the load requirements, and compliance with safety standards. Outdoor outlets need wire that is resistant to moisture, UV rays, and temperature extremes. For this reason, outdoor electrical wire is usually coated with materials that can handle these harsh conditions.



## How much voltage should I choose for outdoor power supply

---



### [How to choose the right LED driver for your LED light?](#)

Introduction The LED power supply can convert the 220v AC power into low-voltage power with positive and negative poles, and then supply power to low ...

### [Calculate Right: Perfect Transformer Size for ...](#)

Choosing the right size transformer will ensure your system has sufficient capacity to handle your lighting needs. A transformer is an electrical ...



### [Right Outdoor Power Configuration: Choose the Best Setup](#)

Find the right outdoor power configuration for your needs. Learn about amperage, voltage, and safety to ensure efficient power distribution.

### [How to choose the best PC power supply](#)

A power supply with an efficiency rating of 80 percent provides 80 percent of its rated wattage as power to your system, while losing the other





20 percent as heat.



## Calculate Right: Perfect Transformer Size for Landscape Lights

Choosing the right size transformer will ensure your system has sufficient capacity to handle your lighting needs. A transformer is an electrical device consisting of two coils of ...



## What Type of Wire for Outdoor Outlet: A Comprehensive Guide

For residential outdoor outlets, the typical voltage is either 120V or 240V, depending on the appliances or equipment connected. Ensure that the wire you select can ...



## PSU buying guide: how to choose the right power supply , Digital ...

The power supply is a crucial component in your PC, but it can be a little confusing. Here's how to pick the best one for your needs.





## Low-Voltage Landscape Lighting Wire Sizing Guide

For your low-voltage landscape lighting, our guide ensures you select the ideal wire gauge size. Learn to calculate total wattage, measure run ...



## What Are the Guidelines for Outdoor Wiring?

In an outdoor wiring application, you use line-voltage circuits to power receptacles (outlets) and standard light fixtures. Low-voltage wiring is ...

## **What is the voltage of outdoor energy storage power supply?**

Understanding the voltage specifications of outdoor energy storage units is essential for maximizing their performance and ensuring safe operation. The following sections ...



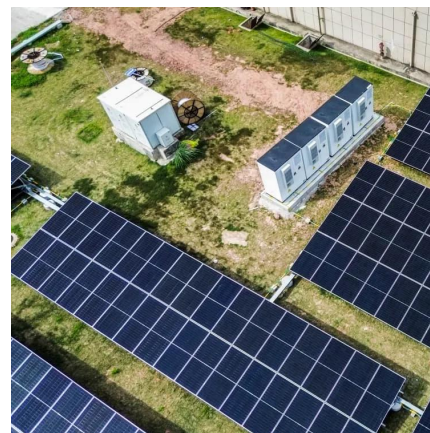
## Everything You Need to Know About Outdoor Outlets

Choosing the best outdoor outlets for your needs should involve some careful considerations such as your anticipated power usage, the number of devices you plan to ...



## How to Choose the Best Charging Method for an Outdoor Power Supply

Below, we will introduce several common outdoor power supply methods and their typical application scenarios to help you make an informed decision for your next camping trip, ...



## How to Choose the Best Charging Method for an Outdoor Power Supply

The UPS should support multiple power inputs, including AC mains, solar, vehicle power (12V/24V), or PD fast charging, offering flexible deployment in diverse environments. Use ...

## [How to Choose Suitable Outdoor Power Outlets](#)

For better performance and safety in outdoor spaces, it is vital to select the most appropriate outdoor power points. This manual is a complete guide for outdoor power outlets, ...





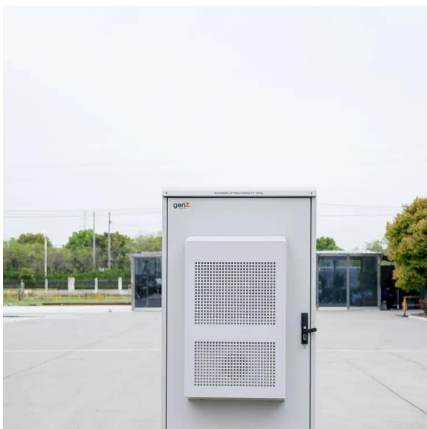
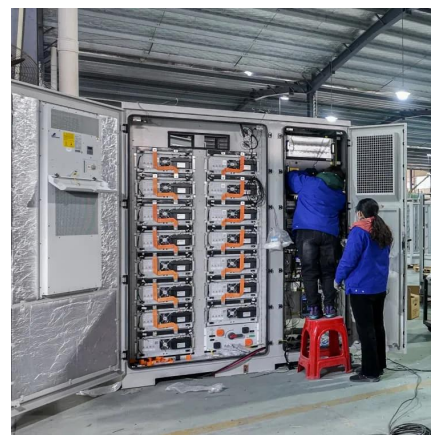


## How to Choose the Best Charging Method for an Outdoor Power ...

Below, we will introduce several common outdoor power supply methods and their typical application scenarios to help you make an informed decision for your next camping trip, ...

### [Choosing the Right Voltage for Outdoor Garden Outlets](#)

The right voltage ensures that your outdoor appliances operate correctly and minimizes the risk of electrical hazards. This article explores the factors to consider when ...



## CCTV 101: Camera Power Explained

When it comes to CCTV camera power, there are a variety of options to choose from, ranging from low voltage 12 Volts DC and 24 Volts AC options to single-line solutions such as Power ...

### [How powerful of a UPS should I get? : r/buildapc](#)

Best practice is to get a UPS that can run your system at load for 5-10 minutes. That system will probably draw around 400 watts at load. So you'll need a ...





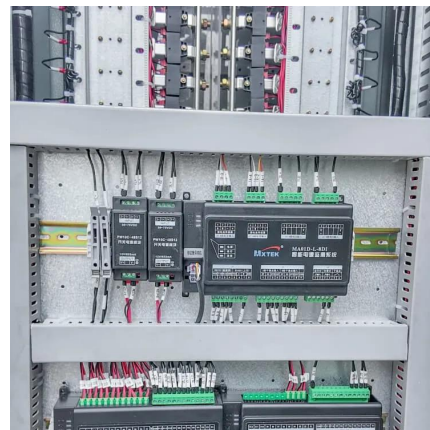
### What Type of Wire for Outdoor Outlet: A ...

For residential outdoor outlets, the typical voltage is either 120V or 240V, depending on the appliances or equipment connected. Ensure that the ...



### Choosing the right size power supply for your radio

How do you power a mobile radio for use as a base station? Get a power supply. But this isn't a cut and dry, one-size-fits-all sort of thing. ...



### What Size Landscape Lighting Transformer to Use to ...

As a professional landscape lighting designer looking to install and operate a new low voltage lighting system, you need to consider what transformer will be ...





## How to Choose Suitable Outdoor Power Outlets

For better performance and safety in outdoor spaces, it is vital to select the most appropriate outdoor power points. This manual is a complete ...

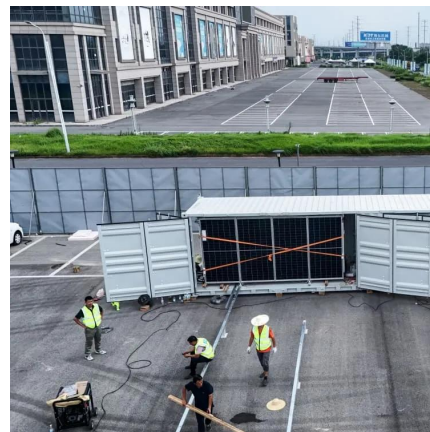


## Which voltage should you use for LED strips? , Any-lamp

Which voltage should you use for LED strips? When installing a LED strip at home or in a professional setting, one of the first questions to ask yourself is: which voltage should I ...

## What Are the Guidelines for Outdoor Wiring?

In an outdoor wiring application, you use line-voltage circuits to power receptacles (outlets) and standard light fixtures. Low-voltage wiring is found on most conventional ...



## Contact Us

For catalog requests, pricing, or partnerships, please visit:  
<https://bringmethehorizon.eu>