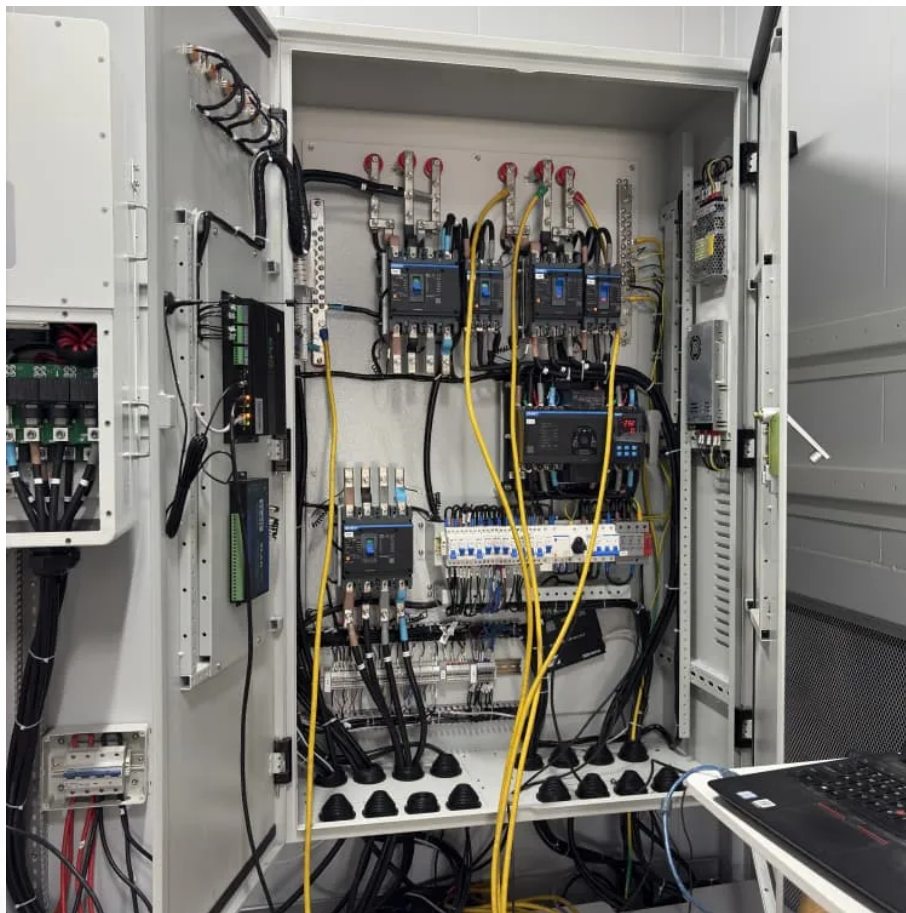




SolarMax Pro Energy Storage Systems

How much power does a mobile base station have





Overview

How do base stations affect mobile cellular network power consumption?

Base stations represent the main contributor to the energy consumption of a mobile cellular network. Since traffic load in mobile networks significantly varies during a working or weekend day, it is important to quantify the influence of these variations on the base station power consumption.

How much power does a 5G base station consume?

That's almost a threefold increase compared to 4G (5). One 5G base station is estimated to consume about as much power as 73 households (6), and 3x as much as the previous generation of base stations (5), (7).

Are 5G base stations causing more energy consumption?

However, Li says 5G base stations are carrying five times the traffic as when equipped with only 4G, pushing up power consumption. The carrier is seeking subsidies from the Chinese government to help with the increased energy usage.

Does China Mobile have a 5G base station?

China Mobile has tried using lower cost deployments of MIMO antennas, specifically 32T32R and sometimes 8T8R rather than 64T64R, according to MTN. However, Li says 5G base stations are carrying five times the traffic as when equipped with only 4G, pushing up power consumption.

Is there a direct relationship between base station traffic load and power consumption?

The real data in terms of the power consumption and traffic load have been obtained from continuous measurements performed on a fully operated base station site. Measurements show the existence of a direct relationship between base station traffic load and power consumption.



What is the largest energy consumer in a base station?

The largest energy consumer in the BS is the power amplifier, which has a share of around 65% of the total energy consumption . Of the other base station elements, significant energy consumers are: air conditioning (17.5%), digital signal processing (10%) and AC/DC conversion elements (7.5%) .



How much power does a mobile base station have



INVESTIGATORY ANALYSIS OF ENERGY REQUIREMENT OF A MULTI-TENANT MOBILE

This study examines the energy requirements of a multi-tenant BTS, focusing on power consumption patterns, key energy-intensive components, and optimization strategies.

47 CFR § 27.50

This limit applies to the aggregate power of all antenna elements in any given sector of a base station. (2) The power of each fixed or base station transmitting in the 3450-3550 MHz band ...



Size, weight, power, and heat affect 5G base station designs

Electricity currently is 5% to 6% of a mobile operator's opex, according to MTN Consulting [Ref. 1]. Energy use will increase dramatically with 5G because a typical gNodeB ...

5G base stations use a lot more energy than 4G base ...

A typical 5G base station consumes up to twice or more the power of a 4G base station, writes



MTN Consulting Chief Analyst Matt Walker in a ...



Cell sites and cell towers in a mobile cellular network

The radio base station is installed at a mobile operator's site, also known as a "cell site". The electricity powers it, and this power determines ...



Understanding Mobile CB Radio Usage in Homes : Cobra ...

Yes, a mobile CB can be used as a base station. You will need a DC power supply and a base station antenna. The power supply should have an output between 12 to 14 volts ...



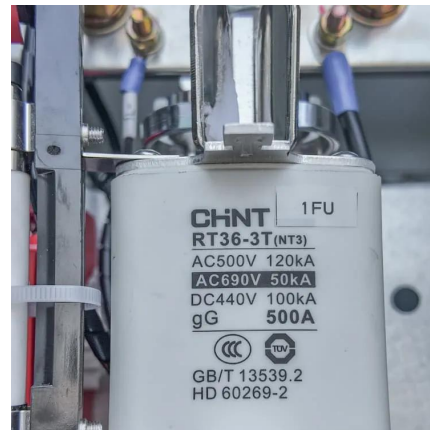
A technical look at 5G energy consumption and performance

What's enough power for a base station? I'm looking at putting a small base station into the kitchen of our ranch home for communicating with the HTs outside. Distance is usually within a ...



Cordless Phone Base Station Power Consumption & Electricity ...

Cordless Phone Base Station Power Consumption, Wattage, and Cost Calculator Use our Cordless Phone Base Station calculator to determine the power consumption, wattage, and ...

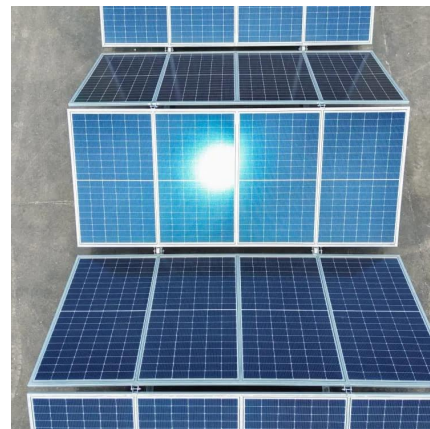


How to convert a mobile radio to a home base station? : r/gmrs

This is one of those times where the ham radio answer is the same as the GMRS answer. A "mobile radio" and a "base station" in this case is only a matter of terminology. And what you ...

How much power does 5G consume?

One 5G base station is estimated to consume about as much power as 73 households (6), and 3x as much as the previous generation of base stations (5), (7). When base stations, data centers ...



5G base stations use a lot more energy than 4G base stations: MTN

A typical 5G base station consumes up to twice or more the power of a 4G base station, writes MTN Consulting Chief Analyst Matt Walker in a new report entitled " Operators ...



Power Consumption: 5G Basestations Are Hungry, Hungry Hippos

Challenges of 5G deployment, according to Zhengmao Li, EVP China Mobile (biggest operator on the world). 1. 5G needs 3 X base stations for same coverage as LTE due ...



Measurements and Modelling of Base Station Power Consumption under Real

Base stations represent the main contributor to the energy consumption of a mobile cellular network. Since traffic load in mobile networks significantly varies during a working or weekend ...

[How much power does my Starlink need?](#)

The power utilization can vary depending on the temperature, location, and utilization of the Starlink. Starlink for RVs does not come with a mobile power source (e.g., generator).



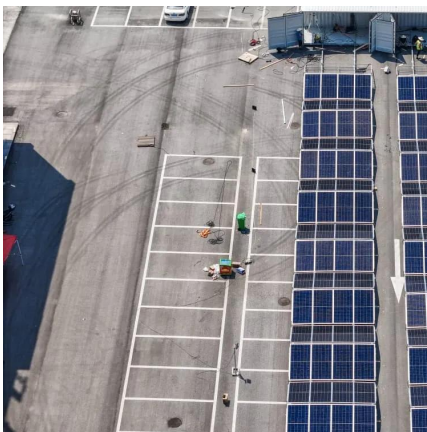


Why bother to have a high power base station when mobile units ...

There are 8 time slots, the base station transmits its 30-40 W in all of them, while the mobile transmits its 2 W in only one. So the ~12 dB difference remains, if you look at power in ...

5G Base Station Deployments; Open-RAN Competition & HUGE 5G BS Power

In order to ensure the signal strength, the power must be increased. In order not to be blocked by walls, many base stations must be densely placed in the cell to avoid being ...



[What's enough power for a base station? : r/gmrs](#)

What's enough power for a base station? I'm looking at putting a small base station into the kitchen of our ranch home for communicating with the HTs outside. Distance is ...

[Measurements and Modelling of Base Station Power ...](#)

Base stations represent the main contributor to the energy consumption of a mobile cellular network. Since traffic load in mobile networks significantly varies during a working or weekend ...



How a 5G cell tower works , Deutschland spricht über 5G

Base stations, or mobile communications base stations, are stationary radio or mobile communications installations essentially consisting of two elements: (1) ...



Power limits

95.1767 (a) (1) - "The transmitter output power of mobile, repeater and base stations must not exceed 50 Watts." [As measured with properly calibrated equipment at the ...



[Front Line Data Study about 5G Power Consumption](#)

Facebook Twitter LinkedIn The two figures above show the actual power consumption test results of 5G base stations from different manufacturers, ...





Do Cell Phone Towers Cause Cancer? , American Cancer Society

Base station antennas use higher power levels than other types of land-mobile antennas, but much lower levels than those from radio and television broadcast stations.



Size, weight, power, and heat affect 5G base station ...

Electricity currently is 5% to 6% of a mobile operator's opex, according to MTN Consulting [Ref. 1]. Energy use will increase dramatically ...

How Much Power Does 5G Base Station Consume? , Huijue ...

Have you ever wondered how much energy our hyper-connected world is consuming? 5G base stations, the backbone of next-gen connectivity, now draw 3-4 times more power than their 4G ...



A technical look at 5G energy consumption and performance

To understand this, we need to look closer at the base station power consumption characteristics (Figure 3). The model shows that there is significant energy consumption in the ...



Power Consumption: 5G Basestations Are Hungry, Hungry Hippos

The increased power consumption of next-generation basestations may be one of the dirty little secrets of 5G, which might not be a secret much longer as operators roll out ...



Contact Us

For catalog requests, pricing, or partnerships, please visit:
<https://bringmethehorizon.eu>