



SolarMax Pro Energy Storage Systems

How much over-capacity is appropriate for a 10kw inverter





Overview

Therefore, it is typically recommended to choose an inverter that can handle approximately 10% to 20% more than the rated output of the solar system. In other words, selecting an 11kW to 12kW inverter is the ideal choice for a 10kW solar power system. 2.What size inverter for a 10kW Solar System?

What Size Inverter For 10kw Solar System: For a 10kW solar system, you typically need an inverter with a capacity of around 10,000 to 13,000 watts to handle the output efficiently. Let's explore more how to match your solar array with the ideal inverter to get the most out of your investment.

Why should you choose a 10kW inverter?

A 10kW inverter matches your system's capacity perfectly, ensuring that you maximize the use of the solar energy generated. This setup not only optimizes performance but also enhances the longevity and reliability of your solar power system. Feel confident in selecting a 10kW inverter to get the best out of your solar investment!.

Can a 10kW solar inverter be overloaded?

For example, you can integrate a 12kW array for your 10kW solar inverter. This way, when the DC electricity generated by the solar panels inevitably goes down, it would be closer to the inverter output. Studies show that overloading your inverter can raise PV efficiency and generation. Raise your PV system generation with premium solar inverters!.

Does a 10kW solar inverter have a peak output?

Yes, ideally, the inverter's capacity should match or slightly exceed the solar system's peak output to ensure optimal energy conversion. **What Size Inverter For 10kw Solar System:** For a 10kW solar system, you typically need an inverter with a capacity of around 10,000 to 13,000 watts to handle the output efficiently.

How much solar power can a 5kw inverter produce?



Under the Clean Energy Council rules for accredited installers, the solar panel capacity can only exceed the inverter capacity by 33%. That means for a typical 5kW inverter you can go up to a maximum of 6.6kW of solar panel output within the rules.

How do I choose a solar inverter size?

To calculate the ideal inverter size for your solar PV system, you should consider the total wattage of your solar panels and the specific conditions of your installation site. The general rule is to ensure the inverter's maximum capacity closely matches or slightly exceeds the solar panel array's peak power output.



How much over-capacity is appropriate for a 10kw inverter

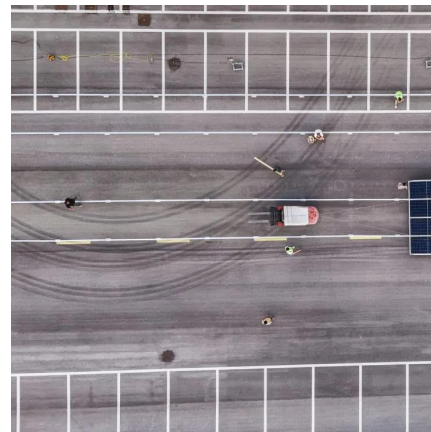
[Solar Inverter Sizing to Improve Solar Panel Efficiency](#)

To calculate the required capacity for your solar inverter, sum up the total wattage of your solar panels and adjust based on expected system ...



[Solar Panel Inverter Size Calculator Tool](#)

A solar panel inverter size calculator is a valuable tool that allows us to determine the optimal size of an inverter for our solar panel system. By ...



How to select an inverter

There are plenty of options available when it comes to selecting an inverter. Inverters vary in size, efficiency, performance, and capabilities. So what's the best solution for ...

Sizing a solar inverter

It's imperative to consult with a professional wind turbine installer or system designer to determine the appropriate inverter size for your specific

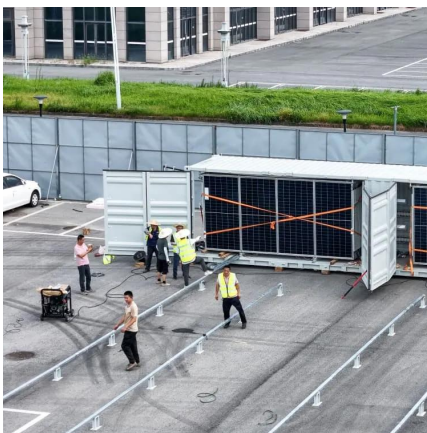


solar array and energy ...



10000 Watt DC Solar Inverters

These inverters can handle a range of power sources from 10,000 watts to 10,999 watts. Compare these 10kW solar inverters from Fronius, SMA, SolarEdge, ...



What Size Inverter For 10kw Solar System?

For example, choosing an inverter that can manage about 10-20% more than your system's capacity is a good rule of thumb. Thus, for a 10 kW system, an ...



Solar Inverter Sizing to Improve Solar Panel Efficiency

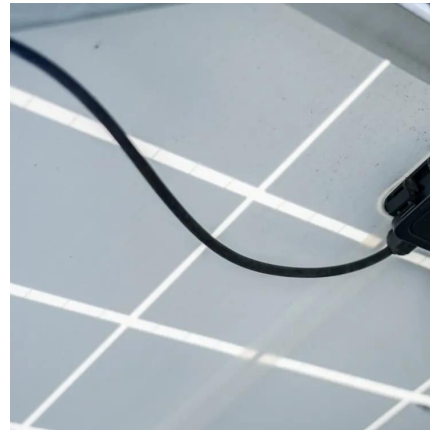
The system efficiency of your solar power system can be impacted by under-sizing or over-sizing your inverter. What are the implications of having solar panel capacity larger or ...





[How Many Batteries & Solar Panels for 10KW Inverter ...](#)

With the inverter size determined, the steps to match components to the 10kW inverter for optimal system performance will be clear and ...



What Size Inverter Do I Need?

But whether you need a big inverter or a small inverter, you can figure out the appropriate size by taking a look through our inverter size calculator. First, how much power does a power inverter ...

[Is it OK to Overpower a Solar Inverter?](#)

The easiest way to calculate what size your solar panel array should be compared to the inverter is to multiply the solar inverter's output capacity by 1.33. This way, you will be ...



[Solar Inverter Sizing Calculator: Important Guide](#)

For a 10 kW solar system, an inverter size between 8 kW to 12.5 kW is typically recommended. However, specific requirements may vary ...



Is Overloading Your Solar Inverter a Good Idea?

To compensate for this, some inverter manufacturers give you the option of overloading your device, i.e. the ability to connect a higher capacity array. For example, you ...



Size of inverter for solar power

The final size of inverter for solar power affects investment costs. The selection of inverter capacity directly affects the purchase and installation ...

Solar Inverter Sizing to Improve Solar Panel Efficiency

To calculate the required capacity for your solar inverter, sum up the total wattage of your solar panels and adjust based on expected system efficiency, shading, and the specific ...





[What Size Inverter For 10kw Solar System?](#)

For example, choosing an inverter that can manage about 10-20% more than your system's capacity is a good rule of thumb. Thus, for a 10 kW system, an inverter rated between 10 kW ...

[Oversizing Solar Panels on an Inverter](#)

Most 10kW inverters have a maximum output of 10,000W. If you oversize your solar panel array, it's not unusual that a 8000w inverter would reach 10,100W or even 10,200W.



How to Choose the Right Size Solar Inverter: Step-by-Step with ...

This guide walks you through calculating inverter size based on panel capacity, power usage, and safety margins. We use real examples from installations in Texas and ...

[Your Guide to Investing in a 10kW Solar System in ...](#)

Investing in a 10kW solar power system in Australia can be a transformative move towards energy independence and financial savings, ...



Battery for 10 kW solar panel + 10kw Solar Battery Cost

A Growatt 10kW inverter paired with a high-capacity lithium battery ensures efficient energy storage, allowing users to maximize solar usage even ...



Is Overloading Your Solar Inverter a Good Idea?

This disparity lowers the overall generation. To compensate for this, some inverter manufacturers give you the option of overloading your ...



10KW Solar System Price in Pakistan , Solar Installation

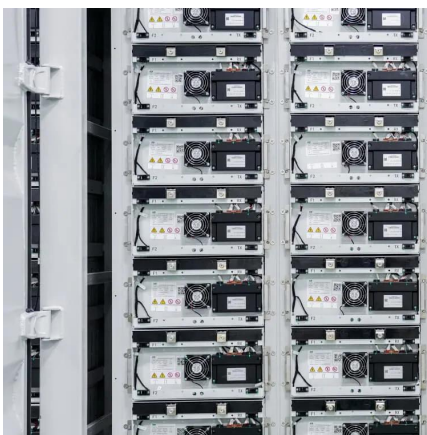
A typical 10KW solar system includes 18 solar panels, each with a capacity of 570-585 watts, along with a 10KW inverter (for grid systems) as well as all the ...





[Solar Inverter Sizing Calculator: Important Guide](#)

For a 10 kW solar system, an inverter size between 8 kW to 12.5 kW is typically recommended. However, specific requirements may vary based on panel performance, ...



[Solar Inverter Sizing Based on System Power Calculator](#)

Calculate the perfect solar inverter size for your system power with our easy-to-use Solar Inverter Sizing Calculator. Optimize efficiency and performance.

Contact Us

For catalog requests, pricing, or partnerships, please visit:
<https://bringmethehorizon.eu>