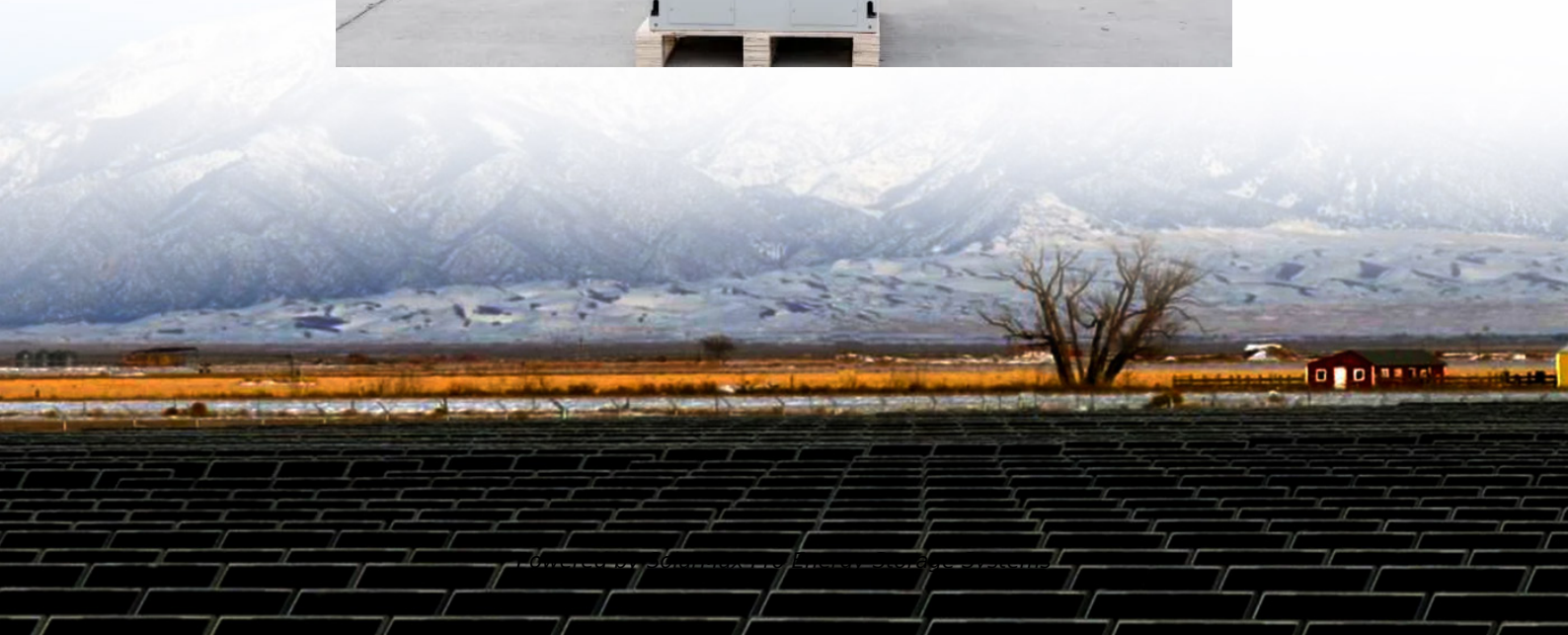




SolarMax Pro Energy Storage Systems

How much more electricity does a 5G base station consume





Overview

How much power does a 5G base station use?

“A 5G base station is generally expected to consume roughly three times as much power as a 4G base station. And more 5G base stations are needed to cover the same area,” -IEEE Spectrum, 5G’s Waveform Is a Battery Vampire.

Are 5G base stations causing more energy consumption?

However, Li says 5G base stations are carrying five times the traffic as when equipped with only 4G, pushing up power consumption. The carrier is seeking subsidies from the Chinese government to help with the increased energy usage.

Why does 5G use more power than 4G?

The data here all comes from operators on the front lines, and we can draw the following valuable conclusions: The power consumption of a single 5G station is 2.5 to 3.5 times higher than that of a single 4G station. The main factor behind this increase in 5G power consumption is the high power usage of the active antenna unit (AAU).

Which network consumes the most power in 5G?

Also, NextGalliance published a report with the below figure clearly illustrates that the RAN consumes the most power. Although RAN power consumption is reduced in 5G, it is still over 50% of the total 5G network infrastructure consumption. Another trend worth noting is the rise in data center power consumption in 5G.

Why does a ran consume more power than a 4G network?

Despite improvements in energy efficiency, the RAN continues to consume more power than any other part of the network. This is due largely to new technology like mmWave transceivers and MIMO antennas, all of which require more power. Power Consumption of 4G and 5G Networks How can 5G



reduce power consumption Vs. 4G.

Does China Mobile have a 5G base station?

China Mobile has tried using lower cost deployments of MIMO antennas, specifically 32T32R and sometimes 8T8R rather than 64T64R, according to MTN. However, Li says 5G base stations are carrying five times the traffic as when equipped with only 4G, pushing up power consumption.



How much more electricity does a 5G base station consume

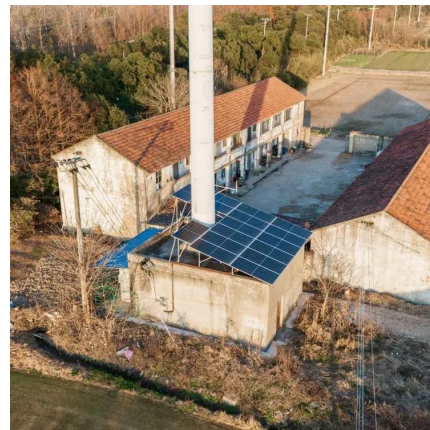


What is 5G Energy Consumption?

5G Base Station Power Consumption: With each base station carrying at least 5X more traffic and operating over more frequency bands, 5G base station power consumption is at least twice ...

5G and Energy Efficiency

automation, health, etc. The main idea behind 5G is to minimize total network energy consumption, despite increased traffic and service expansion due to its use for these verticals ...



5G base stations use a lot more energy than 4G base stations: MTN

A typical 5G base station consumes up to twice or more the power of a 4G base station, writes MTN Consulting Chief Analyst Matt Walker in a new report entitled " Operators ...

What is the Power Consumption of a 5G Base Station?

These 5G base stations consume about three times the power of the 4G stations. The main



reason for this spike in power consumption is the addition of massive MIMO and ...



Energy Consumption of 5G, Wireless Systems and ...

"A 5G base station is generally expected to consume roughly three times as much power as a 4G base station. And more 5G base stations are needed to cover ...



Why does 5g base station consume so much power and how to ...

In addition to other small modules that use electricity, the power consumption of a single 5G base station is generally around 3700 watts, which is about three times that of 4G ...



Why 5G cell towers go down when there is power outage? Does it consume

Say there's a power outage during extreme weather or maintenance events. Cell towers have batteries and backup generators that run on diesel, propane. However, they don't work well or ...



How much power does 5G consume?

One 5G base station is estimated to consume about as much power as 73 households (6), and 3x as much as the previous generation of base stations (5), (7). When base stations, data centers ...

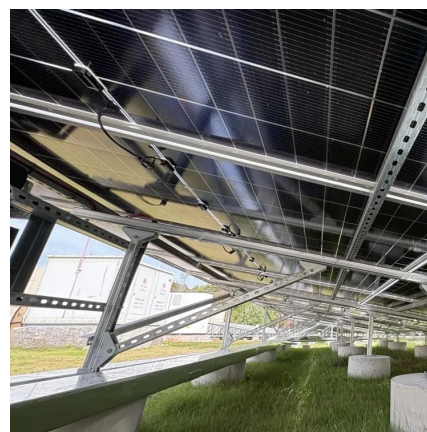


[5G energy consumption: The impact of 5G NR](#)

Figure 3: Example of the theoretical base station energy consumption (using base station power models from 3GPP) during idle mode signaling in LTE (top) and NR (bottom). ...

How much power does 5G consume?

By putting the base station into a sleep state when there is no traffic to serve i.e. switching off hardware components, it will consume less energy. The more components that ...



[Power Consumption of 4G and 5G Networks](#)

With many of the core network services moving to the cloud in 5G, we see a reduction in the energy consumption of core network elements from 4G to 5G and an increase ...



How much power does a 5G base station consume? It is rumored ...

The operation of 5G base stations is also difficult to achieve a stable level. Although the network speed has increased compared with 4G, the growth rate is very limited. Therefore, ...



Energy Consumption of 5G, Wireless Systems and the Digital ...

"A 5G base station is generally expected to consume roughly three times as much power as a 4G base station. And more 5G base stations are needed to cover the same area," -IEEE ...

A technical look at 5G energy consumption and performance

By putting the base station into a sleep state when there is no traffic to serve i.e. switching off hardware components, it will consume less energy. The more components that ...



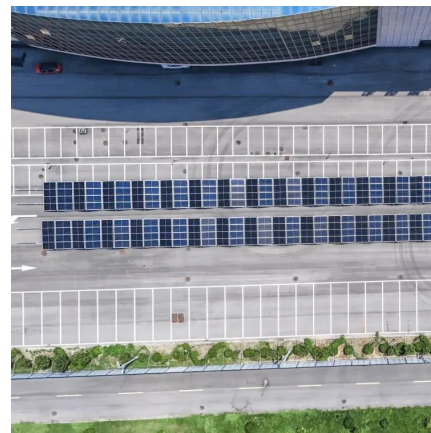


Why does 5g base station consume so much power ...

In addition to other small modules that use electricity, the power consumption of a single 5G base station is generally around 3700 watts, ...

The power supply design considerations for 5G base ...

An integrated architecture reduces power consumption, which MTN Consulting estimates currently is about 5% to 6 % of opex. This percentage ...



Improving energy performance in 5G networks and beyond

In 5G networks, digital processing in base stations can increase more than 300 times compared with early Long Term Evolution (LTE) products, primarily due to an increasing ...

Parsing the 5G power equation: Is 5G actually greener?

Yes, 5G as a system is designed to be more power efficient - but that doesn't mean it will use less power on an absolute basis. Let's look at the picture merely in terms of ...



5G Distributed Base Station Power Solution: Redefining Network

The Hidden Crisis in 5G Infrastructure Deployment Did you know that 5G base stations consume 3.5× more power than 4G counterparts? As operators deploy distributed architectures to meet ...



[Front Line Data Study about 5G Power Consumption](#)

The power consumption of a single 5G station is 2.5 to 3.5 times higher than that of a single 4G station. The main factor behind this increase in 5G power consumption is the high power ...



[Carbon emissions of 5G mobile networks in China](#)

Here we develop a large-scale data-driven framework to quantitatively assess the carbon emissions of 5G mobile networks in China, where over 60% of the global 5G base ...





5G Transmit Power and Antenna radiation

To keep the power density per MHz similar to LTE systems, the 100MHz 3.5GHz spectrum will require 5x 80 W, which is not easy to be achieved. 5G trials ...



5G base stations use a lot more energy than 4G base ...

A typical 5G base station consumes up to twice or more the power of a 4G base station, writes MTN Consulting Chief Analyst Matt Walker in a ...

5G Base Station Growth: How Many Are Active? , PatentPC

A typical 5G base station consumes three times more power than a 4G station. This is due to the need for higher frequencies, greater bandwidth, and more antennas to ensure connectivity.



How Much Power Does 5G Base Station Consume? , Huijue ...

Have you ever wondered how much energy our hyper-connected world is consuming? 5G base stations, the backbone of next-gen connectivity, now draw 3-4 times more power than their 4G ...



Contact Us

For catalog requests, pricing, or partnerships, please visit:
<https://bringmethehorizon.eu>