



**SolarMax Pro Energy Storage Systems**

# **How much capacity should I buy for an outdoor power supply**





## Overview

---

Quick Answer: For simple overnight camping with just phone charging and basic lights, 100-200 Wh is sufficient. For weekend trips with multiple devices per person, 500-800 Wh will be ideal for most families. How to choose a portable power station?

The next step is to consider the capacity of the portable power station. The capacity of the power station will determine how long it can run your devices. Capacity is measured in watt-hours (Wh) and indicates how much electricity the portable power station can store.

How to calculate portable power station wattage?

You can calculate this value by a simple method: Take the wattage each device you wish to power requires and multiply it by the number of hours they are used. After figuring out what size portable power station I need, you are probably asking yourself: Which one should I choose?

.

What wattage does a portable power station need?

For example, if you plan to power a device that requires 1,000 watts, you'll need a portable power station with an output wattage of at least 1,000 watts. Remember: some devices may have a higher startup or surge wattage, which is the extra wattage required when the device is first turned on. AC Output: This is the standard household outlet type.

What should you consider when buying a power station?

Aside from the capacity and output wattage, you'll also need to consider portability and other features of the power station. Some power stations are designed to be lightweight and portable, making them easy to carry around. Others may have additional features such as built-in AC outlets, USB ports, and even solar panels.



How much power does a small power station need?

A small power station, around 150Wh, will do just fine for powering just a few devices, like phones or tablets. But if you are trying to keep your mini-fridge, lights, or machine running, you'll need something more substantial, like a 500Wh or 1000Wh model. If it will be a few hours, you may get by on something with a small capacity.

What are the different types of portable power stations?

Regardless of the energy source, portable power stations come in various sizes. These sizes range from small models to support small electrical devices to heavy-duty models to keep your devices running for several hours. HOW DOES A PORTABLE POWER STATION WORK?

A portable power station stores electricity within a battery.



## How much capacity should I buy for an outdoor power supply

---



### [How to Choose an Outdoor Power Supply in 2025: From ...](#)

The power capacity of the outdoor power supply is a primary consideration. Here's how to determine which one suits your needs: 500W to 1000W Power: Ideal for small devices such as ...

### [How to calculate the required ups load capacity?](#)

That is to say, one only runs the uninterruptible power supply system around 80% of the capacity to support the load calculated. For example, if the total required capacity/load is ...



### **How Much Battery Backup Do I Need? A Complete Guide To Power**

...

To find the right battery backup, first, add the watt hours of your critical devices. Multiply this by the hours of power you need. Choose a UPS with at least 20% more output ...

### [How much electricity can an outdoor power supply store](#)

To identify the necessary capacity for an outdoor power supply, consider the aspect of devices you



plan to use. Begin by calculating the combined wattage of your devices, ...

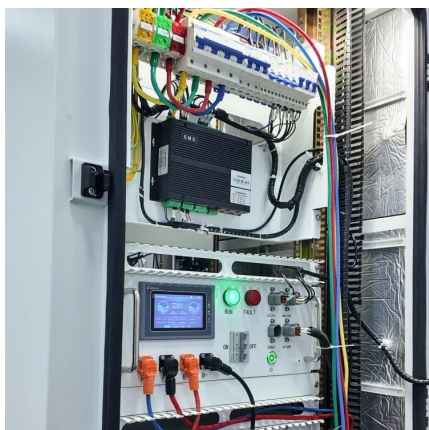


### [How to choose an outdoor power supply?](#)

Discover how to choose the right outdoor power supply with Topwell Power's guide. Explore their LiFePO4 battery 500W power supply with USB Type A, Type C, and car charger ...

### [How to choose an outdoor power supply?](#)

How to choose an outdoor power supply? The only purpose of this article is to save your time with the data I have compiled and to provide you with a comprehensive ...



### [What Size Portable Power Station Do I Need?](#)

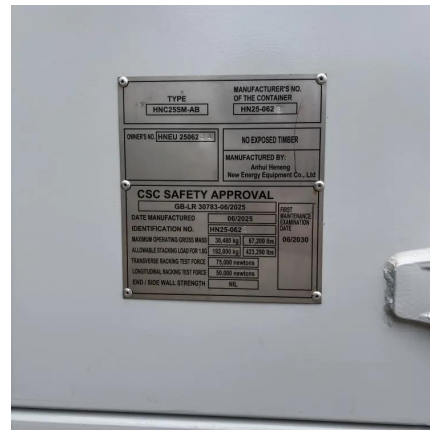
So it's important to determine your energy needs beforehand because it will tell you how much energy capacity your battery should be. To answer the questions: "what size ...





## How to choose a suitable outdoor emergency power supply?

When choosing an outdoor power supply with the correct capacity, you should consider the equipment that will be driven and its power requirements. If you need to power a ...

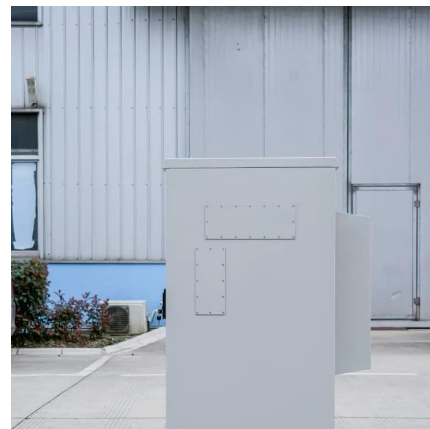


## [Selecting the Right Power Supply: A Comprehensive ...](#)

Learn how to choose the right power supply for your application, considering voltage, wattage, environment, and specific operational requirements.

## How much power does the outdoor energy storage power supply ...

Outdoor energy storage power supplies demonstrate significant versatility in their power capacities, with options ranging from 1kWh up to 100kWh or more, depending on ...



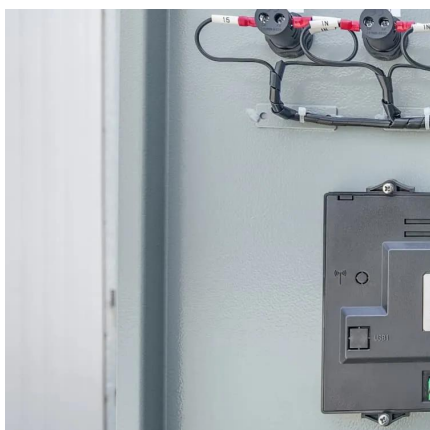
## [Best portable power station of 2025: My top-rated ...](#)

Best portable power station for RVs and home back-up A heavyweight beast of a power station, this unit boasts battery expansion, ...



## How to Select the Right Size Portable Power Station For Your ...

To select the correct portable power station for your needs, the capacity should be greater than the total wattage required. However, it's important to note that the capacity of the portable ...

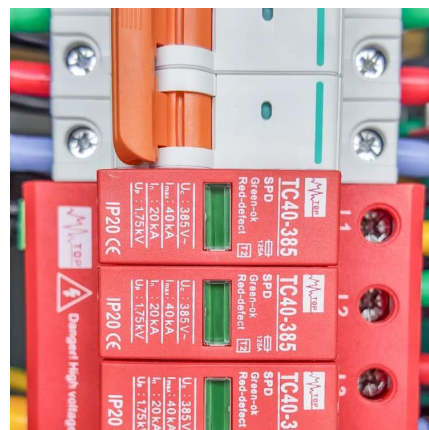


## [How to Choose the Best PC Power Supply](#)

How to Choose the Best PC Power Supply  
Whether you're upgrading your desktop PC or building one out from scratch, here's what you need to know about finding the right ...

## What Size of a Portable Power Station Do I Need for Camping?

Discover how to choose the perfect portable power station size for your camping needs. From basic overnight trips to weeklong off-grid adventures, find the ideal capacity and ...





## How to Select the Right Size Portable Power Station For Your ...

To select the correct portable power station for your needs, the capacity should be greater than the total wattage required. However, it's important to note that the capacity of the ...

### What Size Portable Power Station Do I Need

To calculate how much battery capacity you need, you must first calculate the energy consumption of the devices you plan to use. To do this, multiply the wattage of each ...



### How to choose solar outdoor power supply , NenPower

The next consideration involves the battery capacity of the solar outdoor power supply. The capacity indicates how much energy the battery can store, expressed in amp ...

## Contact Us

---

For catalog requests, pricing, or partnerships, please visit:  
<https://bringmethehorizon.eu>