



**SolarMax Pro Energy Storage Systems**

# **How many watts of solar panels can be used with a 45ah lead- acid battery**





## Overview

---

Note: If you already have a solar panel and want to know how long it will take to charge your battery, use our solar battery charge time calculator.

1. Enter battery Capacity in amp-hours (Ah): For a 100ah battery, enter 100. If the battery capacity is mentioned in watt-hours (Wh), divide Wh by the battery's voltage (v). 2. Enter battery.

Here's a chart about what size solar panel you need to charge different capacity 12v lead-acid and Lithium (LiFePO4) batteries in 6 peak sun hours using an MPPT charge controller.

Follow these 6 steps to calculate the estimated required solar panel size to recharge your battery in desired time frame.

Here's a chart about what size solar panel you need to charge different capacity 24v lead-acid & Lithium (LiFePO4) batteries in 6 peak sun hours using an MPPT charge controller.

You need around 200-300 watts of solar panels to charge most of the 12V lead-acid batteries from 50% depth of discharge in 6 peak sun hours with an MPPT charge controller. How many watts a solar panel to charge a 24v battery?

You need around 600-900 watts of solar panels to charge most of the 24V lithium (LiFePO4) batteries from 100% depth of discharge in 6 peak sun hours with an MPPT charge controller. Full article: [What Size Solar Panel To Charge 24v Battery?](#)

[What Size Solar Panel To Charge 48V Battery?](#)

.

[How many watts a solar panel to charge a lithium battery?](#)

You need around 1600-2000 watts of solar panels to charge most of the 48V lithium batteries from 100% depth of discharge in 6 peak sun hours with an MPPT charge controller. [What Size Solar Panel To Charge 120Ah Battery?](#)



.

How many solar panels do I need to charge a 50Ah battery?

You need around 180 watts of solar panels to charge a 12V 50ah Lithium (LiFePO4) battery from 100% depth of discharge in 4 peak sun hours with an MPPT charge controller. Related Post: [How Long Will A 50Ah Battery Last?](#)

.

How many batteries can a 400 watt solar panel charge?

As we can see, a 400-watt solar panel will need 2.7 peak sun hours to charge a 100Ah 12V lithium battery. If we presume that we get 5 peak sun hours per day, we can actually fully charge almost two 100Ah batteries (or one 200Ah battery).

How many watts a solar panel to charge 130ah battery?

You need around 380 watts of solar panels to charge a 12V 130ah Lithium (LiFePO4) battery from 100% depth in 5 peak sun hours with an MPPT charge controller. [What Size Solar Panel To Charge 140Ah Battery?](#)

.

How many watts do I need to charge a 12V 20Ah battery?

You need around 40 watts of solar panels to charge a 12V 20ah lead-acid battery from 50% depth of discharge in 4 peak sun hours with an MPPT charge controller. You need around 70 watts of solar panels to charge a 12V 20ah Lithium (LiFePO4) battery from 100% depth of discharge in 4 peak sun hours with an MPPT charge controller.



## How many watts of solar panels can be used with a 45ah lead-acid battery

---

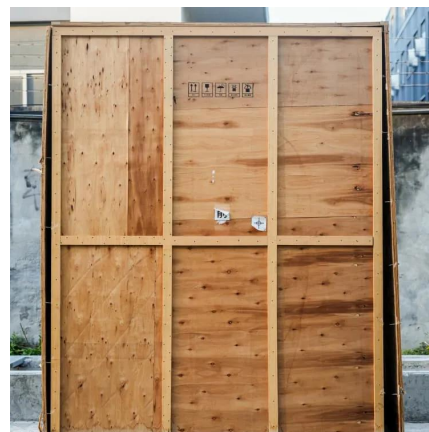


### [Battery Series and Parallel Connection Calculator](#)

Series-parallel mixes offer both more power and capacity, which is great for many systems. Understanding how to wire batteries is key for efficient and reliable power setups in ...

### **Difference Between Amp Hours and Watt Hours for a Battery**

Learn to calculate the difference between amp hours and watt hours to understand how much energy your battery can store for portable power solutions.



### [What Size Solar Panel To Charge 100Ah Battery?](#)

You just input how many volt battery you have (12V, 24V, 48V) and type of battery (lithium, deep cycle, lead-acid), and how quickly you want the battery to be ...

### [How Do You Calculate Solar Panel to Battery](#)

To calculate your daily energy needs, you'll want to add the wattage of all the devices you plan to





power with your solar system. For example, you're running a 100-watt ...



## What Size Solar Panel To Charge 100Ah Battery? (Calculator

You just input how many volt battery you have (12V, 24V, 48V) and type of battery (lithium, deep cycle, lead-acid), and how quickly you want the battery to be charged, and the calculator will ...

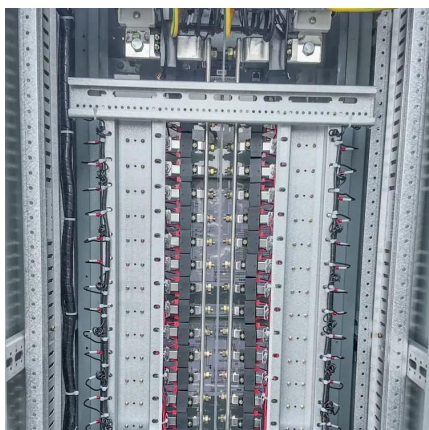
## [What Solar Panel Size to Charge a 35ah Battery?](#)

A 35ah battery is a good alternative if you only run small appliances and devices. It is light, affordable and still powerful. And compared to larger batteries, you only need smaller solar ...



## [Solar Battery Calculator: How to Size Your Solar ...](#)

To determine the number of solar panels you need, assess your home's average energy use in kilowatt-hours. The amount of sunlight in your ...





## How Many Solar Panels to Charge 4 Batteries?

Four 12V 100ah batteries at 50% DOD is 2400 watts. With 4 x 300 watt solar panels the charge time will be 2 to 3 hours. A single 300 watt solar panel can recharge four 100ah batteries at ...



## **How to Calculate Solar Panels Needed to Charge Batteries: A ...**

For example, a 300-watt solar panel can produce about 1.5 kWh per day, assuming 5 hours of peak sunlight. Batteries store excess energy generated by solar panels ...

## **Solar Panel Size Calculator**

Use our solar panel size calculator to find out the ideal solar panel size to charge your lead acid or lithium battery of any capacity and voltage. For example, 50ah, 100ah, ...



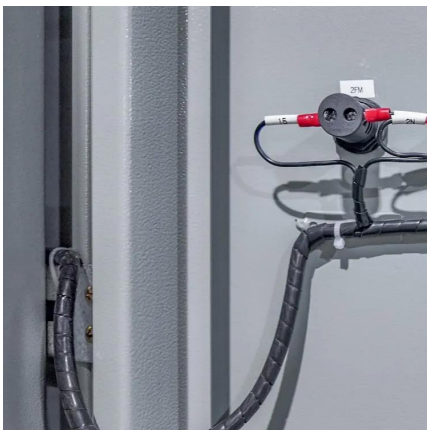
## Solar Panel Size Calculator: What Size Panel Do I Need?

You need around 150-300 watts of solar panels to charge many common 12V lead acid battery sizes from 50% depth of discharge in 5 peak sun hours with an MPPT charge ...



### [Solar Panel and Battery Sizing Calculator](#)

Specify the solar panel wattage you plan to use. The result will estimate how many panels you need to meet your energy goals. Enter the battery storage capacity, allowing the ...



### **How many watts is suitable for a 45v solar battery , NenPower**

To accurately assess how many watts are suitable for a 45V solar battery, one must engage in a thorough calculation reflecting specific energy needs. This begins with identifying ...

### [How Many Solar Panels Can a Charge Controller Handle?](#)

Knowing how many solar panels you can use with a charge controller is critical. If the controller is overloaded there is a good chance it gets damaged permanently. If you are planning to buy a ...



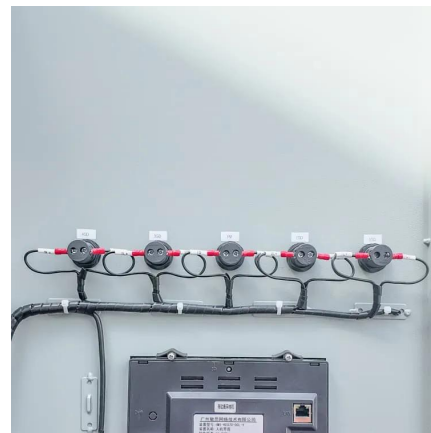


### [How to Calculate Battery Capacity for Solar System](#)

Choosing the right battery capacity for your solar setup isn't guesswork--it's about knowing your solar energy needs. If you go too small, ...

### [Solar Charge Controller Sizing and How to Choose One](#)

Solar charge controllers are important components of a solar power system to ensure everything runs efficiently and safely of your solar panel system, learn everything about it here.



### [How to Calculate Battery Capacity for Solar System](#)

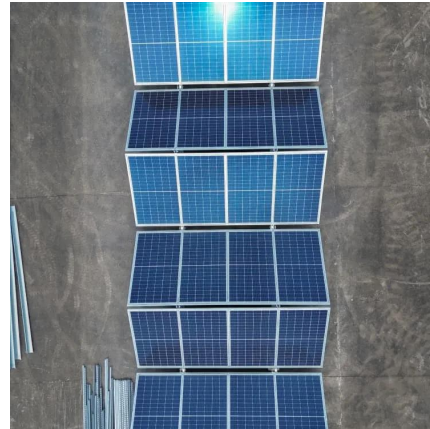
Choosing the right battery capacity for your solar setup isn't guesswork--it's about knowing your solar energy needs. If you go too small, you'll run out of power fast. Too big, and ...



### [Calculator , Determine Run Time for Specific Load](#)

This calculator is intended to help you figure out how long your lead-acid (Wet, AGM, Gel) battery will last under a specified load. In order to ...





### **Solar Battery Calculator: How to Size Your Solar Panels, ...**

To determine the number of solar panels you need, assess your home's average energy use in kilowatt-hours. The amount of sunlight in your area also affects the power your ...



### **Solar Panel Charge Time Calculator For 12V Batteries (100W-500W Panels)**

Here you have it: A single 300W solar panel will fully charge a 12V 50Ah battery in 10 hours and 40 minutes. You can use this 3-step method to calculate the charging time for any battery. ...



### [Solar Panel Size Calculator: What Size Panel Do I...](#)

You need around 150-300 watts of solar panels to charge many common 12V lead acid battery sizes from 50% depth of discharge in 5 peak ...





## [Calculate Battery Size For Any Size Inverter \(Using ...](#)

Pairing a right size capacity battery for an inverter can be a bit confusing for most the beginners So I have made it easy for you, use the ...



## [What Size Solar Panel To Charge 24v Battery? \(incl.](#)

Summary You need around 500-700 watts of solar panels to charge most of the 24V lead-acid batteries from 50% depth of discharge in 5 peak sun ...

## Contact Us

---

For catalog requests, pricing, or partnerships, please visit:  
<https://bringmethehorizon.eu>