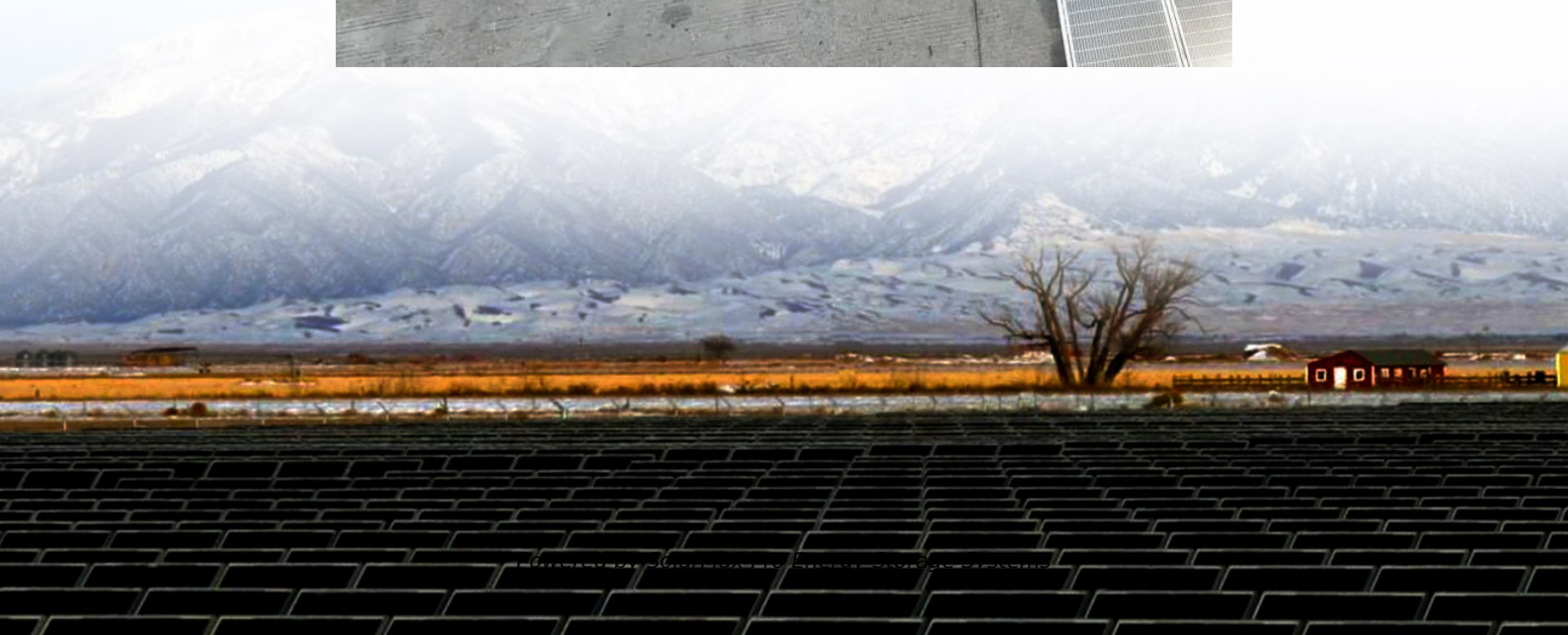
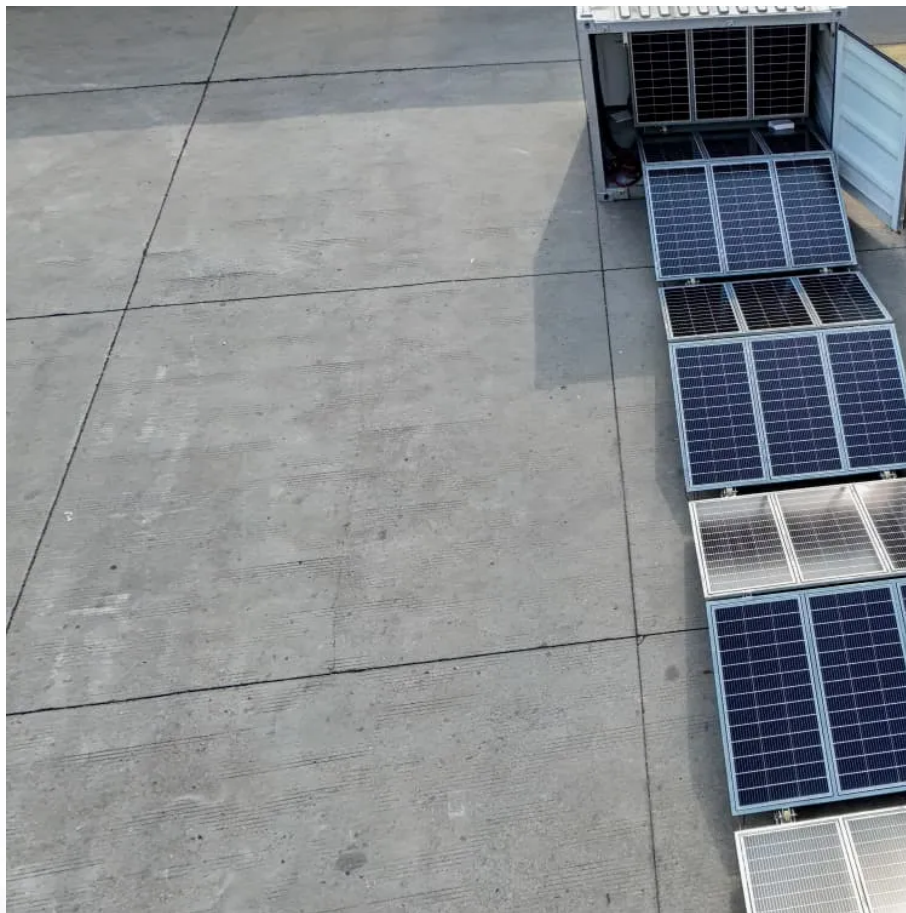




SolarMax Pro Energy Storage Systems

How many watts does solar energy 30a have





Overview

A 30 amp charge controller has a power capacity of 360 watts for a 12V panel, 720 watts for 48V, and 1440 for a 48V solar panel. Calculation of wattages handled by a 30 amp charge controller will go by a simple formula $\text{amps} \times \text{volts} = \text{watts}$ How many solar panels do I need for a 30 amp controller?

This will also affect the number of panels you need. Calculating the number of solar panels you need for a 30 amp controller involves a few steps. This is calculated by multiplying the voltage of your system by the amperage of your controller. For example, if you have a 12V system, your controller can handle $12V \times 30A = 360 \text{ watts}$.

Can I use a 300 watt solar panel with a 100/30?

I am deciding between ordering 2 - 300 watt panels or using 2 - 250 watt panels available locally. The 100 watt differential won't be an issue as my solar needs are very small. I have a Smart Solar 100/30 and I've had people tell me I can use it with these panels. Is that possible?

Yes, you can use either of those panels with the 100/30.

How many watts can a solar panel produce?

For example: A 100-watt panel can produce 100 watts per hour in direct sunlight. A 400-watt panel can generate 400 watts per hour under the same conditions. This doesn't mean they'll produce that amount all day, output varies with weather, shade, and panel orientation.

How many watts can a 100/30 charge?

Yes, you can use either of those panels with the 100/30 You can use both panel types but the 100/30 can give you max. 30A charging current. So you already have enough power with the 250Wp panels. Is there a limit as to how many watts the 100/30 can accept?

I understand it won't output more than 30A. But lets say I hook up



800-1000W of panels.

How do you calculate wattage for a solar panel?

Common system voltages are 12V, 24V, or 48V. The total wattage that your controller can handle is calculated by multiplying the system voltage by the controller's amperage. The amount of sunlight your panels will receive is significant.

How many watts can a solar controller handle?

This is calculated by multiplying the voltage of your system by the amperage of your controller. For example, if you have a 12V system, your controller can handle $12V * 30A = 360$ watts. Solar panels come in different wattages, typically ranging from 100 watts to 400 watts. You'll need to know the wattage of the panels you plan to use.



How many watts does solar energy 30a have



Lithium (LiFePO4) Battery Charge Time Calculator & Formula

Enter the solar panel size in watts. If you have multiple solar panels connected together, add up their rated wattage and enter the number (2 x 100W = 200W). Select the ...

MPPT charge controller calculator: Find the right solar ...

MPPT Size Calculator The MPPT calculator has 6 input fields that will describe your solar energy system: 1- Solar panel wattage: This is the ...



[How Much Solar Power Do I Need For My RV?](#)

It involves estimating your daily power consumption while RVing, adding up the total, and using the sum to determine how many solar panels you need.

[Maximum Watts With Smart Solar 100/30](#)

We see a max of about 360W production, but usually more than 250-275W in best conditions.



If we also hook up another 2x100W of portable panels, we can see about 100 ...



Solar Power For Campers: How Many Watts Needed? , ShunAuto

Solar panels are rated for their max efficiency--that is, a 100-watt solar panel will produce 100 watts in perfect conditions. (And unless you're the luckiest camper in the world or ...

[FREE RV Solar Calculator 2025 , RV Travel Life](#)

Welcome to our RV solar calculator, a free tool designed to help you estimate the size of the solar panels you will need to replenish your RV battery bank. This will ensure that ...



Solar Panel Wattage Explained: How Many Watts Do You Need?

Confused about solar panel wattage? Learn how many watts you need, how solar output works, and how to calculate the right solar setup for your home, RV, or cabin.



[How Much Solar Power Do I Need For My RV? \(Our ...](#)

The best rule of thumb is about 100 watts per 30 amp-hours each day, but there's more to it than just putting enough panels up. Read on to learn just how much ...



Renogy Adventurer Li

The Renogy Adventurer-Li is a 30A PWM solar power charge controller that is designed to be used with 12V or 24V photovoltaic systems. This advanced negative-ground controller is ...



[What Size Solar Generator Do I Need for a 30 Amp RV?](#)

In an ideal scenario, a 30 amp RV uses around 3,600 watts when connected to a power source of 120 volts. However, this power utilization may ...



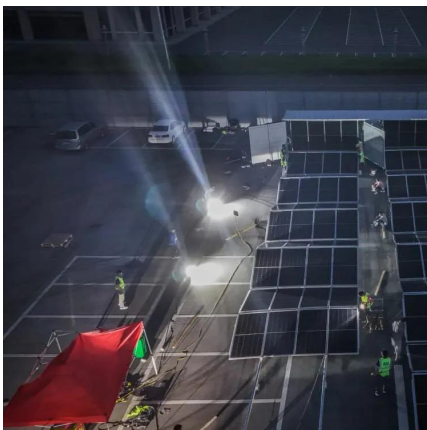
[Powering Your 30 Amp RV: Finding the Perfect Solar ...](#)

To make things clear, a single formula connect these three aspects together: $\text{Watts} = \text{Volts} \times \text{Amps}$. So a 30 Amps RV's maximum watts ...



30 Amp, 12-Volt Solar Charge Controller

The Sunforce 30-Amp Solar Charge Controller handles up to 450 Watts of power from a 12-volt solar panel. This controller prevents any overcharge of a 12-volt ...



How Many Solar Panels to Charge a 100ah Battery?

This does bring up the question: if you recharge the battery at 50%, do you still need 240W or 300W solar panels? Technically, you can use a 200 watt solar panel to charge a 100ah battery ...

How many Watts can a 30-amp Charge Controller Handle?

How many Watts can a 30-amp Charge Controller Handle? A 30 amp charge controller has a power capacity of 360 watts for a 12V panel, 720 watts for 48V, and 1440 for a ...





Powering Your 30 Amp RV: Finding the Perfect Solar Generator

To make things clear, a single formula connect these three aspects together: $\text{Watts} = \text{Volts} \times \text{Amps}$. So a 30 Amps RV's maximum watts should be $3600\text{W} = 120\text{V} \times 30\text{A}$

[How many solar panels do i need for 30 amps?](#)

To generate 30 amps, you would need at least two 300-watt solar panels. However, this assumes ideal conditions, and you may need more panels if your conditions are ...

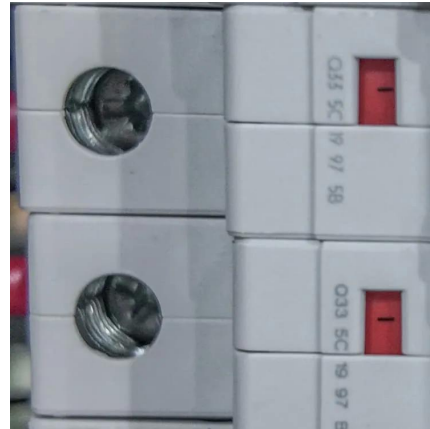


Solar Panel Wattage Calculator

This solar panel wattage calculator allows you to calculate the recommended solar panel wattage according to the energy consumption of your household appliances.

[What Size Solar Generator Do I Need for a 30 Amp RV?](#)

In an ideal scenario, a 30 amp RV uses around 3,600 watts when connected to a power source of 120 volts. However, this power utilization may vary according to different ...



[How Many Solar Panels Do I Need For A 30 Amp ...](#)

Common residential solar panels range from 150 to 370 watts. The voltage of your solar system is another crucial factor. Common system voltages are 12V, ...



[How much panel power can an Epever 30 amp](#)

When doing math, remember, max watts comes as max voltage peaks. So a 12V charge limit of 30A means, 14.8V max voltage, times 30 amps, or 444W max output. But the ...



How Many Solar Panels Do I Need For A 30 Amp Controller?

Common residential solar panels range from 150 to 370 watts. The voltage of your solar system is another crucial factor. Common system voltages are 12V, 24V, or 48V. The total wattage that ...





Contact Us

For catalog requests, pricing, or partnerships, please visit:
<https://bringmethehorizon.eu>