



**SolarMax Pro Energy Storage Systems**

## **How many watts can a 12v inverter generate**





## Overview

---

Before we go any further, we highly recommend that you choose a pure sine wave inverter. This type of inverter delivers high-quality electricity, similar to your utility company. This way, none of your appliances run the risk of being damaged. Now, when it comes to sizing your inverter, you always need to check.

We have summarized the appliances that inverters from 300W to 3000W can run depending on their rated maximum power. Note to our readers: Use the above formula to determine.

Typically, a 12-volt car battery can support an inverter with a power range of about 150 watts to 1500 watts. Please note, however, that car batteries are not suitable for driving high power inverters for extended periods of time, which may cause damage to the battery. How much power does an inverter need?

The continuous power requirement is actually 2250 but when sizing an inverter, you have to plan for the start up so the inverter can handle it. Third, you need to decide how long you want to run 2250 watts. Let's say you would like to power these items for an eight-hour period.

How many watts can a 5000-watt inverter power?

A 5000-watt inverter can produce 5000 watts of power per hour to run appliances. It is sufficient to power several high-end household appliances at the same time, but you may not be able to use all of them at once. Instead, connect one appliance at a time while using multiple devices simultaneously.

How many watts can a 12 volt 20 amp inverter output?

A 12 volt 20 amp outlet can output up to 240 watts of power. That means a larger 200 watt inverter is going to be compatible. The Bestek 200 watt inverter is cool because it has 4 USB ports and 3 AC outlets. You can use the wall outlets for charging laptops and small gaming systems and still have USB ports to charge your phone.

How to choose a power inverter?



Second, select an inverter. For this example, you will need a power inverter capable of handling 4500 watts. The continuous power requirement is actually 2250 but when sizing an inverter, you have to plan for the start up so the inverter can handle it. Third, you need to decide how long you want to run 2250 watts.

How many watts can a 15 amp inverter output?

A 15 amp 12v outlet can output up to 180 watts of power. That means the Energizer 150 watt power inverter will work perfectly. This powerful little car inverter is a pure sine wave inverter. This type of inverter can be hard to find in anything smaller than 300 watts, so it's really cool that Energizer makes one.

How long can a 5000 watt inverter run?

A 5000 watts, 48V inverter can run for 6 hours when the power load factor is 0.8 and the volt-ampere is 130 amperes. The battery must provide a minimum of 130 amperes in this case. A 5000W inverter could generate sufficient energy to power more than 5 household types of equipment without an additional power supply.



## How many watts can a 12v inverter generate

---

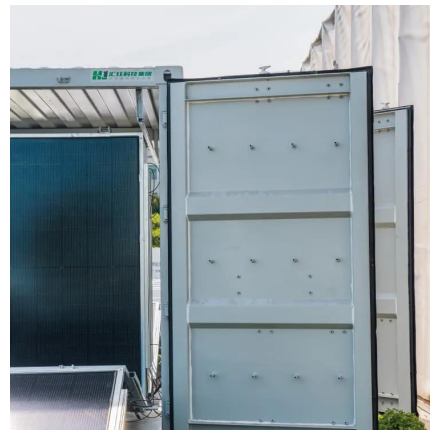


### Inverter Calculator

In order to ensure that the capacity of your power inverter is sufficient to meet the required start up load, you must first determine the power consumption of the ...

### What Inverter Works With My Car Cigarette Lighter/12V Outlet

As you can see the largest inverter for a 12 volt outlet in a normal vehicle is 240 watts. Anything larger will risk blowing the fuse or even damaging the wiring. So which inverter ...



### [How Many Solar Panels Do I Need For a 1000 Watt ...](#)

A 1000-watt inverter typically requires multiple solar panels, the required quantity will vary based on the wattage of your solar panels and must ...

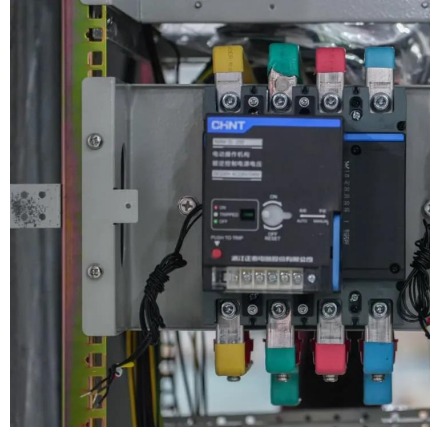
### [What Inverter Works With My Car Cigarette ...](#)

As you can see the largest inverter for a 12 volt outlet in a normal vehicle is 240 watts. Anything





larger will risk blowing the fuse or even ...



### [What will a 5000W Inverter Run? Heavy Load](#)

Use the below formula to calculate the battery usage in the amps. Number of hours x watts = total watts / volts = battery amps. The 5000 watts inverters would require a ...

### [Battery Runtime Calculator , How Long Can A Battery ...](#)

Use Battery Runtime Calculator to Calculate runtime of your battery. Learn how long can a battery last. Good for solar and car battery ...



### **How Many Watt Solar Panel to Charge 12 Volt Battery: Calculate ...**

They contain photovoltaic cells that generate direct current (DC) when exposed to light. Understanding how these panels work can help you determine how many watts you need ...



## Inverter Calculator

In order to ensure that the capacity of your power inverter is sufficient to meet the required start up load, you must first determine the power consumption of the equipment or appliance you plan ...



### How many amps can an inverter put out?

Could someone smarter than me explain this? I have a Magnum Energy Inverter/Charger Model MS2000. Its spec sheet says that the "Output power continuous watts" ...



### How many watts does 12v solar power generate?

To determine the amount of wattage a 12V solar power system can produce, various factors come into play, including the panel size, sunlight ...



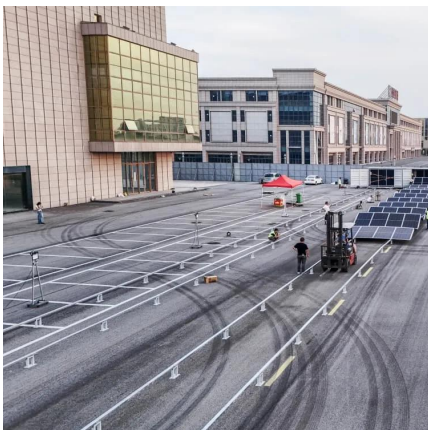
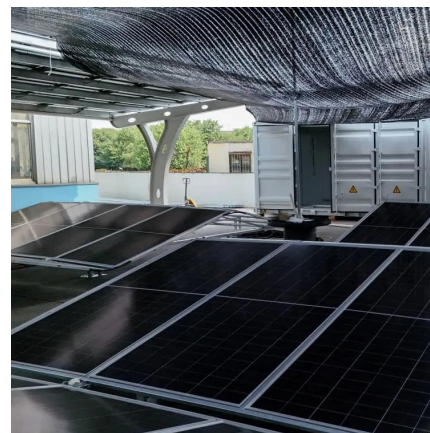
### **How to size an inverter that can run your air conditioner?**

For example, the equivalent of 3000VA is 2400 Watts. In any case, the Continuous Power rating of the inverter you choose should be higher than ...



### How Many Watts Can a 12V 100Ah Battery Produce?

A 12V 100Ah battery can produce up to 1200 watts of power under ideal conditions. This is calculated by multiplying the voltage (12 volts) by the capacity (100 amp-hours). ...



### Solar Panel Amps Calculator (Watts to Amps) - Dot ...

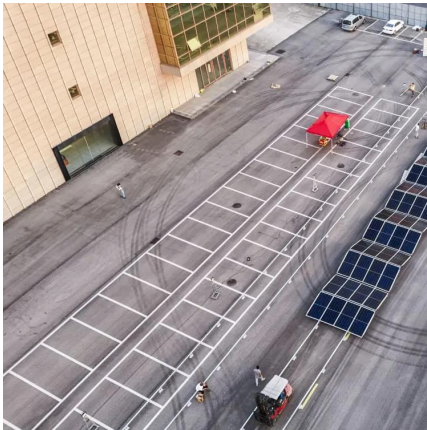
Solar panel output: Enter the total capacity of your solar panel (Watts). Vmp: Is the operating voltage of the solar panel which you can check ...

### **What Size Inverter Do I Need?**

Learning how to calculate inverter size for your needs can be a tricky task, especially if you're unfamiliar with how an inverter works or how much power ...







### [How Big of an Inverter Can My Car Battery Handle?](#)

Typically, a 12-volt car battery can support an inverter with a power range of about 150 watts to 1500 watts. Please note, however, that car batteries are not suitable for driving ...

### [What will a 5000W Inverter Run? Heavy Load](#)

Use the below formula to calculate the battery usage in the amps. Number of hours x watts = total watts / volts = battery amps. The 5000 watts ...



### [How Many 12V Batteries for 3000W Inverter](#)

A 3000W inverter can deliver up to 3000 watts of power to your appliances, but it's important to note that inverters aren't 100% efficient. In fact, most operate at around 90% ...

### [What Inverter Works With My Car Cigarette ...](#)

Last update on 2025-08-19 / Affiliate links / Images from Amazon Product Advertising API  
Best Inverters For The 3 Different 12V Outlets in Cars ...





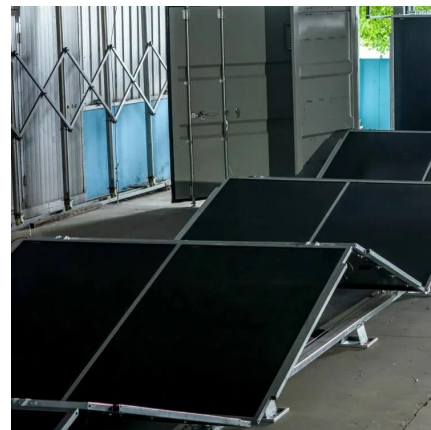
## Inverter Amp Draw Calculator

It determines how many devices you can power and how long your inverter can function. In this article, let's explore the inverter amp draw calculator for 1000W, 1200W, and ...



## [Power Inverters Guide :: CompactAppliance](#)

A power inverter converts 12 volt DC power to standard household 110-120 volt AC power, which allows you to run AC electrical equipment off your car or marine battery for ...



## How many watts does 12v solar power generate? , NenPower

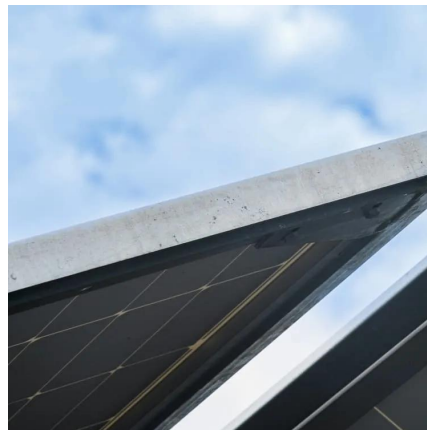
To determine the amount of wattage a 12V solar power system can produce, various factors come into play, including the panel size, sunlight exposure, and efficiency ratio.





## [What Inverter Size Do I Need to Run an Air Compressor?](#)

An air compressor is a versatile device that can be used to inflate tires and supply air pressure for various building projects and tools in workshops and garages. Usually they run on electricity or ...



## [Usage Chart: How Many Watts Do You Need?](#)

Use the total wattage, plus 20%, as your minimum power requirement. Note: The wattage's given below are estimates. The actual wattage required for your appliances may differ from those ...

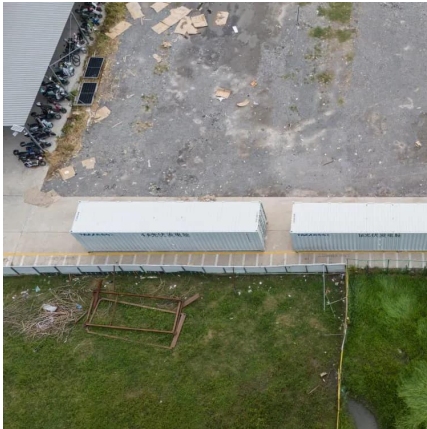
## **Inverter Size Calculator**

Learn how to calculate the required size of an inverter with our in-depth guide. We provide a handy formula, examples, and answers to common questions to help you make the right ...



## [Top 10 Best 12 Volt Power Inverter 2023 - Tips and ...](#)

Our Picks of 10 Best 12 Volt Power Inverters: 1. Wagan Black EL3748 12 volt Inverter with Remote Control An essential feature of an ...



## How Big of an Inverter Can My Car Battery Handle?

Typically, a 12-volt car battery can support an inverter with a power range of about 150 watts to 1500 watts. Please note, however, that car ...



## **Understanding Battery Capacity and Inverter Compatibility**

How Long Can a 100 Ah Battery Run a 1000W Inverter? To estimate how long a battery can run an inverter, we need to consider the power draw and the battery's capacity. ...



## **What Size Inverter Do I Need?**

Learning how to calculate inverter size for your needs can be a tricky task, especially if you're unfamiliar with how an inverter works or how much power you need to produce.



## Contact Us

---

For catalog requests, pricing, or partnerships, please visit:  
<https://bringmethehorizon.eu>