



**SolarMax Pro Energy Storage Systems**

## **How many volts is on the inverter**





## Overview

---

What voltage does an inverter use?

In different countries, the applicable AC voltage is different, and most countries use 110v, 120v output inverter voltage. You can confirm on the search engine or see how much AC voltage the home appliance label uses. How can the quality of inverter output voltage be measured?

.

What is a start inverter voltage?

The start inverter voltage is the minimum input voltage required for the inverter to initiate the conversion process. In the case of a 12V inverter, the start inverter voltage is typically around 9.5VDC. This threshold ensures that the inverter can begin its operation reliably without placing undue stress on the connected battery.

What is the start voltage of a 12V inverter?

In the case of a 12V inverter, the start inverter voltage is typically around 9.5VDC. This threshold ensures that the inverter can begin its operation reliably without placing undue stress on the connected battery. What is cut off voltage in inverter?

.

Why is inverter voltage important?

In the realm of power electronics, the inverter voltage is a critical parameter that dictates its performance, compatibility, and safety. Understanding the intricacies of inverter voltage is essential for anyone seeking a reliable and efficient power supply.

What is the cut off voltage on a 12V inverter?



For a 12V inverter, the cut-off inverter voltage is often set around 9.5VDC. Dropping below this threshold triggers a shut-off mechanism to preserve the battery's health and longevity. How do you check the voltage on an inverter?

.

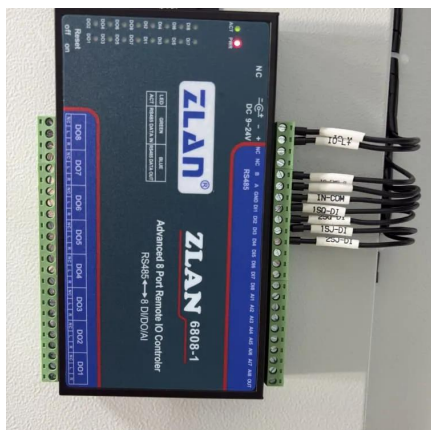
What is an example of a power inverter?

Common examples are refrigerators, air-conditioning units, and pumps. AC output voltage This value indicates to which utility voltages the inverter can connect. For inverters designed for residential use, the output voltage is 120 V or 240 V at 60 Hz for North America. It is 230 V at 50 Hz for many other countries.



## How many volts is on the inverter

---



### [Understanding Solar Panel Voltage for Better Output](#)

Find out how solar panel voltage affects efficiency and power output in our comprehensive guide. Get expert insights and tips for optimal solar power performance.

### [What Size Inverter Do I Need To Run A Tv?](#)

Short Introduction To Solar Inverters Batteries store power in DC (Direct current) and the voltage of a DC will be 12, 24, or 48 volts. but our ...



### [Inverters 101: Understanding amps and volts](#)

Inverters are really cool conversion devices that play with this voltage/ampereage relationship to trade volts for ampereage and vice versa. Say ...

### **What Size Inverter Do I Need?**

This can be useful to find the right battery size for your inverter (which you can calculate using our handy guide) or for measuring the necessary



volts. You ...



## What Size Inverter Do I Need?

This can be useful to find the right battery size for your inverter (which you can calculate using our handy guide) or for measuring the necessary volts. You can use the following formula to ...



## Inverters 101: Understanding amps and volts

Inverters are really cool conversion devices that play with this voltage/amperage relationship to trade volts for amperage and vice versa. Say you want to store a bunch of ...



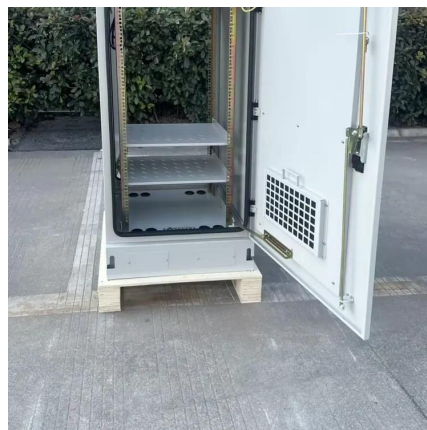
## Inverter Specifications and Data Sheet

It is 230 V at 50 Hz for many other countries. Peak Efficiency. The peak efficiency is the highest efficiency that the inverter can achieve. Most grid-tie inverters ...



## Inverter Specifications and Data Sheet

It is 230 V at 50 Hz for many other countries. Peak Efficiency. The peak efficiency is the highest efficiency that the inverter can achieve. Most grid-tie inverters have peak efficiencies above ...

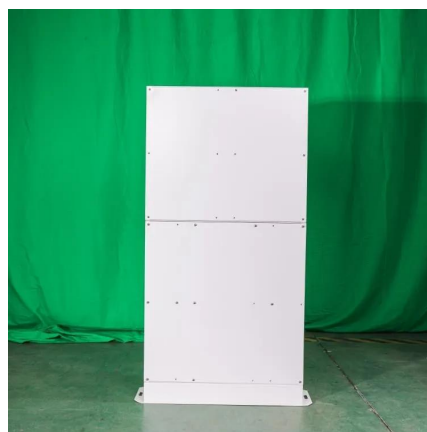


## A comprehensive guide to inverter voltage

The inverter start voltage is the minimum input voltage required for the inverter to start the conversion process. The startup voltage can vary depending on the design and model ...

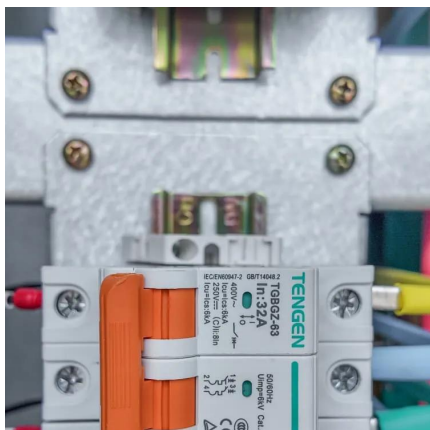
## **Understanding inverter voltage**

The start inverter voltage is the minimum input voltage required for the inverter to initiate the conversion process. In the case of a 12V inverter, the start inverter voltage is ...



## **Inverter Battery Voltage: How Many Volts Are Needed For ...**

An inverter battery typically operates at 12V, 24V, or 48V. These voltages represent the nominal direct current (DC) needed for the inverter's function.



## How Big Of an Inverter Can My Car Handle , Expert ...

The inverter is the device that converts power from battery-powered electronics to the voltage used by your car (120 volts). The greater wattage an inverter can ...

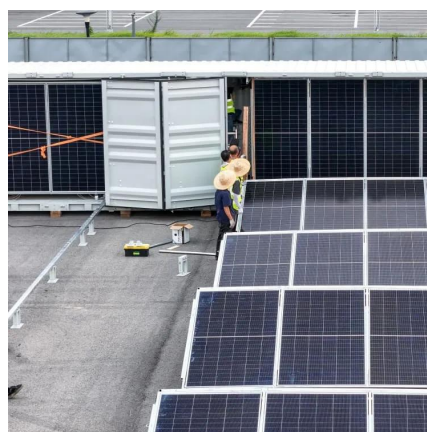


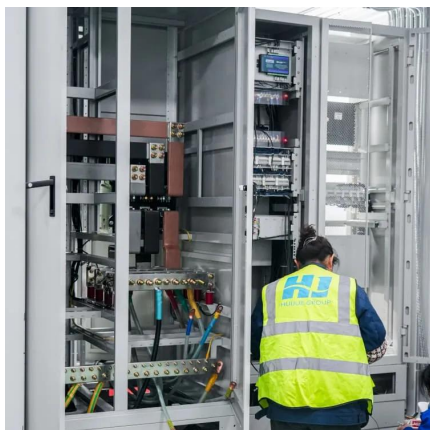
## A comprehensive guide to inverter voltage

The inverter start voltage is the minimum input voltage required for the inverter to start the conversion process. The startup voltage can vary ...

## **Inverter Voltage??**

"How many volts does your inverter put out?"  
We're leaving for a 2000 mile trip next week and I got a new GPS trip maker or whatever they call it. You have to use it with your ...





### [Inverter AC to DC Amperage Conversion Calculator](#)

DC to AC conversion involves using a device called an inverter to convert DC voltage to AC voltage. Inverters consist of switches, transistors, ...

### [How many volts does the energy storage inverter have?](#)

Most residential energy storage inverters function within a common voltage range of 12V to 60V. This voltage range is ideal for smaller setups, such as home battery systems ...



### [How Many Volts Is a 1000 Watt Inverter? - leaptrend](#)

However, in most typical household inverters, the working voltage is usually either 12 volts (V) or 24 volts (V). A 12-volt inverter is more ...

## **Inverter Power Calculator & Formula Online Calculator Ultra**

Inverters are essential for converting DC (direct current) to AC (alternating current), enabling the use of household appliances, tools, and electronics with batteries or solar power ...



## [Inverter and Types of Inverters with their Applications](#)

Related Post: Difference between Inverter & UPS - Uninterruptible Power Supply Different Types of Inverters Inverters are classified into many different ...



## **Inverter Amp Draw Calculator**

To calculate the amp draw for inverters at different voltages, you can use this formula.  
Maximum Amp Draw (in Amps) = ( Watts ÷ Inverter's Efficiency (%) ) ÷ Lowest Battery ...



## [How to Read an Inverter's Digital Display](#) [. Power Home](#)

The pure sine wave inverter 's digital display will usually show the following: Vac [V]: This number represents the AC voltage on the main wires. ...





## How Many Volts Is a 1000 Watt Inverter? - leaptrend

However, in most typical household inverters, the working voltage is usually either 12 volts (V) or 24 volts (V). A 12-volt inverter is more commonly found. It is often used for small ...



## How Many Volt of Inverter Battery (With Features)

An inverter battery voltage chart can be a useful tool when troubleshooting an inverter or UPS system. The chart lists the minimum and maximum DC voltages that are ...



## How Many Volt of Inverter Battery (With Features)

Most residential energy storage inverters function within a common voltage range of 12V to 60V. This voltage range is ideal for smaller setups, ...



## **48V Inverter: The Ultimate Guide to Efficient and Scalable Power**

48V Inverter vs 24 Volt DC Inverter: What's the Difference? When it comes to choosing an inverter for your solar, backup, or off-grid power system, one of the first decisions ...



## Contact Us

---

For catalog requests, pricing, or partnerships, please visit:  
<https://bringmethehorizon.eu>