



SolarMax Pro Energy Storage Systems

How many volts can the inverter output





Overview

What is the output voltage of an inverter?

It describes the output voltage of an inverter, which converts direct current (DC) from sources like batteries or solar panels into alternating current (AC). The output voltage of an inverter is determined by the DC input voltage and the modulation index.

How much power does an inverter need?

It's important to note what this means: In order for an inverter to put out the rated amount of power, it will need to have a power input that exceeds the output. For example, an inverter with a rated output power of 5,000 W and a peak efficiency of 95% requires an input power of 5,263 W to operate at full power.

Does an inverter convert a battery into a 120 volt battery?

Our batteries come in different voltages (12,24, & 48v) But AC appliances required 120 volts (because our grid power comes in 120 volts). So an inverter will convert the lower voltage of the battery into 120 volts in order to run AC appliances If playback doesn't begin shortly, try restarting your device.

How do you calculate inverter voltage?

Understanding and calculating inverter voltage is crucial for ensuring the correct operation and efficiency of various electronic devices and systems. Inverter voltage, V (V) in volts equals the product of DC voltage, V_{DC} (V) in volts and modulation index, dm . Inverter voltage, V (V) = V_{DC} (V) * dm V (V) = inverter voltage in volts, V .

How many watts is a 120 volt inverter?

pass-thru current must be no greater than 30 amps per leg or damage to the relays may occur. 1 amp at 120 volts is 10 amps at 12 volts. Same the other way around. Both = 120 watts. An inverter will need 160 amps at 12 volts to



create 16 amps at 120 volts. Plus some loss in conversion. Volts times amps = watts.

How much power does a 12V inverter use?

For example: If you're running a 1500W inverter on your 12v battery with 1000 watts of total AC load. So your inverter will be consuming 83 amps (amps = watts/battery volts) from the battery for which you'll need a very thick cable. using a thin cable in this scenario can damage the inverter or you'll not be able to run your load.



How many volts can the inverter output



Inverter Calculator

In order to ensure that the capacity of your power inverter is sufficient to meet the required start up load, you must first determine the power consumption of the equipment or appliance you plan ...

Understanding inverter voltage

A 12V to 240V inverter is a pivotal device designed to convert direct current (DC) power from a 12-volt battery into alternating current (AC) power with a nominal output of 240 volts.



[How Does Input Voltage Affect a Grid-Tie Inverter?](#)

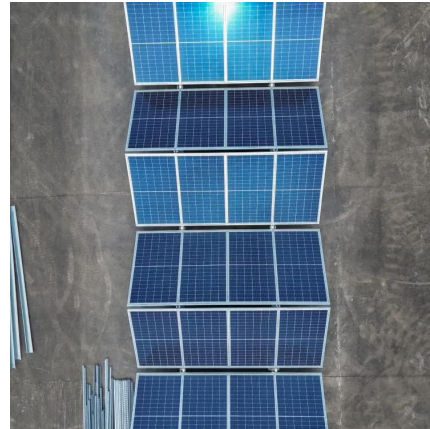
In the photovoltaic grid-tie inverter, there are many input voltage technical parameters: Maximum DC input voltage, MPPT operating voltage range, full-load voltage ...

What Will An Inverter Run & For How Long? (With Calculator)

Our batteries come in different voltages (12,24, & 48v) But AC appliances required 120 volts



(because our grid power comes in 120 volts). So an inverter will convert the lower ...

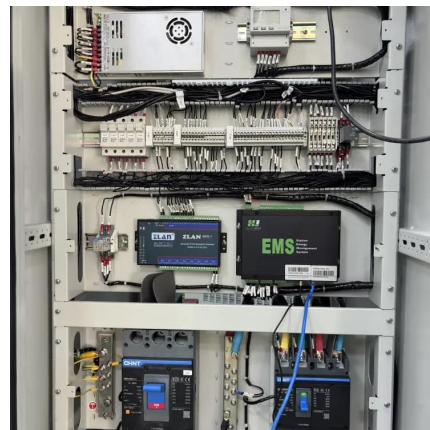


How many amps can an inverter put out?

If your thinking that the inverter output should be supplementing your 30 amp shore power service, they don't work that way. BUT, they do make a Hybrid inveter that can do that.

Inverter Voltage Calculator, Formula, Inverter Voltage Calculation

The output voltage of an inverter is determined by the DC input voltage and the modulation index. The modulation index represents the ratio of the inverter's AC output voltage to its maximum ...



How many amps can an inverter put out?

1 amp at 120 volts is 10 amps at 12 volts. Same the other way around. Both = 120 watts. An inverter will need 160 amps at 12 volts to create 16 amps at 120 volts. Plus some ...



How Many Solar Panels Can I Connect to an Inverter?

Minimum Input Voltage: This is the lowest voltage required for the inverter to work efficiently. **Power Rating:** It tells you the maximum power output that the ...



How Many Amps Does a 100, 300, 500, 600, 750, 1000, 1500, ...

Usually, the voltage of a 300-watt inverter is within the range of 12 volts to 14 volts. If you do not know what the voltage of your inverter is, assume that it is 12.

How many amps does a 2000 watt inverter draw

A 2000-watt inverter is capable of delivering 2000 watts of continuous power, but the actual amount of current it draws depends on the voltage of the battery it is connected to ...



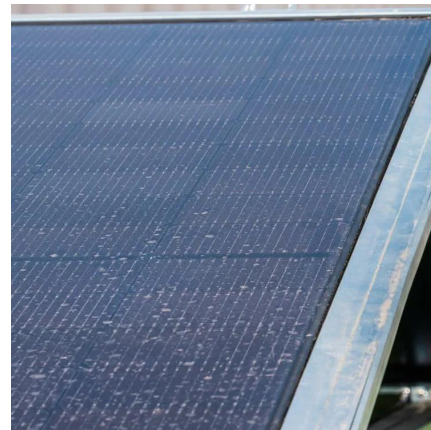
Inverter Specifications and Data Sheet

Inverters can be classed according to their power output. The following information is not set in stone, but it gives you an idea of the classifications ...



[How To Read And Interpret An Inverter Specification](#)

Output Voltage states the AC voltage produced by the inverter, usually 120V or 230V, depending on the applicable regional standards. It is important to match ...



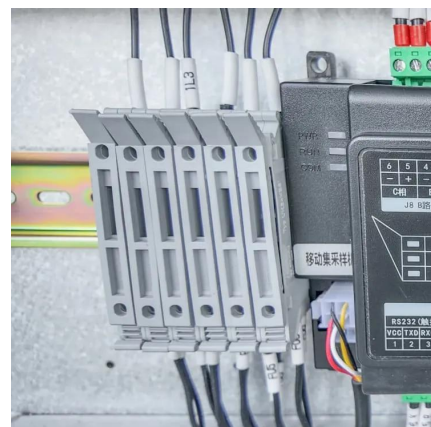
[How To Read And Interpret An Inverter Specification](#)

Output Voltage states the AC voltage produced by the inverter, usually 120V or 230V, depending on the applicable regional standards. It is important to match it with the appliances that will be ...



[What Will An Inverter Run & For How Long? \(With ...](#)

Our batteries come in different voltages (12,24, & 48v) But AC appliances required 120 volts (because our grid power comes in 120 volts). So ...





[How Many Amps Does a 2000 Watt Inverter Draw](#)

Here, the lowest battery voltage (before cut off) is 10 volts for 12V, 20 volts for 24V, and 40 volts for 48V battery bank. You can use the following ...

[A comprehensive guide to inverter voltage](#)

Output voltage compatibility: Select an inverter that provides the output voltage required for your equipment. For residential applications, this is ...



[300 watt Solar Panel: Output \(Amps, volts\), & What ...](#)

300-watt Solar Panel How Many Amps and volts? 12v 300 watt solar panel will produce about 16.2 amps and 18.5 volts under ideal conditions ...

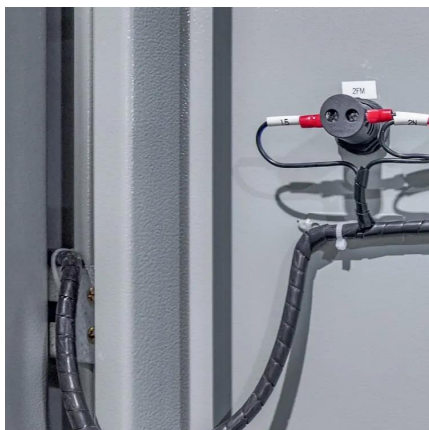
[How To Read And Interpret An Inverter Specification](#)

Output Voltage Output Voltage states the AC voltage produced by the inverter, usually 120V or 230V, depending on the applicable regional standards. It is ...



[How Many Amps Does a 1000 Watt Inverter Draw](#)

When it comes to understanding how many amps a 1000 watt inverter draws, the answer lies in the formula: $\text{Amps} = \text{Watts} \div \text{Volts}$. Generally, for a 12-volt system, a 1000 watt ...



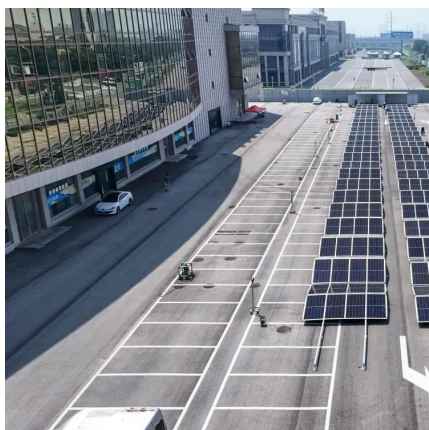
[How Many Amps Does a 100, 300, 500, 600, 750, ...](#)

If your inverter has a power of 750 watts, then you will need to see whether the voltage of your inverter is 12 volts, 14 volts, 24 volts, or 28 volts. ...



[Calculate Battery Size For Any Size Inverter \(Using ...](#)

Instructions! Inverter runtime: is the total number of hours you would need to run your load on an inverter Inverter input Volts (V): Are you ...





[How Many Amps Does a 2000 Watt Inverter Draw?](#)

The amp draw for a 2,000-watt inverter depends on factors such as the battery bank's voltage rating and the unit's conversion efficiency. But a ...



[Inverter Specifications and Data Sheet](#)

Inverters can be classed according to their power output. The following information is not set in stone, but it gives you an idea of the classifications and general power ranges associated with ...

[Understanding Solar Panel Voltage for Better Output](#)

Find out how solar panel voltage affects efficiency and power output in our comprehensive guide. Get expert insights and tips for optimal ...



[Inverters 101: Understanding amps and volts](#)

By stepping up the voltage from the power generating plants to 250,000 volts or more, the power company can use much small diameter copper wire to carry the same ...



Power Inverter Calculation / Conversion

Hi All, I have been confused about power inverters for a while now and can't seem to find a good answer anywhere that's not advertising to buy some particular power inverter. I ...



How Many Amps Does a 100, 300, 500, 600, 750, ...

Usually, the voltage of a 300-watt inverter is within the range of 12 volts to 14 volts. If you do not know what the voltage of your inverter is, ...

A comprehensive guide to inverter voltage

Output voltage compatibility: Select an inverter that provides the output voltage required for your equipment. For residential applications, this is typically 120V AC (for North ...





Inverter Calculator

In order to ensure that the capacity of your power inverter is sufficient to meet the required start up load, you must first determine the power consumption of the ...

Contact Us

For catalog requests, pricing, or partnerships, please visit:
<https://bringmethehorizon.eu>