



SolarMax Pro Energy Storage Systems

How many lead-acid batteries does a base station need





Overview

Best practice is to have individual batteries for each load/application. *Lead-Acid has a minimum sizing duration of 1min. Why?

?

?

The lower limit should allow for maximum usage during discharge. □ The narrower the voltage window, the larger the battery capacity has to be. What is a sealed lead acid battery?

Sealed Lead Acid batteries are a type of battery that requires no maintenance and gives off less gas compared to Flooded Lead Acid batteries. However, they are more expensive and have a shorter lifespan of only 3-5 years.

How long do sealed lead acid batteries last?

Sealed Lead Acid batteries only last 3-5 years. They are a little more expensive than Flooded Lead Acid batteries, but require no maintenance, and give off less gas. This type of battery also gives off hydrogen gas, meaning that if kept indoors, they will need to be vented outside.

What types of batteries are used in substations?

In this article, we'll explore the types of batteries used in substations, their functions, the benefits they offer to modern power systems, and their applications in field devices like reclosers. Flooded Lead-Acid Batteries: These are the traditional type of lead-acid batteries, known for their reliability and durability.

What is a substation battery?

Substation batteries are integral to various functions within the power infrastructure: Backup Power Supply: During power outages, batteries provide the necessary power to control systems, ensuring that critical operations



continue without interruption.

What is chapter 52 battery capacity?

Chapter 52 applies to stationary storage battery systems having an electrolyte capacity of more than 100 gal in sprinklered buildings or 50 gal in nonsprinklered buildings for flooded lead-acid, Ni-Cd, and VRLA batteries or 1,000 lbs for Li-ion and lithium-metal-polymer batteries used for facility standby power, emergency power, or UPS.

Which type of battery is most conventional?

Flooded Lead Acid batteries are a more conventional type of battery. There are three main types of batteries that are currently used: Flooded Lead Acid, Sealed Lead Acid, and Lithium.



How many lead-acid batteries does a base station need

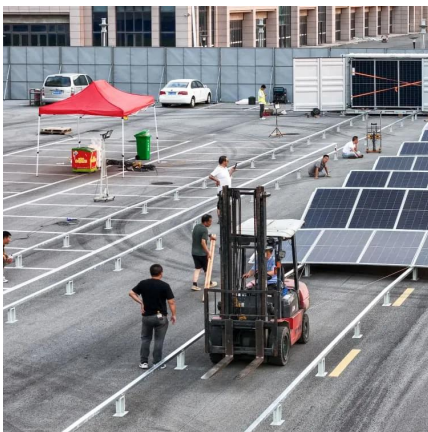


How many batteries are required for energy storage ...

Energy storage power stations generally require multiple batteries to function optimally, typically encompassing between 10 to 100 battery units, ...

What Are the Key Considerations for Telecom Batteries in Base Stations?

Telecom batteries for base stations are backup power systems that ensure uninterrupted connectivity during grid outages. Typically using valve-regulated lead-acid ...



Battery Sizing Considerations IEEE 2020

Best practice is to have individual batteries for each load/application. *Lead-Acid has a minimum sizing duration of 1min. Why??? The lower limit should allow for maximum usage during ...

Rule 26-506 Ventilation requirements for vented lead acid ...

Background: Questions have been raised about ventilation requirements for lead acid batteries.



There are two types of lead acid batteries: vented (known as "flooded" or "wet cells") and valve ...



[Watering Forklift Batteries: The Complete Guide for ...](#)

This guide will help managers understand the importance of regular forklift battery watering and ensure that their facilities are properly ...

Lead-Acid vs. Lithium-Ion Batteries for Telecom Base ...

While lead-acid batteries remain a cost-effective option, lithium-ion batteries are gaining popularity due to their longer lifespan, reduced ...



[How many batteries are needed for energy storage ...](#)

For energy storage power stations, the number of batteries required can vary significantly based on specific factors such as 1. total energy ...





How many batteries are needed for energy storage power stations?

For energy storage power stations, the number of batteries required can vary significantly based on specific factors such as 1. total energy capacity, 2. peak power demand, ...

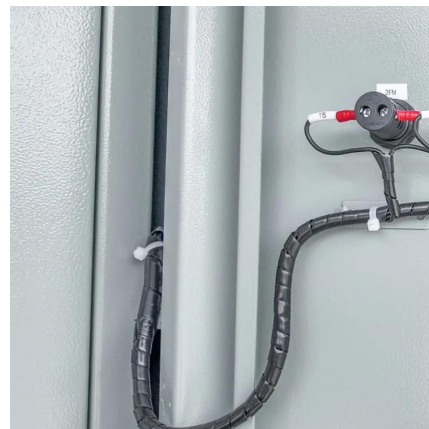


Storage battery requirements

Section 608 applies to stationary storage battery systems having an electrolyte capacity of more than 50 gal for flooded lead-acid, nickel-cadmium (Ni-Cd), and VRLA or more ...

Battery Basics

Don't overfill battery cells, especially in warmer weather because the natural fluid expansion in hot weather can push excess electrolytes from the battery. To prevent corrosion ...



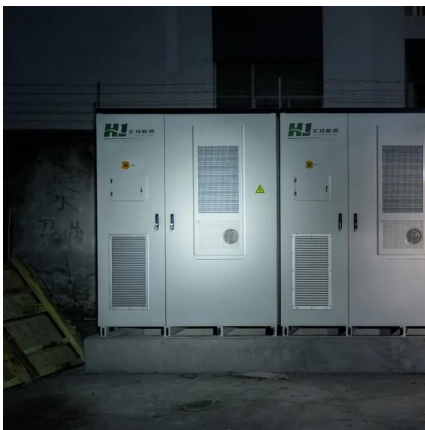
Lead-Acid Batteries Examples and Uses

Lead-acid batteries are one of the most widely used rechargeable battery types, known for their reliability, affordability, and high energy output. They power everything from ...



Maintaining Compliance in the VRLA Battery Room

Introduction Battery room compliance can be interpreted differently depending on your battery type, amount of cells or multi-cell units in a common area, volume of electrolyte and voltage ...



How many batteries are required for energy storage power stations

Energy storage power stations generally require multiple batteries to function optimally, typically encompassing between 10 to 100 battery units, depending on the station's ...

Understanding Batteries in Substations

Learn about the critical role of batteries in substations and field devices like reclosers. Explore the different types of batteries used, their functions, and the benefits they ...





Power supply for base station.

Lead Acid batteries, gell, glass matt, marine etc. all suffer from the same short comings. First they don't like sitting for extended time periods in a partial state of charge.

[Understanding Batteries in Substations](#)

Learn about the critical role of batteries in substations and field devices like reclosers. Explore the different types of batteries used, their ...



46 CFR Part 111 Subpart 111.15 -

(b) Batteries that generate less hydrogen under normal charging and discharging conditions than an equivalent category of lead-acid batteries (e.g., sealed batteries) may have their battery ...

[Portable Power Primer: A beginner's guide to ...](#)

When I first became a licensed ham radio operator in the late 1990s, sealed lead acid batteries were the primary battery power source used ...



Charging Sealed Lead Acid (SLA) batteries is not very ...

Sealed lead acid batteries are widely used, but charging them can be a complex process as Tony Morgan explains: Charging Sealed Lead Acid (SLA) batteries does not seem a particularly ...



Lead-Acid vs. Lithium-Ion Batteries for Telecom Base Stations

While lead-acid batteries remain a cost-effective option, lithium-ion batteries are gaining popularity due to their longer lifespan, reduced maintenance, and higher efficiency.



Grid-Scale Battery Storage: Frequently Asked Questions

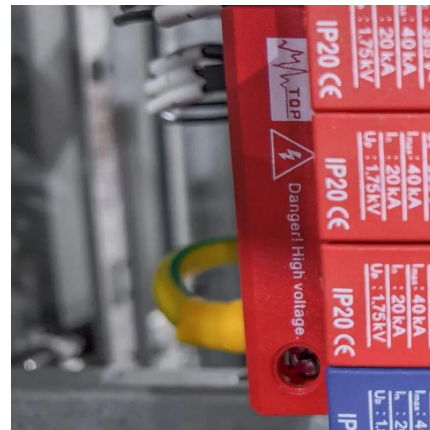
Is grid-scale battery storage needed for renewable energy integration? Battery storage is one of several technology options that can enhance power system flexibility and enable high levels of ...





Lead-Acid Batteries: Key Advantages and Disadvantages You Need ...

Lead-acid batteries are highly recyclable, with over 95% of the materials, including lead and sulfuric acid, being reusable. This makes them an environmentally friendly option in ...



[Ham Radio Battery Upgrade: Why LiFePO4 is the ...](#)

Tired of heavy lead-acid batteries for your ham radio? See how operators are revolutionizing their portable and base station setups with LiFePO4 batteries.

A Guide to Battery Banks

There are three main types of batteries that are currently used: Flooded Lead Acid, Sealed Lead Acid, and Lithium. There are several other types of batteries that are being developed today, ...



Can telecom lithium batteries be used in 5G telecom base stations?

Traditional lead - acid batteries have long been used as backup power sources in telecom base stations. They are relatively inexpensive and have a well - established track record.



Choosing the Right Battery for Base Stations: LiFePO4 vs. Lead-Acid ...

Explore the critical considerations in selecting batteries for base stations. This comparison between LiFePO4 and lead-acid batteries delves into power consumption, backup time, and ...



[Ultimate Guide to Battery Voltage Chart, EcoFlow US](#)

Need an accurate battery voltage chart? Explore different battery chemistry types like lead acid, Li-ion, and LiFePO4 & how they impact lifespan & performance.

Contact Us

For catalog requests, pricing, or partnerships, please visit:
<https://bringmethehorizon.eu>