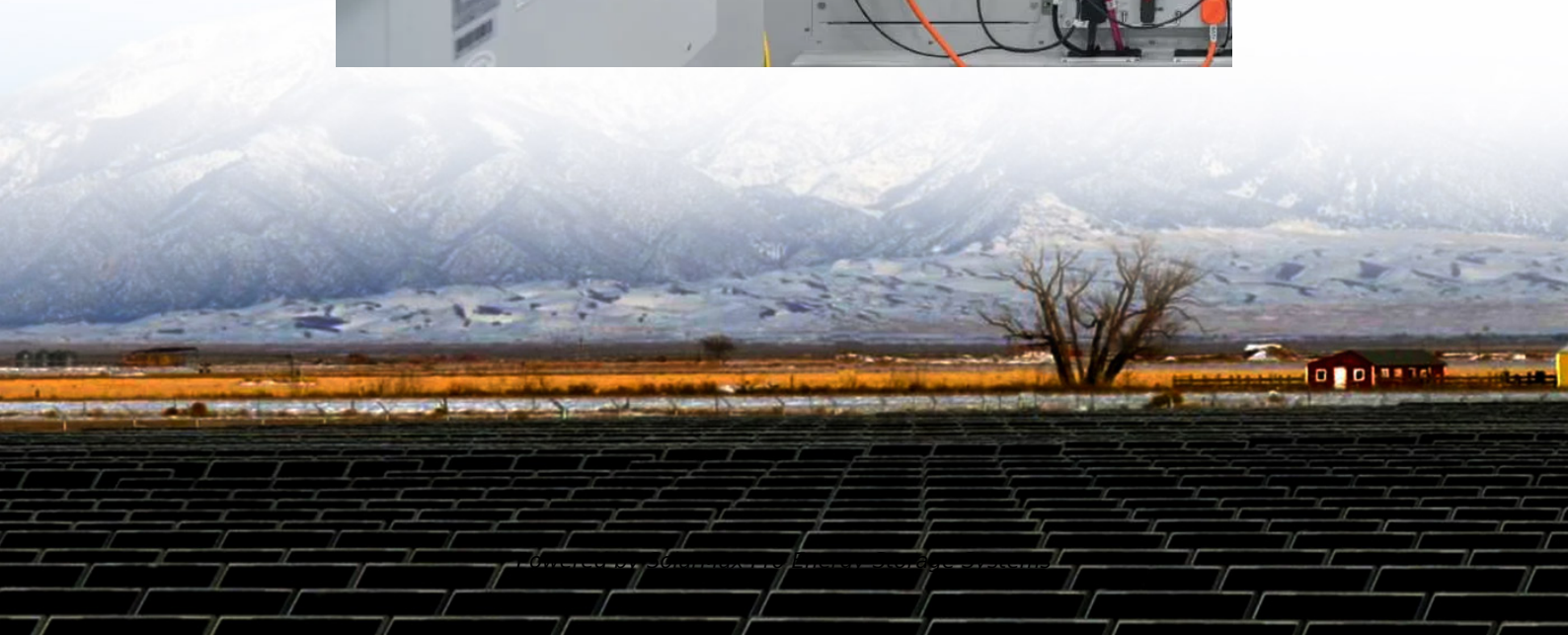




**SolarMax Pro Energy Storage Systems**

## **How many hours can the sine wave inverter last**





## Overview

---

So I'm gonna explain to you guys in simple words about what you can run on your any size inverter and what are the key point to keep in mind. And also how long your inverter will last with the battery with the help of examples, charts, and a calculator.

Our batteries store power in DC (Current current) but most of our household appliances require AC (Alternating current) Our batteries come in different voltages (12,24, & 48v) But AC appliances required 120 volts (because our grid power comes in 120 volts). So an.

There are a few points to keep in mind before getting into calculation stuff, Which are the basics and you need to know.

The next question which comes to mind that how long my inverter will last on load with a 12, 24, or 48v battery. To understand this first of all we need to know 1. What size battery is connected 2. Its type 3. total output load in watts

A rule of thumb is that the total output load should be less than the inverter capacity. For example,if you have a 3000-watt inverter you can run up to 2500 watts of output load with it. As I have mentioned earlier you have to keep in mind the efficiency rate of your.

Whether you're using a modified sine wave inverter for tools or a pure sine wave inverter for sensitive devices like TVs and computers, the runtime will largely depend on: This means your inverter can power a 200-watt appliance for approximately 5.4 hours before the battery needs recharging.How long does a 24V inverter last?

An inverter draws its power from the battery so the battery capacity and power load determines how long the inverter will last. Regardless of the size, the calculation steps are always the same. Using this calculation, a 24V inverter with a 100ah battery and 93% efficiency can run a 500W load for 2.3 hours.

Does an inverter use time?



Inverter Usage Time Calculator - Yes! Calculator Understanding how long your inverter will last is essential for efficient energy management and backup power planning. This guide explores the science behind inverter usage time, providing practical formulas and expert tips to help you maximize your system's performance.

How long can an inverter supply power?

The duration it can supply power depends on three key factors: Battery Capacity (Ah): The amount of energy stored in the battery. Inverter Efficiency (%): How effectively the inverter converts DC to AC power. Load Power (W): The total wattage consumed by connected devices. This knowledge is crucial for:.

How long can a 24V inverter run a 500W load?

Using this calculation, a 24V inverter with a 100ah battery and 93% efficiency can run a 500W load for 2.3 hours. You have a 24V inverter with a 150ah deep cycle battery. The inverter is 93% efficient. You want to run a 700 watt load, so how long can the inverter run this?

The inverter can run a 700 watt load for 2.4 hours.

How long can a refrigerator inverter run out of power?

Practical Impact: The inverter can support your home for nearly 3 hours during a power outage. Scenario: Running a 150 W refrigerator with a 100 Ah battery and 80% efficient inverter. Practical Impact: You'll need multiple cycles or additional solar panels to sustain longer operation. Q1: What happens if my inverter runs out of power?

.

How do you calculate inverter runtime?

Divide the inverter watts by battery voltage to get the amps, then divide the amps by the inverter efficiency rating. Divide the result by the amps and you get the inverter runtime. An inverter draws its power from the battery so the battery capacity and power load determines how long the inverter will last.



## How many hours can the sine wave inverter last

---



### [How Long Inverter Last: A Complete Guide](#)

Whether you're using a modified sine wave inverter for tools or a pure sine wave inverter for sensitive devices like TVs and computers, the runtime will largely depend on: This means your ...

### [How many batteries are needed for a 3000 watt inverter?](#)

The number of batteries required for a 3000 watt inverter depends on the ampere per hour (AH) and rated voltage (V) of the battery you ...



### **How Long Will My Inverter System Last in a Day? Here's What ...**

One of the most frequently asked questions we get from both homeowners and business owners alike is: "How many hours will my inverter system last in a day?" And while ...

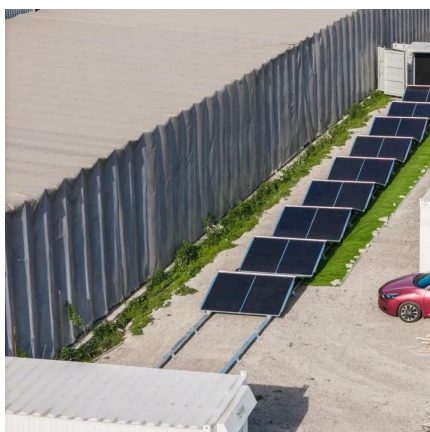
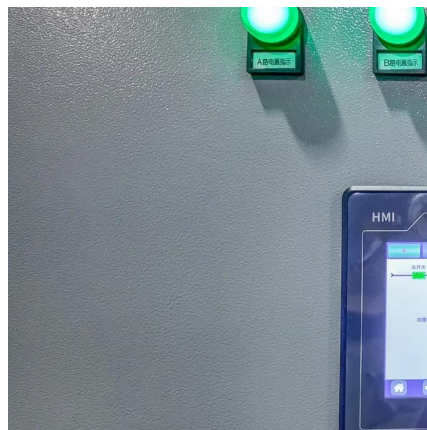
### **What Can a 6000W Pure Sine Wave Inverter Run? , inverter**

Conclusion A 6000W dc to ac pure sine wave inverter is a powerful and versatile device





capable of running a wide range of appliances, tools, and electronic equipment. ...



## What Can a 600W Inverter Run? The Ultimate Guide to 600 Watt ...

Discover what a 600w inverter can run, from laptops to small appliances. Learn usage tips, battery needs, and best practices for off-grid or backup power.

## [Running LED TV on Inverter: What Power Inverter Do ...](#)

Yes, it is safe to use an inverter with an LED TV. Either the modified or the pure sine wave inverter will work but you may have a little trouble when ...



## [1500 Watt Inverter: Everything You Need to Know](#)

Looking for a reliable 1500 watt inverter? Learn what it powers, how many batteries you need, installation tips, and expert FAQs to make the most of your 1500W inverter!





### [Inverter for a High End Gaming PC : r/IndianGaming](#)

Some people say any Sine Wave inverter will work for gaming PCs. But then some say the PSU has to be good quality for Sine Wave Inverters to give uninterrupted power supply. Like some ...



### [How Long Does A Pure Sine Wave Inverter Last?](#)

Learn how long a pure sine wave inverter lasts and how to maximize its lifespan. Discover the factors affecting inverter durability, including usage, maintenance, and ...

### [What Is The Lifespan Of A Pure Sine Wave Inverter?](#)

Considering the lifespan of pure sine wave inverters. The lifespan of a pure sine wave inverter is influenced by various factors and can range from approximately 5 to 15 years, ...



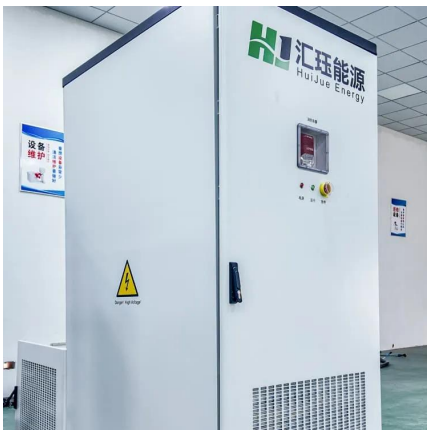
### **Can an inverter be used to run a Desktop PC during extended hours ...**

Checked on the net but couldn't quite understand much. During extended hours of power cut (eg. 2-3 hours), can an inverter be used to run a desktop PC? Does anyone have ...



## Inverter Usage Time Calculator

Understanding how long your inverter will last is essential for efficient energy management and backup power planning. This guide explores the science behind inverter ...



## [What Is The Lifespan Of A Pure Sine Wave Inverter?](#)

Considering the lifespan of pure sine wave inverters. The lifespan of a pure sine wave inverter is influenced by various factors and can range ...

## [Will an Inverter Run a Portable Air Conditioner?](#)

A word here about pure sine and modified sine wave inverters. There are some good modified sine wave inverters, but for an AC, pure sine is more suitable. If you have a 5000 BTU AC, the ...



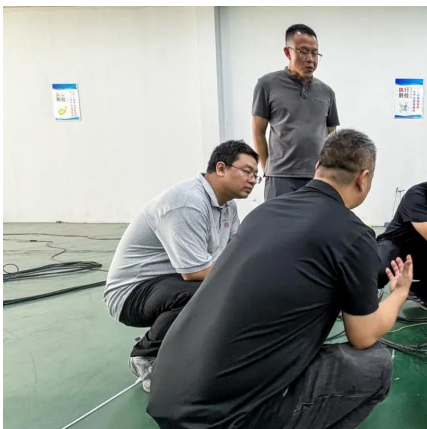


### [Powering your electric blanket from an inverter](#)

Last winter I answered a few of my reader's questions about powering an electric blanket from your RV battery and inverter. At the time this was about warning you not to plug ...

### [Do You Really Need a Pure Sine Wave Inverter?](#)

But a pure sine wave inverter can last more than 7 hours at the same settings. Over a year, the inefficient inverter costs an additional \$180 in battery replacements (based on 3 ...



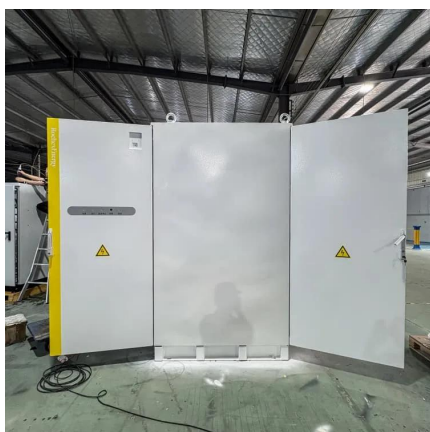
### [How Many Batteries For a 3000 Watt Inverter?](#)

How Long Will Batteries Last on a 3000 Watt Inverter? In the examples above the assumption is the inverter runs with a full load for one hour. For other scenarios you can use the following ...

### [How Many Amps Does a 2000W Inverter Draw?](#)

If the inverter is running a 1300W load and pulls 108.3 amps per hour, that would be 54.1 amps per half hour. This calculation focused on 2000W inverters, but ...



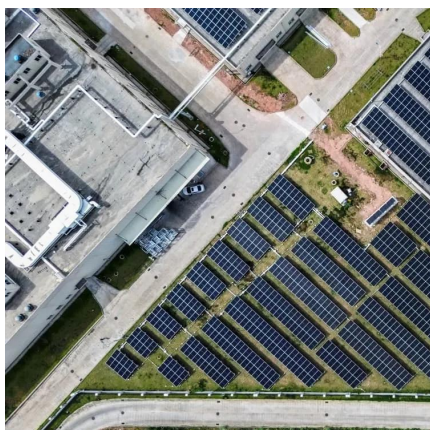
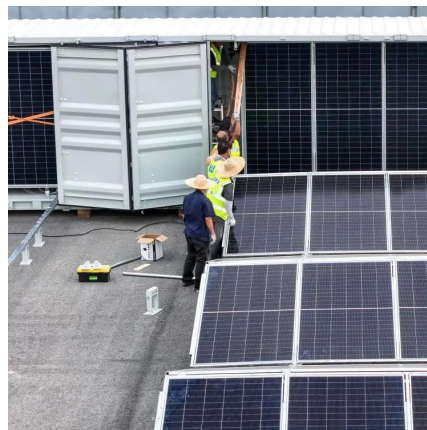


## What Will An Inverter Run & For How Long? (With Calculator)

So I'm gonna explain to you guys in simple words about what you can run on your any size inverter and what are the key point to keep in mind. And also how long your inverter ...

## [How Many Batteries Do I Need For a 1000 Watt Inverter?](#)

A 400ah deep cycle battery will last 4 hours with a 1000 watt inverter before it is fully discharged. If the battery is discharged at 50% the inverter will stop running after 2 hours.



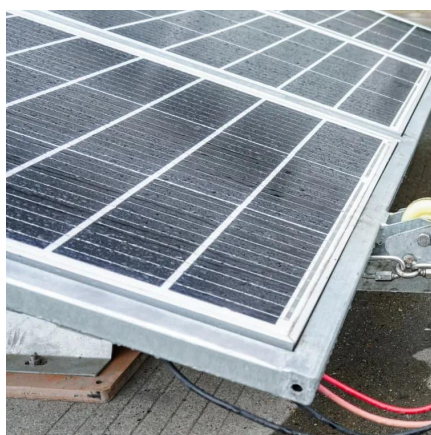
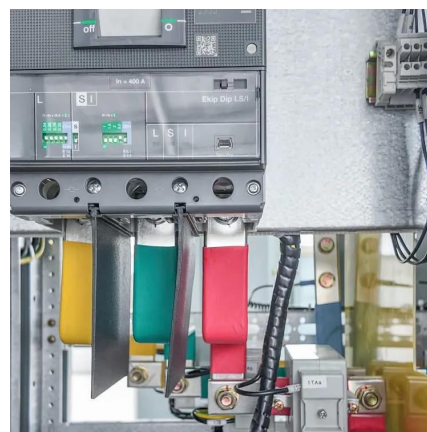
## [Running off 12V Battery with Inverter](#)

Ordered the RV Kit yesterday and I plan to use it as intended in a small Popup Camper. Since we'll be off-grid, we'll be powering it with the 12V battery and an inverter. It's the only thing we'll ...



## How Long Inverter Last: Everything You Need to Know

This depends on several factors, including battery capacity, power consumption, and inverter efficiency. In this guide, we'll explore the key elements that determine inverter ...

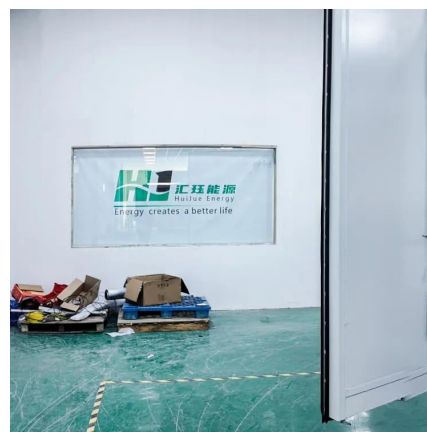


## Do You Really Need a Pure Sine Wave Inverter?

But a pure sine wave inverter can last more than 7 hours at the same settings. Over a year, the inefficient inverter costs an additional \$180 in ...

## **How long is the life of a pure sine wave inverter? How to maintain it?**

Most high-quality pure sine wave inverters have a design life of about 5 to 10 years, depending on the following factors: 1. Quality of internal components. High-quality inverters have a longer ...



## **Contact Us**

For catalog requests, pricing, or partnerships, please visit:  
<https://bringmethehorizon.eu>